

An aerial photograph of a river valley. A river flows from the top right towards the bottom left. A dashed black line follows the course of the river and its immediate banks, defining a specific area for restoration. The surrounding landscape is a mix of green fields, some bare brown patches, and scattered buildings.

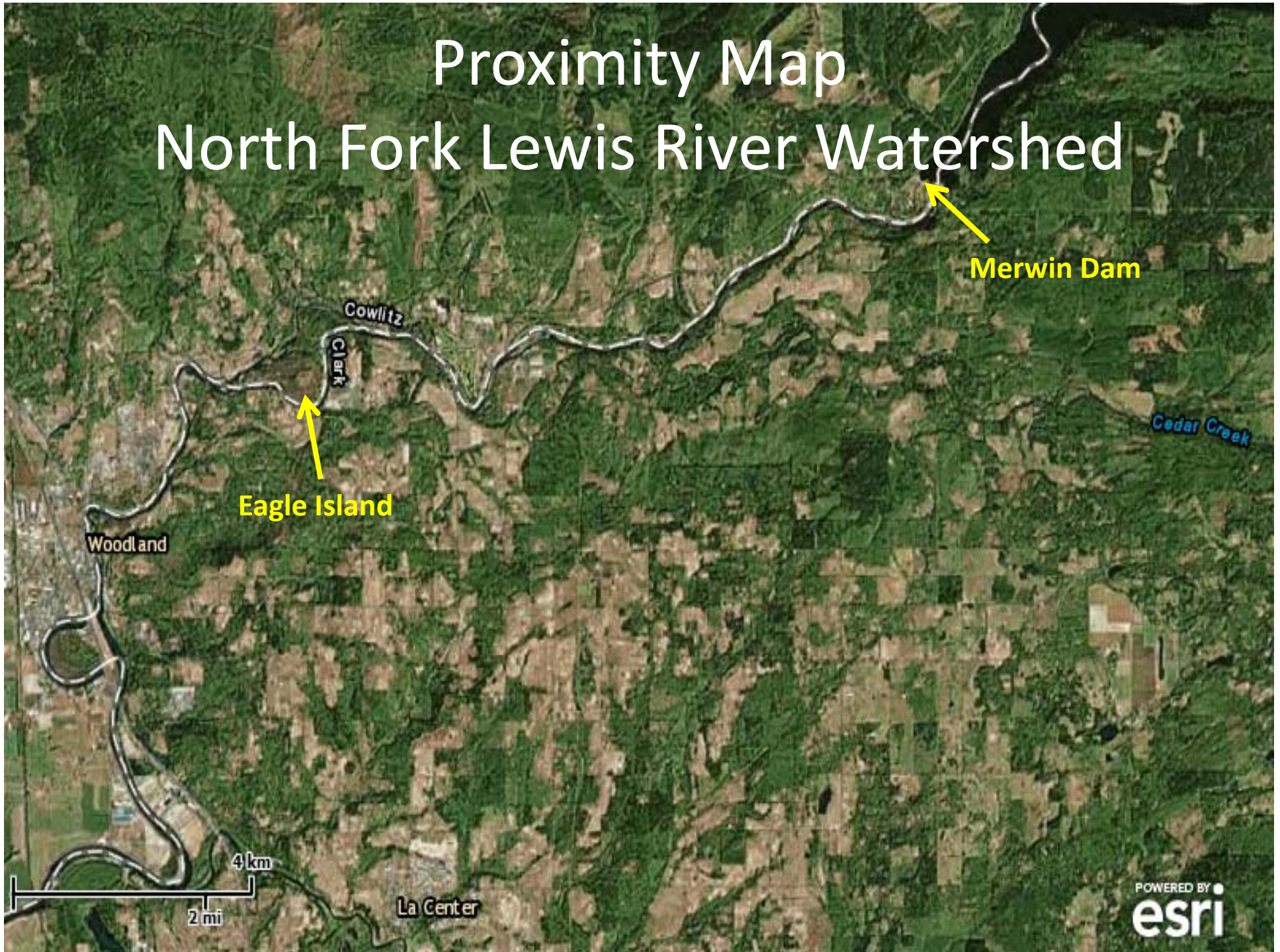
# Eagle Island Upland Restoration

**PacifiCorps TCC Meeting**

**2/10/16**



# Proximity Map North Fork Lewis River Watershed





# Scotch broom infestation area

- Scotch broom infestation covers about 120 acres of Eagle Island
- Eagle Island is about 270 acres total





# Restoration Approach Timeline and Cost

- Control scotch broom through aerial herbicide application.
- Mow scotch broom
- Over-seeding the area with a pasture mix may occur after mowing
- Retreat area with an herbicide application if needed
- Plant area with native tree and shrub species
- Monitor area for weeds and success of plantings



# Phase 1 Aerial Herbicide Application

- Year 1- Herbicide application
- Cost- \$100 per acre. Includes flight time and herbicides
- Scheduled for June 2016



# Aerial Treatment on the Mudflow Unit

- Photo taken two weeks after application-  
10/14/14





# Results of Aerial Treatment

- Photo taken 8 months after application-  
6/17/15





# Phase 2 Clearing

- Year 1 or 2- Mowing of scotch broom
- Cost- \$300 per hour
- About 1 acre per hour





# Clearing of scotch broom

A landscape photograph showing a field of tall, dry grasses in the foreground, with a line of trees and hills in the background under a cloudy sky. The text 'Clearing of scotch broom' is overlaid at the top.

- Area was mowed approximately 1 year after treatment, using a tractor and brush mower



# Phase 3

## If Needed- Additional Aerial Treatment



- Year 3 or 4- Aerial spraying of site to treat any new infestations of scotch broom
- Cost- \$100 per acre



# Phase 4 Plantings

- Year 4 or 5- Begin planting of native trees and shrubs
- Drought tolerant trees and shrubs would be planted
- 400 trees/shrubs per acre
- Cost: \$1 per tree, \$40-50,000 to plant entire site. Includes cost of planting crew



# Phase 5 Monitoring

- Site will need to be monitored for weed infestations, and treated as necessary.
- Plantings will be monitored for survival and additional plantings will occur as needed.
- Cost: \$2-3,000 Annually



# Total Cost

- Phase 1 - \$10,000 one-time
- Phase 2- \$30-40,000 one-time
- Phase 3- \$10,000 one-time
- Phase 4- \$40-50,000 one-time
- Total initial restoration cost: \$80-110,000
- Phase 5- \$2-3,000 annually



# Benefits of Restoration

- Reduction of non-native invasive weed species will allow native plants to increase
- Resulting in improved wildlife habitat for deer, elk, game birds, small mammals, birds of prey, and numerous songbird species.



# WDFW Funding

- WDFW will allocate \$16,500 for the restoration efforts over the next two years- \$10,500 for the aerial spraying and \$6,000 for the clearing of the scotch broom.
- WDFW will also continue to pursue additional funding sources over the lifetime of the project.



## 10.3.3 Funding Request

- WDFW would like to request \$16,500 in PacifiCorps 10.3.3 funds for the scotch broom clearing phase of the restoration efforts on Eagle Island.
- Funds are to be used by August 31, 2017.



# Questions/Comments

