

**Lewis River Hydroelectric Projects Settlement Agreement
Terrestrial Coordination Committee (TCC)
Meeting Agenda**

Date & Time: Wednesday, March 12, 2014
 9:00 a.m. – 12:15 p.m.

Place: **Merwin Hydro Control Center
105 Merwin Village Court
Ariel, WA 98603**

Contacts: **Kirk Naylor: (503) 813-6619; cell (503) 866-8750**

Time	Discussion Item
9:00 a.m.	Welcome <ul style="list-style-type: none"> ➤ Review Agenda & 2/12/14 Meeting Notes ➤ Comment & accept Agenda & 2/12/14 Meeting Notes
9:15 a.m.	Review PacifiCorp 2014 WHMP Plan
10:15 a.m.	WHMP 2013 Annual Report Q&A of 30-day review draft
10:45 a.m.	Break
11:00 a.m.	Cherie Kearney, Columbia Land Trust
12:00p.m.	<ul style="list-style-type: none"> ➤ Next Meeting's Agenda ➤ Public Comment Opportunity Note: all meeting notes and the meeting schedule can be located at: http://www.pacificorp.com/es/hydro/hl/lr.html#
12:15 p.m.	Adjourn

Join by Phone
 +1 (503) 813-5252 [Portland, Ore.]
 +1 (855) 499-5252 [Toll Free]

Conference ID: 25166794

FINAL Meeting Notes
Lewis River License Implementation
Terrestrial Coordination Committee (TCC) Meeting
March 12, 2014
Ariel, WA

TCC Participants Present: (9)

Ray Croswell, RMEF
 Bill Richardson, RMEF
 Peggy Miller, WDFW
 Kimberly McCune, PacifiCorp Energy
 Kendel Emmerson, PacifiCorp Energy
 Kirk Naylor, PacifiCorp Energy
 Nathan Reynolds, Cowlitz Indian Tribe
 Diana Gritten-MacDonald, Cowlitz PUD (via conference)
 Cherie Kearney, Columbia Land Trust (guest)

Calendar:

April 9, 2014	TCC Meeting	Conference Call
May 14, 2014	TCC Meeting	HCC

Assignments from March 12, 2014	Status
Reynolds: Contact Gritten-MacDonald and provide the specific adaptive management text for timber management to be included in the 2014 WHMP Plan by close of business March 13, 2014.	Gritten-MacDonald did not receive text from Reynolds so she entered her language and submitted to the FERC on 3/31/14.
Emmerson: Provide TCC additional data on the number of Osprey nests destroyed and unrepaired as reported in the 2013 WHMP Annual Report.	In Progress

Assignments from June 13, 2012	Status
Naylor: Review the SA/WHMP budget(s) as well as determine status and opportunity for coordination with John Cook (NCASI) and Lisa Shipley (Washington State University) doing the black-tail study and report back to the TCC.	In Progress

Review of Agenda and Finalize Meeting Notes

Kirk Naylor (PacifiCorp Energy) called the meeting to order at 9:10 a.m. Naylor reviewed the agenda and asked the TCC if there were any changes/additions. Nathan Reynolds (Cowlitz Indian Tribe) requested an update of the Yale Rock-fall project.

Naylor reviewed the February 12, 2014 meeting notes and assignments. The meeting notes were approved at 9:20 am without change.

PacifiCorp: Yale Dam Rock Fall Project

Naylor informed the TCC attendees that the Yale Rock Fall project permitting and planning is still in progress; currently reviewing vegetation clearing needs and rock disposal areas. The road decommission/access issues have been resolved. The rock removed will be hauled to the Cougar area rock pit (PacifiCorp property) if permitting is approved. Vegetation will be cut in April and the relocation of the Larch Mountain Salamanders will take place right before the rock demolition work which may be in May which is well within the Salamander season.

Preview Cowlitz PUD 2014 WHMP Plan

Diana Gritten-MacDonald (Cowlitz PUD) informed the TCC attendees that she has contacted a portable saw mill operator in Woodland, WA in regards to timber management alternatives but they are not insured to log. Additionally a horse logging contractor was contacted but he is no longer in business. Erik Holman (WDFW) has made contact regarding the use of inmate crews but response is pending. Unless the TCC has further comment Gritten-MacDonald will proceed with filing its 2014 WHMP Plan with the Federal Energy Regulatory Commission (FERC).

The TCC requested further clarification written into the 2014 Plan to address the “adaptive management” approach specific to the Devils Backbone – Timber Management Alternatives.

The TCC requested Gritten-MacDonald insert similar text (as written below) from the February 12, 2014 meeting notes into the Cowlitz PUD 2014 WHMP Plan:

The TCC agreed to continue with the existing 2014 plan as provided by the PUD and indicate that the TCC may defer certain projects depending on the outcome of inmate work crews or other options.

The TCC agreed to adaptive management of the Cowlitz PUD 2014 WHMP Annual Plan.

Gritten-MacDonald will file its 2014 WHMP Plan with the FERC to include these revisions. Reynolds (Cowlitz Indian Tribe) will contact Gritten-MacDonald and provide the specific adaptive management text to be included in the 2014 WHMP Plan by close of business March 13, 2014.

Review PacifiCorp 2014 WHMP Plan

Kim McCune (PacifiCorp) informed the TCC attendees that PacifiCorp’s 2014 WHMP Plan is out for its 30-day review. The document can be viewed on PacifiCorp’s website at the following link:

http://www.pacificorp.com/content/dam/pacificorp/doc/Energy_Sources/Hydro/Hydro_Licensing/Lewis_River/LR_WHMP_2014AnnualPlanFinalDraft.pdf

Comments are due on or before April, 7, 2014.

Kendel Emmerson (PacifiCorp) informed the TCC attendees of the following 2014 tasks completed thus far:

PacifiCorp's contractor has planted 66 bare root orchard trees on 3/11/14; all enclosures were built; weed block fabric applied and we received all funds from PacifiCorp's Transmission & Distribution (T&D) to fund the tree purchase and planting. Emmerson stated that she is confident about the outcome/success of the planting. The trees were purchase through Rain Tree Nursery. Tree varieties were selected for their disease resistance, high production in September & October, and fruit persistence on the ground. In addition, Contractor transported the trees in a U-Haul so the trees were enclosed to avoid damage during transport.

Naylor informed the TCC attendees that tree planting in Units 4 and 20 was completed and inter-planting trees at the lower elevation in Unit 33 was also completed; PacifiCorp hopes to plant the balance of trees next week when snow recedes further in Unit 33.

Emmerson also informed that TCC attendees that PacifiCorp had transmission tower cross arms fail on two towers during recent storms in the Beaver Bay wetland complex area. T&D notified us and expected that due to the wet conditions during the emergency repair there was going to be some disturbance to the wetlands. Emmerson stated that this area has been cat tails and blackberry for years and hasn't been treated due to poor access. The Beaver Bay trail is to be constructed this year and this will allow us access to improve the wetland vegetation conditions. So although this disturbance was unfortunate, it was good that it happen now instead after the area is restored.

Emmerson noted that in the Annual Plan, Section 11.2 – Management Actions, within transmission line right-of-way (ROW) there is considerable reference to Scotch broom. Cowlitz County has Scotch broom listed as a target species which is why the Plan addresses many areas with mostly small infestations.

Emmerson communicated that PacifiCorp has its first public access encroachment for 2014. It's located in Unit 8 – Leach Field Meadow. There is some ATV use but also apparent clearing beyond the property line from the adjacent landowner; PacifiCorp will get a letter out to the adjacent property owners as quickly as possible. However, Emmerson also noted the noxious weed control was very effective in the drain-field meadow and there is tremendous elk use of this area.

Emmerson informed the TCC attendees that the wildlife survey contract was awarded to Cafferata Consulting. They will begin the Mink work on April 15, 2014 and Bull frog around May 2014. Savannah Sparrow work to begin between May 15 and June 15, 2014.

Naylor noted that PacifiCorp recently discovered a pile of sludge in 3 spots on the ROW above the Speelyai Fish Hatchery. Apparently a hatchery contractor disposed of sludge from the bottom of the fish ponds last fall on mitigation lands. PacifiCorp has instructed the contractor that they must hand shovel the human refuse/debris and remove that that portion that was also part of what was in the bottom of the tank that was flushed. The sludge mostly consists of fish food and fish excrement which can be used as fertilizer but the sludge should be spread out and not piled if this were to be done in the future. Emmerson noted that given proper distribution there is an opportunity to enhance rather than smother the grass in the ROW.

Review WHMP 2013 Annual Report – Q&A of 30-day review draft

Kim McCune (PacifiCorp) informed the TCC attendees that PacifiCorp’s 2013 WHMP Annual Report is out for its 30-day review. The document can be viewed on PacifiCorp’s website at the following link:

[http://www.pacificorp.com/content/dam/pacificorp/doc/Energy_Sources/Hydro/Hydro_Licensing/Lewis_River/LR_WHMP_2013Annual%20Report\(draft\).pdf](http://www.pacificorp.com/content/dam/pacificorp/doc/Energy_Sources/Hydro/Hydro_Licensing/Lewis_River/LR_WHMP_2013Annual%20Report(draft).pdf)

The TCC did not have any comments at this time.

Naylor/Emmerson informed the TCC attendees that we had a great year and completed a number of projects in 2013:

- Orchard Expansion Surveys
- Old Growth Connectivity
- Riparian Mixed Stand Evaluations and created snags completed
- Wetlands mapping completed

Emmerson expressed concern about the decline in osprey numbers she is seeing on the Lewis River (see Table 19 of the WHMP 2013 Annual Report):

Table 19. Summary data for bald eagle and osprey aerial nest data

Nest Attribute	Bald Eagle		Osprey	
	2012	2013	2012	2013
Total number of nests surveyed	15	15	43	49
Total Number of Territories	10	9	Not Applicable	Not Applicable
Number of new nest detected	3	1	1	3
Number of occupied nests	6	5	14	6
Successful Reproduction	2	4	-	-
Number of nest destroyed and unrepared	3	1	10	21
Percent of Occupancy	60%	56%	33%	12%
Percent of Successful reproductions	33%	80%	Not Applicable	0%

Emmerson indicated that a few nests are in good shape but they are not occupied. She further stated that the term “destroyed” is misleading; some are actually frustration nests (males not ready to breed and they build incomplete/partial nests. Emmerson expressed that she thinks it is much more than eagle competition; survey intensity has been unchanged over the 28+ years.

Emmerson will gather additional data on the number of nests destroyed and unrepared and report back to the TCC.

Naylor reviewed Section 11.1 - Forestland Habitat Management, Inspections. He informed the TCC that PacifiCorp requested Washington Department of Natural Resources Forest Health Division to come out to assist with information and inspection of infected trees that have been observed in several stages of needle loss or mortality on WHMP lands. Trees show deformed bark (cankers), pitching in the stem of the tree and needle yellowing or needle loss, sometimes resulting in mortality (See Section 11.1, Page 18 of the WHMP 2013 Annual Plan for more detail). Pitch canker and needle cast disease was suspected but the DNR pathologist said that these conditions may have been initiated due to drought stress. Douglas-fir trees 5-15 years old appear to be the most commonly affected, but some larger trees are also showing symptoms. PacifiCorp and its foresters noted that drought stress seemed unlikely as July and August are typically low moisture periods. More research and discussions with experts is planned in 2014.

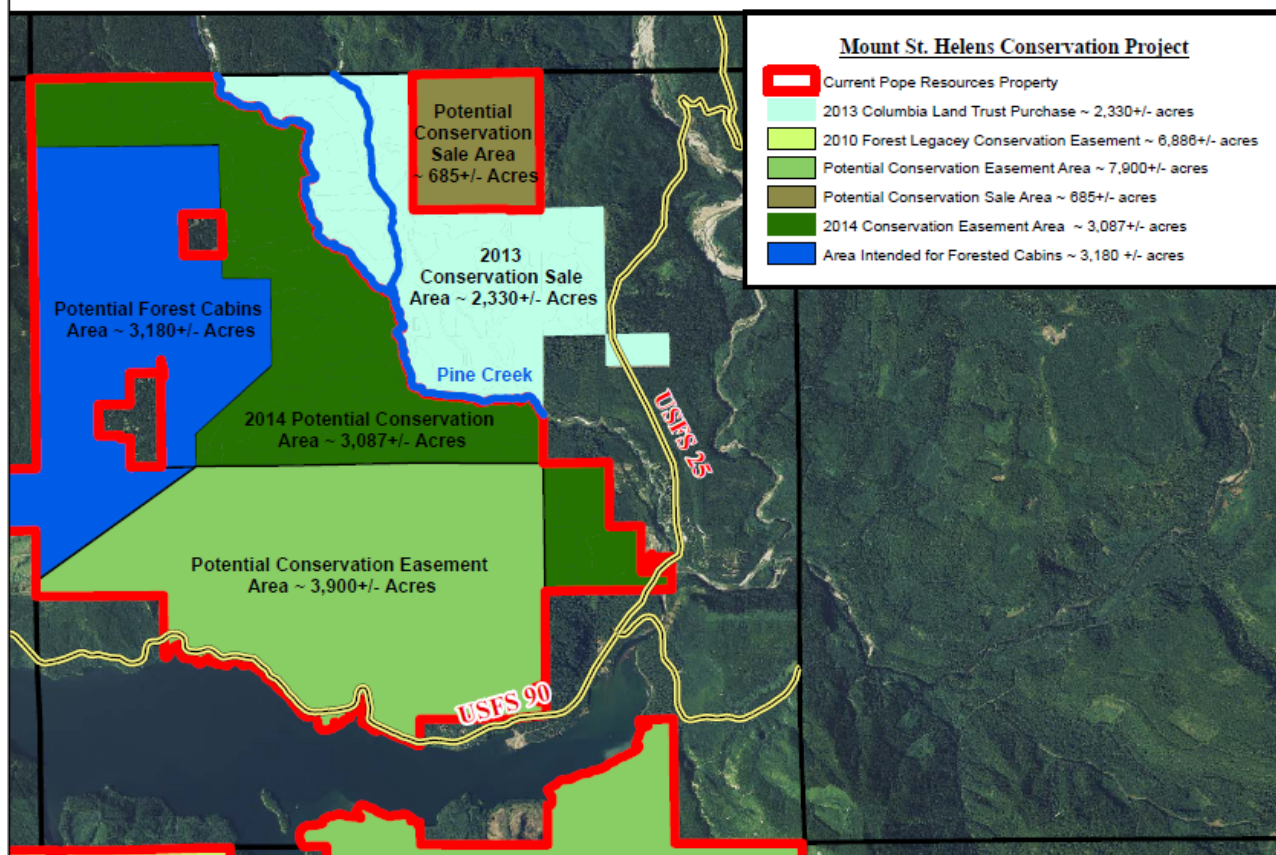
Bear damage was also noted in plantations during 2013 that has killed up to 15% of some plantations.

<Break 10:30am>

<Reconvene 11:00am>

Cherie Kearney, Columbia Land Trust (CLT)

Kearney reviewed the map below illustrating the Swift current and future conservation easement areas:



Kearney reviewed the current Pope Resources property (approximately 24,000 acres). The dark blue area (approximately 3,000 acres) has been reserved for potential development and they are

requesting rezoning into 20 acre lots. Access into the dark blue area for development other than logging has yet to be secured from PacifiCorp. Pope Resources has applied to amend the Skamania County Comprehensive Plan to allow 20 acre buildable lots.

CLT has closed in fee simple purchase on approximately 2,300 acres of Pine Creek property (see light blue) with federal endangered species funding. Kearney informed the TCC that the CLT has completed its Forest Habitat Management Plan and it is currently in review by the U.S. Fish and Wildlife Service which primarily addresses bull trout and Northern Spotted Owl listed species. CLT informed the TCC attendees that efforts are currently underway to purchase a conservation easement on Pine Creek West, the area in dark green on the map. The goal of this purchase is to extinguish development rights and ensure a 200' harvest setback requirement from Pine Creek for riparian protection. This setback doesn't extend to tributaries other than what is offered by state forest practice compliance.

The area noted in brown (approximately 685 acres) remains in Pope Resource's ownership and CLT cannot buy at this time due to a lack of funds.

Naylor expressed that PacifiCorp has concern about the public use/access and adverse impact on PacifiCorp WHMP lands (developed lands vs. forestry).

Public Comment Opportunity

No public comment was provided.

<12:00 p.m. meeting adjourned>

Agenda items for April 9, 2014

- Review March 12, 2014 Meeting Notes
- Project Updates
- ACC/TCC 2013 Annual Report – Review Comments

Next Scheduled Meetings

April 9, 2014	May 14, 2014
Conference Call	TCC Meeting
Ariel, WA	Merwin Hydro Control Center
9:00am – 11:00am	Ariel, WA
	9:00am – 3:00pm

Attachments:

- March 12, 2014 Meeting Agenda