

**Lewis River Hydroelectric Projects Settlement Agreement
Terrestrial Coordination Committee (TCC)
Meeting Agenda**

Date & Time: **Wednesday, January 11, 2012
9:00 a.m. – Noon**

Place: **Merwin Hydro Facility
105 Merwin Village Court
Ariel, WA 98603**

Contacts: **Kirk Naylor: (503) 813-6619; cell (503) 866-8750
Lore Boles (HCC): (360) 225-4412**

Time	Discussion Item
9:00 a.m.	Welcome <ul style="list-style-type: none"> ➤ Preview Agenda ➤ Review, comment and adopt notes of 12/14/11 meeting
9:15 a.m.	➤ Land transaction status
10:20 a.m.	➤ BPA I-5 Corridor Reinforcement Project
11:00 a.m.	➤ Elk & Recreation use study update
11:20 a.m.	➤ 2012 Forest Management Plans
11:50 a.m.	<ul style="list-style-type: none"> ➤ Next Meeting's Agenda ➤ Public Comment Opportunity ➤ Note: all meeting notes and the meeting schedule can be located at: http://www.pacificorp.com/es/hydro/hl/lr.html#
Noon	<i>Adjourn</i>

To attend a Voice Conference:

Call 503-813-5600 (toll free #800-503-3360), follow the instructions provided and enter Meeting ID: **101101** and password: **101101** when prompted.

Meeting Notes
Lewis River License Implementation
Terrestrial Coordination Committee (TCC) Meeting
January 11, 2012
Hydro Control Center, Ariel, WA

TCC Participants Present: (11)

LouEllyn Jones, USFWS (phone)
 Bob Nelson, RMEF
 Bill Richardson, RMEF
 Ray Croswell, RMEF
 Peggy Miller, WDFW
 Eric Holman, WDFW
 Nathan Reynolds, Cowlitz Indian Tribe
 Erik White, Cowlitz Indian Tribe
 Kirk Naylor, PacifiCorp Energy
 Kendel Emmerson, PacifiCorp Energy
 Arianne Poindexter, PacifiCorp Energy

Calendar:

February 8, 2012	TCC Meeting at Merwin HCC	HCC
March 14, 2012	TCC Meeting at Merwin HCC	HCC
March 14-15, 2012	Tour of Units 6, 15 and 25 for proposed 2012 forest management actions	Lewis River Project Area

Parking lot items from April 13, 2011 Meeting	Status
Naylor: Provide TCC with Riparian Management Plan for review.	Pending

Assignments from October 12, 2011 Meeting:	Status
Naylor and Richardson will inquire as to the cost of acquiring the mineral rights in conjunction with the land purchase and report back to the TCC	In Progress

Review of Agenda and Finalize Meeting Notes

Kirk Naylor (PacifiCorp Energy) called the meeting to order.

Agenda reviewed and approved. No additions.

The December 14, 2011, meeting notes were reviewed and approved as presented. No changes.

*******CONFIDENTIAL SECTION BEGINS*******

Lands Update

BPA I-5 Corridor Reinforcement Project

Elk-Equestrian Study Update

Emmerson conducted field observations on December 16, 2011; no elk were sighted but one was heard. Another field observation was conducted the week of January 2, 2012 at dusk, no elk were observed, but there were signs of recent elk use at the farm. A dawn survey will be conducted between the dates January 15-31, 2012.

Preliminary recreation use data collected to date:

- Hiking/Walking 72%
- Biking 3%
- Horse Riding 10%
- Hunting 10%
- ATV 4%
- Animals sighted: deer, elk, cougar, coyote, raccoon, beaver

No survey postcards have been received to date. Survey period will last until April 15, 2012. If insufficient data is collected this first year the survey can be extended to include another year.

Kendel will present a PowerPoint to the group at the February meeting.

2012 Forest Management Plans

Maps, with buffers indicated, of Units 6, 15, and 25 were handed out to the group. Kirk briefly reviewed the buffer zones. The TCC will have the opportunity to review the proposed sites in March.

Unit 15:

- The first of two years of accipiter surveys are complete. Only confirmed known osprey nest as occupied located outside the harvest area.
- Cutting will begin in summer/fall following final accipiter survey.
- Proposal is to remove over-mature alder and replace with mixed conifer. Area consists of salmonberry and devil's club in understory currently. This area could be successful with cedar but with browse damage issues and costs, Douglas-fir mixed with hemlock is recommended.
- Additionally proposing to commercially thin and work on understory improvement of a 27-year-old conifer stand.
- Existing meadow area needs approximately 20 alders removed to improve forage conditions and increase forage area.
- Harvest boundary as proposed removes some alders adjacent the entrance road and within a riparian buffer to a seasonal, non-fish stream.
- Buncombe Hollow Road: county road approximately 1 ½ lanes wide, dirt and gravel, dead ends but is used by DNR logging trucks and residents (4-5 homes). Proposing to remove the mature alders that lean over the road to allow light filtration (increase shrubs along road edge and allow drying of the road) and would remove safety hazards along the road from falling trees.

- Potentially replacing gate in Unit 15 or re-painting it.
- Build a berm along the Buncombe Hollow road to prevent continued and future ATV trespass.

Unit 25:

- The first of two years accipiter surveys are complete. Potentially a red-tailed hawk nest, but it appears to be outside of the survey area.
- This area is closed to hunting because it is within the Swift Dam and Canal operations area. As a result it has tremendous year round elk use.
- There is a large wetland near the proposed timber harvest areas that could use some dike rebuilding in sections. Perhaps get dirt from this section after or during harvest?
- David Moore is preparing a cultural/historic plan for this unit.
- Propose additional harvest of maple and cottonwood (see area on handout) on eastern boundary within a stream buffer. This stream is a ditch that drains from the wetland.

Unit 6:

- The first of two years of accipiter surveys are complete.
- This unit has been commercially thinned in the past (different years for different parts ranging from 1988 to 1998) to thin the overstory and enhance development of understory shrubs. The understory never developed adequate forage or understory shrubs and the stand is now a closed canopy again with average diameters exceeding 21” dbh.
- A portion of this timber harvest area was visited with WDFW as a potential site for the RMEF tour.
- Propose to log around “oak tree islands” to enhance light and remove encroachment of conifer.

TCC consensus reached that units 6, 15, and 25 will be visited over consecutive days, March 14-15, 2012. March 14 agenda will be TCC meeting in the morning, visit a unit in the afternoon. Remaining unit(s) visited on March 15.

Unit 33:

- Pre-commercial thinning in plantations is currently underway to reduce the stocking level of the purchased property.

Unit 10:

- Proposed commercial thinning of the property purchased in 2010 near Saddle Dam. Kirk will include in the 2012 plan.
- No accipiter surveys would be required because there is no potential habitat.

Miscellaneous

RMEF Professional’s Day, June 22-23, 2012 at Starkey Experimental Forest near La Grande, OR

Kirk needs to schedule meeting with USDA Forest Service to discuss 2012 action plan for Forest Road 90.

Kirk will schedule annual meeting with law enforcement to discuss the focus of 2012.

Next Meeting's Agenda

- Review of 01/11/12 Meeting Notes
- BPA I-5 Corridor Reinforcement Project
- Lands Acquisition Update
- Elk Survey Update with PowerPoint including pictures!!
- Proposed tour of units 6, 15, and 25 on March 14 & 15, 2012

Public Comment Opportunity

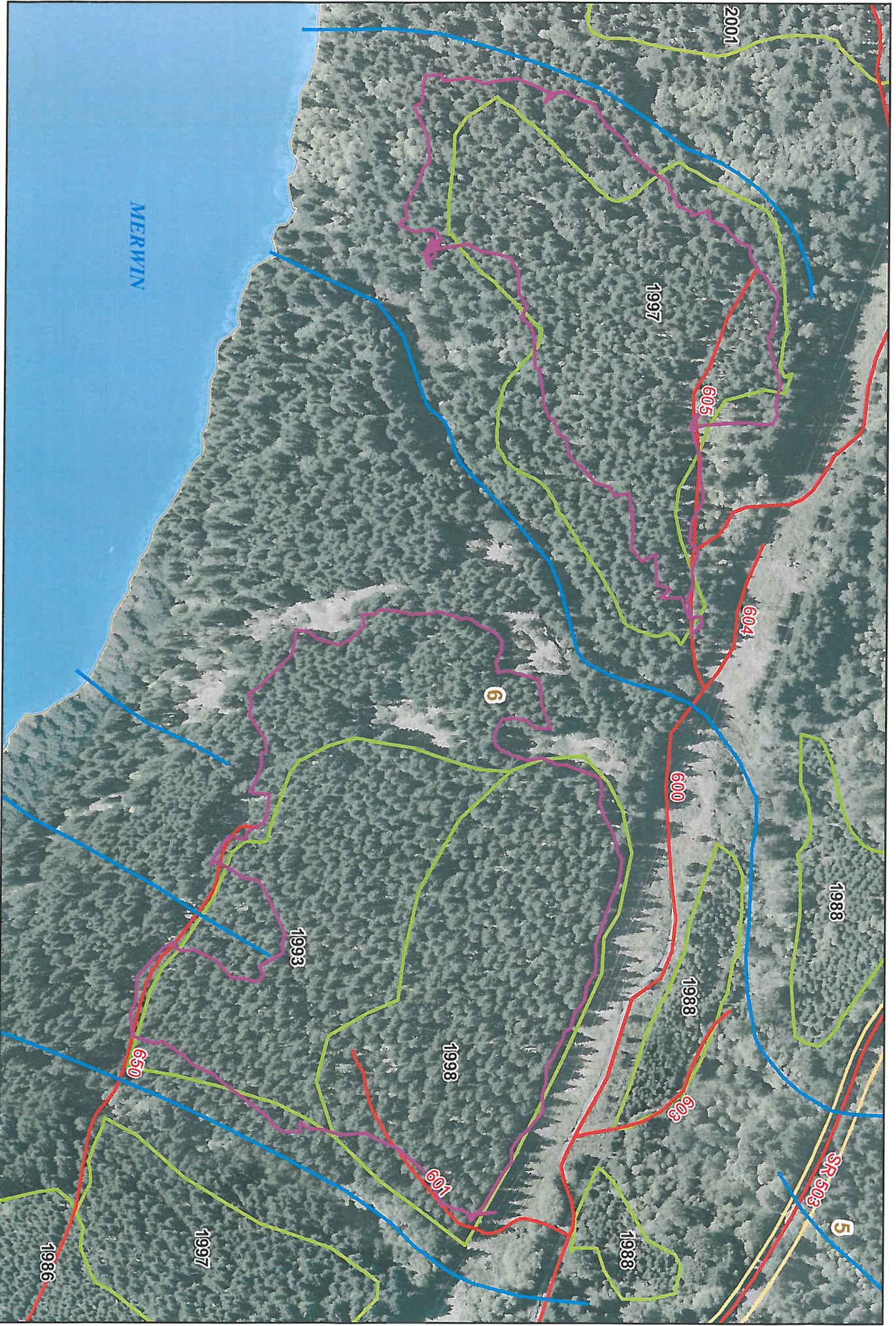
No public comment was provided.

Next Scheduled Meetings

February 8, 2012	March 14, 2012	March 15, 2012
TCC Monthly Mtg	TCC Monthly Mtg & Tour of Units 6, 15, 25	Tour of Units 6, 15, 25
Merwin Hydro Control Center	Merwin Hydro Control Center	Merwin Hydro Control Center
Ariel, WA	Ariel, WA	Ariel, WA
9:00am – 3:00pm	9:00am – 5:00pm	9:00am – 5:00pm

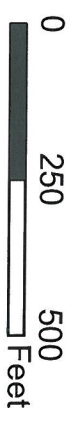
Attachments:

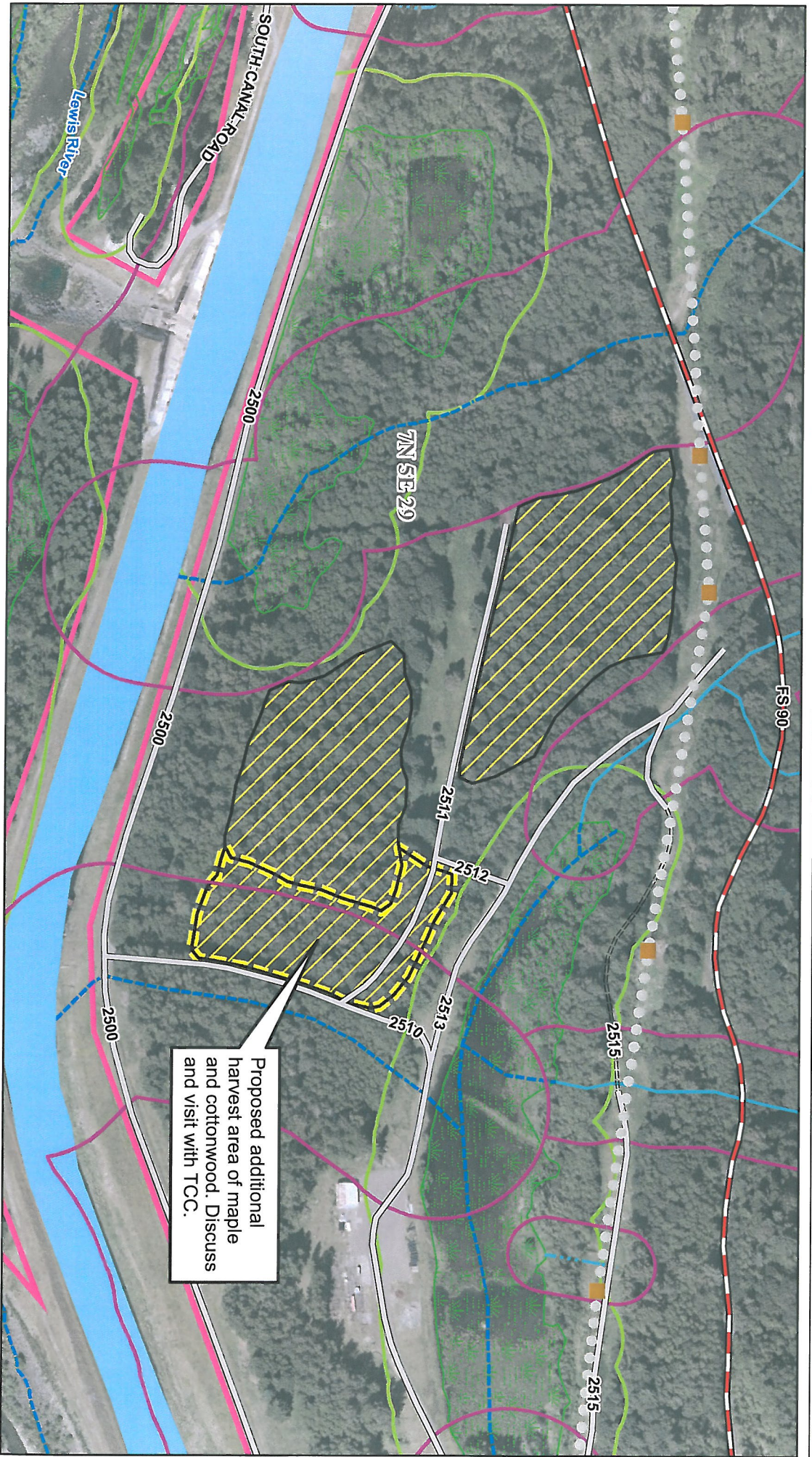
- Lewis River Proposed Harvest Areas 2012 – Unit 6 Map
- Unit 25 2011 Proposed Harvest Areas Map
- Unit 15 – 2012 Forestry Map



Lewis River
Proposed Harvest Areas
2012 - Unit 6

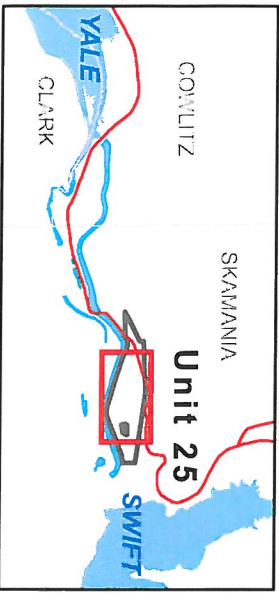
- Stream
- Past Harvest (Year)
- Unit 6 Traverse
- Management Unit Outline
- Road





Unit 25

2011 Proposed Harvest Areas

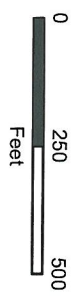


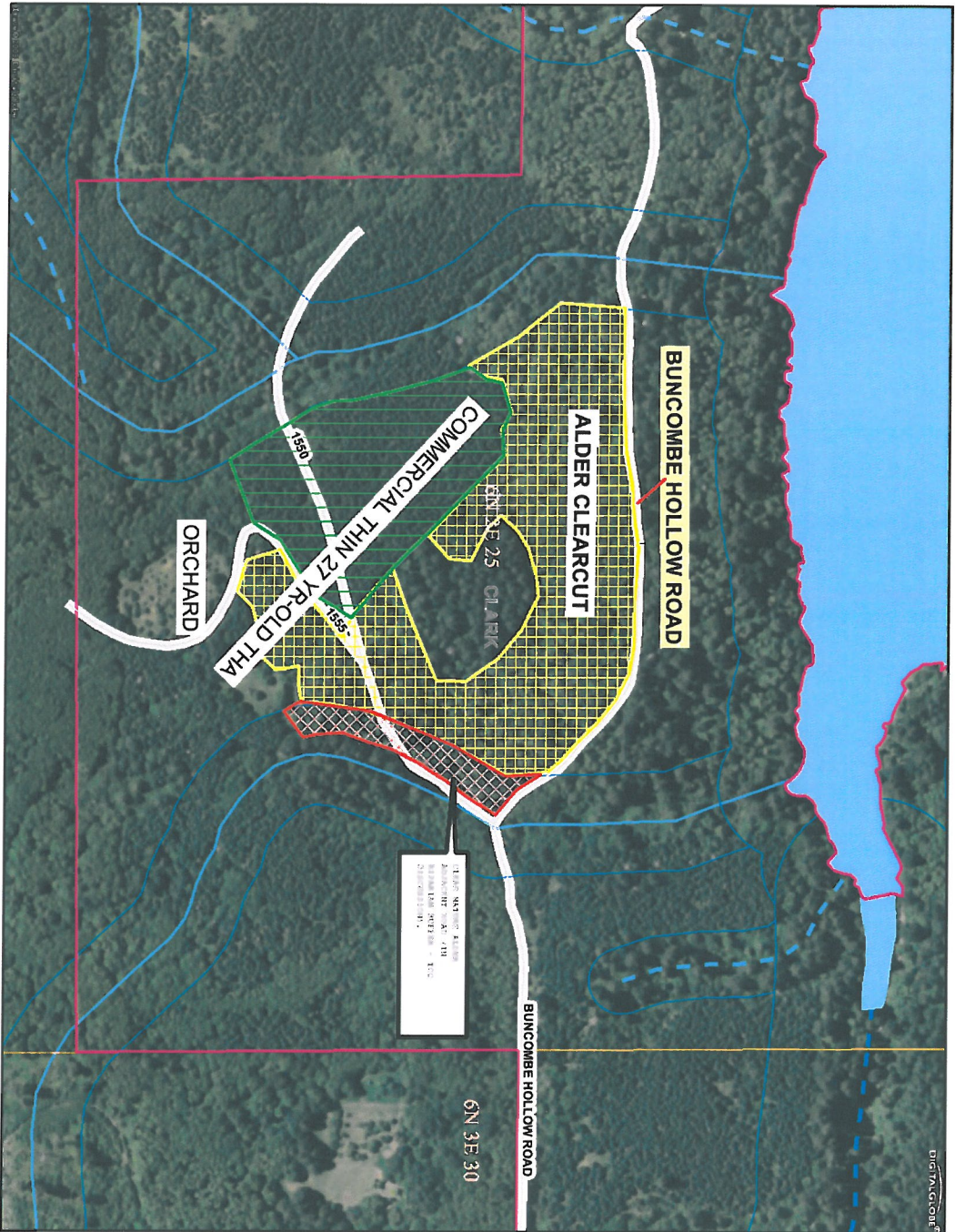
Legend			
	Highway		PacificCorp Ownership
	Road		Proposed Harvest
	Abandoned Road		Stream Buffer
	Fish Stream		Wetland Buffer
	Non-fish Perennial		Wetland
	Non-fish Seasonal		Water Body
	Other Stream		

PACIFICCORP ENERGY
A DIVISION OF PACIFICCORP

GIS Support Services
Solutions Group
gisdept@pacificcorp.com

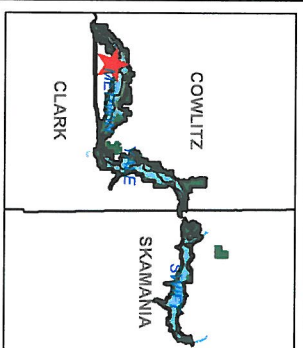
Data are projected in UTM Zone 10, NAD83, meters.
No Warranty: With respect to any information, including but not limited to the Confidential Information, which a Party furnishes or otherwise discloses to another Party for the purpose of evaluating or completing, it is understood and agreed that the Disclosing Party does not make any representations or warranties as to the accuracy, completeness or fitness for a particular purpose thereof. It is further understood and agreed that no Party or its Representatives shall have any liability or responsibility to another Party or to any other person or entity resulting from the use of any information so furnished or otherwise provided pursuant to this Agreement.





This map is a user generated static output from an Internet mapping site and is for general reference only. Data layers that appear on this map may or may not be accurate, current, or otherwise reliable. THIS MAP IS NOT TO BE USED FOR NAVIGATION.

Notes: RETAIN ALL CONIFER IN CLEARCUT BOUNDRY.



Legend

- Hydro
- Geothermal
- Thermal
- Wind
- Biomass
- ⊕ Surveyed Corner
- ⊕ Surveyed Section Corner
- ⊕ Surveyed Property Corner
- ⊕ PacificCorp Transmission Pole
- ⊕ Road
- ⊕ PacificCorp Transmission Line
- ⊕ County
- ⊕ PacificCorp Ownership
- ⊕ Section
- ⊕ Stream Buffer
- ⊕ Stream
- ⊕ Fish Stream
- ⊕ Non-Fish Perennial
- ⊕ Non-Fish Seasonal
- ⊕ Other

