

# **AQU 1 Appendix 1**

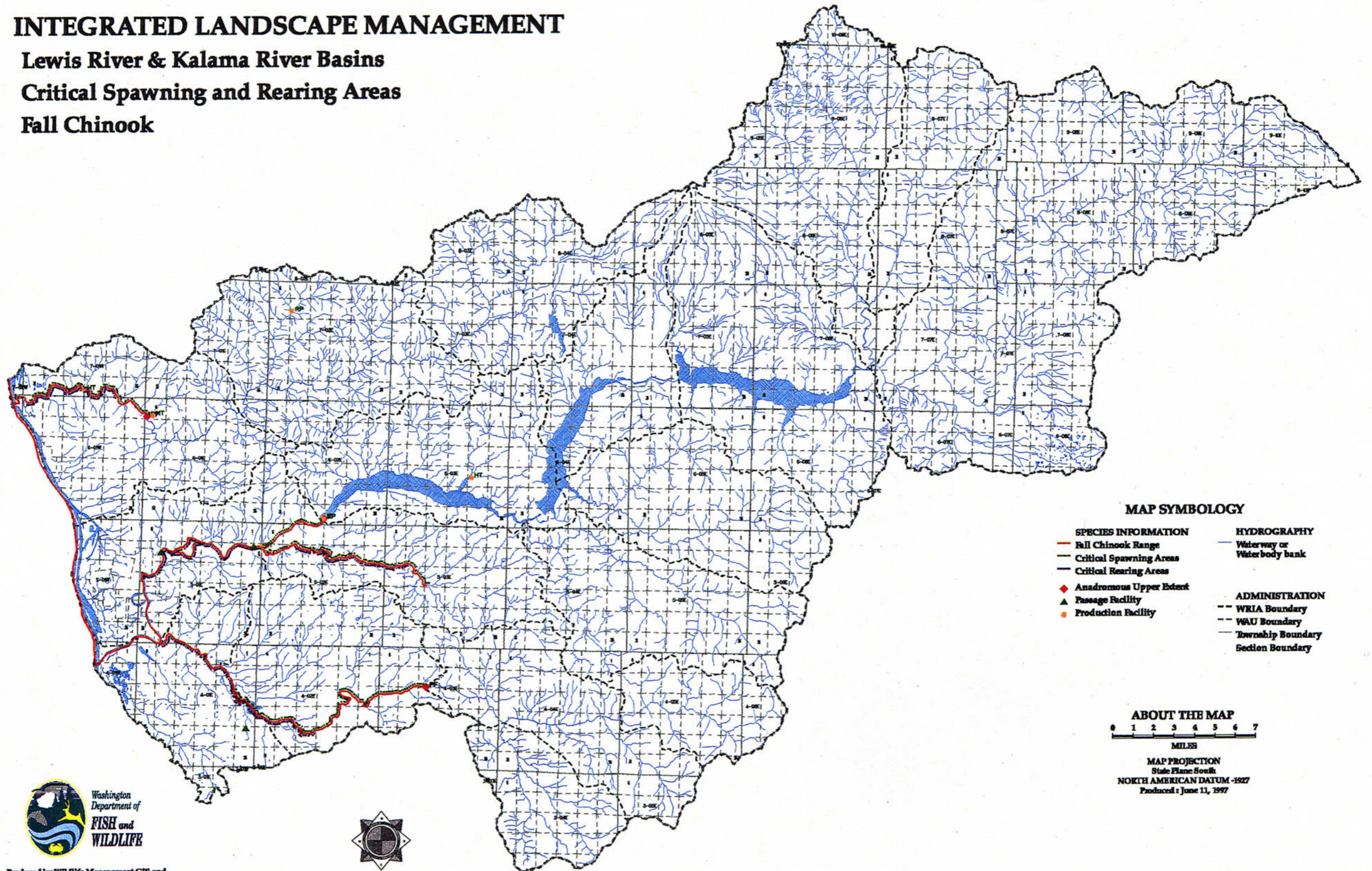
---

*Fish Distribution Maps*

This page intentionally blank.

# INTEGRATED LANDSCAPE MANAGEMENT

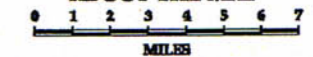
## Lewis River & Kalama River Basins Critical Spawning and Rearing Areas Fall Chinook



### MAP SYMBOLOLOGY

- | SPECIES INFORMATION       | HYDROGRAPHY                  |
|---------------------------|------------------------------|
| — Fall Chinook Range      | — Waterway or Waterbody bank |
| — Critical Spawning Areas |                              |
| — Critical Rearing Areas  |                              |
| ◆ Anadromous Upper Extent |                              |
| ▲ Passage Facility        |                              |
| ● Production Facility     |                              |
|                           | ADMINISTRATION               |
|                           | --- WRIA Boundary            |
|                           | --- WAU Boundary             |
|                           | --- Township Boundary        |
|                           | --- Section Boundary         |

### ABOUT THE MAP



MAP PROJECTION  
State Plane South  
NORTH AMERICAN DATUM -1927  
Produced : June 11, 1997



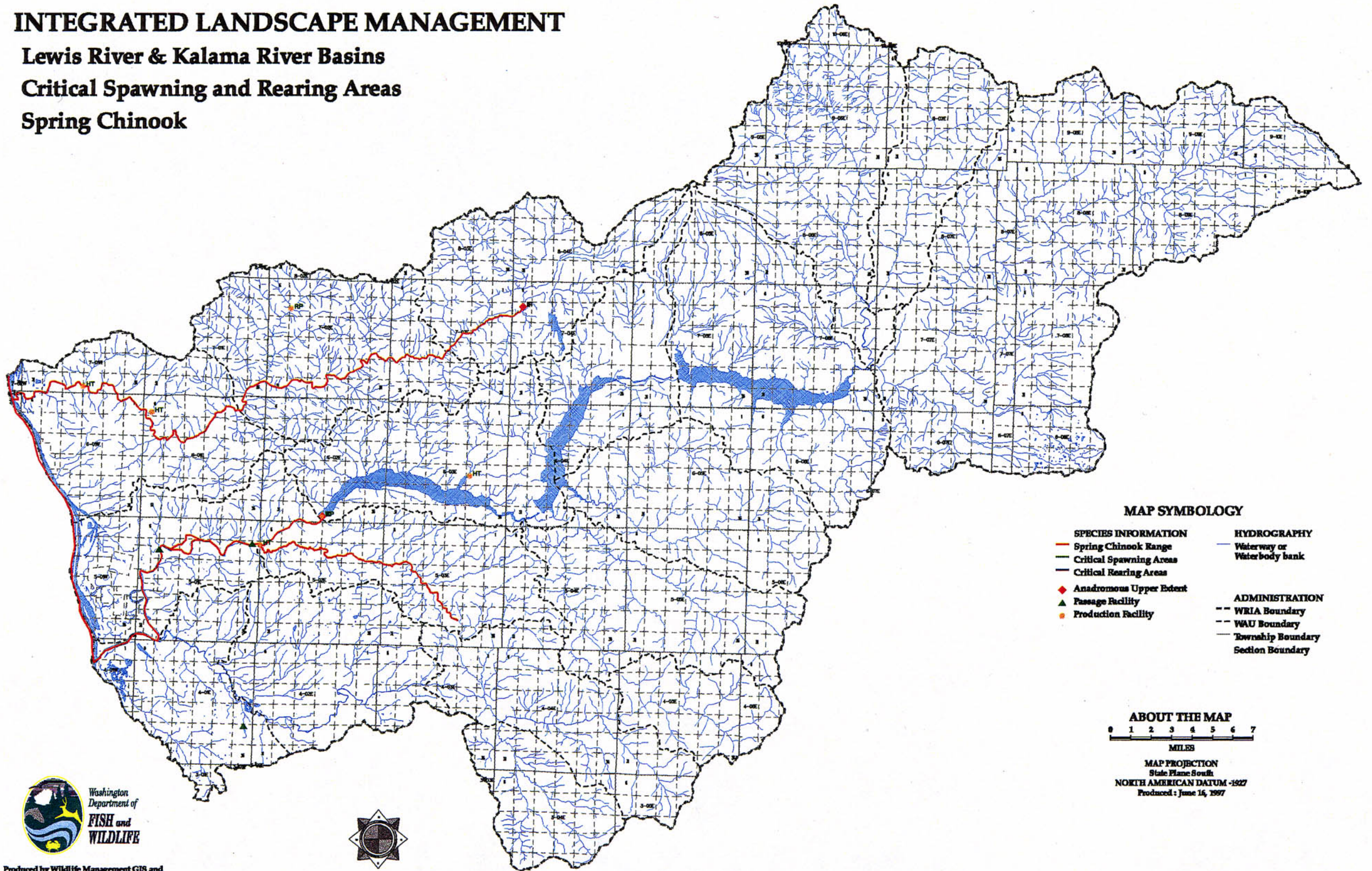
Produced by Wildlife Management GIS and  
Habitat Management GIS



Map 1. Fall chinook distribution.

# INTEGRATED LANDSCAPE MANAGEMENT

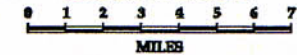
## Lewis River & Kalama River Basins Critical Spawning and Rearing Areas Spring Chinook



### MAP SYMBOLOGY

- |                            |                         |                    |                            |
|----------------------------|-------------------------|--------------------|----------------------------|
| <b>SPECIES INFORMATION</b> |                         | <b>HYDROGRAPHY</b> |                            |
| —                          | Spring Chinook Range    | —                  | Waterway or Waterbody bank |
| —                          | Critical Spawning Areas |                    |                            |
| —                          | Critical Rearing Areas  |                    |                            |
| ◆                          | Anadromous Upper Extent |                    |                            |
| ▲                          | Passage Facility        |                    |                            |
| ●                          | Production Facility     |                    |                            |
| <b>ADMINISTRATION</b>      |                         |                    |                            |
| - - -                      | WRIA Boundary           |                    |                            |
| - - -                      | WAU Boundary            |                    |                            |
| - - -                      | Township Boundary       |                    |                            |
| - - -                      | Section Boundary        |                    |                            |

### ABOUT THE MAP



MAP PROJECTION  
State Plane South  
NORTH AMERICAN DATUM -1927  
Produced : June 16, 1997

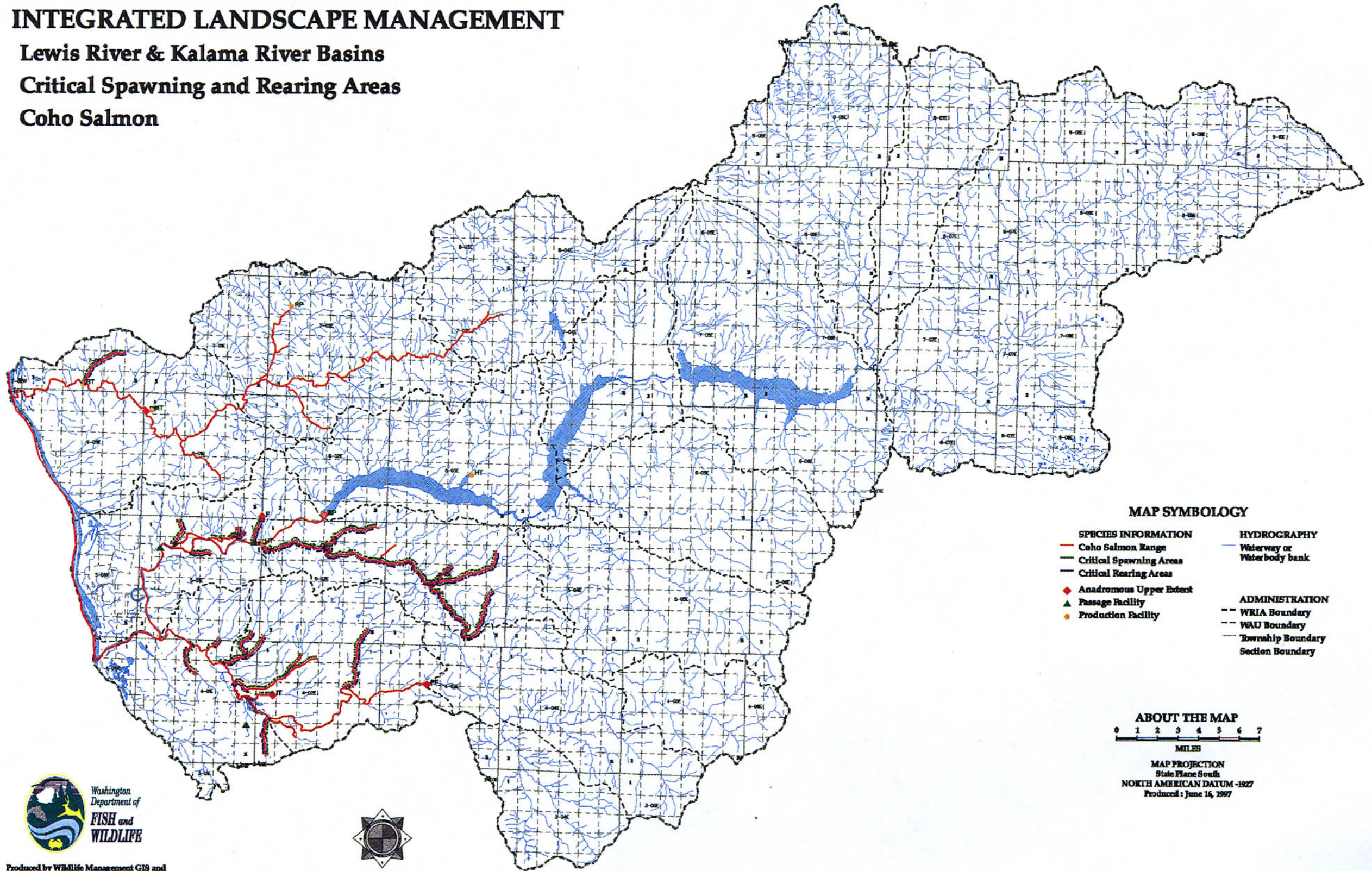


Produced by Wildlife Management GIS and  
Habitat Management GIS

Map 2. Spring chinook distribution.

# INTEGRATED LANDSCAPE MANAGEMENT

## Lewis River & Kalama River Basins Critical Spawning and Rearing Areas Coho Salmon



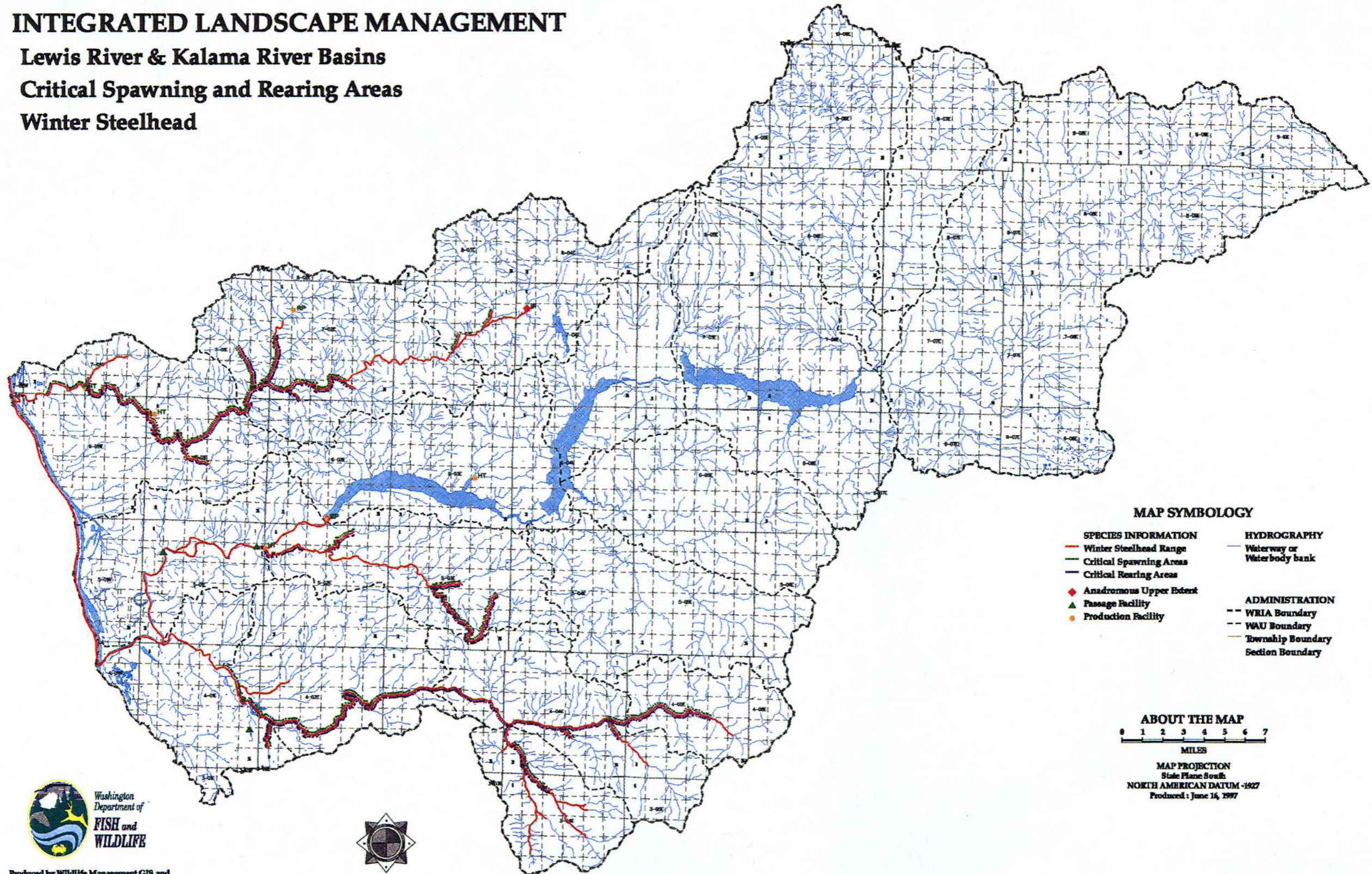
Produced by Wildlife Management GIS and  
Habitat Management GIS



Map 3. Coho salmon distribution.

# INTEGRATED LANDSCAPE MANAGEMENT

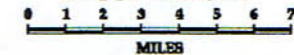
## Lewis River & Kalama River Basins Critical Spawning and Rearing Areas Winter Steelhead



### MAP SYMBOLOGY

- |                            |                              |
|----------------------------|------------------------------|
| <b>SPECIES INFORMATION</b> | <b>HYDROGRAPHY</b>           |
| — Winter Steelhead Range   | — Waterway or Waterbody bank |
| — Critical Spawning Areas  |                              |
| — Critical Rearing Areas   |                              |
| ◆ Anadromous Upper Extent  |                              |
| ▲ Passage Facility         |                              |
| ● Production Facility      |                              |
|                            | <b>ADMINISTRATION</b>        |
|                            | -- WRIA Boundary             |
|                            | ... WAU Boundary             |
|                            | — Township Boundary          |
|                            | — Section Boundary           |

### ABOUT THE MAP



MILES  
MAP PROJECTION  
State Plane South  
NORTH AMERICAN DATUM -1927  
Produced : June 14, 1997



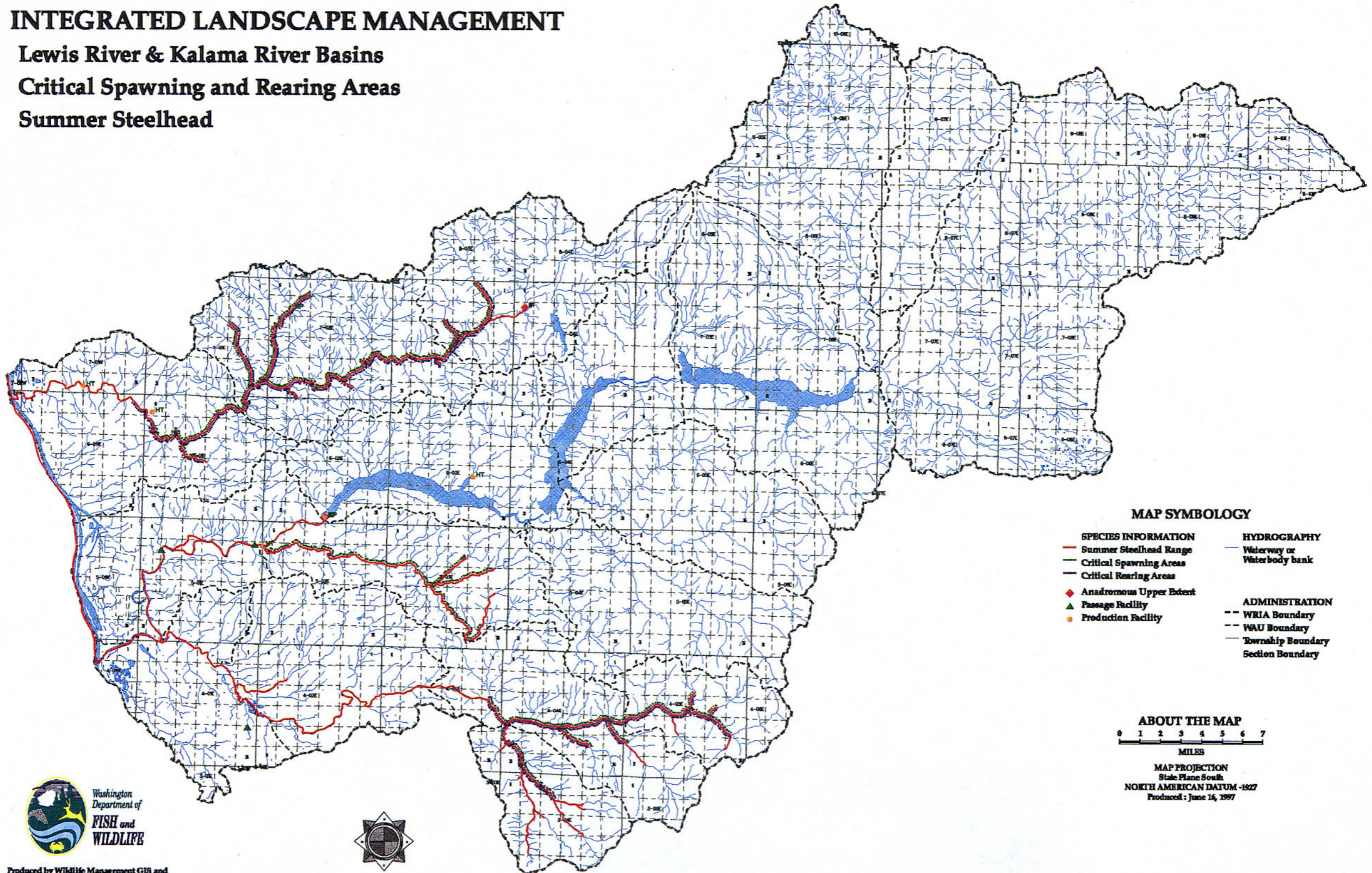
Produced by Wildlife Management GIS and  
Habitat Management GIS



Map 4. Winter steelhead distribution.

# INTEGRATED LANDSCAPE MANAGEMENT

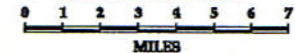
Lewis River & Kalama River Basins  
Critical Spawning and Rearing Areas  
Summer Steelhead



## MAP SYMBOLOGY

- |                            |                              |
|----------------------------|------------------------------|
| <b>SPECIES INFORMATION</b> | <b>HYDROGRAPHY</b>           |
| — Summer Steelhead Range   | — Waterway or Waterbody bank |
| — Critical Spawning Areas  |                              |
| — Critical Rearing Areas   |                              |
| ◆ Anadromous Upper Extent  |                              |
| ▲ Passage Facility         |                              |
| ● Production Facility      |                              |
|                            | <b>ADMINISTRATION</b>        |
|                            | --- WRIA Boundary            |
|                            | --- WAU Boundary             |
|                            | — Township Boundary          |
|                            | Section Boundary             |

## ABOUT THE MAP



MILES

MAP PROJECTION  
State Plane South  
NORTH AMERICAN DATUM -1927  
Produced : June 16, 1997



Produced by Wildlife Management GIS and  
Habitat Management GIS



Map 5. Summer steelhead distribution.