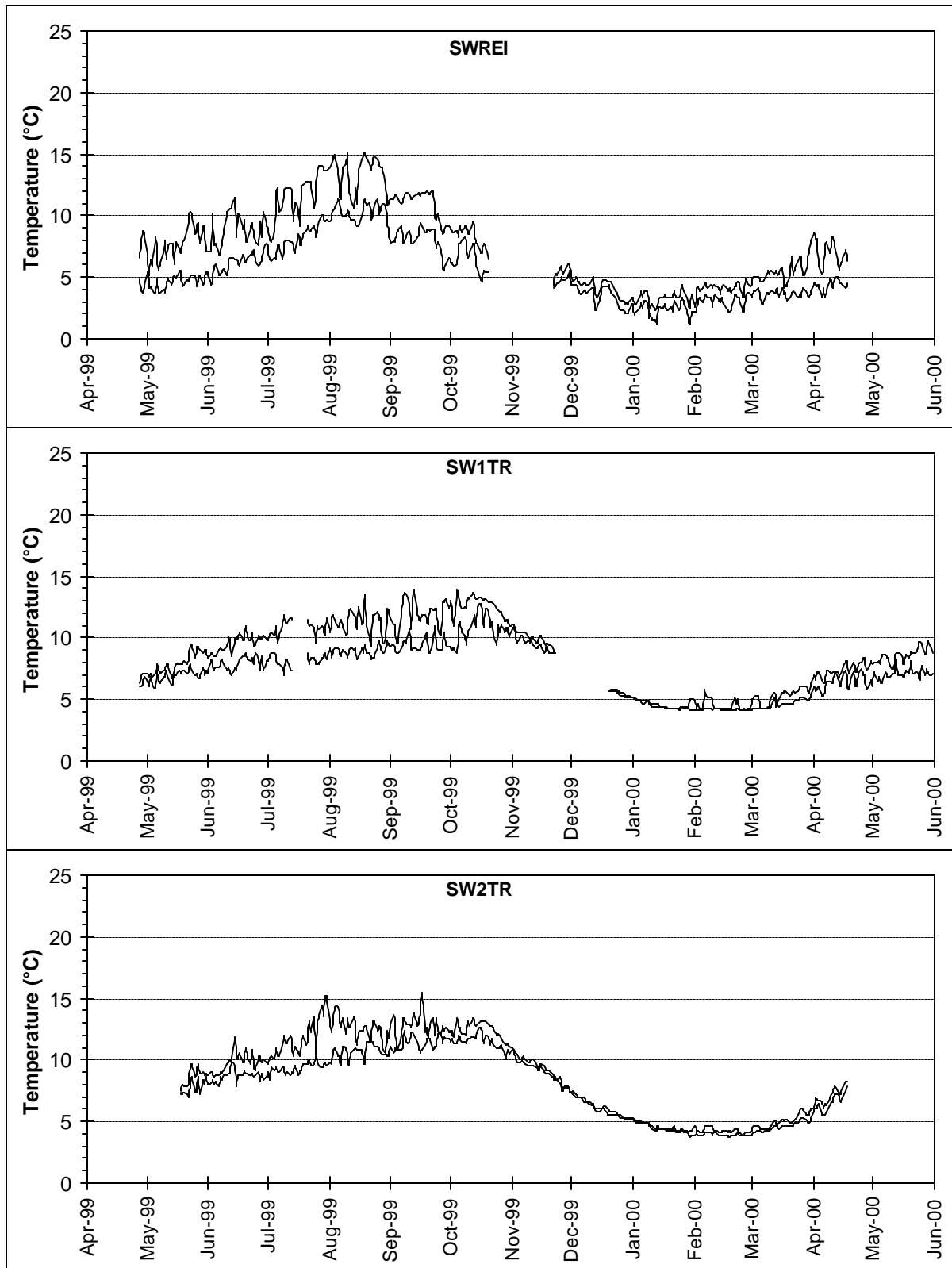


## **WAQ 1 Appendix 2**

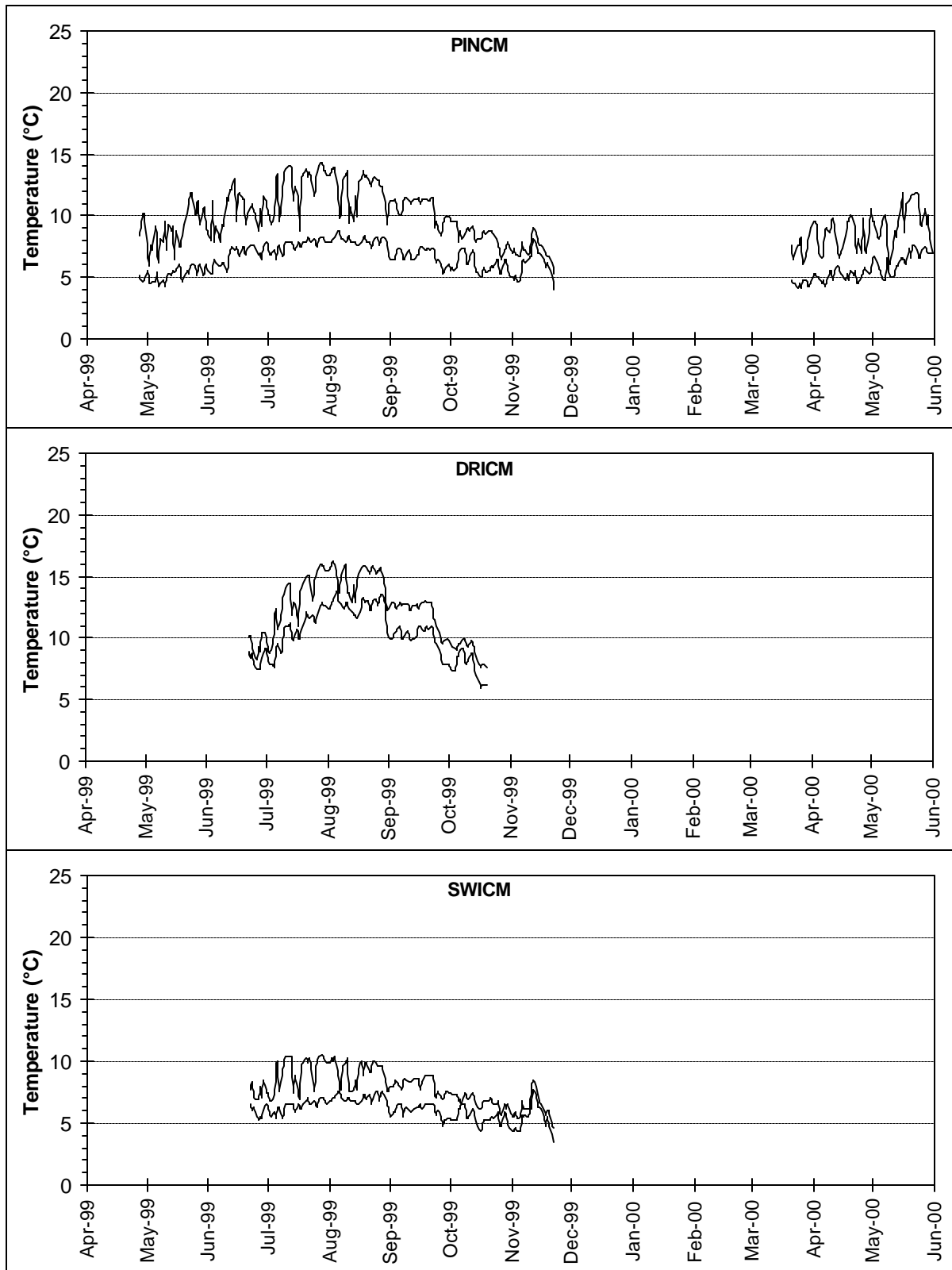
---

*Plots of Minimum and Maximum Temperatures*

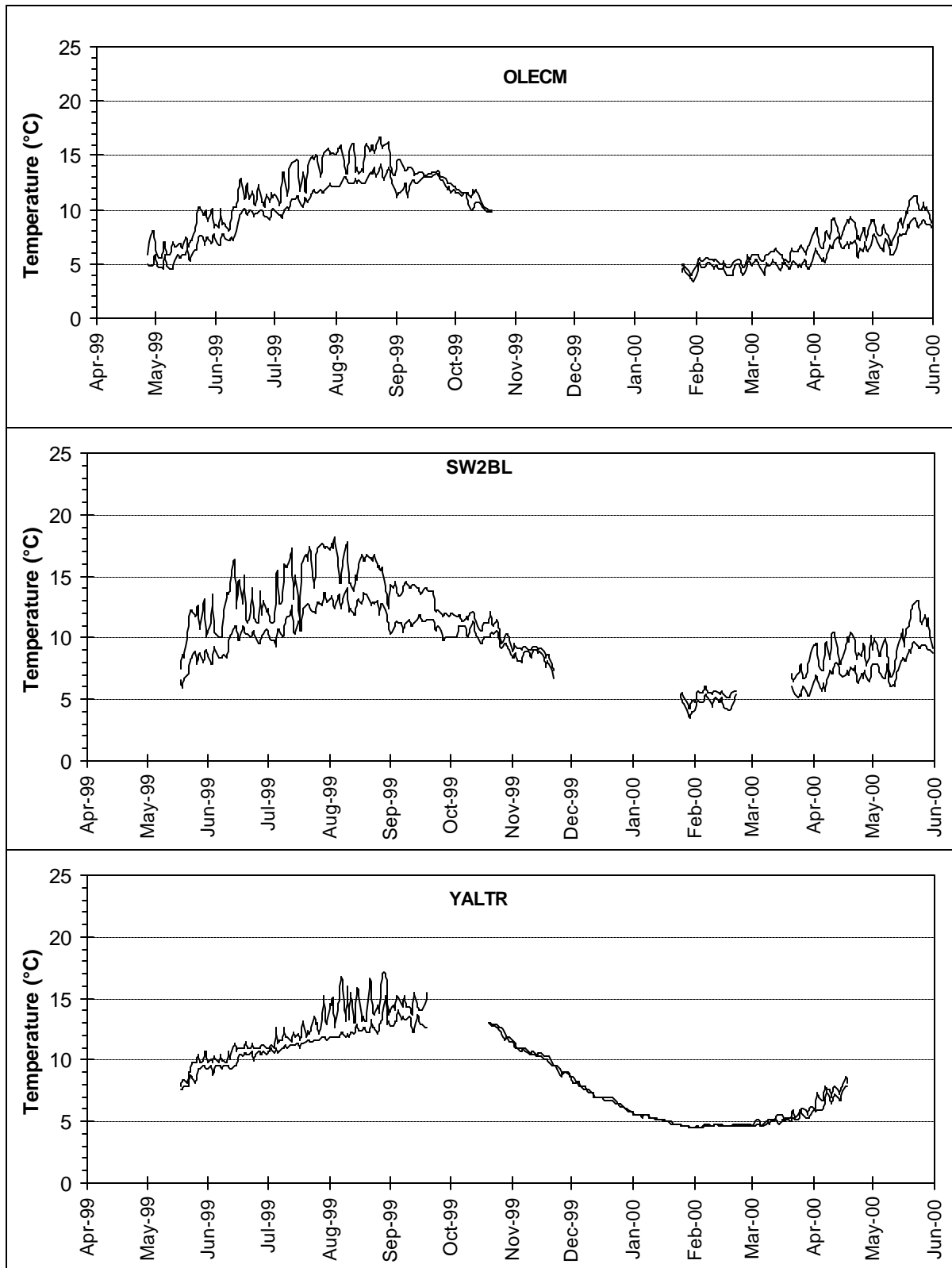
This page intentionally blank.



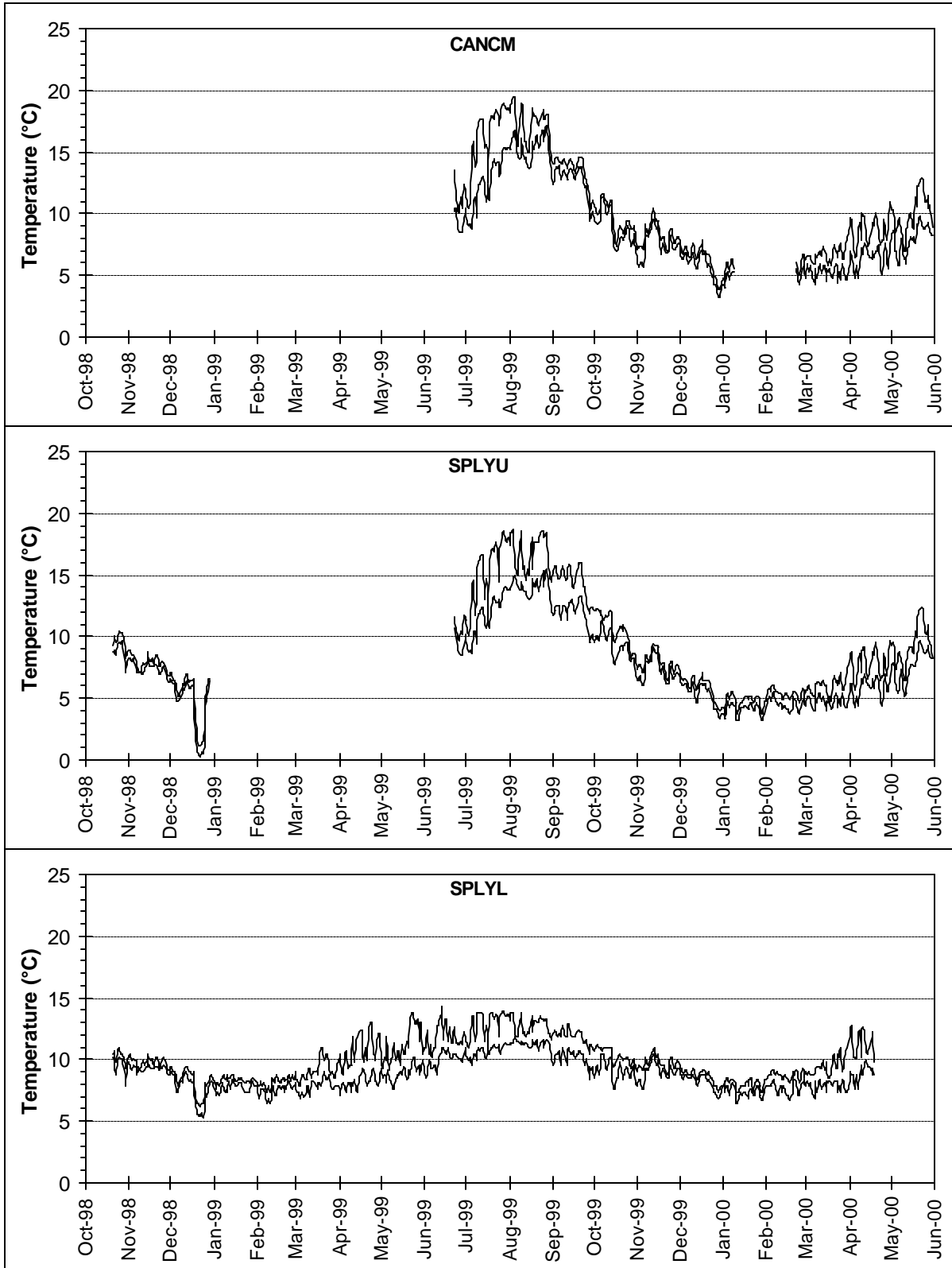
WAQ1 Appendix 2 (a). Daily minimum and maximum temperatures recorded at Lewis River monitoring sites at Swift Reservoir inflow, Swift Tailrace #1, and Swift Tailrace #2 (SWREI, SW1TR, SW2TR).



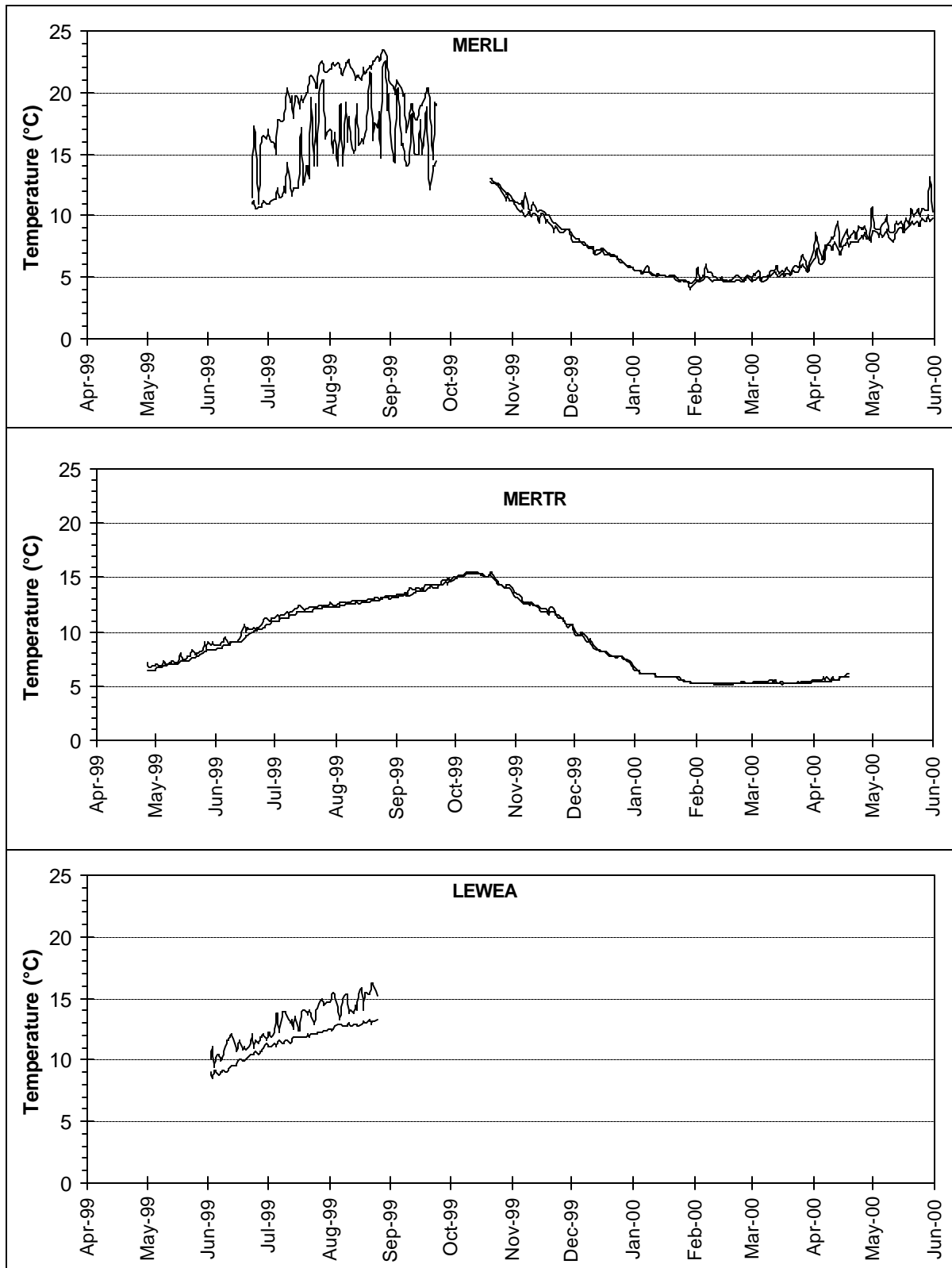
WAQ1 Appendix 2 (b). Daily minimum and maximum temperatures recorded at Lewis River monitoring sites in Pine Creek, Drift Creek, and Swift Creek (PINCM, DRICM, SWICM).



WAQ1 Appendix 2 (c). Daily minimum and maximum temperatures recorded at Lewis River monitoring sites in Ole Creek, Lewis River Bypass Reach Lower, and Yale Lake Tailrace (OLECM, SW2BL, YALTR).



WAQ1 Appendix 2 (d). Daily minimum and maximum temperatures recorded at Lewis River monitoring sites in Canyon Creek, Upper Speelyai Creek, and Lower Speelyai Creek (CANCM, SPLYU, SPLYL).



WAQ1 Appendix 2 (e). Daily minimum and maximum temperatures recorded at Lewis River monitoring sites at Lake Merwin inflow, Lake Merwin Tailrace, and Lewis River at Eagle Island (MERLI, MERTR, LEWEA).