

**Wallowa Falls Hydroelectric Project  
FERC Project No. P-308**

**Draft**

**Recreation and Aesthetic/Visual Resource  
Management Plan**



*Prepared by:*

**CH2MHILL®**

February, 2014



---

## TABLE OF CONTENTS

Section	Page
ACRONYMS AND ABBREVIATIONS .....	V
1.0 INTRODUCTION .....	1
1.1 Purpose and Intent.....	1
1.2 Goals .....	2
2.0 PLAN IMPLEMENTATION .....	5
2.1 Recreation and Aesthetic/Visual Resource Capital Improvements .....	5
2.1.1 Capital Improvement Responsibilities .....	5
2.1.2 Recreation and Aesthetic/Visual Resource Capital Improvement Descriptions .....	5
2.1.3 Capital Improvement Implementation Schedule .....	5
2.1.4 Americans with Disabilities Act (ADA) Compliance .....	6
2.2 Annual Operations and Maintenance (O&M) Responsibilities .....	6
2.2.1 Description of Operations and Responsibilities.....	6
2.2.2 Annual O&M Cost Sharing and Fund Leveraging .....	6
2.2.3 Annual O&M Responsibilities.....	6
2.2.4 Annual O&M Schedule.....	6
2.2.5 Recreational Use and Maintenance of Project-related Roads .....	7
2.3 Recreation Monitoring, Reporting, and Public Information .....	7
2.3.1 Recreation Monitoring .....	7
2.3.2 Recreation Reporting .....	7
2.3.3 Recreation Public Information .....	7
3.0 PLANNING AND COORDINATION.....	9
3.1 Agency and PacifiCorp Responsibilities .....	9
3.2 Annual Recreation and Aesthetic/Visual Resources Review and Meeting .....	10
3.3 Environmental Compliance, Approvals, and Permitting .....	11
4.0 REVISIONS AND UPDATES .....	12

### Exhibits

Exhibit A: Capital Improvements

    Table A-1: Capital Improvements Summary

    Table A-2: Descriptions of Capital Improvements

Exhibit B: Operations and Maintenance Responsibilities

Exhibit C: FERC Form 80

---

## **Attachments**

- A-1 Capital Improvements Near Terminus of Joseph-Wallowa Lake Highway
- A-2 Capital Improvements within Wallowa-Whitman National Forest in Vicinity of Project Dam and Forebay
- A3 Capital Improvements at Pacific Park Campground
- A4 Photographs of Pacific Park Campground



---

## Acronyms and Abbreviations

ADA	Americans with Disabilities Act
FERC	Federal Energy Regulatory Commission
Forest Plan	Wallowa-Whitman National Forest Land and Resource Management Plan
Ha	Hectare
I&E	interpretation and education
NEPA	National Environmental Policy Act
OPRD	Oregon Parks and Recreation Department
O&M	operations and maintenance
Project	Wallowa Falls Hydroelectric Project
RRMP	Recreation and Aesthetic/Visual Resource Management Plan
USDA-FS	United States Department of Agriculture, Forest Service
WWNF	Wallowa-Whitman National Forest



---

## 1.0 INTRODUCTION

PacifiCorp Energy (PacifiCorp) is filing an application for subsequent (new) minor license for the Wallowa Falls Hydroelectric Project (Project), Federal Energy Regulatory Commission (FERC) Project No. 308, on the East Fork Wallowa River, West Fork Wallowa River, and Royal Purple Creek in Wallowa County, Oregon. The current license will expire on February 28, 2016. The Project has a generation capacity of 1,100 kilowatts and produces an average of 7 million kilowatt hours annually. The proposed Project boundary occupies a total of 28.3 acres (11.5 ha), 15.2 acres (6.2 ha) of private land owned by PacifiCorp, 0.4 acres (0.2 ha) of state land controlled by the Oregon Department of Transportation, and 12.7 acres (5.1 ha) of federal land managed by the Wallowa-Whitman National Forest (WWNF).

Recognizing that Project facilities have induced public recreation needs near the Project, PacifiCorp, after consultation with the USDA-FS, Oregon Parks and Recreation Department (OPRD), Wallowa County, and other interested parties, acknowledges responsibility for providing appropriate resources to meet existing and future recreation needs. PacifiCorp also acknowledges that Project facilities influence the aesthetic and visual character and quality of locations near the Project, which can influence the experiences of recreationists and other viewers. Because part of the Project is located within the WWNF and because trails providing public access to parts of the WWNF pass through PacifiCorp land (both within and outside of the FERC Project boundary), the USDA-FS also shares responsibility for managing some recreation resources. PacifiCorp has prepared this Recreation and Aesthetic Resource Management Plan (RRMP) as part of the Project relicensing process. This RRMP has been prepared to implement PacifiCorp's protection, mitigation, and enhancement measures related to the recreation and aesthetic/visual resources that were developed to address the effects of the continued operation of the Project on the existing area resources as required by Code of Federal Regulations Title 18, Section 5.16.

### 1.1 Purpose and Intent

The purpose of this RRMP is to effectively guide developing and managing existing and future Project recreation and aesthetic/visual resources. This RRMP establishes goals for managing recreation and aesthetic/visual resources near the Project, identifies measures for enhancing existing recreation and aesthetic/visual resources, describes enhanced existing and new facilities, and, identifies programs developed to implement the measures and facility improvements or construction.

This RRMP is an implementation tool to be used to guide, design, construct, renovate, monitor, fund, operate, and maintain existing and future public recreation facilities and programs within the FERC Project boundary and improve the condition of aesthetic/visual resources. Facilities identified in the RRMP will be used throughout the term of the new license.

Based on the results of the recreation and aesthetic/visual resource studies that were conducted as part of relicensing as well as input from stakeholders during consultation,

---

PacifiCorp proposes a number of recreation and aesthetic/visual resource measures. To assist with implementing these measures, this RRMP defines and describes recreation and aesthetic/visual resource facility capital improvements, facility operations and maintenance (O&M), funding, *Wallowa-Whitman National Forest Land and Resource Management Plan* (USDA-FS, 1990) compliance, monitoring, public information, and reporting.

This RRMP is a culmination of a process that began with development and agency approval of the scopes of the recreation and aesthetic/visual resource studies for relicensing in 2010, continued with implementation of the studies between 2011 and 2012, and culminated with presentation of study results to stakeholders in 2012 and 2013. CH2M HILL conducted the studies for PacifiCorp, and the studies' findings are detailed in the *Updated Study (Final Technical) Report for Recreation Resources* (PacifiCorp, 2013a) and the *Updated Study (Final Technical) Report for Aesthetic and Visual Resources* (PacifiCorp, 2013b) that were filed with the FERC in January 2014. In addition, several Project meetings and follow-up conference calls were held with USDA-FS and OPRD staff to explore potential measures and review proposed measures developed by the group.

## 1.2 Goals

To meet the RRMP purpose and intent, PacifiCorp developed goals and objectives that guide existing and future recreation planning and design activities near the Project and aesthetic/visual resource enhancements, as well as also guide overall decision-making during the term of the new license. The goals and their respective objectives for Project-related recreation and aesthetic/visual resources are listed below.

**Goal 1:** Protect, enhance, and maintain public recreation resources.

- Objective 1a: Provide and operate recreation facilities located on PacifiCorp lands and within the FERC Project boundary.
- Objective 1b: Provide and support the operation and maintenance of recreation facilities located on PacifiCorp land (within and outside of the FERC Project boundary) by other stakeholders.
- Objective 1c: Provide new and additional signage along trails that pass through PacifiCorp land to make way-finding easier for the public, and provide interpretive facilities to provide information and enhance recreational experiences.
- Protect areas that have been damaged by unauthorized recreational use.

**Goal 2:** Provide for existing and future public recreation needs.

- Objective 2a: Consider existing recreation facility conditions and use, as well as input from stakeholders, regarding providing and/or supporting recreation facilities on

---

PacifiCorp land or trails passing through PacifiCorp land (both within and outside of the FERC Project boundary).

- Objective 2b: Upgrade Pacific Park Campground and provide Americans with Disabilities Act (ADA)-related facilities for the health and safety needs of campground users.
- Objective 2c. Reflect anticipated future recreation needs identified in relevant comprehensive plans when upgrading existing recreation facilities and proposing new facilities.

**Goal 3:** Recreation planning will comply with federal resource management plans.

- Objective 3a: Provide recreation opportunities that are consistent with existing adopted agreements, plans, and policies including the *Wallowa-Whitman National Forest Land and Resource Management Plan* (USDA-FS, 1990).
- Objective 3b: As new management plans are created or existing management plans amended or changed, work with relevant stakeholders to evaluate the consistency of Project recreation facilities with the plans and consider ways to make Project facilities consistent or more consistent.

**Goal 4:** Provide cost-effective recreation facilities.

- Objective 4a: Provide public recreation facilities and activities that are compatible with Project O&M and USDA-FS resource management objectives.
- Objective 4b: Provide public recreation facilities that will consider minimizing capital expenditures and long-term O&M costs.

**Goal 5:** Help Project facilities better integrate into the viewed landscape.

- Objective 5a: Where Project facilities are located within the WWNF, improve their appearance to a reasonable degree and provide interpretive information that better explain the Project's history and operation.
- Objective 5b: Improve the Project appearance near the Project powerhouse.

**Goal 6:** Provide recreation resources that are compatible with other resources and environmental regulations.

- Objective 6a: Provide public recreation facilities and activities that meet environmental regulations, such as the *Wallowa-Whitman National Forest Land and Resource Management Plan* (USDA-FS, 1990), Endangered Species Act, and National Environmental Policy Act (NEPA), as amended.

- 
- Objective 6b: Provide public recreation facilities and activities that are compatible with other Project resources, including cultural, terrestrial, aesthetic, and aquatic resources.
  - Objective 6c: Provide environmental education opportunities—such as viewpoints, interpretive signs, and trails—that interpret the area’s natural, historical, and cultural resources.

---

## 2.0 PLAN IMPLEMENTATION

To meet this RRMP's goals and objectives, four implementation actions have been developed. These four actions are described in Sections 2.1 to 2.4.

### 2.1 Recreation and Aesthetic/Visual Resource Capital Improvements

PacifiCorp will implement the recreation and aesthetic/visual resource capital improvement activities identified in Exhibit A: Capital Improvements. These activities are intended to help meet existing and future recreational needs near the Project by enhancing existing recreation facilities, constructing new facilities, and by improving the condition of aesthetic/visual resources associated with the Project. The capital improvement program identifies funding and construction responsibilities, provides a construction schedule, describes recreation and aesthetic/visual resource enhancements and developments, and identifies ADA compliance. These elements are described below.

#### 2.1.1 Capital Improvement Responsibilities

PacifiCorp will fund the recreation and aesthetic/visual resource capital improvement activities presented in Exhibit A (see Table A-1). PacifiCorp funding for these activities is capped. PacifiCorp will also design and construct or enhance the capital improvement activities identified in Exhibit A, as well as obtain any required Wallowa County permits where appropriate. Issuance of the FERC license (and the NEPA process associated with it) will satisfy all NEPA requirements for activities that will occur within the WWNF under this plan.

#### 2.1.2 Recreation and Aesthetic/Visual Resource Capital Improvement Descriptions

Recreation and aesthetic/visual resource facility enhancements and new facility developments have been identified to help satisfy existing and future Project recreation needs near the Project. These enhancements and developments are described in Exhibit A; Table A-2 describes each enhancement and improvement, while Attachment A contains photographs of existing facilities and conceptual site plans to assist in describing enhancements and developments. The descriptions in Table A-2 and photographs and site plans in Attachment A-1 provide conceptual design guidance only for the enhancement and development projects. Additional detailed design work will be needed to construct each project. Further refined conceptual plans will be required at the time that the projects are initiated. PacifiCorp will manage and/or perform construction-related capital improvement projects. PacifiCorp will also prepare detailed construction documents and submit them to the appropriate agencies for review and approval before actual construction.

#### 2.1.3 Capital Improvement Implementation Schedule

Table A-1 in Exhibit A-1 presents anticipated facility construction and existing facility enhancement timeframes. These timeframes will be reconfirmed during annual recreation and aesthetic/visual resource meetings. PacifiCorp will work with stakeholders to assist in timely construction and enhancement processing. During annual meetings, Project

---

phases or responsibilities might be adjusted, or reassigned to other parties, as long as affected parties mutually agree in advance.

#### 2.1.4 Americans with Disabilities Act Compliance

Two ADA-related facility improvements are identified in Exhibit A. One improvement will be a new two room flush toilet restroom facility at Pacific Park Campground that will be ADA compliant. This facility will be used by campers and potentially by people using the Little Alps Day Use Area, which does not have ADA toilets. Another improvement involves upgrading Campsite 6 which is located near the site of the future new restroom facility to meet ADA accessibility requirements. Both improvements will conform to *ADA Accessibility Guidelines for Buildings and Facilities* (United States Access Board, 2002).

### 2.2 Annual Operations and Maintenance Responsibilities

#### 2.2.1 Description of Operations and Maintenance Responsibilities

This activity defines recreation and aesthetic/visual resource facility maintenance standards with program features further detailed below. Existing and future facility O&M is a required element of recreation and aesthetic/visual resource management plans. As defined in Exhibit B: Operations and Maintenance Responsibilities, PacifiCorp will fund annual O&M of facilities that are located on PacifiCorp land and maintained by PacifiCorp, located on PacifiCorp land and maintained by the USDA-FS, and PacifiCorp facilities located within the WWNF and managed by PacifiCorp. PacifiCorp will schedule and provide necessary O&M for the facilities and actions identified as its responsibility in Exhibit B, as will the USDA-FS for the facilities and actions identified as its responsibility.

#### 2.2.2 Annual Operations and Maintenance Cost Sharing and Fund Leveraging

In the future, PacifiCorp and agencies may engage in annual O&M cost-sharing and fund-leveraging if these will provide added efficiency and cost reduction to the Project. Such activities have not been identified currently, but they could be proposed at the annual recreation and aesthetic/visual resource meeting. If cost-sharing between PacifiCorp and agencies occurs at the Project, then accounting for annual cost-sharing and fund-leveraging will be presented by the participants at the annual meeting.

#### 2.2.3 Annual Operations and Maintenance Responsibilities

Exhibit B defines annual O&M responsibilities for Project-related facilities. PacifiCorp may fund O&M activities to be performed by agencies at selected facilities that are identified in Exhibit B.

#### 2.2.4 Annual Operations and Maintenance Schedule

Exhibit B presents the schedule for annual O&M activities. During the annual recreation and aesthetic/visual resource meeting, PacifiCorp and agencies involved in O&M



---

activities directly related to the Project will discuss and possibly refine the schedule for annual O&M activities at selected facilities.

#### 2.2.5 Recreational Use and Maintenance of Project-Related Roads

The public uses the forebay access road as an alternative to the East Fork Wallowa River Trail to access the WWNF. Much of the forebay access road is located within the WWNF. As defined in Exhibit B, PacifiCorp is responsible for maintaining the portion of the forebay access road located within the WWNF and may, in consultation with the USDA-FS, close public access to the road during maintenance activities.

### 2.3 Recreation Monitoring, Reporting, and Public Information

#### 2.3.1 Recreation Monitoring

PacifiCorp will document the conditions of the recreation facilities identified in Exhibit A at the beginning and end of each peak recreation-use season (before Memorial Day and after Labor Day). Findings related to the part of the Project located within the WWNF will be shared with the USDA-FS at the annual recreation aesthetic/visual resources meeting. The USDA-FS will share the annual data it collects from visitors applying for wilderness visitor permits at the Wallowa Lake Trailhead registration box and the trailhead registration box that will be constructed near Pacific Park Campground. PacifiCorp will collect visitation data for Pacific Park Campground to determine peak use periods, identify number of visitors by month, identify campsite usage, and to complete FERC Form 80 reports (see below).

#### 2.3.2 Recreation Reporting

PacifiCorp will submit Form 80 Reports to the FERC every 6 years (see Exhibit C: FERC Form 80) to report on the recreation use of license required facilities. PacifiCorp will coordinate with the USDA-FS to include relevant data collected by the USDA-FS from the Wallowa Lake Trailhead registration box and the trailhead registration box that will be constructed near Pacific Park Campground. Pacific Park Campground visitation data and Eagle Cap Wilderness registration data will be shared at the annual recreation aesthetic/visual resources meeting.

The USDA-FS will provide PacifiCorp with an annual cost report to track USDA-FS O&M activities described in Exhibit B.

#### 2.3.3 Recreation Public Information

The goal of sign placement, sign type, and other public information related to recreational facilities at the Project is to provide effective, consistent, economical public information that meets Project purposes and PacifiCorp objectives. For recreational facilities located within, the WWNF or leading to (trails) on the WWNF through PacifiCorp land, the informational materials will need to meet USDA-FS objectives. The informational materials are also intended to present a favorable image to the public. Several facilities and activities identified in Exhibit A are informational in nature and are considered to be

---

interpretation and education (I&E) elements. PacifiCorp and participating parties will coordinate activities related to public information and developing I&E elements. This coordination will include developing I&E themes, using similar sign designs where appropriate, and using consistent messages. Coordination activities will occur at annual recreation aesthetic/visual resources meetings and at other times as needed. I&E element messages and materials planned to be placed at Project-related recreation facilities on PacifiCorp lands will be mutually acceptable to the participating parties.

I&E elements on PacifiCorp land both inside and outside the FERC Project boundary will display the PacifiCorp logo. At least one sign within the FERC Project boundary must include FERC “Part 8” signage (a FERC requirement). Signs and interpretive materials within the portion of the Project boundary located within the WWNF will have both the PacifiCorp and USDA-FS logos and will be developed with USDA-FS input to meet both PacifiCorp and USDA-FS objectives. PacifiCorp will coordinate with the USDA-FS on the placement of signs and interpretive materials located on WWNF land and on trails located on PacifiCorp land that lead directly to the WWNF.

---

### 3.0 PLANNING AND COORDINATION

An important part of the RRMP over the term of the new license will be ongoing planning and coordination by PacifiCorp, USDA-FS, and OPRD as conditions change over time. Section 3.1 describes the roles and responsibilities of stakeholders and PacifiCorp, annual reviews, and notification to participants of the annual recreation and aesthetic/visual resource meeting. These elements are discussed below.

#### 3.1 Agency and PacifiCorp Responsibilities

PacifiCorp, as licensee, is primarily responsible for implementing the RRMP. However, since part of the Project is located within the WWNF, the USDA-FS also plays an important implementation role. Part of the FERC Project boundary is located within the WWNF, and USDA-FS-managed trails pass through PacifiCorp land via an easement with PacifiCorp that provides access to the WWNF. Below are the basic roles and responsibilities for the entities involved in implementing the RRMP.

##### PacifiCorp Roles:

- Implement the RRMP, including the funding or implementation of specific recreation actions identified in Exhibits A and B.
- Coordinate the annual recreation and aesthetic/visual resource meeting with stakeholders.
- Participate as a member of the annual meeting.
- Implement the recreation and aesthetic/visual resources capital improvement measures, including recreation and aesthetic/visual resource facility design, engineering, and construction.
- Clean up, restore, and obstruct access to user-created trails on the slope and ridge west of the Pacific Park Campground.
- Coordinate with other Project-related resource management plans, including the *Wallowa Falls Hydroelectric Project Noxious Weed Management Plan*, *Vegetation Management Plan*, and *Access Road Inspection and Maintenance Plan*.
- Fund recreation monitoring utilizing user counts of Pacific Park Campground.
- Submit FERC Form 80 reporting to FERC.
- Conduct periodic (10-year) reviews and potential updates of the RRMP, and track changes.

---

#### USDA-FS Roles:

- Survey USDA-FS trail easements through PacifiCorp property to determine and verify easement locations, as well as the locations of existing trails (which may not be the same as the easements) used and maintained by the USDA-FS to access the WWNF, and survey and mark the locations of the property boundary between PacifiCorp and the WWNF lands where the trails cross.
- After the survey is complete, develop a management approach regarding connections between the Chief Joseph Mountain (#1803) and West Fork Wallowa River Trail (#1820)
- O&M for trails that pass through PacifiCorp land on USDA-FS easements, including trails on easements that are currently managed by the WWNF and trails that are on easements than will be constructed as part of the capital improvement program
- Maintain the new trail to be established along user-created trails that leads to the top of the ridge between the Pacific Park Campground and the West Fork Wallowa River Gorge. Portions of this trail may be within the existing USDA-FS trail easement.
- Collect and tabulate wilderness permit data from registration boxes located at the Wallowa Lake Trailhead and the new registration box near Pacific Park Campground that will be constructed as part of the capital improvement program.
- Participate with PacifiCorp, interested tribes, and other participating parties in the planning of I&E elements and signage that will be developed for the Project.
- Participate in the annual recreation and aesthetic/visual resource meeting.

#### OPRD Roles:

- Participate with PacifiCorp, interested tribes, and other participating parties in the planning of I&E elements and signage that will be developed for the Project.
- Participate as a member of the annual recreation and aesthetic/visual resource meeting.

### 3.2 Annual Recreation and Aesthetic/Visual Resources Review Meeting

To facilitate efficient coordination and action between the parties, an annual recreation and aesthetic/visual resource meeting will be held before March 1, each year or, if March 1 is not possible, before the end of November. The purpose of this annual meeting will be to accomplish the following:

- For the first several annual meetings, determine progress made implementing the capital improvements described in Exhibit A.

- 
- Determine progress accounting by reviewing, reconciling, and preparing for approval the previous fiscal year's accomplishments, accrued costs, and cost-sharing accounting.
  - Determine policy changes

### 3.3 Environmental Compliance, Approvals, and Permitting

PacifiCorp will fund and/or conduct environmental analysis, compliance, and permitting for recreation resource-related activities, as necessary, subject to the requirements contained in regulations and policies in force at the time individual actions are undertaken. Planned recreation and aesthetic/visual resource activities will also be reviewed for consistency with other related non-Project-related resource management plans and other guidance and watershed analyses, including the following:

- *Wallowa-Whitman National Forest Land and Resource Management Plan* (USDA-FS, 1990)
- *Wallowa County Comprehensive Land Use Plan* (Wallowa County, 2003) and zoning ordinance articles

---

## 4.0 REVISIONS AND UPDATES

This RRMP was prepared in 2013-2014 by PacifiCorp and CH2M HILL in consultation with several interested parties, including the USDA-FS and OPRD. The recreation and aesthetic/visual resource capital improvements are expected to be implemented by PacifiCorp as detailed in the RRMP through the term of the new license. However, flexibility in the RRMP is important to address unanticipated changes in conditions over time.

An annual review process may result in the adjustment of some specific actions or schedules as needed. PacifiCorp and the USDA-FS will jointly agree on any scheduled changes of specific actions during these annual meetings.

In addition, the RRMP will be reviewed and potentially revised by PacifiCorp and the USDA-FS at least every 10 years after the new license is issued or as agreed upon by PacifiCorp and the USDA-FS. This review will occur in conjunction with the annual meetings. Either PacifiCorp or USDA-FS can submit recommendations for changes to the RRMP, and all submittals will be discussed. PacifiCorp will incorporate any agreed-upon changes to the RRMP into a revised RRMP. PacifiCorp and the USDA-FS will review and approve the revised RRMP, and it will then be submitted to the FERC for final review and approval. Any disagreements on RRMP revisions will be adjudicated by FERC.

The following factors may trigger a revision of the RRMP:

- Revisions and updates to the *Wallowa-Whitman National Forest Land and Resource Management Plan* (a revised plan that will include the WWNF and two other nearby national forests is currently being developed by the USDA-FS under the *Blue Mountains Forest Plan Revision*. A date has not been set for public review and comments as of the time of this license application.
- Catastrophic natural events, such as major forest fires or natural disasters, and significant effects of social disorder.
- New federal and state policies, regulations, and laws that significantly affect recreation resources near the Project for the new license term.

Revisions to the RRMP will require approval by both PacifiCorp and the USDA-FS, with written changes documented in a revised RRMP as appropriate. The overall cost to PacifiCorp that is identified in Appendix A will not be modified as a result of any changes to the RRMP, unless mutually agreed upon by the participating parties.

---

## 5.0 WORKS CITED

PacificCorp. 2013a. Updated Study Report (*Final Technical Report*) for *Recreation Resources*. Available at <http://www.pacificcorp.com/wallowafalls#>

PacificCorp. 2013b. Updated Study Report (*Final Technical Report*) for *Aesthetic and Visual Resources*. Available at <http://www.pacificcorp.com/wallowafalls#>

United States Access Board. 2002. *ADA Accessibility Guidelines for Buildings and Facilities*.

United States Department of Agriculture - First Service (USDA-FS). 1990. *Wallowa-Whitman National Forest Land and Resource Management Plan*.

Wallowa County Planning Department. 2003. *Wallowa County Comprehensive Plan* and *Zoning Ordinance Articles*. On the web at:  
[http://www.co.wallowa.or.us/community\\_development/land\\_use\\_planning/index.html](http://www.co.wallowa.or.us/community_development/land_use_planning/index.html)

---

## **Exhibit A: Capital Improvements**



**RRMP Table A-1: Capital Improvements Summary**

Action	Responsible Party	Planning Year	Implementation Year	Notes
				Permitting for the construction of the Project tailrace reroute will occur during Year-1 of the new license. Final engineering for the rerouting of the Project tailrace will occur during Year-2 of the new license, and construction will occur during Year-3. The new tailrace construction and the short work season will result in tailrace capital improvements near the Project powerhouse and terminus of the Joseph-Wallowa Lake Highway being constructed during Year-3 of the new license. Therefore, major construction of the recreation improvements is planned for Year-4 of the new license.
<b>Terminus of the Joseph-Wallowa Lake Highway, Project powerhouse area, and trails to WWNF that are located on PacifiCorp land</b>				
1. Replace existing Wallowa Lake Trailhead sign and wilderness registration box.	PacifiCorp	1	4	Design facility in coordination with USDA-FS. and potentially other parties. New trailhead might be relocated and constructed in conjunction with tailrace rerouting.
2. New trail from relocated Wallowa Lake Trailhead to existing trails used to access WWNF.	PacifiCorp	1	4	To be done in conjunction with tailrace rerouting.
3. Replace cable gate near powerhouse with metal pipe gate.	PacifiCorp	1	4	To be done in conjunction with tailrace rerouting.
4. Install 3-panel interpretive signage in the terminus area (cul-de-sac) of Joseph-Wallowa Lake Highway.	PacifiCorp	1	4	Design in coordination with USDA-FS and OPRD Installed after tailrace rerouting.
5. Replace Project fencing at the terminus of the Joseph-Wallowa Lake Highway.	PacifiCorp	1	3	To be done in conjunction with tailrace rerouting.
6. Install low-maintenance landscape improvements at the Project powerhouse and at the edge of the Joseph-Wallowa Lake Highway terminus.	PacifiCorp	1	3	To be done in conjunction with tailrace rerouting.

**RRMP Table A-1: Capital Improvements Summary**

<b>Action</b>	<b>Responsible Party</b>	<b>Planning Year</b>	<b>Implementation Year</b>	<b>Notes</b>
7. Recoat Project powerhouse exterior with compatible color that is less contrasting than current color.	PacifiCorp	NA	5/10	Roof will be recoated in Year 5 (a one-time maintenance action during the license), and the color of the siding will be changed in year 10 (a one-time maintenance action during the license) when the siding is either replaced or recoated.
8. Provide new trail signs near portion of forebay access road and WWNF connector trails.	PacifiCorp	1	3	Design signs in coordination with USDA-FS.
<b>Portion of the Project within the WWNF</b>				
1. Improve the laydown and storage area on east side of forebay.	PacifiCorp	1	2	
2. Improve drainage along the connector trail between the forebay access road and the East Fork Wallowa River Trail.	PacifiCorp	1	2	
3. Improve forebay intake structure by installing wood shake siding and roofing.	PacifiCorp	1	2	
4. Enhance the upper penstock trestle and penstock pipe by coating a uniform dark color.	PacifiCorp	1	2	
5. Install interpretive sign at the west side of forebay.	PacifiCorp	1	2	
<b>Pacific Park Campground</b>				
1. Provide new entry sign.	PacifiCorp	1	4	Installed after tailrace rerouting.
2. Provide campground host site.	PacifiCorp	1	4	Installed after tailrace rerouting.
3. Provide ADA-compliant two-room restroom facility with flush toilets.	PacifiCorp	1	4	Installed after tailrace rerouting.
4. Improve campsite identification signage.	PacifiCorp	1	4	Installed after tailrace rerouting.
5. Restore campsite pads in campground..	PacifiCorp	1	4	Installed after tailrace rerouting.

**RRMP Table A-1: Capital Improvements Summary**

<b>Action</b>	<b>Responsible Party</b>	<b>Planning Year</b>	<b>Implementation Year</b>	<b>Notes</b>
6. Remove logs and stumps.	PacifiCorp	1	4	Installed after tailrace rerouting.
<b>Ridge to west of Pacific Park Campground</b>				
1. Install a one-panel informational trailhead sign per PacifiCorp standards and a wilderness registration station per USDA-FS standards at bottom of trail from campground to top of ridge to west.	PacifiCorp		4	Design in coordination with USDA-FS within first year of license. Installed after tailrace rerouting.
2. New trail from Pacific Park Campground to top of ridge to the west that will connect with the well established user-created trail that connects with the WWNF Chief Joseph Mountain (#1803) and West Fork Wallowa River (#1820) Trails and will reclaim user-created trails on slope in vicinity of new trail and adjacent to campground.	PacifiCorp		2	Design in coordination with USDA-FS. and OPRD within first year of license.

**RRMP: Table A-2: Descriptions of Capital Improvements**

<b>Improvement</b>	<b>Description</b>
<b>Terminus of the Joseph-Wallowa Lake Highway, Project powerhouse area, and trails to WWNF that are located on PacifiCorp land</b>	
1. Replace existing Wallowa Lake Trailhead sign and registration box.	A new trailhead sign and registration box will replace the existing Wallowa Lake trailhead sign and registration box and be similar in design to other signs that will be developed as part of these measures. The new trailhead sign will include the appropriate USDA-FS topical information and maps. A box for registering USDA-FS wilderness permits and collecting fees also will be integrated into the sign. <b>The trailhead sign will be designed and its location selected in coordination with the USDA-FS. The new trailhead might be relocated and constructed in conjunction with tailrace rerouting.</b>
2. New trail from relocated Wallowa Lake Trailhead to existing trails used to access WWNF.	The new trail will connect the relocated trailhead to the access trails/forebay access road that are used to access the East Fork Wallowa and West Fork Wallowa trails that provide access into the WWNF.
3. Replace cable gate near powerhouse with metal pipe gate.	The existing cable gate that prevents vehicles from the Joseph-Wallowa Lake Highway terminus from driving onto forebay access road will be replaced with a metal pipe gate (which will be safer/easier to see than the existing cable gate and more effective at preventing vehicle access).
4. Install 3-panel interpretive signage in the terminus area (cul-de-sac) of Joseph-Wallowa Lake Highway.	A three-panel informational kiosk meeting FERC Part-8 requirements will be installed at the end of the Joseph-Wallowa Lake Highway informing the public on topics such as the history of the Project, its components and operation, historical use of the area, and nearby available recreation opportunities. The sign content will be developed with input from stakeholders.
5. Replace Project fencing at the terminus of the Joseph Wallowa Lake Highway.	Remove all existing 2-inch mesh galvanized chain-link fencing around the Project powerhouse and fenced-in yard with 2-inch mesh black vinyl-coated chain-link fencing.
6. Install low-maintenance landscape improvements at the Project powerhouse and at the edge of the Joseph-Wallowa Lake Highway terminus.	Low-maintenance landscape improvements for approximately 25,000 square feet (native vegetation, boulders, rock, cobble, and/or gravel) will be installed at the northern edge of the portion of the Project powerhouse yard adjacent to the edge of the Joseph-Wallowa Lake Highway terminus. The intent of the landscaping will be to screen views of the Project powerhouse and fenced-in yard, and make the area more attractive. Additionally, the landscape improvements will serve as a backdrop to the interpretive signs that are described in Section 2.2.3.
7. Recoat powerhouse exterior with compatible color that is less contrasting than current color.	The light-colored powerhouse roof, will be recoated with a more appropriate color (i.e., darker and nonreflective) in Year 5 after the license is issued. The color of the powerhouse siding will be changed to a dark green color similar to that of trees behind when the siding requires recoating or replacing (no later than year 10 of the new license).

**RRMP: Table A-2: Descriptions of Capital Improvements**

<b>Improvement</b>	<b>Description</b>
8. Provide new trail signs near portion of forebay access road and WWNF connector trails.	New, more legible directional signage along portion of the forebay access road on PacifiCorp land and connector trails to WWNF trails. Also includes sign on forebay access road near waterfall and lower penstock trestle. Will be designed in consultation with the USDA-FS.
<b>Portion of the Project within the WWNF</b>	
1. Improve the laydown and storage area on east side of forebay.	Much of the current stored material in this area will be removed and the rest consolidated behind the existing storage structure.
2. Improve drainage along the connector trail between the forebay access road and the East Fork Wallowa River Trail.	A turnpike drainage structure will be constructed per USDA-FS standards for an area between the bridge that crosses the Project tailrace and the forebay access road to address the current drainage situation that results in the trail becoming muddy for much of the summer.
3. Improve forebay intake structure by installing wood shake siding and roofing.	Wood shakes will be attached to the intake structure-equipment house's exterior and roof (which are currently plywood) to make the structure similar in appearance to the storage structure that can be seen on the east side of the forebay.
4. Enhance the upper penstock trestle and penstock pipe by coating a uniform dark color.	The upper penstock trestle and penstock will be painted or coated with a uniform dark color that will be selected in consultation with the USDA-FS. The trestle concrete support structures will be stained a darker gray similar to the color of nearby rocks. Nearby rocks will be gathered and placed on top of, and adjacent to, the portions of the support structures that are visible from East Fork Wallowa Trail (# 1804) to better blend the support structures into the adjacent landscape.
5. Install interpretive sign at the west side of forebay.	An interpretive sign will be installed along the East Fork Wallowa Trail (#1804) near the forebay that will describe the Project, include a map of the local trail system and potentially, information related to the Eagle Cap Wilderness.
<b>Pacific Park Campground</b>	
1. Provide a new entry sign.	Install a new entry sign at Pacific Park Campground. The existing sign near the entrance to the campground is not easy to find and/or see, and information on it can be difficult to understand. The existing sign will be replaced with a new sign designed to meet PacifiCorp standards, meet the FERC Part 8 signage requirements, and inform the public of the campsite reservation system. Note that signs designed with PacifiCorp standards have been installed at other PacifiCorp projects located on National Forests and have been approved by the National Forests in which they are located.

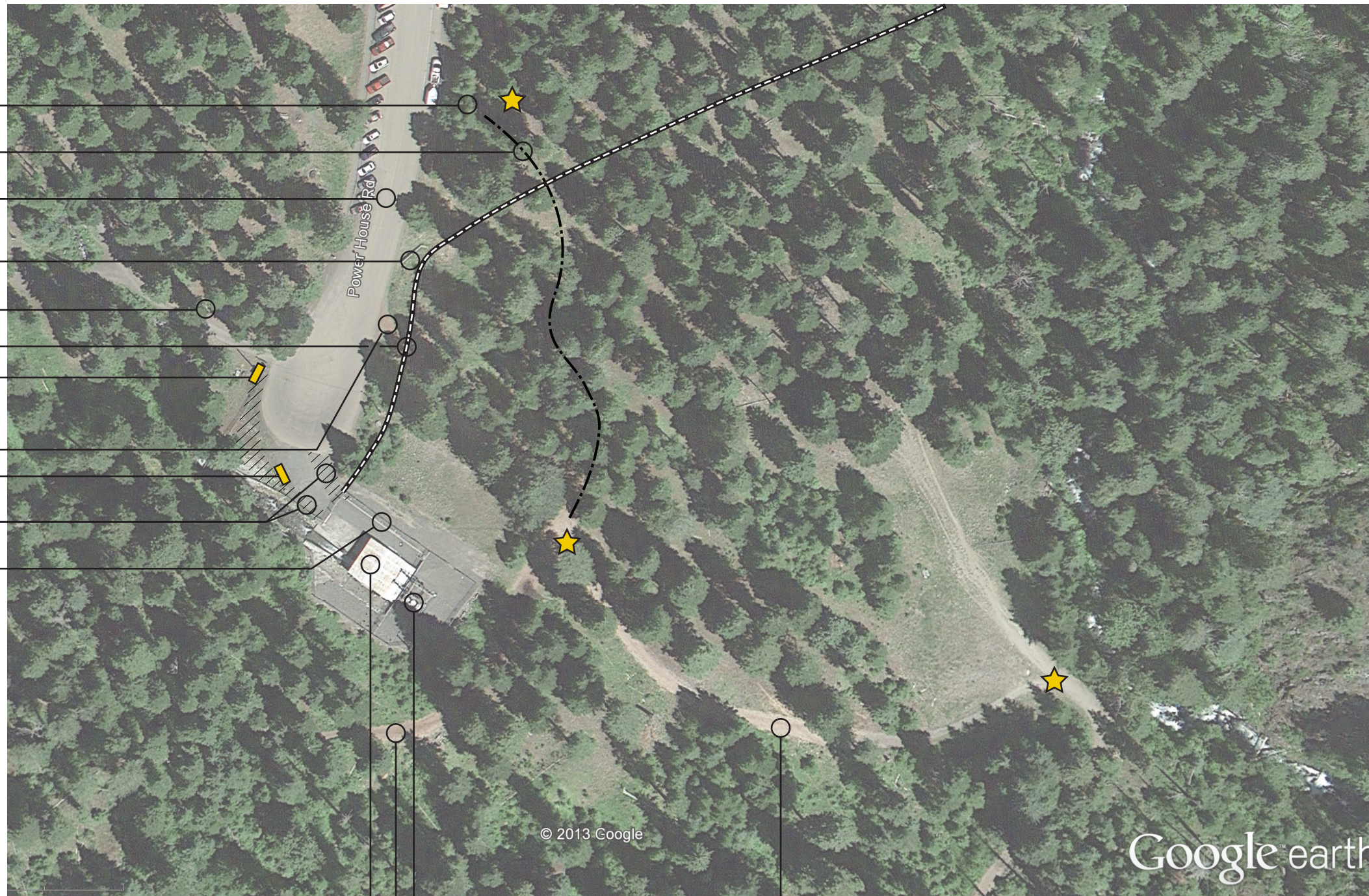
**RRMP: Table A-2: Descriptions of Capital Improvements**

<b>Improvement</b>	<b>Description</b>
2. Provide campground host site.	Construct a campground host area at Pacific Park Campground. A campground host facility will be located near the campground's entrance where there is currently a storage shed. A 10-foot by 30-foot (3 by 9.1 m) compacted gravel pad for a trailer or RV will be built and connections for electricity, water, and sewage hookup to appropriate county building codes installed.
3. Provide ADA-compliant two-room restroom facility with flush toilets.	The existing two vault toilets at Pacific Park will be removed and replaced with a two room restroom facility that will have a flush toilet and electrical hookup. The facility will be similar in size and finish to two room toilets used at Wallowa Lake State Park.
4. Improve campsite identification signage.	Improve campsite identification signage. To make finding campsites posts/signs with campsite numbers will be placed at the entry to each campsite to indicate the campsite number.
5. Restore campsite pads.	Upgrade-restore tent/vehicle pads at Pacific Park Campground. Restore camping pads that have eroded with new compacted gravel and wood ties where necessary.
6. Remove logs and stumps in campground	Logs and stumps located in inappropriate areas throughout the campground will be relocated or removed.
<b>Ridge to west of Pacific Park Campground</b>	
1. Install a one panel informational trailhead sign per PacifiCorp standards and a wilderness registration station per USDA-FS standards at bottom of trail from campground to top of ridge to west.	A one panel informational sign with a USDA-FS wilderness registration station meeting PacifiCorp and USFS sign standards will be located at the beginning of the new access trail from the campground to the top of the ridge. The sign will include a map to depict trails on the ridge and their connection to other trails in the area (including Chief Joseph Mountain (#1803) and West Fork Wallowa River (#1820) Trails.
2. New trail from Pacific Park Campground to top of ridge to the west that will connect with user created trails that connect with the WWNF Chief Joseph Mountain (#1803) and West Fork Wallowa River (#1820) Trails and reclaim user-created trails on slope.	Construct a new access trail to the ridge west of Pacific Park Campground. The maze of user-created trails on the slope west of Pacific Park Campground is confusing and damages vegetation along the slope. A new, formalized access trail that will follow (with some adaptation) the "main" existing user-created trail will begin just south of Pacific Park Campground and provide access to the ridge. Once on the ridge, the main trail will be connected with existing user-created trails that will provide access to the WWNF East Fork (#1804) and Chief Joseph Mountain (#1803) trails.



Attachment A-1  
**Capital Improvements  
 Near Terminus of  
 Joseph-Wallowa Lake  
 Highway**  
*Wallowa Falls Hydroelectric Project*

- Potential New Location for Wallowa Lake Trailhead
- Trail from New Trailhead to Access Trails/Forebay Road
- Joseph-Wallowa Lake Highway
- Proposed Tailrace Reroute – Buried Pipeline
- Pacific Park Campground
- Replace Cable Gate with Pipe Gate
- New Pacific Park Campground Sign
- Existing Wallowa Lake Trailhead Sign to be Rebuilt and Relocated Farther North
- New Interpretive Sign
- New Landscape Treatment
- Replace Project Fencing



Modified by CH2M HILL.

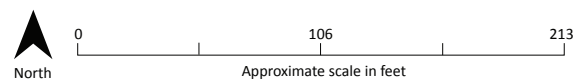
Project Substation

Access Trail to West Fork Wallowa Trail (#1820)

Project Powerhouse

Forebay Access Road/Access Trail to East Fork Wallowa Trail (#1804)

★ Potential Locations for New Signs (there will be directional signs along access trails and the Forebay Access Road)





Attachment A-2  
**Capital Improvements  
 within Wallowa-Whitman  
 National Forest in Vicinity  
 of Project Dam and Forebay**  
*Wallowa Falls Hydroelectric Project*

Project Forebay  
Access Road

Connector Trail to  
Forebay Access Road

Approximate Location  
of New Turnpike  
Drainage Structure

East Fork Wallowa River/  
Project Bypass Reach

Bridge

East Fork Wallowa Trail  
(#1804)

Project Laydown/  
Storage Area

Forebay

Forebay Intake  
Structure

Dam and Spillway Catwalk

Approximate Location  
of Interpretive Sign

East Fork Wallowa  
Trail (#1804)

© 2013 Google

Modified by CH2M HILL.

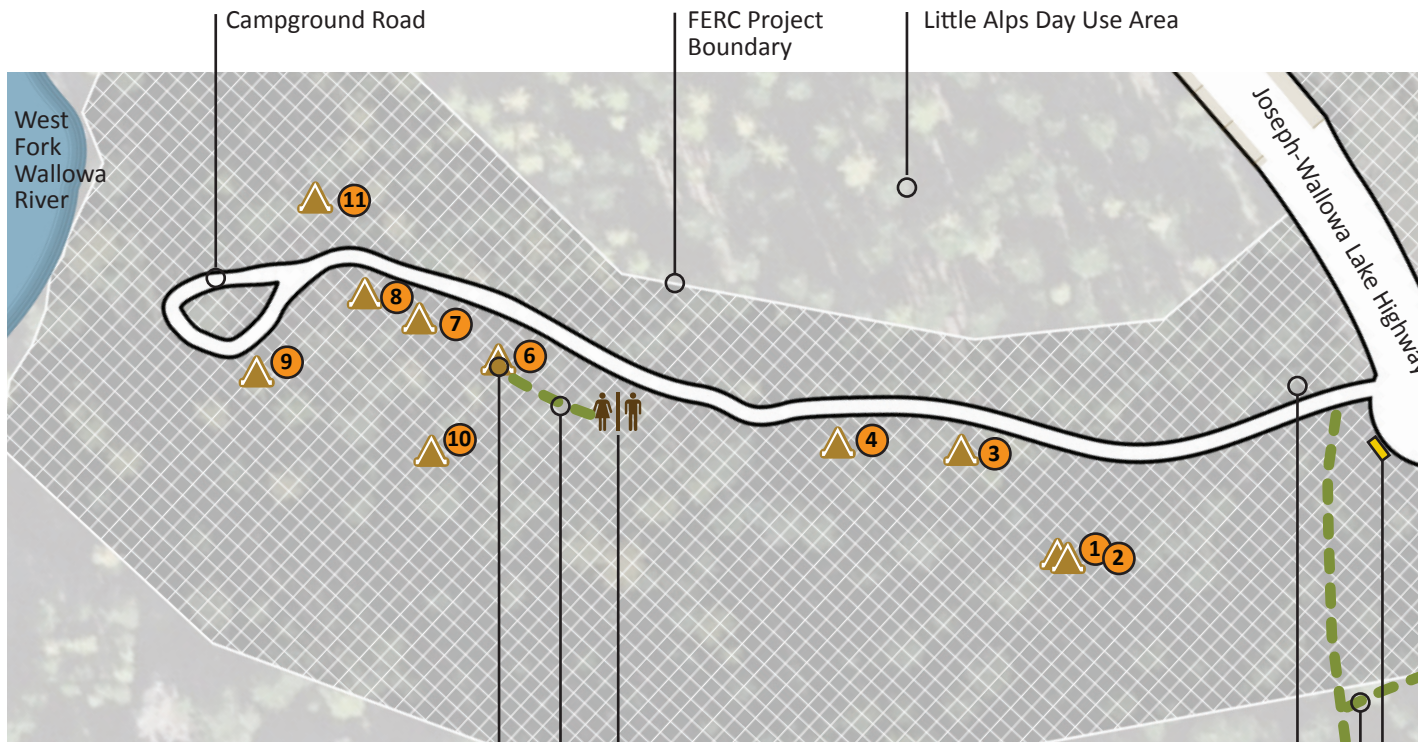
Google™ earth



0 120 240  
 Approximate scale in feet







Attachment A-3  
**Capital Improvements  
 at Pacific Park  
 Campground**  
*Wallowa Falls Hydroelectric Project*

- Campsite and Number (Approximate Locations)
- Restroom
- Trail
- Proposed FERC Project Boundary (Approximate Location)

Note: There currently is no Campsite 5.

ADA  
Accessible  
Site

New Restroom Facility  
(Flush Toilets, ADA Accessible)

ADA Accessible  
Trail to Restroom  
Facility

New Entry  
Sign

New Trailhead  
Sign

New Campground  
Host Site



**Attachment A-4**  
**Photographs of Pacific Park Campground**

---



## Campsites 1 and 2



## Campsite 3





## Campsite 4



## Campsite 6: ADA Accessible (Note that there is no Campsite 5)





## Campsite 7



## Campsite 8





## Campsite 9



## Campsite 10



## Campsite 11





## Campground Entrance



*Existing entrance to campground, chain-link fencing adjacent to tailrace, campground sign, and storage shed. Note that the chain-link fencing will be removed, a new campground sign will replace the old sign, and the caretaker campsite will be located approximately where the storage shed is currently is located.*



## Existing Vault Toilets to Be Removed



---

## **Exhibit B: Maintenance Responsibilities**

## RRMP: EXHIBIT B: Maintenance Responsibilities

Improvements	Responsible Party	Funding Responsibility	Notes
<b>Terminus of Joseph-Wallowa Lake Highway, Project powerhouse area, and trails to WWNF that are located on PacifiCorp land</b>			
1. Replace existing Wallowa Lake Trailhead sign and registration box.	PacifiCorp	PacifiCorp	
2. New trail from relocated Wallowa Lake Trailhead to existing trails used to access WWNF.	PacifiCorp	PacifiCorp	
3. Replace cable gate near powerhouse with metal pipe gate.	PacifiCorp	PacifiCorp	
4. Install 3-panel interpretive signage in the terminus area (cul-de-sac) of Joseph-Wallowa Lake Highway.	PacifiCorp	PacifiCorp	
5. Replace Project fencing at the terminus of the Joseph Wallowa Lake Highway.	PacifiCorp	PacifiCorp	
6. Install low-maintenance landscape improvements at the Project powerhouse and at the edge of the Joseph-Wallowa Lake Highway terminus.	PacifiCorp	PacifiCorp	
7. Recoat powerhouse exterior with compatible color that is less contrasting than current color.	PacifiCorp	PacifiCorp	
8. Provide new trail signs near portion of forebay access road and WWNF connector trails.	PacifiCorp	PacifiCorp	
<b>Portion of the Project within the WWNF</b>			
1. Improve the laydown and storage area on east side of forebay.	PacifiCorp	PacifiCorp	
2. Improve drainage along the connector trail between the forebay access road and the East Fork Wallowa River Trail.	PacifiCorp	PacifiCorp	
3. Improve forebay intake structure by installing wood shake siding and roofing.	PacifiCorp	PacifiCorp	
4. Install interpretive sign at the	PacifiCorp	PacifiCorp	

## RRMP: EXHIBIT B: Maintenance Responsibilities

Improvements	Responsible Party	Funding Responsibility	Notes
west side of forebay.			
5. Improve the laydown and storage area on east side of forebay.	PacifiCorp	PacifiCorp	
<b>Pacific Park Campground</b>			
1. Provide new entry sign	PacifiCorp	PacifiCorp	
2. Provide campground host site	PacifiCorp	PacifiCorp	
3. Provide ADA-compliant two-room restroom facility with flush toilets.	PacifiCorp	PacifiCorp	
4. Improve campsite identification signage improvements	PacifiCorp	PacifiCorp	
5. Restore campsite pads.	PacifiCorp	PacifiCorp	
6. Remove logs and stumps in campground.	PacifiCorp	PacifiCorp	
<b>Ridge to West of Pacific Park Campground</b>			
1. Install a one-panel informational trailhead sign per PacifiCorp standards and a wilderness registration station per USDA-FS standards at bottom of trail from campground to top of ridge to west.	PacifiCorp	PacifiCorp	USDA-FS will collect wilderness registration forms
2. New trail from Pacific Park Campground to top of ridge to the west that will connect with user created trails that connect with the WWNF Chief Joseph Mountain (#1803) and West Fork Wallowa River (#1820) Trails and reclaim user-created trails on slope.	5.1 PacifiCorp	PacifiCorp	

---

## **Exhibit C: FERC Form-80**

Schedule 1. General Information													
1. Licensee Name:	PACIFICORP	8. Reservoir Surface Area at Normal Pool (acres):	1.00										
2. Project Name:	WALLOWA FALLS	9. Shoreline Miles at Normal Pool:	0.10										
3. Project Number:	308	10. Percent of Shoreline Safely Accessible to the General Public by Land Travel without Trespassing:	0.10										
4. Development Name:	WALLOWA FALLS DIVERSION	Site Number	003080101										
5. State 1: 6. State 2: 7. Type of Project License	OR  Minor	11. Data Collection Methods	<table border="1"> <tr> <td>0.00</td> <td>traffic count/trail count</td> </tr> <tr> <td>90.00</td> <td>attendance records</td> </tr> <tr> <td>5.00</td> <td>staff observation</td> </tr> <tr> <td>0.00</td> <td>visitor assessment</td> </tr> <tr> <td>5.00</td> <td>estimate</td> </tr> </table>	0.00	traffic count/trail count	90.00	attendance records	5.00	staff observation	0.00	visitor assessment	5.00	estimate
0.00	traffic count/trail count												
90.00	attendance records												
5.00	staff observation												
0.00	visitor assessment												
5.00	estimate												
12. Dollar Values (Construction, Operation and Maintenance Costs)	\$5000.00	12. Dollar Values (Recreation Revenues for Calendar Year)	\$3715.00										
13. Length of Recreation Season Summer: From (MM/DD)	05/01 To 09/30	13. Length of Recreation Season Winter: From (MM/DD)	10/01 To 04/30										
14. Number of visits to all recreational areas at development/project (in Recreation Days) (Day Time)	0	14. Number of visits to all recreational areas at development/project (in Recreation Days) (Peak Weekend Average)	0										
15. Number of visits to all recreational areas at development/project (in Recreation Days) (Nighttime)	541	15. Number of visits to all recreational areas at development/project (in Recreation Days) (Nighttime)	60										
Legal Name	David Moore	Title	Environmental Analyst										
Area Code/Phone No	5038136945	Signature	David Moore										
Date Signed	03/23/2009	Report Year Ending	2008										

---

**Schedule 2. Inventory of Recreational Resources**

Recreational Resource Type (a)	User Free(b)	User Fee(c)	No. FERC Approved Resources (d)	Total Miles/Acres(e)	Facility Capacity (percent) (f)
Access Areas	0	0	0	N/A	0.00
Boat Launch Areas.	0	0	0	N/A	0.00
Boat Launch Lanes.	0	0	0	N/A	0.00
Marinas	0	0	0	Acres 0.00	0.00
White Water Boating	0	0	0	N/A	0.00
Canoe Portages.	0	0	0	Miles 0.00	0.00
Tail Water Fishing	0	0	0	N/A	0.00
Fishing Piers	0	0	0	N/A	0.00
Parks	0	0	0	Acres 0.00	0.00
Playground Areas	0	0	0	Acres 0.00	0.00
Trails	0	0	0	Miles 0.00	0.00
Swimming Areas	0	0	0	Acres 0.00	0.00
Picnic Areas	0	0	0	Acres 0.00	0.00
Wildlife Areas	0	0	0	Acres 0.00	0.00
Visitor Center	0	0	0	N/A	0.00
Interpretive Displays	0	0	0	N/A	0.00
Overlooks	0	0	0	Acres 0.00	0.00
Hunting Areas	0	0	0	Acres 0.00	0.00
Golf Courses	0	0	0	Acres 0.00	0.00
Cottage/Cabin sites	0	0	0	N/A	0.00
Camping Areas	0	1	1	Acres 3.00	75.00
Tent/Trailer/RV Sites	0	11	11	Acres 3.00	75.00
Organizational Camps	0	0	0	Acres 0.00	0.00
Group Camps	0	0	0	Acres 0.00	0.00
Winter Sports	0	0	0	N/A	0.00
Other	0	0	0	N/A	0.00