

# **Recreation and Aesthetic/Visual Resource Management Plan**

## **Wallowa Falls Hydroelectric Project FERC Project No. P-308**



*825 NE Multnomah St., 1500LCT  
Portland, Oregon 97232*

March 2018

---

## TABLE OF CONTENTS

Section	Page
ACRONYMS and ABBREVIATIONS .....	V
1.0 INTRODUCTION .....	1
1.1 Purpose and Intent.....	1
1.2 Goals .....	2
2.0 PLAN IMPLEMENTATION .....	5
2.1 Recreation and Aesthetic/Visual Resource Capital Improvements .....	5
2.1.1 Capital Improvement Responsibilities .....	5
2.1.2 Recreation and Aesthetic/Visual Resource Capital Improvement Descriptions .....	5
2.1.3 Capital Improvement Implementation Schedule .....	5
2.2 Recreation Facility Operation and Maintenance.....	6
2.2.1 Description of Operation and Maintenance Responsibilities.....	6
2.2.2 Annual Operation and Maintenance Cost Sharing and Fund Leveraging ...	6
2.2.3 Annual Operations and Maintenance Schedule .....	6
2.2.4 Recreational Use and Maintenance of Project-Related Roads .....	6
2.3 Recreation Monitoring, Reporting, and Public Information .....	6
2.3.1 Recreation Monitoring .....	6
2.3.2 Recreation Reporting .....	7
2.3.3 Recreation Public Information .....	7
3.0 PLANNING AND COORDINATION .....	9
3.1 Agency and PacifiCorp Responsibilities .....	9
3.2 Annual Recreation and Aesthetic/Visual Resources Review Meeting .....	10
3.3 Environmental Compliance, Approvals, and Permitting .....	11
4.0 REVISIONS AND UPDATES .....	12
5.0 WORKS CITED .....	13

### Exhibits

#### Exhibit A: Capital Improvements

Table A-1: Capital Improvements Summary

Table A-2: Descriptions of Capital Improvements

Figure A-1: Capital Improvements near Terminus of Joseph-Wallowa Lake Highway

Figure A-2: Capital Improvements within Wallowa-Whitman National Forest in  
Vicinity of Project Dam and Forebay

#### Exhibit B: Operations and Maintenance Responsibilities

#### Exhibit C: FERC Form 80

#### Exhibit D: Stakeholder Comments and Response matrix

---

## Acronyms and Abbreviations

FERC	Federal Energy Regulatory Commission
Forest Plan	Wallowa-Whitman National Forest Land and Resource Management Plan
Ha	Hectare
I&E	interpretation and education
NEPA	National Environmental Policy Act
OPRD	Oregon Parks and Recreation Department
O&M	operations and maintenance
Project	Wallowa Falls Hydroelectric Project
RRMP	Recreation and Aesthetic/Visual Resource Management Plan
USDA-FS	United States Department of Agriculture, Forest Service
WWNF	Wallowa-Whitman National Forest

---

## 1.0 INTRODUCTION

On February 28, 2014, PacifiCorp filed an application for subsequent (new) minor license for the Wallowa Falls Hydroelectric Project (Project), Federal Energy Regulatory Commission (FERC) Project No. 308, on the East Fork Wallowa River, West Fork Wallowa River, and Royal Purple Creek in Wallowa County, Oregon. On January 5, 2017 the FERC issued a new 40-year license for the Project. The Project has a generation capacity of 1,100 kilowatts and produces an average of 7 million kilowatt hours annually. The Project boundary under the new license currently occupies a total of 26.4 acres (10.7 ha), 13.3 acres (5.4 ha) of private land owned by PacifiCorp, 0.4 acres (0.2 ha) of state land managed by the Oregon Parks and Recreation Department (OPRD), and 12.7 acres (5.1 ha) of federal land managed by the Wallowa-Whitman National Forest (WWNF).

Recognizing that Project facilities have induced public recreation needs at the Project, PacifiCorp, after consultation with the FERC, US Department of Agriculture, Forest Service (USDA-FS), OPRD, Wallowa County, and other interested parties, will provide appropriate resources towards existing and future recreation needs within the requirements of a FERC licensee. PacifiCorp acknowledges that Project facilities influence the aesthetic and visual character and quality of locations near the Project, which can influence the experiences of recreationists and other viewers. Because part of the Project is located within the WWNF and because trails providing public access to parts of the WWNF pass through PacifiCorp land (both within and outside of the FERC Project boundary), the USDA-FS also shares responsibility for managing some recreation resources. PacifiCorp has prepared this Final Recreation and Aesthetic Resource Management Plan (RRMP) per Article 416 of the new FERC license. This RRMP has been prepared to implement PacifiCorp's protection, mitigation, and enhancement measures related to the recreation and aesthetic/visual resources that were developed to address the effects of the continued operation of the Project on the existing area resources as required by Code of Federal Regulations Title 18, Section 5.16, and in accordance with License Article 416 and USDA-FS 4(e) Condition 7.

In consideration of recreation needs in the local area independent of FERC license requirements for the Project, PacifiCorp welcomes additional discussion of recreation resource opportunities (including the ongoing operation and maintenance of Pacific Park Campground) with the USDA-FS, OPRD and other interested parties independent of this license required RRMP.

### 1.1 Purpose and Intent

The purpose of this RRMP is to effectively guide the development and management of existing and future Project recreation and aesthetic/visual resources as required by the FERC license. This RRMP establishes goals for managing license required recreation and aesthetic/visual resources, identifies measures for enhancing existing Project-related recreation and aesthetic/visual resources, describes improvements to existing and new facilities, and, identifies programs developed to implement the measures and facility improvements or construction.

---

This RRMP is an implementation tool to be used to guide, design, construct, renovate, monitor, fund, operate, and maintain existing and future public recreation facilities and programs within the FERC Project boundary and improve the condition of aesthetic/visual resources. Facilities identified in the RRMP will be used throughout the term of the new license.

Based on the results of the recreation and aesthetic/visual resource studies that were conducted as part of relicensing as well as input from the FERC and stakeholders during the licensing process, PacifiCorp will implement a number of recreation and aesthetic/visual resource measures. To assist with implementing these measures, this RRMP defines and describes recreation and aesthetic/visual resource facility capital improvements, facility operations and maintenance (O&M), funding, *Wallowa-Whitman National Forest Land and Resource Management Plan* (USDA-FS, 1990) compliance, monitoring, public information, and reporting.

This RRMP is a culmination of a process that began with development and agency approval of the scopes of the recreation and aesthetic/visual resource studies for relicensing in 2010, implementation of studies between 2011 and 2012, presentation of study results to stakeholders in 2012 and 2013, review of the RRMP and license application by the FERC, and culminated with the issuance of the new license by the FERC in January, 2017. CH2M HILL conducted the studies for PacifiCorp, and the studies' findings are detailed in the *Updated Study (Final Technical) Report for Recreation Resources* (PacifiCorp, 2013a) and the *Updated Study (Final Technical) Report for Aesthetic and Visual Resources* (PacifiCorp, 2013b) that were filed with the FERC in January 2014. In addition, several Project meetings and follow-up conference calls were held with USDA-FS and OPRD staff to explore potential measures and review proposed measures developed by the group.

## 1.2 Goals

To meet the RRMP purpose and intent, PacifiCorp, as part of the licensing process, developed goals and objectives that guide existing and future recreation planning and design activities to comply with the Project license, as well as also guide overall decision-making during the term of the new license. The goals and their respective objectives for Project-related recreation and aesthetic/visual resources are listed below.

**Goal 1:** Protect, enhance, and maintain public recreation resources.

- Objective 1a: Provide and operate recreation facilities required by License Article 416 and USDA-FS 4(e) Condition 7 of the new license.
- Objective 1b: Provide new and additional signage along trails that pass through Project land to make way-finding easier for the public, and provide interpretive facilities to provide information and enhance recreational experiences.
- Objective 1c: Protect areas that have been damaged by unauthorized recreational use.

---

**Goal 2:** Provide for existing and future public recreation needs.

- Objective 2a: Consider existing Project recreation facility conditions and use, as well as input from stakeholders, regarding providing and/or supporting recreation facilities on PacifiCorp Project land or trails passing through Project land.
- Objective 2b: Upgrade recreation facilities as described in License Article 416 and USDA-FS 4(e) Condition 7 of the new license.
- Objective 2c: Reflect anticipated future recreation needs identified in relevant comprehensive plans when upgrading existing recreation facilities.

**Goal 3:** Recreation planning will comply with federal resource management plans.

- Objective 3a: Provide recreation opportunities that are consistent with existing adopted agreements, plans, and policies including the *Wallowa-Whitman National Forest Land and Resource Management Plan* (USDA-FS, 1990).
- Objective 3b: As new management plans are created or existing management plans amended or changed, discuss with relevant stakeholders the consistency of Project recreation facilities with the plans and consider ways to make Project facilities consistent or more consistent.

**Goal 4:** Provide cost-effective recreation facilities.

- Objective 4a: Provide public recreation facilities and access that are compatible with Project O&M and USDA-FS resource management objectives.
- Objective 4b: Provide public recreation facilities that will consider minimizing capital expenditures and long-term O&M costs.

**Goal 5:** Help Project facilities better integrate into the viewed landscape.

- Objective 5a: Where Project facilities are located within the WWNF, improve their appearance to a reasonable degree and provide interpretive information that better explain the Project's history and operation.
- Objective 5b: Improve the Project appearance near the Project powerhouse.

**Goal 6:** Provide recreation resources that are compatible with other resources and environmental regulations.

- Objective 6a: Provide public recreation facilities and activities that meet environmental regulations, such as the *Wallowa-Whitman National Forest Land and Resource Management Plan* (USDA-FS, 1990), Endangered Species Act, and National Environmental Policy Act (NEPA), as amended.

- 
- Objective 6b: Provide public recreation facilities and activities that are compatible with other Project resources, including cultural, terrestrial, aesthetic, and aquatic resources.
  - Objective 6c: Provide environmental education opportunities—such as interpretive signs, and trails—that interpret the area’s natural, historical, and cultural resources.

---

## 2.0 PLAN IMPLEMENTATION

To meet this RRMP's goals and objectives, three implementation elements are described below in Sections 2.1 to 2.3.

### 2.1 Recreation and Aesthetic/Visual Resource Capital Improvements

PacifiCorp will implement the recreation and aesthetic/visual resource capital improvement measures identified in Exhibit A: Capital Improvements. These actions are intended to help meet existing and future Project related recreational needs by enhancing existing recreation facilities, constructing new facilities, and improving the condition of aesthetic/visual resources of the Project. The capital improvement program identifies funding and construction responsibilities, provides a construction schedule, and describes recreation and aesthetic/visual resource enhancements and developments. These elements are described below.

#### 2.1.1 Capital Improvement Responsibilities

PacifiCorp will complete the recreation and aesthetic/visual resource capital improvement activities presented in Exhibit A (see Table A-1). PacifiCorp will design and construct the capital improvement activities as described in Exhibit A, and obtain any required Wallowa County permits where appropriate. The FERC license (and the NEPA process associated with it) satisfied all NEPA requirements for activities that will occur within the WWNF under this plan.

#### 2.1.2 Recreation and Aesthetic/Visual Resource Capital Improvement Descriptions

Recreation and aesthetic/visual resource facility enhancements and new facility developments have been identified to help satisfy existing and future Project recreation needs at the Project. Table A-2 describes each enhancement and improvement, while Figures A-1 and A-2 are maps showing the planned locations of enhancements and developments. The descriptions in Table A-2 provide conceptual design guidance only for the enhancement and development projects. Additional detailed design work will be completed prior to constructing each project. Further refined conceptual plans may be required at the time that the projects are initiated. PacifiCorp will prepare construction documents necessary for submittal to the appropriate agencies for review and approval before actual construction. It is anticipated that PacifiCorp will manage and/or perform most if not all construction-related capital improvement projects. However, if agreeable to both PacifiCorp and the USDA-FS, it may be cost effective for the USDA-FS to construct or install some measures.

#### 2.1.3 Capital Improvement Implementation Schedule

Exhibit A-1, Table A-1 presents anticipated facility capital improvement timeframes. These timeframes will be discussed and revised as needed during the annual recreation and aesthetic/visual resource meetings. PacifiCorp will work with stakeholders to assist in timely construction and enhancement processing. During annual meetings, Project phases



---

or responsibilities might be adjusted, or reassigned to other parties, as long as affected parties mutually agree in advance.

## 2.2 Recreation Facility Operation and Maintenance

### 2.2.1 Description of Operation and Maintenance Responsibilities

This activity defines recreation and aesthetic/visual resource facility maintenance standards with program features further detailed below. Existing and future facility O&M is a required element of recreation and aesthetic/visual resource management plans. As defined in Exhibit B: Operations and Maintenance Responsibilities, PacifiCorp will fund annual O&M of license required facilities that are located within the Project boundary.

### 2.2.2 Annual Operation and Maintenance Cost Sharing and Fund Leveraging

In the future, PacifiCorp and agencies may engage in annual O&M cost-sharing and fund-leveraging if these will provide added efficiency and cost reduction to the Project. Such activities have not been identified currently, but they could be proposed at the annual recreation and aesthetic/visual resource meeting. If cost-sharing between PacifiCorp and agencies occurs at the Project, then accounting for annual cost-sharing and fund-leveraging will be presented by the participants at the annual meeting.

### 2.2.3 Annual Operations and Maintenance Schedule

Exhibit B presents the schedule for annual O&M activities. During the annual recreation and aesthetic/visual resource meeting, PacifiCorp and agencies involved in O&M activities directly related to the Project will discuss and possibly refine the schedule for annual O&M activities at selected facilities.

### 2.2.4 Recreational Use and Maintenance of Project-Related Roads

The public uses the forebay access road as an alternative to the East Fork Wallowa River Trail to access the WWNF. Much of the forebay access road is located within the WWNF. As defined in Exhibit B, PacifiCorp is responsible for maintaining the portion of the forebay access road located within the WWNF and may, in consultation with the USDA-FS, close public access to the road for maintenance or construction projects.

## 2.3 Recreation Monitoring, Reporting, and Public Information

### 2.3.1 Recreation Monitoring

PacifiCorp will document the conditions of the recreation facilities identified in Exhibit A at the beginning and end of each peak recreation-use season (before Memorial Day and after Labor Day). Findings related to the part of the Project located within the WWNF will be shared with the USDA-FS at the annual recreation aesthetic/visual resources meeting. The USDA-FS will share the annual data it collects from visitors applying for wilderness visitor permits at the Wallowa Lake Trailhead registration box. Current FERC Form 80 rules require use to be reported for non-project recreation facilities located inside the

---

Project boundary. For this reason, If Pacific Park Campground is in the FERC boundary during the next Form 80 data collection year (2020), PacifiCorp will collect visitation data for the campground to determine peak use periods, identify the number of visitors by month, identify campsite usage, and to complete the FERC Form 80 reports (see below).

### 2.3.2 Recreation Reporting

To the extent that PacifiCorp operates the Pacific Park Campground for public use, it will share visitation data and the USDA-FS will share Eagle Cap Wilderness registration data at the annual recreation aesthetic/visual resources meeting. The USDA-FS will provide PacifiCorp with an annual cost report to track USDA-FS O&M activities described in Exhibit B.

PacifiCorp will submit Form 80 Reports to the FERC every 6 years (see Exhibit C: FERC Form 80) to report on recreation use within the Project boundary. PacifiCorp will coordinate with the USDA-FS to include relevant data collected by the USDA-FS from the Wallowa Lake Trailhead registration box in the Form 80 report. As of this writing (2017), PacifiCorp will continue operation of Pacific Park Campground in 2018 and 2020 though it is not a license requirement. The campground will be closed during the 2019 recreation season due to the construction of the tailrace realignment project. Current FERC policy requires reporting of all use within the Project boundary regardless of whether or not a particular facility is a license requirement. The Campground is in the FERC boundary currently but PacifiCorp plans to revise the FERC boundary to exclude the campground and abandoned tailrace channel upon completion of the tailrace realignment project. If Pacific Park Campground is in the FERC boundary during the next Form 80 data collection year (2020), PacifiCorp will include campground use data in the Form 80 report.

### 2.3.3 Recreation Public Information

The goal of sign placement, sign type, and other public information related to recreational facilities at the Project is to provide effective, consistent, economical public information that meets Project purposes and PacifiCorp objectives. For recreational facilities located within the WWNF, or leading to (trails) on the WWNF through PacifiCorp land, the informational materials will need to meet USDA-FS objectives. The informational materials are also intended to present a favorable image to the public. Several facilities and activities identified in Exhibit A are informational in nature and are considered to be interpretation and education (I&E) elements. PacifiCorp and participating parties will coordinate activities related to public information and developing I&E elements. This coordination will include developing I&E themes, using similar sign designs where appropriate, and using consistent messages. Coordination activities will occur at annual recreation aesthetic/visual resources meetings and at other times as needed. I&E element messages and materials planned to be placed at Project-related recreation facilities on PacifiCorp lands will be mutually acceptable to the participating parties.

I&E elements on PacifiCorp land will display the PacifiCorp logo. At least one sign within the FERC Project boundary must include the FERC “Part 8” signage (a FERC requirement). Signs and interpretive materials within the portion of the Project boundary

---

located within the WWNF will have both the PacifiCorp and USDA-FS logos and will be developed with USDA-FS input to meet both PacifiCorp and USDA-FS objectives. PacifiCorp will coordinate with the USDA-FS on the placement of signs and interpretive materials located on WWNF land and on trails located on PacifiCorp land that lead directly to the WWNF.

---

### 3.0 PLANNING AND COORDINATION

An important part of the RRMP over the term of the new license will be ongoing planning and coordination by PacifiCorp, USDA-FS, and OPRD as conditions change over time. Section 3.1 describes the roles and responsibilities of stakeholders and PacifiCorp, annual reviews, and notification to participants of the annual recreation and aesthetic/visual resource meeting. These elements are discussed below.

#### 3.1 Agency and PacifiCorp Responsibilities

PacifiCorp, as licensee, is primarily responsible for implementing the RRMP. However, since part of the Project is located within the WWNF, the USDA-FS also plays an important implementation role. Part of the FERC Project boundary is located within the WWNF, and USDA-FS-managed trails pass through PacifiCorp land via an easement with PacifiCorp that provides access to the WWNF. Below are the basic roles and responsibilities for the entities involved in implementing the RRMP.

##### PacifiCorp Roles:

- Implement the RRMP, including the funding or implementation of specific recreation actions identified in Exhibits A and B.
- Coordinate the annual recreation and aesthetic/visual resource meeting with stakeholders.
- Participate as a member of the annual meeting.
- Implement the recreation and aesthetic/visual resources capital improvement measures, including recreation and aesthetic/visual resource facility design, engineering, and construction.
- Coordinate with other Project-related resource management plans, including the *Wallowa Falls Hydroelectric Project Noxious Weed Management Plan*, *Vegetation Management Plan*, and *Access Road Inspection and Maintenance Plan*.
- Submit the FERC Form 80 reporting to the FERC.
- Conduct periodic (10-year) reviews and potential updates of the RRMP, and track changes.

##### USDA-FS Roles:

- Survey USDA-FS trail easements through PacifiCorp property to determine and verify easement locations, as well as the locations of existing trails (which may not be the same as the easements) used and maintained by the USDA-FS to access the WWNF, and survey and mark the locations of the property boundary between PacifiCorp and the WWNF lands where the trails cross.

- 
- After the survey is complete, develop a management approach regarding connections between the Chief Joseph Mountain (#1803) and West Fork Wallowa River Trail (#1820). It may be appropriate to either realign the trail in the field or revise the easement description to more accurately describe the as-built trail alignment.
  - Operation and maintenance of existing trails that pass through PacifiCorp Project land on USDA-FS easements, including trails on easements that are currently managed by the WWNF and trail realignments or additions that are identified in the survey and trail management activities described above.
  - Construction, as needed, of any new trail(s) that may be identified in the survey and trail management activities described above.
  - Collect and tabulate wilderness permit data from the registration box located at the Wallowa Lake Trailhead that will be constructed as part of the capital improvement program.
  - Participate with PacifiCorp, interested tribes, and other participating parties in the planning of I&E elements and signage that will be developed for the Project.
  - Participate in the annual recreation and aesthetic/visual resource meeting.

#### OPRD Roles:

- Participate with PacifiCorp, interested tribes, and other participating parties in the planning of I&E elements and signage that will be developed for the Project.
- Participate as a member of the annual recreation and aesthetic/visual resource meeting.

### 3.2 Annual Recreation and Aesthetic/Visual Resources Review Meeting

To facilitate efficient coordination and action between the parties, an annual recreation and aesthetic/visual resource meeting will be held before March 1, each year or, if March 1 is not possible, before the end of November. The purpose of this annual meeting will be to accomplish the following:

- For the first several annual meetings, identify progress made in implementing the capital improvement measures described in Exhibit A. Adjust schedule of planned actions for the current and future years as needed.
- Determine progress accounting by reviewing, reconciling, and preparing for approval the previous fiscal year's accomplishments, accrued costs, and cost-sharing accounting. Discuss ongoing funding/cost sharing needs.
- Review recreation operation and maintenance accomplishments from the previous year and discuss plans and needs for the upcoming recreation season.

- 
- Determine policy changes or updates as needed.

### 3.3 Environmental Compliance, Approvals, and Permitting

PacifiCorp will fund and/or conduct environmental analysis, compliance, and permitting for recreation resource-related activities, as necessary, subject to the requirements contained in regulations and policies in force at the time individual actions are undertaken. Planned recreation and aesthetic/visual resource activities will also be reviewed for consistency with other appropriate non-Project-related resource management plans and other guidance and watershed analyses, including the following:

- *Wallowa-Whitman National Forest Land and Resource Management Plan* (USDA-FS, 1990)
- *Wallowa County Comprehensive Land Use Plan* (Wallowa County, 2003) and zoning ordinance articles

---

#### 4.0 REVISIONS AND UPDATES

This RRMP was initially drafted in 2013-2014 by PacifiCorp and CH2M HILL, and finalized under the new license in 2017, in consultation with the USDA-FS and OPRD. The recreation and aesthetic/visual resource capital improvements are expected to be implemented by PacifiCorp as detailed in the RRMP through the term of the new license. However, flexibility in the RRMP is important to address unanticipated changes in conditions over time.

The annual review process may result in the adjustment of some specific actions or schedules as needed. PacifiCorp and the USDA-FS will jointly agree on any scheduled changes of specific actions during these annual meetings.

In addition, the RRMP will be reviewed and potentially revised by PacifiCorp and the USDA-FS at least every 10 years after the Final RRMP is approved by the FERC or as agreed upon by PacifiCorp and the USDA-FS. This review will occur in conjunction with the annual meetings. Either PacifiCorp or USDA-FS can submit recommendations for changes to the RRMP, and all submittals will be discussed. PacifiCorp will incorporate any agreed-upon changes to the RRMP into a revised RRMP. PacifiCorp and the USDA-FS will review and approve the revised RRMP, and it will then be submitted to the FERC for final review and approval. Any disagreements on RRMP revisions will be adjudicated by the FERC.

The following factors may trigger a revision of the RRMP:

- Revisions and updates to the *Wallowa-Whitman National Forest Land and Resource Management Plan* (a revised plan that will include the WWNF and two other nearby national forests is currently being developed by the USDA-FS under the *Blue Mountains Forest Plan Revision*).
- Catastrophic natural events, such as major forest fires or natural disasters, and significant effects of social disorder.
- New federal and state policies, regulations, and laws that significantly affect recreation resources on the Project during the license term.

Revisions to the RRMP will require approval by both PacifiCorp and the USDA-FS, with written changes documented in a revised RRMP as appropriate. The overall cost to PacifiCorp that is identified in Appendix A will not be modified as a result of any changes to the RRMP, unless mutually agreed upon by the participating parties.

---

## 5.0 WORKS CITED

PacifiCorp. 2013a. Updated Study Report (*Final Technical Report*) for *Recreation Resources*. Available at <http://www.pacificorp.com/wallowafalls#>

PacifiCorp. 2013b. Updated Study Report (*Final Technical Report*) for *Aesthetic and Visual Resources*. Available at <http://www.pacificorp.com/wallowafalls#>

United States Department of Agriculture - First Service (USDA-FS). 1990. *Wallowa-Whitman National Forest Land and Resource Management Plan*.

Wallowa County Planning Department. 2003. *Wallowa County Comprehensive Plan* and *Zoning Ordinance Articles*. On the web at:  
[http://www.co.wallowa.or.us/community\\_development/land\\_use\\_planning/index.html](http://www.co.wallowa.or.us/community_development/land_use_planning/index.html)



---

## **Exhibit A: Capital Improvements**

**RRMP Table A-1: Capital Improvements Summary**

Action	Responsible Party	Planning Year	Implementation Year	Notes
				Initial design and planning for the construction of the Project tailrace realignment and dam intake rebuild projects will occur during Year-1 of the new license (2017). Final engineering and permitting for these projects will occur during Year-2 of the new license (2018), and construction will occur during Year-3 (2019). The short construction season at the Project location will result in the tailrace and intake capital improvements near the Project powerhouse and terminus of the Joseph-Wallowa Lake Highway being constructed during 2019. Therefore, construction of the recreation improvements in the vicinity of the powerhouse is planned for 2019 and 2020.
<b>Terminus of the Joseph-Wallowa Lake Highway, Project powerhouse area, and trails to WWNF that are located on PacifiCorp land</b>				
1. Replace existing Wallowa Lake Trailhead sign and wilderness registration box.	PacifiCorp	2018	2019	<p>The sign will be installed in conjunction with the dam intake rebuild project. Design facility in coordination with USDA-FS and potentially other parties. The new sign will be approximately in the same location as the current sign. This measure is a requirement of USDA-FS 4(e) Condition 7 and is currently outside of the FERC boundary. The section of trail at the sign location is not currently used for routine access to the Project. There is an opportunity for PacifiCorp to provide funding to USDA-FS and USDA-FS would then implement the measure.</p> <p>In conjunction with Actions 2 and 6 below, the FERC Boundary will be revised upon completion of these actions to include the Wallowa Lake Trailhead sign, new gate and lower section of trail.</p>

**RRMP Table A-1: Capital Improvements Summary**

<b>Action</b>	<b>Responsible Party</b>	<b>Planning Year</b>	<b>Implementation Year</b>	<b>Notes</b>
2. Replace cable gate near powerhouse with metal pipe gate.	PacifiCorp	2018	2019	The cable gate will be installed in conjunction with the dam intake rebuild project. The gate is located outside of the current FERC boundary. The section of trail at the gate location is not currently used for routine access to the Project.  In conjunction with Actions 1 and 6, the FERC Boundary will be revised upon completion of these actions to include the Wallowa Lake Trailhead sign, new gate and lower section of trail.
3. Install 3-panel interpretive signage in the terminus area (cul-de-sac) of Joseph-Wallowa Lake Highway.	PacifiCorp	2018	2020	Design in coordination with USDA-FS and OPRD Install after completion of tailrace realignment project.
4. Replace Project fencing at the terminus of the Joseph-Wallowa Lake Highway to better blend visually with the surrounding environment.	PacifiCorp	2018	2019	To be done in conjunction with tailrace realignment project.
5. Install safety fencing around the completed tailrace barrier.	PacifiCorp	2018	2019	To be done in conjunction with tailrace realignment project.
6. Install low-maintenance landscape improvements at the Project powerhouse and at the edge of the Joseph-Wallowa Lake Highway terminus.	PacifiCorp	2018	2019	Landscape improvements at the Project powerhouse are to be made in conjunction with tailrace realignment project. The plantings will result in the elimination of the initial travel route used by operations staff for routine access to the dam. Upon completion of the landscape improvements, the gate installed in item 2 above will be used as the primary access route to the dam.  In conjunction with Actions 1 and 2 above, the FERC Boundary will be revised upon completion of these actions to include the Wallowa Lake Trailhead sign, new gate and lower section of trail.

**RRMP Table A-1: Capital Improvements Summary**

<b>Action</b>	<b>Responsible Party</b>	<b>Planning Year</b>	<b>Implementation Year</b>	<b>Notes</b>
7. Recoat Project powerhouse exterior (roof and siding) with visually compatible color that is less contrasting than current color.	PacifiCorp	NA	2022 and 2027	The roof will be recoated in Year 5 (a one-time maintenance action during the license), and the color of the siding will be changed in year 10 (a one-time maintenance action during the license) when the siding is either replaced or recoated.
8. Provide 6 new trail directional signs near portion of forebay access road and WWNF connector trails.	PacifiCorp	2018	2019	The trail directional signs will be installed in conjunction with the dam intake structure modification project. There is an opportunity for PacifiCorp to provide funding to USDA-FS and USDA-FS would then implement the measure.
<b>Portion of the Project within the WWNF</b>				
1. Improve the laydown and storage area on the east side of forebay by removing Project related refuse.	PacifiCorp	2018	2019 or 2023 if in <i>Botrychium montanum</i> suitable habitat	This action was largely completed as part of an earlier project. License Article 416 requires this action to be completed after sensitive plant surveys have been completed. Any additional ground disturbing work done under this task will be evaluated to assure that ground disturbing activities are outside of <i>Botrychium montanum</i> suitable habitat or will be postponed until after the habitat surveys have been completed in 2022.
2. Improve drainage along the connector trail between the forebay access road and the East Fork Wallowa River Trail.	PacifiCorp	2018	2019	There is an opportunity for PacifiCorp to provide funding to USDA-FS and USDA-FS would then implement the measure.
3. Improve forebay intake structure by installing wood shake siding and roofing.	PacifiCorp	2018	2019	To be done in conjunction with the dam intake structure modification project.
4. Install safety signs at forebay intake, catwalk and associated facilities at dam.	PacifiCorp	2018	2019	Signs will meet all safety standards as described in the Commission's Safety Signage at Hydropower Project Guidelines (2001).

---

**RRMP Table A-1: Capital Improvements Summary**

<b>Action</b>	<b>Responsible Party</b>	<b>Planning Year</b>	<b>Implementation Year</b>	<b>Notes</b>
5. Enhance the upper penstock trestle and penstock pipe by coating a uniform dark color.	PacifiCorp	2018	2019	To be done in conjunction with the dam intake structure modification project.
6. Install interpretive sign at the west side of forebay.	PacifiCorp	2019	2020	To be done in conjunction with the dam intake structure modification project.
7. Modify catwalk gate on the east fork dam to allow pedestrian access.	PacifiCorp	2018	2019	To be done in conjunction with the dam intake structure modification project.

**RRMP: Table A-2: Descriptions of Capital Improvements**

Improvement	Description
<b>Terminus of the Joseph-Wallowa Lake Highway, Project powerhouse area, and trails to WWNF that are located on PacifiCorp land</b>	
1. Replace existing Wallowa Lake Trailhead sign and registration box.	A new trailhead sign and registration box will replace the existing Wallowa Lake trailhead sign and registration box and be similar in design to other signs that will be developed as part of these measures. The new trailhead sign will include the appropriate USDA-FS topical information and maps. A box for registering USDA-FS wilderness permits and collecting fees also will be integrated into the sign. The trailhead sign will be designed and its specific location selected in coordination with the USDA-FS. The sign is anticipated to be located in the same general location as the existing sign and will be consistent with USDA Forest Service signage design and construction standards, guidelines and specifications in accordance with Forest Service Manuals 2392 and 7100-7160 and the Evaluation Manual 7100-15.
2. Replace cable gate near powerhouse with metal pipe gate.	The existing cable gate that prevents vehicles from the Joseph-Wallowa Lake Highway terminus from driving onto the forebay access road will be replaced with a metal pipe gate (which will be safer/easier to see than the existing cable gate and more effective at preventing vehicle access). The gate will meet the specifications provided by USDA Forest Service that are consistent with Forest Service Manual 2300.
3. Install 3-panel interpretive signage in the terminus area (cul-de-sac) of Joseph-Wallowa Lake Highway.	A three-panel informational kiosk meeting FERC Part-8 requirements will be installed at the end of the Joseph-Wallowa Lake Highway informing the public on topics such as the history of the Project, its components and operation, historical use of the area, and nearby available recreation opportunities. The sign content will be developed with input from stakeholders.
4. Replace Project fencing at the terminus of the Joseph Wallowa Lake Highway.	Remove all existing 2-inch mesh galvanized chain-link fencing around the Project powerhouse and fenced-in yard with 2-inch mesh black vinyl-coated chain-link fencing.
5. Install safety fencing around the completed tailrace.	The safety fencing will match the fencing installed under 4 above in color and type to the extent possible.
6. Install low-maintenance landscape improvements at the Project powerhouse and at the edge of the Joseph-Wallowa Lake Highway terminus.	Low-maintenance landscape improvements for approximately 2,500 square feet (native vegetation, boulders, rock, cobble, and/or gravel) will be installed at the northern edge of the portion of the Project powerhouse yard adjacent to the edge of the Joseph-Wallowa Lake Highway terminus. The intent of the landscaping will be to screen views of the Project powerhouse and fenced-in yard, and make the area more attractive. Additionally, the landscape improvements will serve as a backdrop to the interpretive signs that are described in Section 2.2.3.

**RRMP: Table A-2: Descriptions of Capital Improvements**

<b>Improvement</b>	<b>Description</b>
7. Recoat powerhouse exterior with compatible color that is less contrasting than current color.	The light-colored powerhouse roof, will be recoated with a more appropriate color (i.e., darker and nonreflective) in 2022 (Year 5 after the license is issued). The color of the powerhouse siding will be changed to a dark green color similar to that of trees behind when the siding requires recoating or replacing 2027 (Year 10 of the new license).
8. Provide 6 new trail signs near portion of forebay access road and WWNF connector trails.	New, more legible directional signs along the forebay access road on PacifiCorp land and connector trails to WWNF trails. Also includes sign on forebay access road near waterfall and lower penstock trestle. Signs shall be constructed and installed according to specifications provided by USDA Forest Service consistent with direction in Forest Service Manual 2392.
<b>Portion of the Project within the WWNF</b>	
1. Improve the laydown and storage area on east side of forebay.	This action was largely completed as part of an earlier project and most of the debris has been removed. Any remaining material will be removed to the extent possible. Actively used material in this area will be consolidated behind the existing storage structure.
2. Improve drainage along the connector trail between the forebay access road and the East Fork Wallowa River Trail.	A turnpike drainage structure will be constructed per USDA-FS standards for an area between the bridge that crosses the Project bypassed reach and the forebay access road to address the current drainage situation that results in the trail becoming muddy for much of the summer. It may be appropriate for PacifiCorp to provide funding for the Project to USDA-FS and they will complete project construction.
3. Improve forebay intake structure by installing wood shake siding and roofing.	Wood shakes will be attached to the intake structure-equipment house's exterior and roof (which are currently plywood) to make the structure similar in appearance to the storage structure that can be seen on the east side of the forebay.
4. Install safety signs at forebay intake, catwalk and associated facilities at dam.	Sign messaging and size will be mutually agreed upon by PacifiCorp and USDA-FS. USDA-FS will provide specification for the construction and installation of these signs consistent with direction in FSM 2392.
5. Enhance the upper penstock trestle and penstock pipe by coating a uniform dark color.	The upper penstock trestle and penstock will be painted or coated with a uniform dark color that will be selected in consultation with the USDA-FS. The trestle concrete support structures will be stained a darker gray similar to the color of nearby rocks. Nearby rocks will be gathered and placed on top of, and adjacent to, the portions of the support structures that are visible from the East Fork Wallowa Trail (# 1804) to better blend the support structures into the adjacent landscape.

---

**RRMP: Table A-2: Descriptions of Capital Improvements**

<b>Improvement</b>	<b>Description</b>
6. Install interpretive sign at the west side of forebay.	An interpretive sign will be installed along the East Fork Wallowa Trail (#1804) near the forebay that will describe the Project, include a map of the local trail system and potentially, information related to the Eagle Cap Wilderness.
7. Modify catwalk gate on the east fork dam to allow pedestrian access.	The catwalk over the forebay dam spillway bridge will be modified to allow year-round pedestrian access. The modifications should be made in such a way as to discourage horses from crossing the catwalk.



---

## **Slipsheet**

### **Figure A-1**

**(See .PDF file attached to transmittal email)**



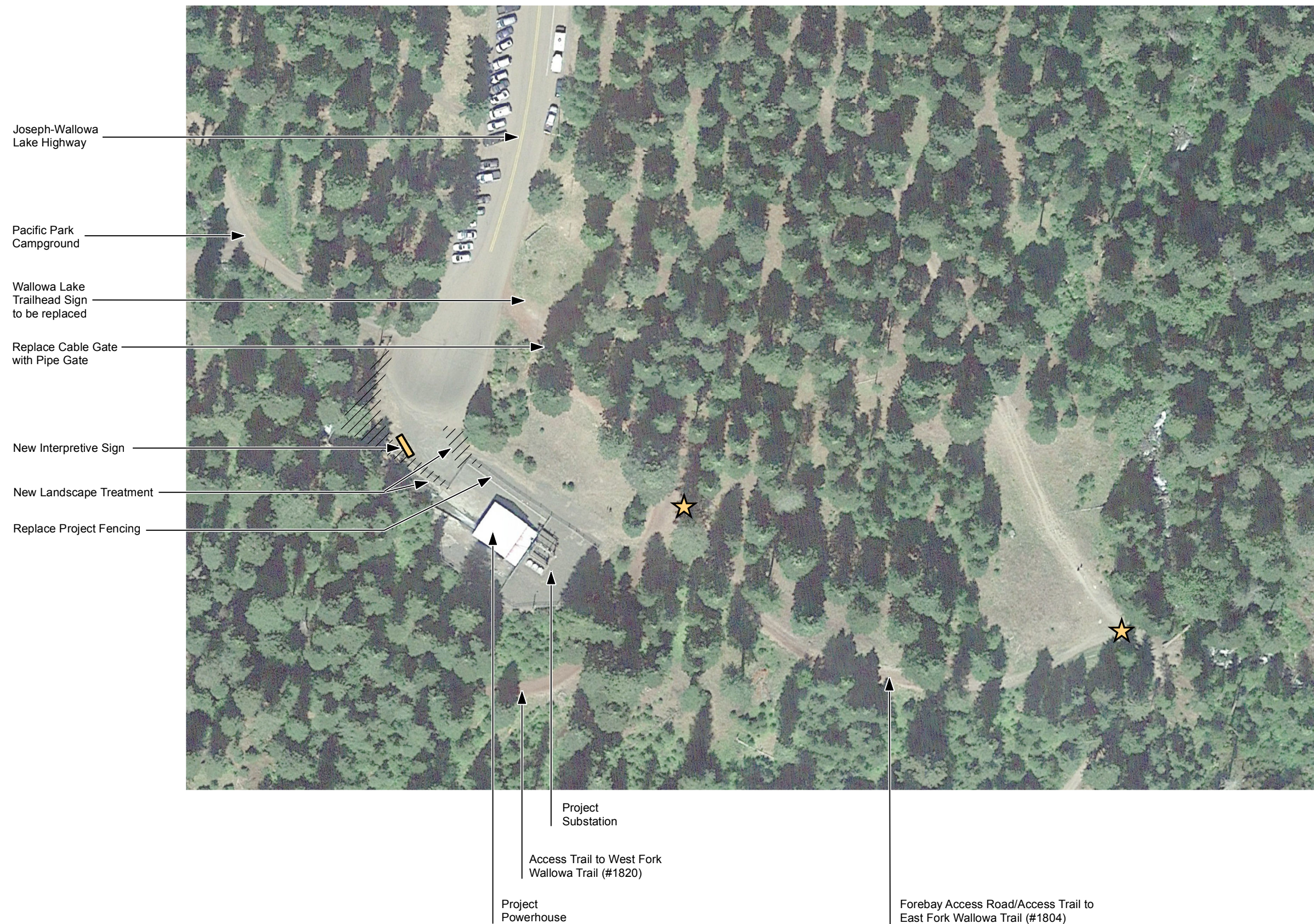
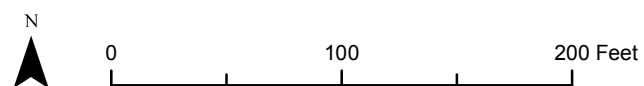


Figure A-1  
**Capital Improvements  
 Near Terminus of  
 Joseph-Wallowa lake  
 Highway**  
*Wallowa Falls Hydroelectric Project*

★ Potential Locations for New Signs (there will be directional signs along access trails and the Forebay access Road)





---

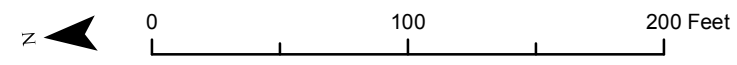
## **Slipsheet**

### **Figure A-2**

**(See .PDF file attached to transmittal email)**



Figure A-2  
Capital Improvements  
within Wallowa-Whitman  
National Forest in Vicinity  
of Project Dam and Forebay  
*Wallowa Falls Hydroelectric Project*





---

## **Exhibit B: Maintenance Responsibilities**

## RRMP: EXHIBIT B: Maintenance Responsibilities

Facility	Responsible Party	Funding Responsibility	Notes
<b>Terminus of Joseph-Wallowa Lake Highway, Project powerhouse area, and trails to WWNF that are located on PacifiCorp land</b>			
1. Replace existing Wallowa Lake Trailhead sign and registration box.	PacifiCorp	PacifiCorp	USDA-FS may fabricate and install signs.
2. Replace cable gate near powerhouse with metal pipe gate.	PacifiCorp	PacifiCorp	
3. Install 3-panel interpretive signage in the terminus area (cul-de-sac) of Joseph-Wallowa Lake Highway.	PacifiCorp	PacifiCorp	
4. Replace Project fencing at the terminus of the Joseph Wallowa Lake Highway.	PacifiCorp	PacifiCorp	
5. Install safety fencing around the completed tailrace barrier.	PacifiCorp	PacifiCorp	
6. Install low-maintenance landscape improvements at the Project powerhouse and at the edge of the Joseph-Wallowa Lake Highway terminus.	PacifiCorp	PacifiCorp	
7. Recoat powerhouse exterior with compatible color that is less contrasting than current color.	PacifiCorp	PacifiCorp	
8. Provide 6 new trail directional signs near portion of forebay access road and WWNF connector trails.	PacifiCorp	PacifiCorp	USDA-FS may fabricate and install signs.
<b>Portion of the Project within the WWNF</b>			
1. Improve the laydown and storage area on east side of forebay.	PacifiCorp	PacifiCorp	
2. Improve drainage along the connector trail between the forebay access road and the East Fork Wallowa River Trail.	PacifiCorp	PacifiCorp	USDA-FS may implement construction
3. Improve forebay intake structure by installing wood shake siding and roofing.	PacifiCorp	PacifiCorp	

---

**RRMP: EXHIBIT B: Maintenance Responsibilities**

<b>Facility</b>	<b>Responsible Party</b>	<b>Funding Responsibility</b>	<b>Notes</b>
4. Install safety signs at forebay intake, catwalk and associated facilities at dam.	PacifiCorp	PacifiCorp	
5. Enhance the upper penstock trestle and penstock pipe by coating a uniform dark color.	PacifiCorp	PacifiCorp	
6. Install interpretive sign at the west side of forebay.	PacifiCorp	PacifiCorp	USDA-FS may fabricate and install sign.
7. Modify catwalk gate on the east fork dam to allow pedestrian access.	PacifiCorp	PacifiCorp	

---

**Exhibit C: FERC Form-80**  
**(filed in March 2009)**



Schedule 1. General Information													
1. Licensee Name:	PACIFICORP	8. Reservoir Surface Area at Normal Pool (acres):	1.00										
2. Project Name:	WALLOWA FALLS	9. Shoreline Miles at Normal Pool:	0.10										
3. Project Number:	308	10. Percent of Shoreline Safely Accessible to the General Public by Land Travel without Trespassing:	0.10										
4. Development Name:	WALLOWA FALLS DIVERSION	Site Number	003080101										
5. State 1: 6. State 2: 7. Type of Project License	OR  Minor	11. Data Collection Methods	<table border="1"> <tr> <td>0.00</td> <td>traffic count/trail count</td> </tr> <tr> <td>90.00</td> <td>attendance records</td> </tr> <tr> <td>5.00</td> <td>staff observation</td> </tr> <tr> <td>0.00</td> <td>visitor assessment</td> </tr> <tr> <td>5.00</td> <td>estimate</td> </tr> </table>	0.00	traffic count/trail count	90.00	attendance records	5.00	staff observation	0.00	visitor assessment	5.00	estimate
0.00	traffic count/trail count												
90.00	attendance records												
5.00	staff observation												
0.00	visitor assessment												
5.00	estimate												
12. Dollar Values (Construction, Operation and Maintenance Costs)	\$5000.00	12. Dollar Values (Recreation Revenues for Calendar Year)	\$3715.00										
13. Length of Recreation Season Summer: From (MM/DD)	05/01 To 09/30	13. Length of Recreation Season Winter: From (MM/DD)	10/01 To 04/30										
14. Number of visits to all recreational areas at development/project (in Recreation Days) (Day Time)	0	14. Number of visits to all recreational areas at development/project (in Recreation Days) (Peak Weekend Average)	0										
15. Number of visits to all recreational areas at development/project (in Recreation Days) (Nighttime)	541	15. Number of visits to all recreational areas at development/project (in Recreation Days) (Nighttime)	60										
Legal Name	David Moore	Title	Environmental Analyst										
Area Code/Phone No	5038136945	Signature	David Moore										
Date Signed	03/23/2009	Report Year Ending	2008										

---

**Schedule 2. Inventory of Recreational Resources**

Recreational Resource Type (a)	User Free(b)	User Fee(c)	No. FERC Approved Resources (d)	Total Miles/Acres(e)	Facility Capacity (percent) (f)
Access Areas	0	0	0	N/A	0.00
Boat Launch Areas.	0	0	0	N/A	0.00
Boat Launch Lanes.	0	0	0	N/A	0.00
Marinas	0	0	0	Acres 0.00	0.00
White Water Boating	0	0	0	N/A	0.00
Canoe Portages.	0	0	0	Miles 0.00	0.00
Tail Water Fishing	0	0	0	N/A	0.00
Fishing Piers	0	0	0	N/A	0.00
Parks	0	0	0	Acres 0.00	0.00
Playground Areas	0	0	0	Acres 0.00	0.00
Trails	0	0	0	Miles 0.00	0.00
Swimming Areas	0	0	0	Acres 0.00	0.00
Picnic Areas	0	0	0	Acres 0.00	0.00
Wildlife Areas	0	0	0	Acres 0.00	0.00
Visitor Center	0	0	0	N/A	0.00
Interpretive Displays	0	0	0	N/A	0.00
Overlooks	0	0	0	Acres 0.00	0.00
Hunting Areas	0	0	0	Acres 0.00	0.00
Golf Courses	0	0	0	Acres 0.00	0.00
Cottage/Cabin sites	0	0	0	N/A	0.00
Camping Areas	0	1	1	Acres 3.00	75.00
Tent/Trailer/RV Sites	0	11	11	Acres 3.00	75.00
Organizational Camps	0	0	0	Acres 0.00	0.00
Group Camps	0	0	0	Acres 0.00	0.00
Winter Sports	0	0	0	N/A	0.00
Other	0	0	0	N/A	0.00

## Exhibit D: Stakeholder Comments and Response Matrix

Tribe or Agency	Comment	PacifiCorp Response
USDA-Forest Service	<p><b>1.2 Goals</b></p> <p>Under the Goals section the Plan describes that to meet the Recreation and Aesthetic Resource Manage Plan (RRMP) purpose and intent, PacifiCorp developed goals and objectives that guide existing and future recreation planning and design activities near the Project and aesthetic/visual resource enhancements, as well as also guide overall decision-making during the term of the new license.</p> <p>However, the Plan does not provide information on how PacifiCorp wil maintain or improve the conditions of existing restroom facilities that are dependent by day-use and overnight recreational users. Please identify or include the long and short term maintenance and service plans for all restroom facilities, particularly the sewage pumping and sanitary maintenance schedule of the two outhouses near Pacific Park.</p>	<p>Not Adopted. PacifiCorp revised the language in the first paragraph of Section 1.2 to clarify that the goals and objectives apply only to recreation planning and design activities “to comply with the Project license, as well as also guide overall decision-making during the term of the new license”. As stated in paragraph 137, page 33 of the FERC license, there is no clear connection between the Pacific Park Campground’s use and the project. Operation of Pacific Park Campground and associated facilities is not a license requirement.</p> <p>Bulleted goals identified in Section 1.2 were also edited to indicate that actions of this RRMP pertain only to Project FERC license requirements.</p> <p>PacifiCorp remains willing to discuss a number of non-project related issues in the vicinity including the toilets at Pacific Park Campground with the USDA-Forest Service independent of license required documents.</p>