

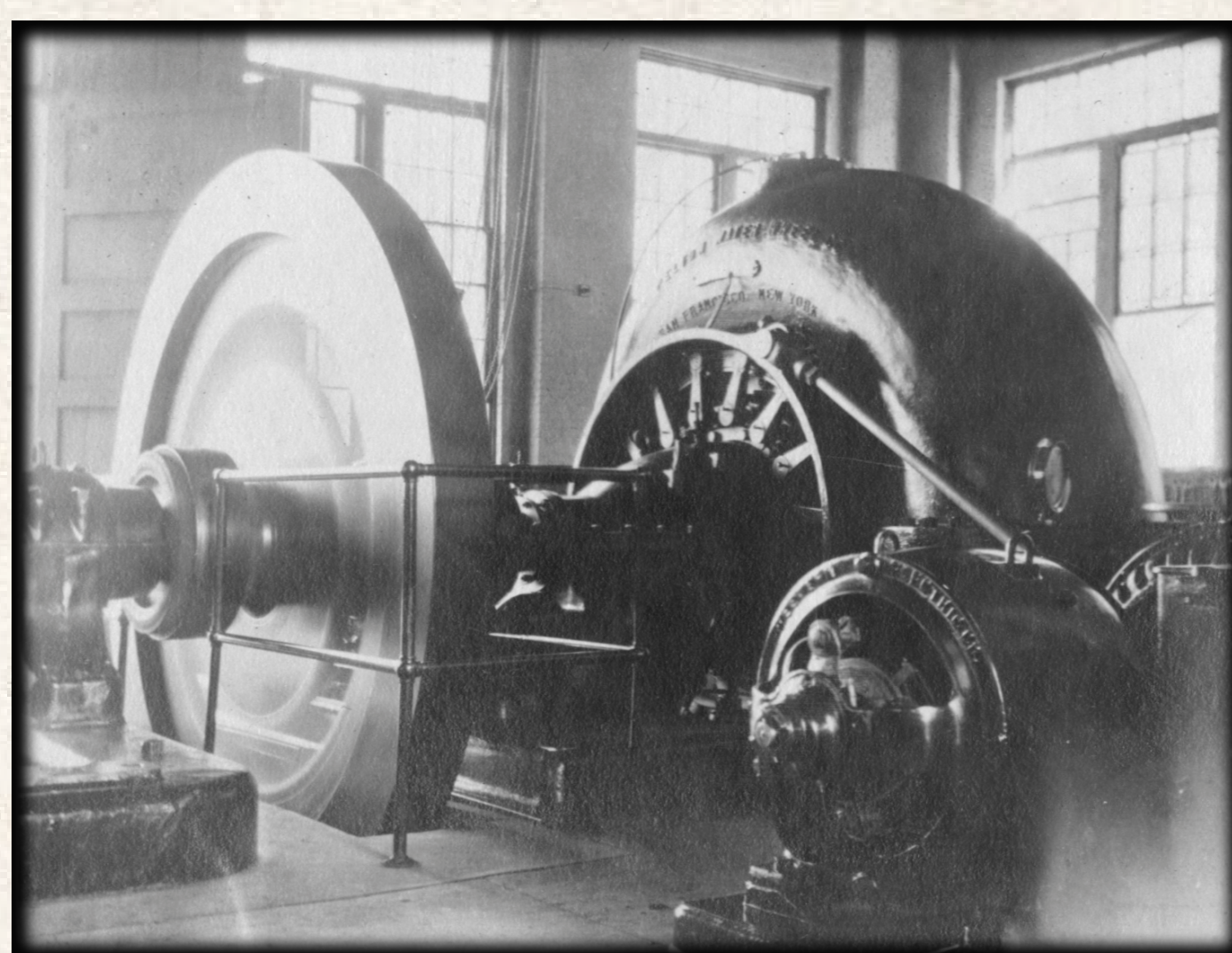


# WEBER HYDROELECTRIC PROJECT

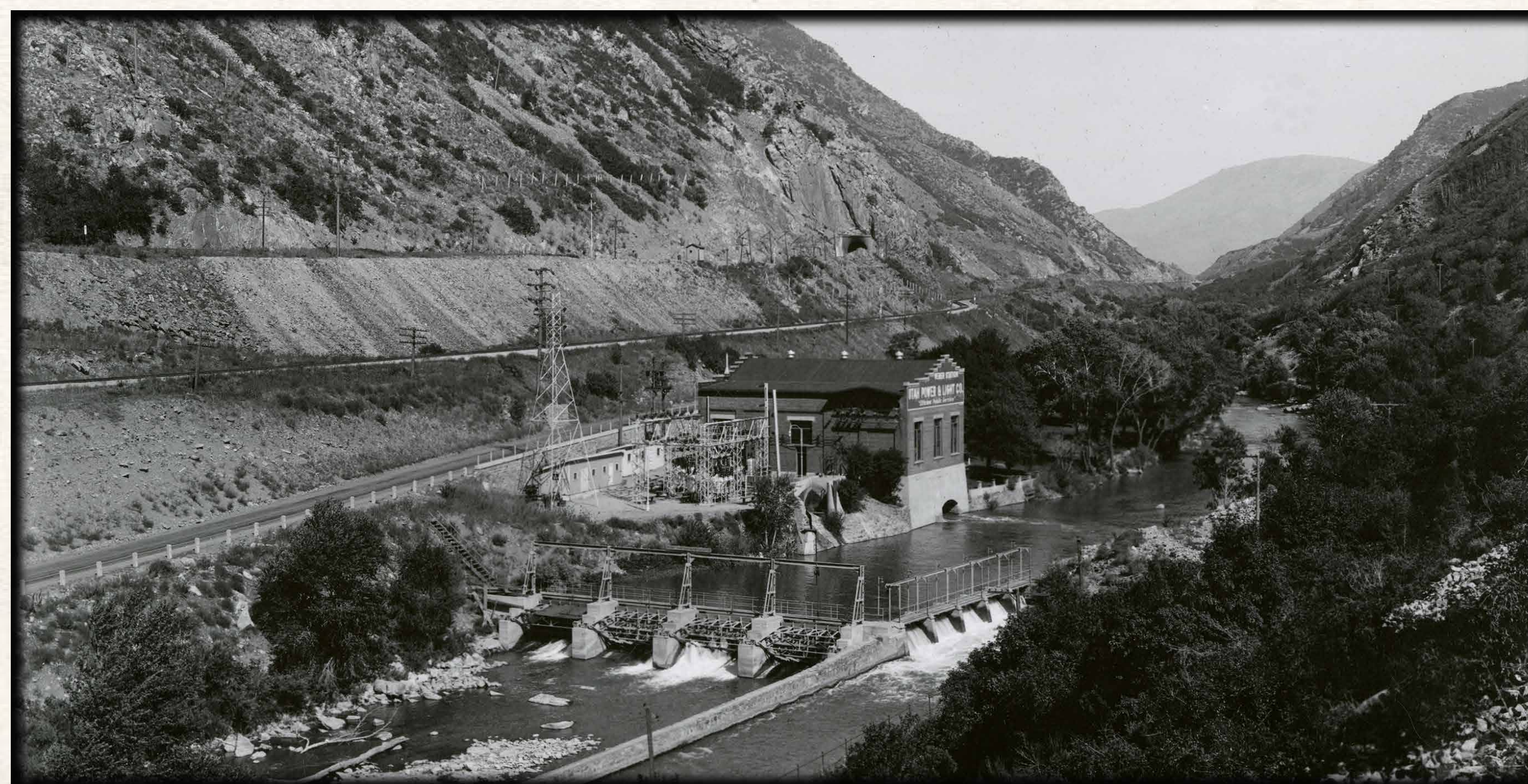
## HISTORIC PHOTOGRAPHS



Intake works and dam upstream from the Weber River Hydroelectric Project, circa 1910.



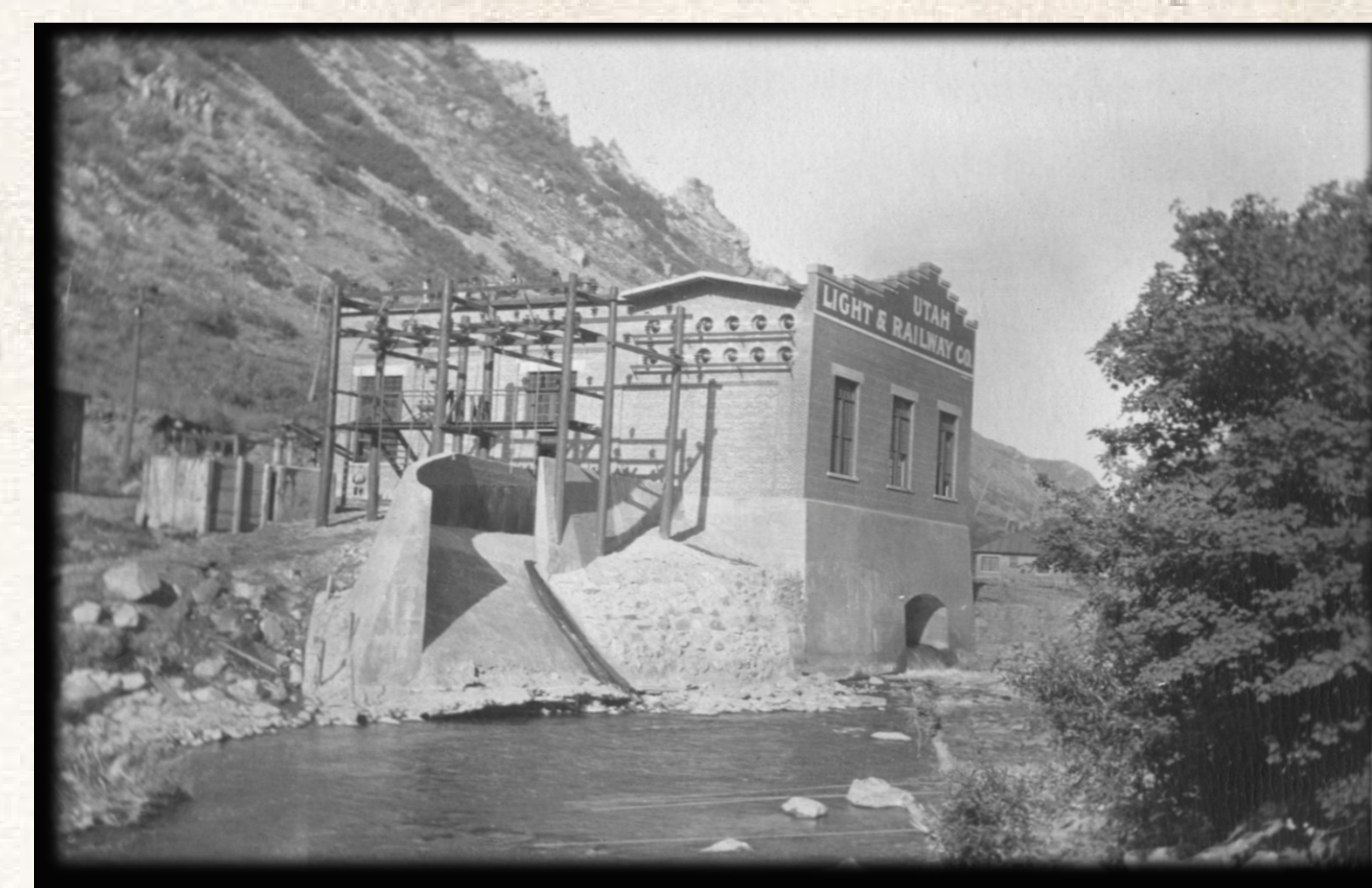
Hydraulic equipment at Weber River Plant, 1914.



Powerhouse, substation, and dam along the Weber River, circa 1945.



Power plant along the Weber River under construction, 1908-1910.



Powerhouse and original spillway, circa 1910.