



WEBER HYDROELECTRIC PROJECT

Weber Hydroelectric Project Relicensing Process—Project Scoping

FERC No. P-1744

PacifiCorp



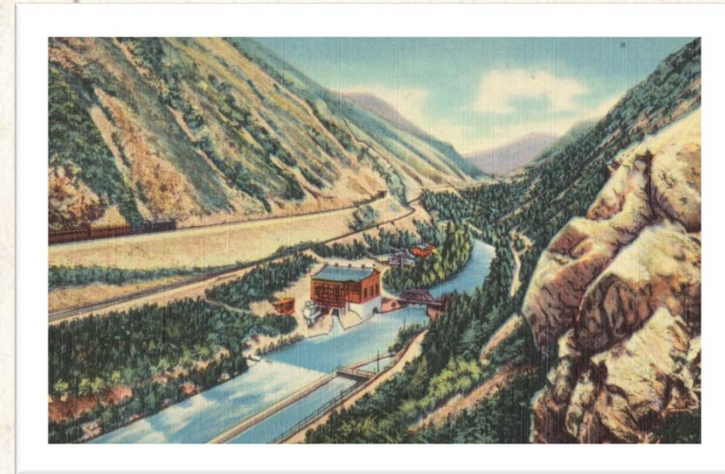
A BERKSHIRE HATHAWAY ENERGY COMPANY



WEBER HYDROELECTRIC PROJECT

Relicensing Project Scoping Overview

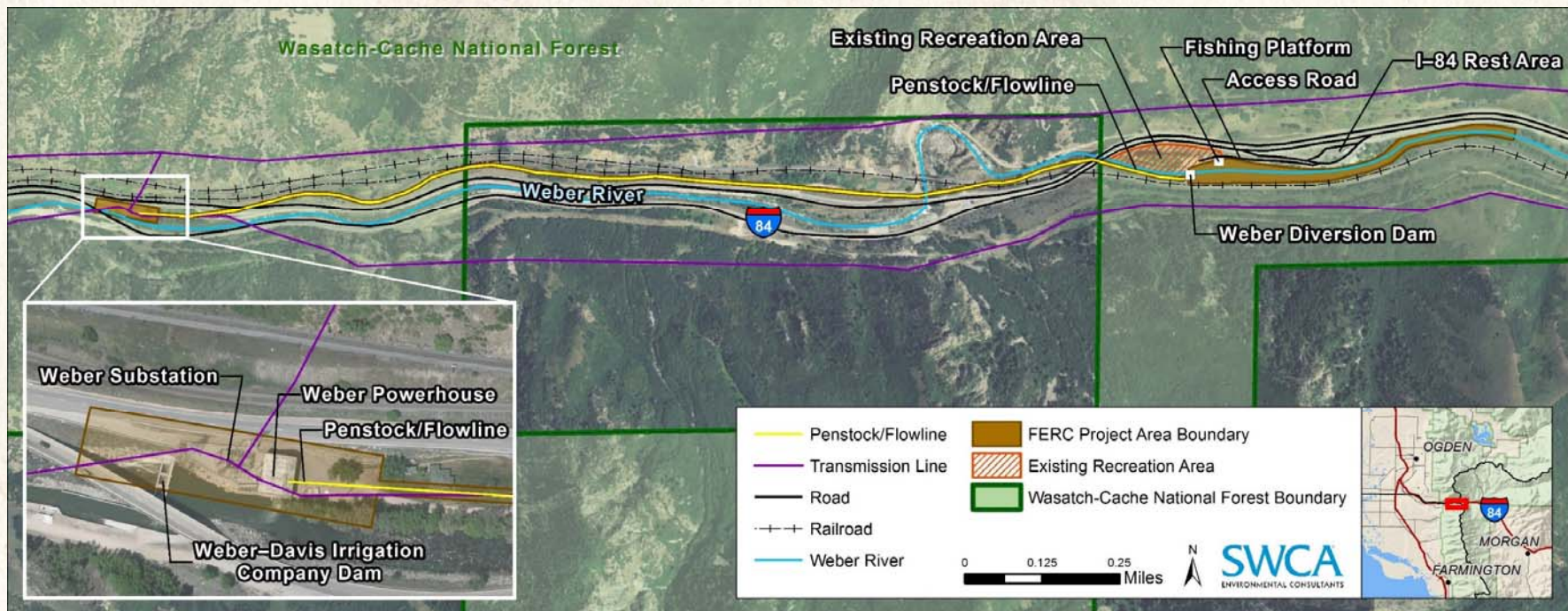
- Current license issued 1989; expires May 31, 2020.
- FPA governs the process required to relicense the project; primary regulatory agency for the process is FERC.
- PacifiCorp is beginning that process and is requesting input and comments on the Weber relicensing project.
- PAD/NOI and request to use ALP submitted/noticed May 29, 2015, included Communication Protocol.
- FERC noticed acceptance of ALP process for Weber relicensing on August 13, 2015.
- Study plans (5) drafted July–September 2015.
- October 6–7 scoping meetings, site visit, and study plan meetings are all required to meet the ALP process milestones and will help PacifiCorp guide the Weber relicensing project; conducted in collaboration with FERC.





WEBER HYDROELECTRIC PROJECT

Location and Components of the Weber Hydroelectric Project





WEBER HYDROELECTRIC PROJECT

Project Overview

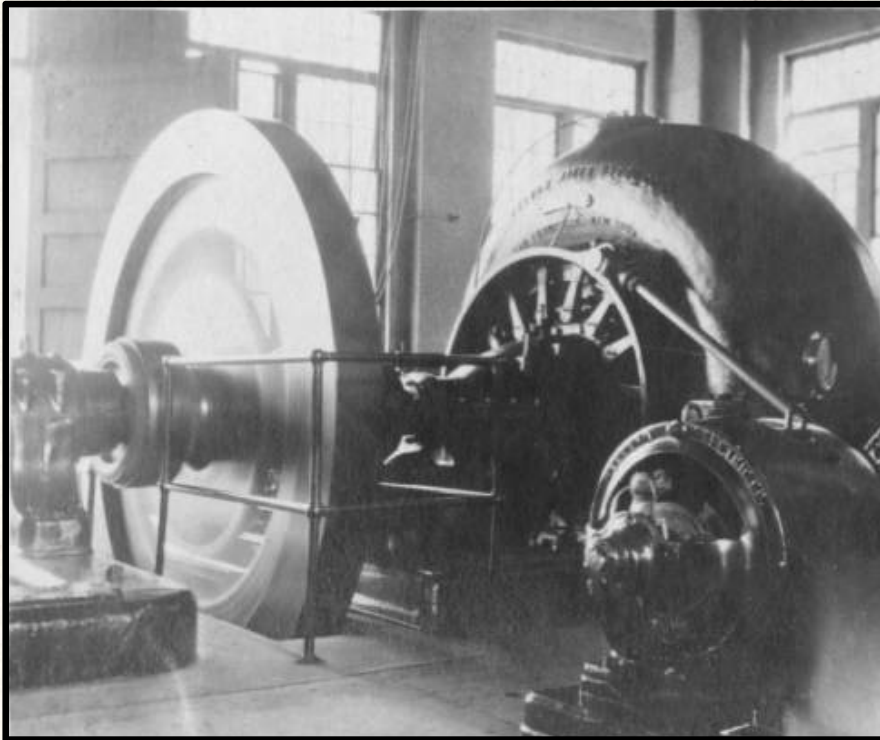
- Constructed 1908–1910
- 1903 water right of 365 cubic feet per second (cfs) (1938 and 1965 Bureau of Reclamation contracts)
- Run-of-river project
- 27-foot-high, 114-foot-long concrete diversion dam
- Approx. 9,138-foot-long concrete and steel pipeline
- 185-foot head
- Nameplate rating of 3.85 megawatts (MW)/330 cfs
- Horizontal 5,000-horsepower (hp) dual Francis reaction turbine
- 46-kilovolt (kV), 77-foot-long transmission line





WEBER HYDROELECTRIC PROJECT

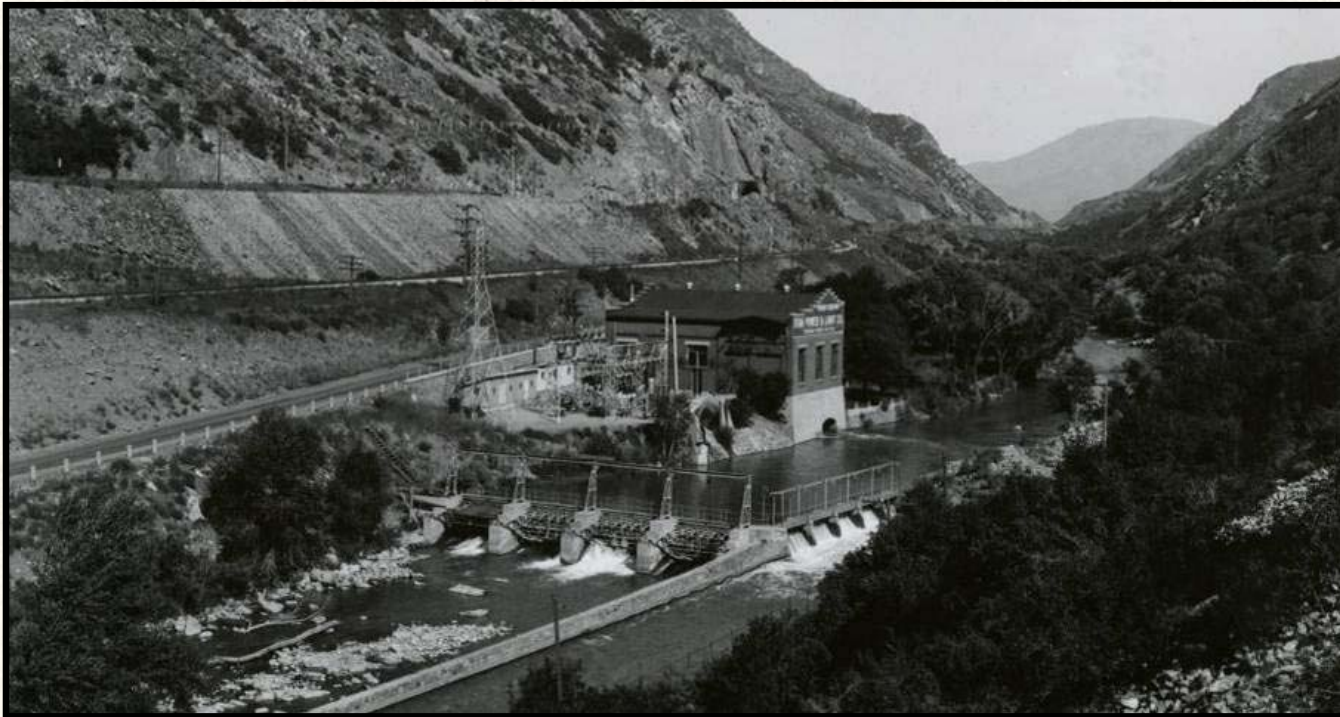
Weber Plant, ca. 1914





WEBER HYDROELECTRIC PROJECT

Weber Plant, ca. 1945





WEBER HYDROELECTRIC PROJECT

Project Facilities: Diversion Dam

- 27-foot-high, 114-foot-long concrete diversion dam
- Intake structure
- 8.4-acre forebay
- Run-of-river operation
- Located between railroad tracks, I-84, and multiple pipelines





WEBER HYDROELECTRIC PROJECT

Project Facilities: "Fish Ladder"/Ice Chute





WEBER HYDROELECTRIC PROJECT

Project Facilities: Flowline/Penstock

- Approx. 9,138-foot-long concrete and steel pipeline
- Buried throughout much of its 1.7-mile length
- Two freeway crossings
- One river crossing
- One railroad crossing





WEBER HYDROELECTRIC PROJECT

Project Facilities: Trestle Crossing





WEBER HYDROELECTRIC PROJECT

Project Facilities: Powerhouse

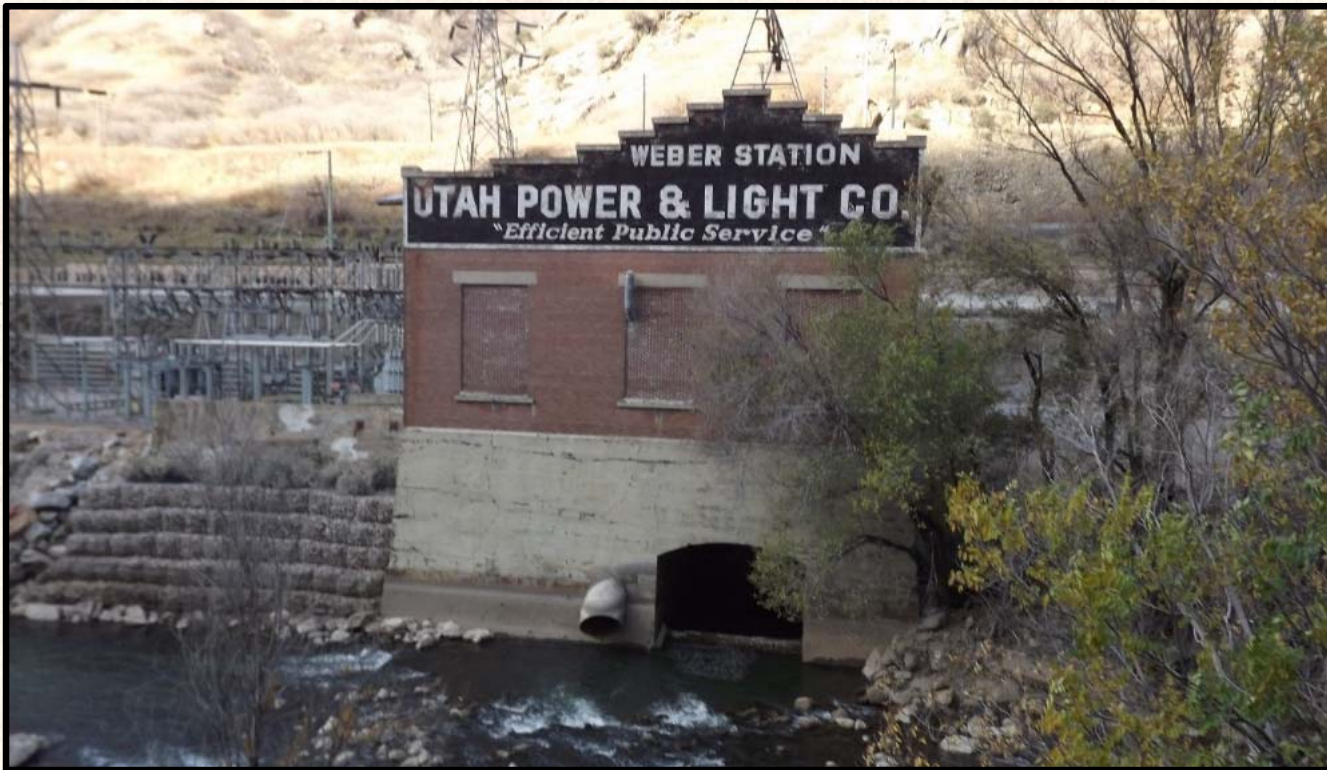
- One generating unit
- Rated at 3.85 MW/330 cfs
- Horizontal, 5,000-horsepower, dual Francis reaction turbine
- Average annual generation of 16.932 gigawatt hours (GWh)
- Additional average annual 3.9 GWh - 1938 contract





WEBER HYDROELECTRIC PROJECT

Project Facilities: Powerhouse/Substation





WEBER HYDROELECTRIC PROJECT

Project Facilities: Transmission Line



- 46 kV
- 77 feet long
- Substation is a Rocky Mountain Power asset



WEBER HYDROELECTRIC PROJECT

PacifiCorp Weber Relicensing Process

- May 2015: PacifiCorp filed NOI and PAD, as well as required Communication Protocol and request to use ALP.
- Three license processes available; PacifiCorp requested and FERC approved the ALP. (ALP *requires* collaborative process among proponent and stakeholders.)
- October 2015: Scoping process (collaboratively with FERC, who also provided additional details of the FERC-specific parts of the process), and begin study plan negotiations.
- Late winter/spring 2016: First study season.
- 2016-2017: Study plan reports and 6-month process reports submitted to FERC.
- 2018–2019: Draft and final license applications submitted (potentially also a settlement agreement); PacifiCorp submits APEA; FERC completes their separate and independent NEPA process.
- 2020: FERC issues new license.



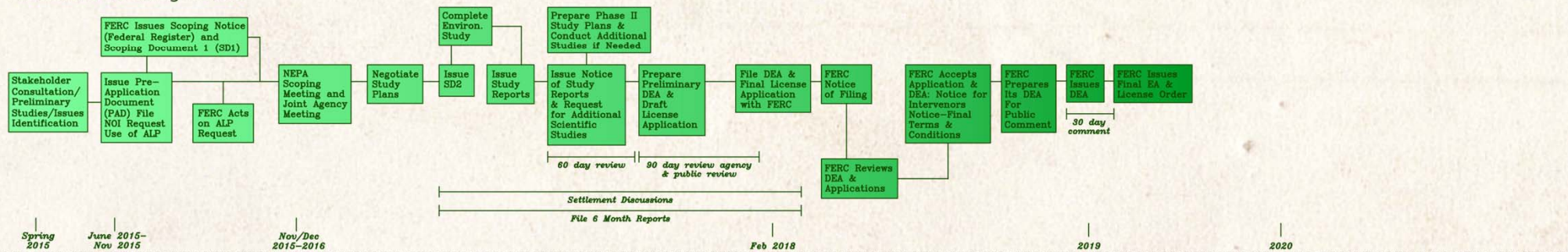
WEBER HYDROELECTRIC PROJECT

ALP detailed process, cont.

PacifiCorp

Process Timeline for Relicensing
Weber Hydroelectric Project
FERC No. 1744

Alternative Licensing Process



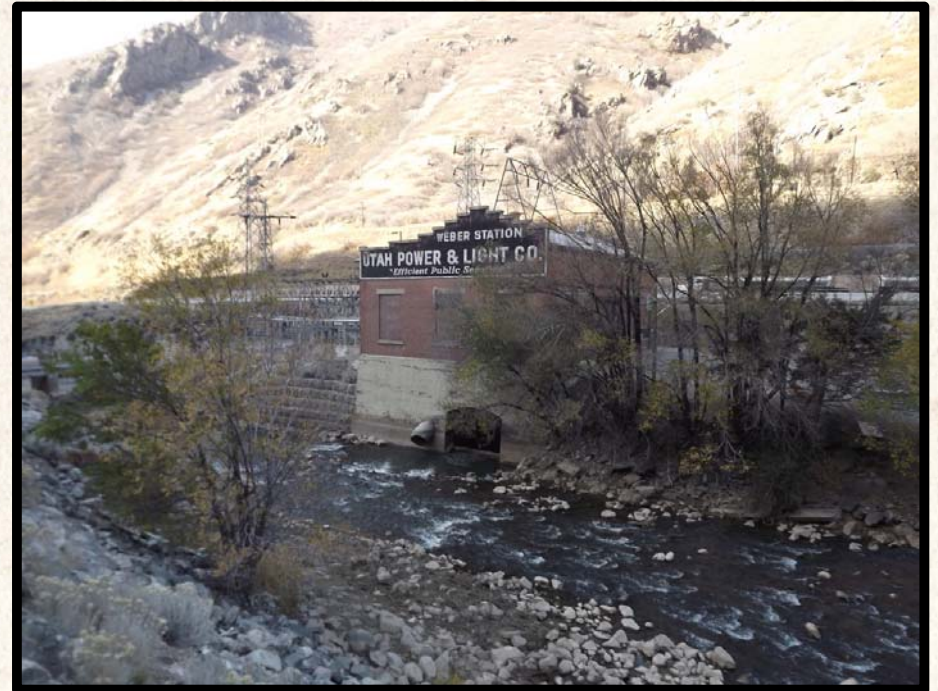
- Questions on process, timelines, FERC contact, etc?



WEBER HYDROELECTRIC PROJECT

Potential/Typical License Issues

- Fisheries Resources and Fish Passage*
- Recreation Resources*
- Land Rights
- Water Quantity and Quality*
- Cultural Resources*
- Terrestrial Wildlife Resources*
- Botanical Resources*





WEBER HYDROELECTRIC PROJECT

Preliminary Weber License Issues/Proposed Studies

- Water Quality: Water quality study plan; standard water quality parameters at three sites—above, below, and in the bypassed reach.
- Fisheries Resources: Fisheries study plan; two components: Upstream passage and entrainment.
- Terrestrial Wildlife and Botanical Resources: Terrestrial resources study plan (TES and noxious weeds) completed summer 2015.
- Recreation Resources Study Plan: Needs and opportunities studies address recreation access under I-84/ whitewater boater flows/facility upgrades.
- Land Rights: Not a study per se but related to Exhibit G and potential boater egress; property survey currently in progress.
- Cultural Resources: Cultural resources study plan; standard survey of project boundary area; completed Fall 2015.





WEBER HYDROELECTRIC PROJECT

License Issues: Fisheries and Fish Passage

- Bluehead sucker (right and center)
- Fluvial Bonneville cutthroat trout (below left)
- Photographs taken at Weber diversion dam/day use site



Photos courtesy of UDWR



WEBER HYDROELECTRIC PROJECT

License Issue Detail: Fisheries and Fish Passage

- Two species of concern at Weber: Bonneville cutthroat trout and bluehead sucker.
- Bonneville cutthroat trout proposed for listing but found to not be warranted by the USFWS. Bluehead sucker could be proposed within 5 years.
- Both species have stronghold populations in the reach between Weber Dam and the powerhouse.
- In 2011, Bonneville cutthroat trout population was discovered to retain fluvial life history trait, only the second population known to do so and the only one in Utah.
- Fish passage at PacifiCorp Weber Dam is one of the highest priorities for upstream passage in Utah.





WEBER HYDROELECTRIC PROJECT

Proposed Studies: Fisheries and Water Quality

- Water quality studies (temperature, pH, dissolved oxygen, turbidity, nutrient levels): Three monitoring points collected hourly: above the Project Area, in the bypassed reach, and immediately below the powerhouse.





WEBER HYDROELECTRIC PROJECT

Proposed Studies: Fisheries and Water Quality, cont.

- Instream flow studies: The 34–50 cfs seasonal minimum flow in place since the 1940s has resulted in stronghold populations for both species; no studies proposed.
- Telemetry work already completed by UDWR/TU.
- Create Fish Passage Work Group (interested stakeholders subset).
- Upstream Fish Passage Design (Study 1).
- Downstream Fish Passage Necessity/ Effects of Entrainment: Who and What (Study 2, two phases).
- Bluehead sucker spawning study. (Some resources committed to ongoing study.)





WEBER HYDROELECTRIC PROJECT

Proposed Studies: Terrestrial TES and Noxious Weeds

- Terrestrial general wildlife: No studies proposed, given project area features (no open canals; freeway and railroad tracks limit potential for intact non-avian wildlife habitat in the project area).
- Terrestrial TES wildlife species: None identified with potential breeding/nesting habitat in the project area. (PAD id'd as possible yellow-billed cuckoo, sage-grouse, and smooth green snake in the project vicinity. Only potential for YBC occasional migrant in the project area.)
- TES botanical resources: Study plan addressed potential for Ute ladies' tresses. (PAD id'd one other plant potentially in the vicinity, but no habitat in the project area.) Searched potential habitat (Weber River margins and riparian gravel bars) in bypassed reach in August 2015 for ULT and two other species requested by the USFS. No special-status species identified. Repeat searches will be made in 2016 and 2017.
- Preliminary Draft Terrestrial TES and Noxious Weed Study Plan circulated in July. Minor comments from USFS and USFWS addressed. Work completed in 2015.





WEBER HYDROELECTRIC PROJECT

Proposed Studies: Recreation

- Recreation “Needs and Opportunities” Study proposed to evaluate potential feasibility specifically for whitewater boater recreation component.
- Phased approach evaluates recreation supply, use, and demand, as well as needs (potential user group, seasonal water flow availability, potential to provide safe, legal egress site for whitewater boaters, boater questionnaire).
- Potential boater egress site on USFS land across from the powerhouse and adjacent to Davis-Weber Canal headgates will be evaluated.
- Existing recreation site facilities will be evaluated, and user groups better defined from FERC Form 80 data indicating ~20,000 annual visitors.
- Potential upgrade to user-defined pedestrian access trail extending from existing recreation site under I-84 bridge will be evaluated.
- “Recreation Needs Analysis”: Summary report of above.





WEBER HYDROELECTRIC PROJECT

Proposed Studies: Cultural Resources

Existing Information:

- Two known cultural resources sites are located in the project area: the Union Pacific Railroad and the Devil's Gate Weber Hydroelectric Power Plant Historic District (Weber Hydroelectric Plant's historic name).
- It is unlikely that additional cultural resources are located in the project area because of the existing development along the narrow canyon.
- No tribal lands or tribal claims in the project area.
- A cultural resources management plan (CRMP) exists as part of the previous FERC license.

Proposed Study:

- Conduct a pedestrian survey of the project area to verify the results of the PAD assessment (complete).
- All work conducted to Utah SHPO and USFS standards.
- Report results of the survey for Section 106 consultation.
- Assess existing CRMP for a potential update.





WEBER HYDROELECTRIC PROJECT

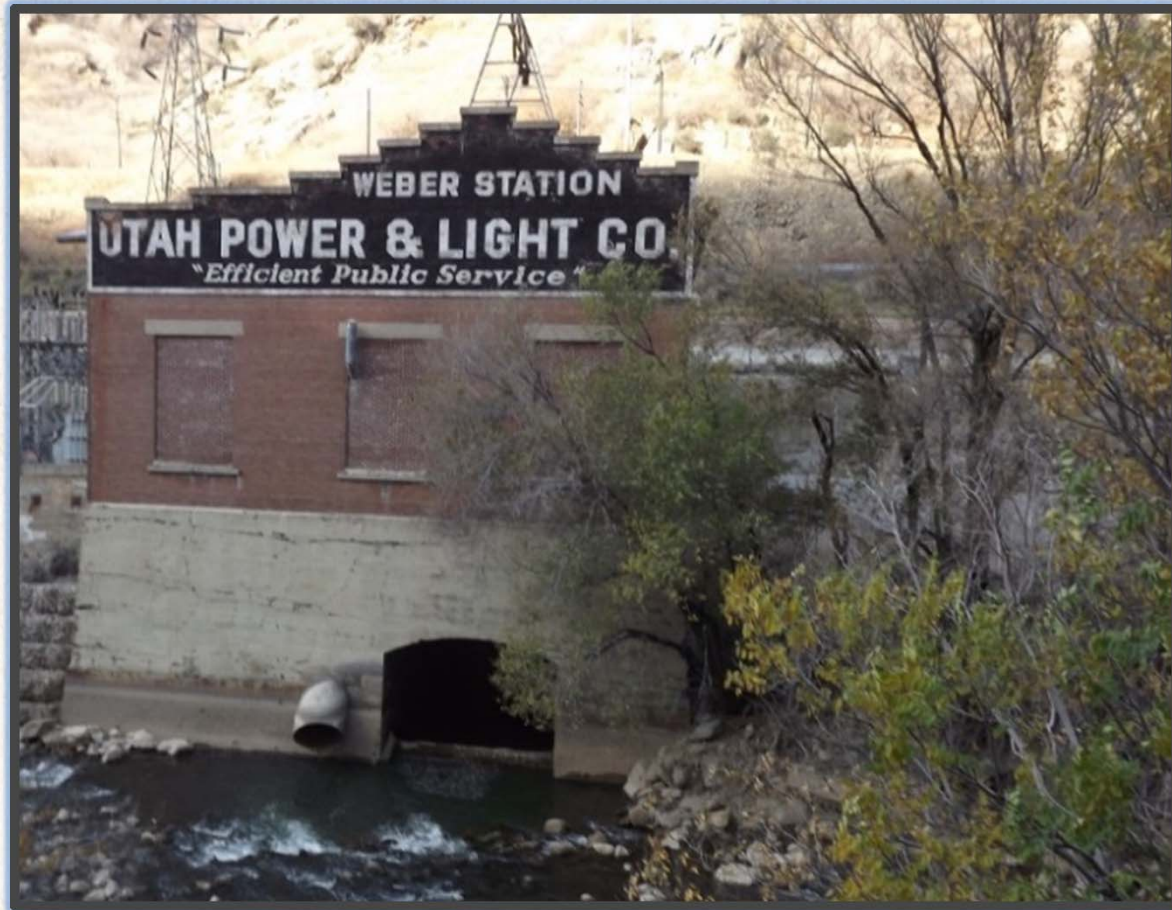
Potential Mitigation and Enhancement Measures (PM&Es)

- Construct functional fish ladder appropriate for *both* Bonneville cutthroat trout and bluehead sucker to allow for upstream fish passage.
- Existing recreation site upgrade (vault toilets, wind breaks, fishing access improvements).
- If safe, legal egress can be identified, pursue whitewater boater flows (per recreation needs analysis).





WEBER HYDROELECTRIC PROJECT



Questions or
comments?



WEBER HYDROELECTRIC PROJECT

PacifiCorp Statement of Interest: Vision and Mission

- **PacifiCorp VISION:** Transform the future of electricity in the West through innovation, flexibility, and strategic partnerships.
- **PacifiCorp MISSION:** To be the best energy company in serving our customers, while delivering sustainable energy solutions.



WEBER HYDROELECTRIC PROJECT

PacifiCorp Statement of Interest

We have an interest in:

- Reaching full and timely agreement through collaboration on all issues, including the identification and implementation of protection, mitigation, and enhancement measures to be included in the FERC relicensing of the Weber Hydroelectric Project.
- Promoting an open, interest-based process where all participants can safely voice opinions and reach collaborative solutions that will work and are sustainable over time.
- Operating the Weber Project in the public interest:
 - Safe, economic, sustainable generation operations
 - Mitigate project impacts/environmental footprint
 - Provide enhancements
- Preserving the renewable, efficient generation and other values provided by the project.
- Protecting PacifiCorp's current investment and ensuring that future investment in the projects is prudent for customers and stakeholders.
- Using high-quality and relevant science to inform policy and resource decisions that will be made in the relicensing negotiations.
- Enhancing our reputation as a responsible corporate citizen and environmental steward.
- Fostering long-term relationships with agencies, tribes, the local community, and other stakeholders.
- Ensuring public and employee safety.



WEBER HYDROELECTRIC PROJECT

PacifiCorp Statement of Interest (cont.)

Resource-Specific Interests

- Protecting and enhancing native fisheries and other aquatic resources in the Weber River watershed.
- Maintaining high-quality recreational fishing and day-use experiences.
- Respecting cultural values and resources on project lands.