

PREPARED BY:  
"Engineering with Distinction"  
**TEC ELECTRICAL**  
CONSULTANTS, INC.  
SALT LAKE CITY, UTAH  
660 West 700 South Woods Cross, UT 84087 (801) 292-9954

SURVEYING RECORD:		
BY	DM	DATE
SURVEYED:	DM	7/22/2021
DRAWN:	DM	7/26/2021
CHECKED:	GH	8/09/2021
APPROVED:	JC	08/09/2021
REVISION: 2	11/22/2021	
PROJECT NO.: RMP- BEAR LAKE		

PREPARED FOR:  
**PACIFICORP**  
BEAR LAKE FACILITIES  
LOCATED IN BEAR LAKE COUNTY,  
IDAHO

1

OF

1



# Ream-Crocket Canal Intake



REV: 0 | DATE: 10/13/21

BY: DTM | CHK: AAA | APP: AAA

"Engineering with Distinction"

**TECIELECTRICAL**  
**CONSULTANTS, INC.**  
SALT LAKE CITY, UTAH

660 West 700 South Woods Cross, UT 84087 (801) 292-9954

REAM-CROCKET CANAL INTAKE  
LOCATED IN SEC 17, T 14S, R 45E B.M.  
BEAR LAKE COUNTY, IDAHO

SHEET: 1 OF 10


SCALE: 1" = 500'



# STEWART DAM



REV: 0 DATE: 10/13/21 BY: DTM CHK: AAA APP: AAA

 <p><b>ECI ELECTRICAL CONSULTANTS, INC.</b> SALT LAKE CITY, UTAH 660 West 700 South Woods Cross, UT 84087 (801) 292-9954</p>	STEWART DAM LOCATED IN SEC 34, T 13S, R 44E, B.M. BEAR LAKE COUNTY, IDAHO	SHEET: 2 OF 10		SCALE: 1" = 500'



# Outlet Canal Headgates



REV: 0 | DATE: 10/13/21 | BY: DTM | CHK: AAA | APP: AAA

"Engineering with Distinction"



660 West 700 South Woods Cross, UT 84087 (801) 292-9954

OUTLET CANAL HEADGATES  
LOCATED IN SEC. 17, T14S, R44E, LOT 5 B.M.  
BEAR LAKE, IDAHO

SHEET: 3 OF 10

SCALE: 1" = 500'

4E, 15, NWNW, 0

15S44E, 15, NENW, 0

15S44E, 15, NWNE, 0

15S

44E, 15, SWNW, 0

44E, 15, SWNW, 4

15S44E, 15, SENW, 0

15S44E, 15, SENW, 3

4E, 15, SWNW, 0

15S44E, 15, SENW, 0

15S44E, 15, SWNE, 0

15S44E, 15, SWNE, 2

15S44E, 15, SWNE, 0

15S44E, 15, SENE, 0

15S44E, 15, SESW, 0

15S44E, 15, NWSE, 0

15S

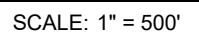
Bear Lake Causeway Inlet  
S 14398 ft W 8010 ft from 28 FMK  
Elevation: 5938 ft

SCALE

FEET

0 250' 500'

BY: DTM	CHK: AAA	APP: AAA
---------	----------	----------





15S44E,9,SESW,0

15S44E,9,SWSE,0

15S44E,9,SESE,0

15S44E,16,NENW,0

15S44E,16,NWNE,0

15S44E,16,NENE,0

15S44E,16,NENW,3

15S44E,16,NWNE,2

15S44E,16,SWNE,0

15S44E,16,SENE,0

15S44E,16,SENE,1

15S44E,16,SENE,0

15S44E,16,SENW,0

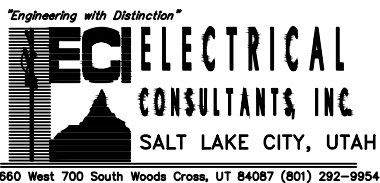
15S44E,16,SWNE,0

15S44E,16,SENE,0

Lifton Pumping Station  
S 13641 ft W 12294 ft from 28 FMK  
Elevation: 5933 ft

SCALE 0 250' 500' FEET

REV: 0	DATE: 10/13/21		BY: DTM	CHK: AAA	APP: AAA
--------	----------------	--	---------	----------	----------



LIFTON PUMPING STATION  
LOCATED IN SEC 16, T 15S, R 44E, B.M.  
BEAR LAKE COUNTY, IDAHO

SHEET: 5 OF 10

SCALE: 1" = 500'



# RAINBOW CANAL HEADGATES

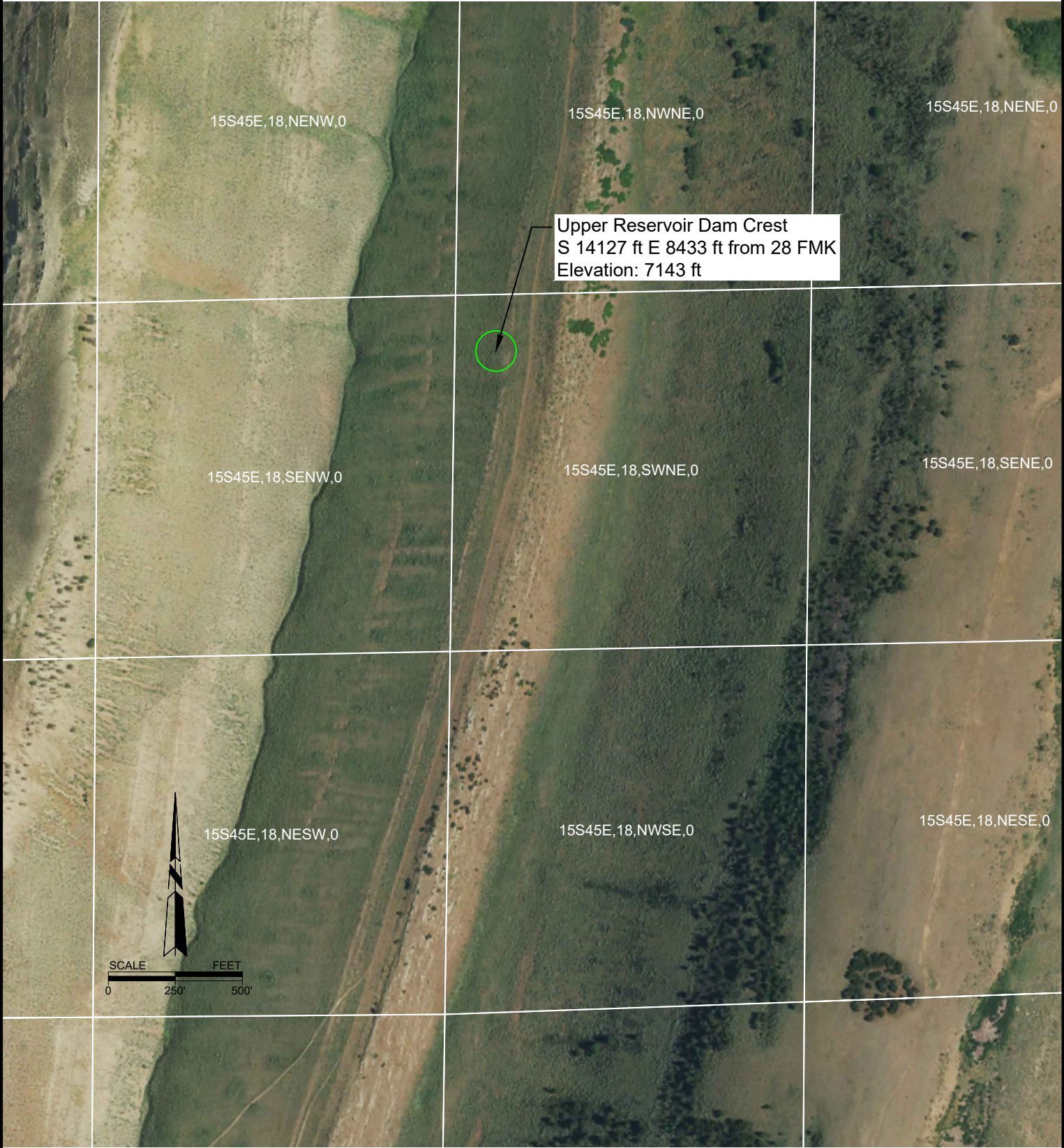


REV: 0 | DATE: 10/13/21

BY: DTM | CHK: AAA | APP: AAA



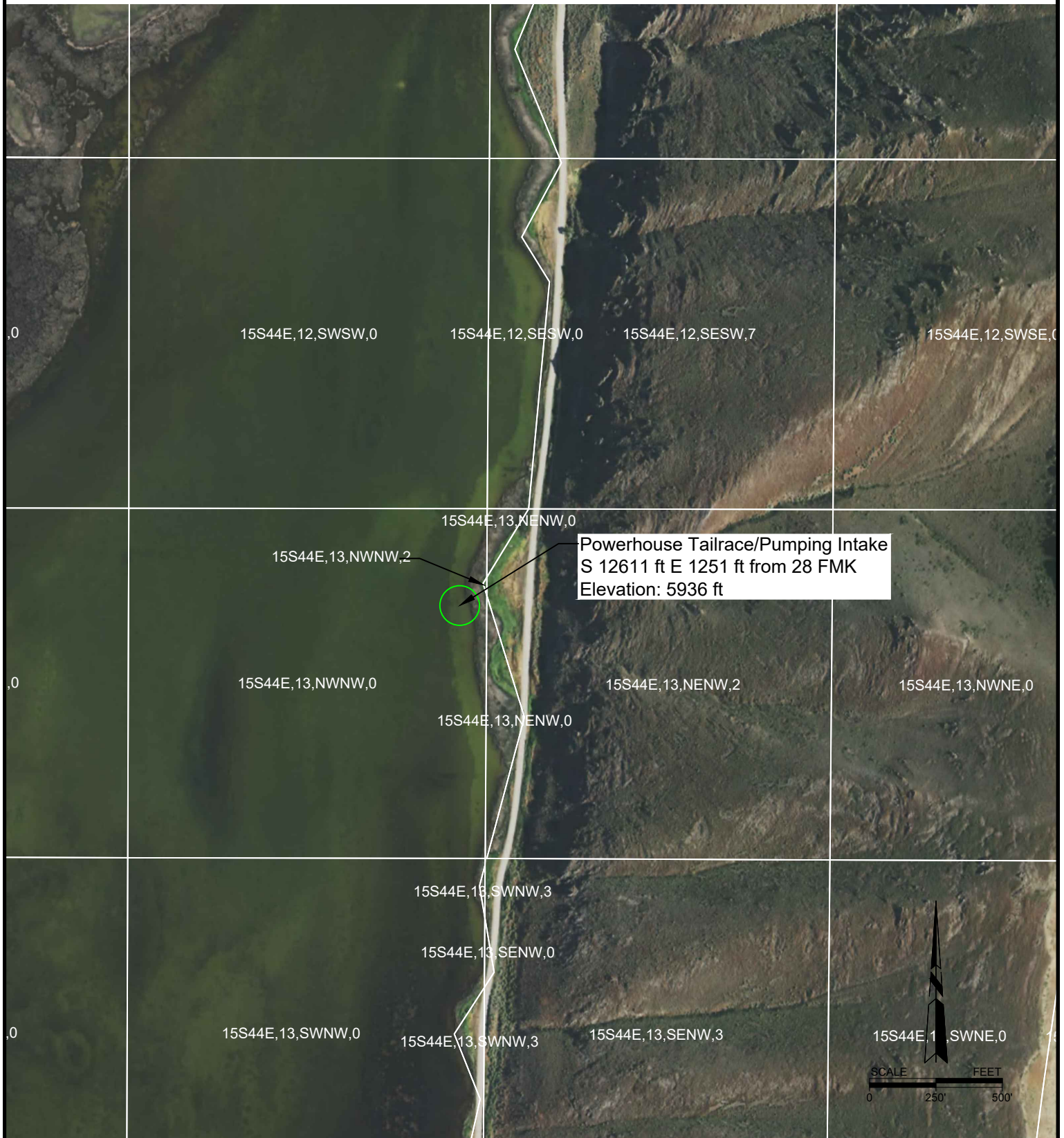
# UPPER RESERVOIR DAM CREST



REV: 0	DATE: 10/13/21	BY: DTM	CHK: AAA	APP: AAA
<div><div><div>Engineering with Distinction™</div><div><div>ECI</div><div>ELECTRICAL CONSULTANTS, INC.</div><div>SALT LAKE CITY, UTAH</div></div><div>660 West 700 South Woods Cross, UT 84087 (801) 292-9954</div></div></div>		UPPER RESERVOIR DAM CREST LOCATED IN SEC 18, T 15S, R 45E, B.M. BEAR LAKE COUNTY, IDAHO		
		SHEET: 7 OF 10		SCALE: 1" = 500'



# POWERHOUSE TAILRACE/PUMPING INTAKE



REV: 0 | DATE: 10/13/21 | BY: DTM | CHK: AAA | APP: AAA

"Engineering with Distinction"

**TECIELECTRICAL**  
**CONSULTANTS, INC.**  
SALT LAKE CITY, UTAH

660 West 700 South Woods Cross, UT 84087 (801) 292-9954

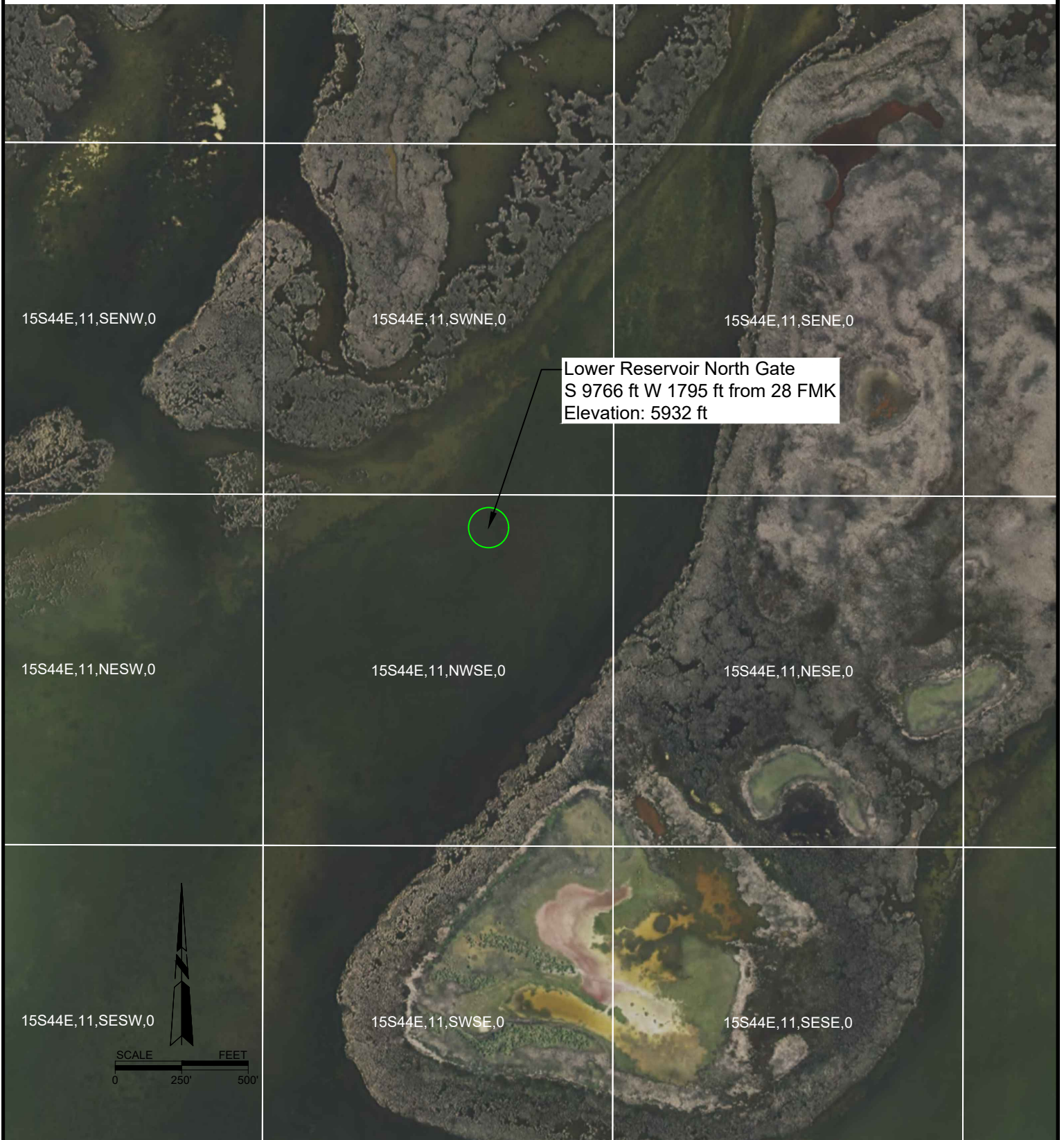
POWERHOUSE TAILRACE/PUMPING INTAKE  
LOCATED IN SEC 13, T 15S, R 44E, B.M.  
BEAR LAKE COUNTY, IDAHO

SHEET: 8 OF 10

SCALE: 1" = 500'



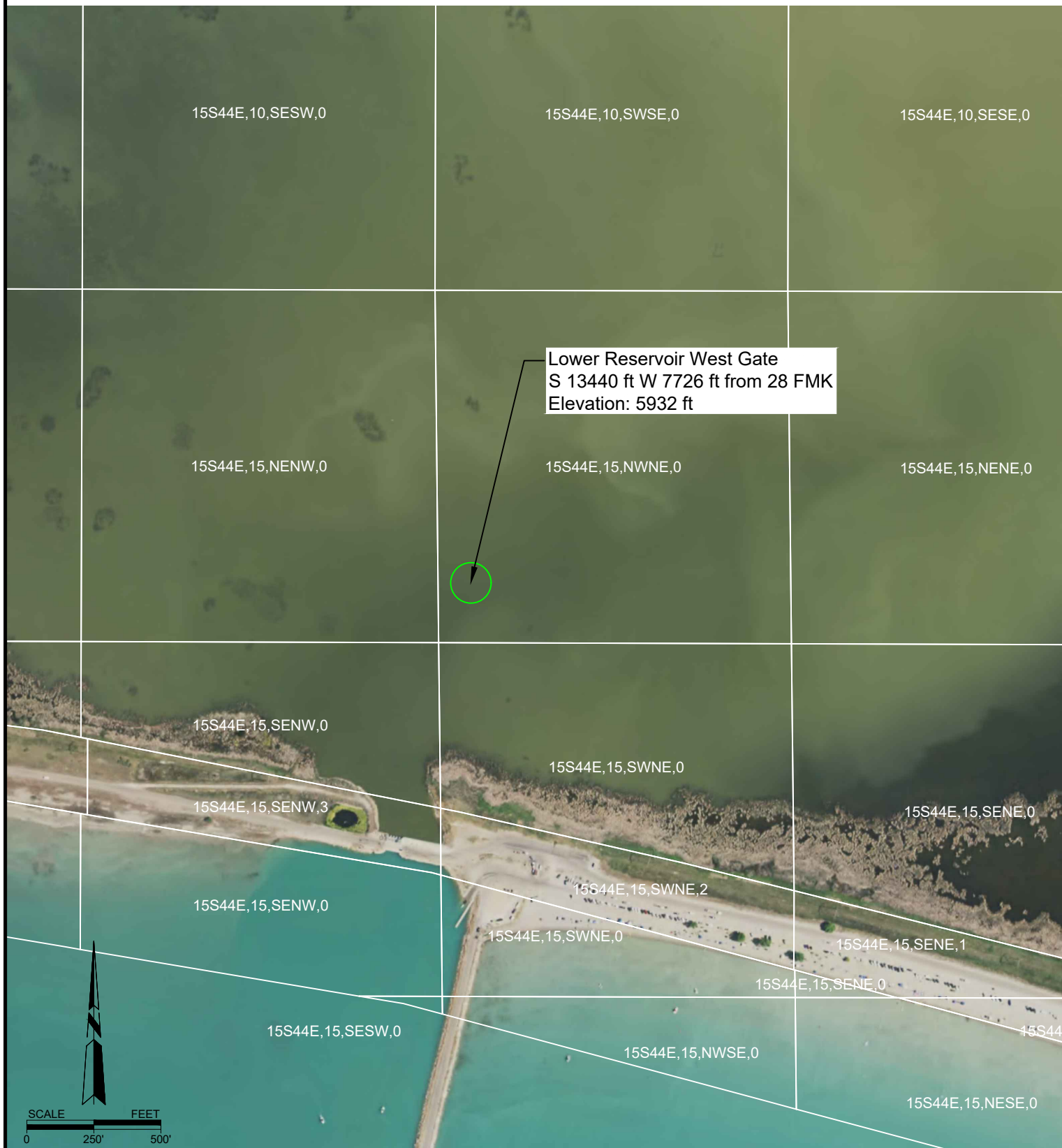
# LOWER RESERVOIR NORTH GATE



REV: 0	DATE: 10/13/21	BY: DTM	CHK: AAA	APP: AAA
--------	----------------	---------	----------	----------



# LOWER RESERVOIR WEST GATE



REV: 0	DATE: 10/13/21
--------	----------------

BY: DTM	CHK: AAA	APP: AAA
---------	----------	----------



LOWER RESERVOIR WEST GATE  
LOCATED IN SEC 15, T 15S, R 44E, B.M.  
BEAR LAKE COUNTY, IDAHO

SHEET:10 OF 10

SCALE: 1" = 500'