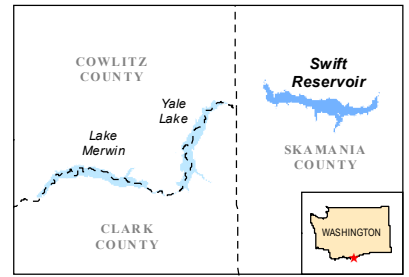
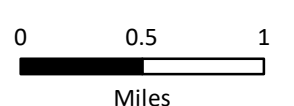


# Lewis River - Swift Reservoir: Dispersed Camping Sites

## Lewis River Hydroelectric Project

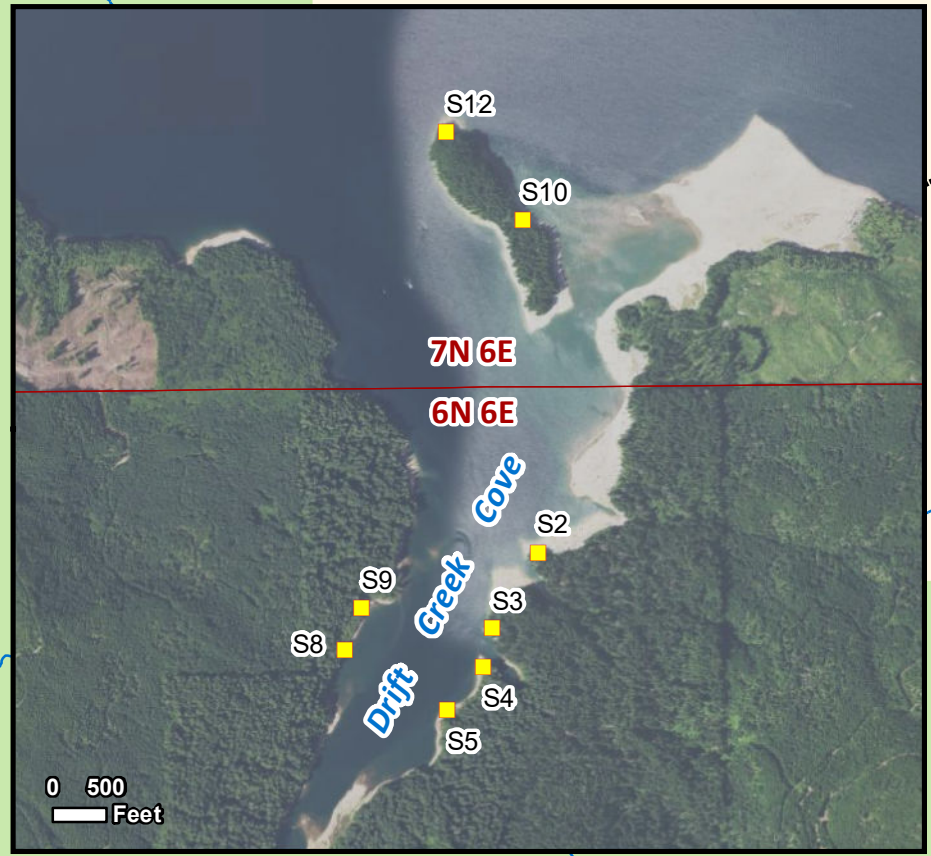
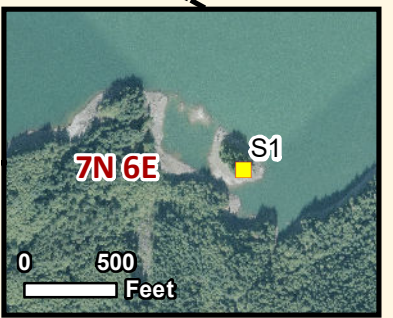
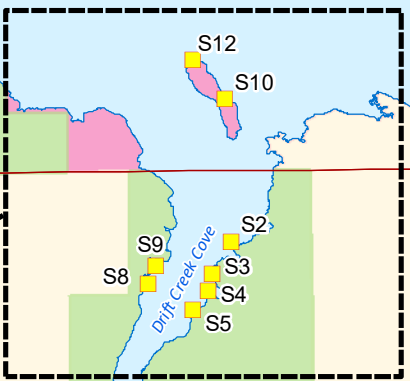
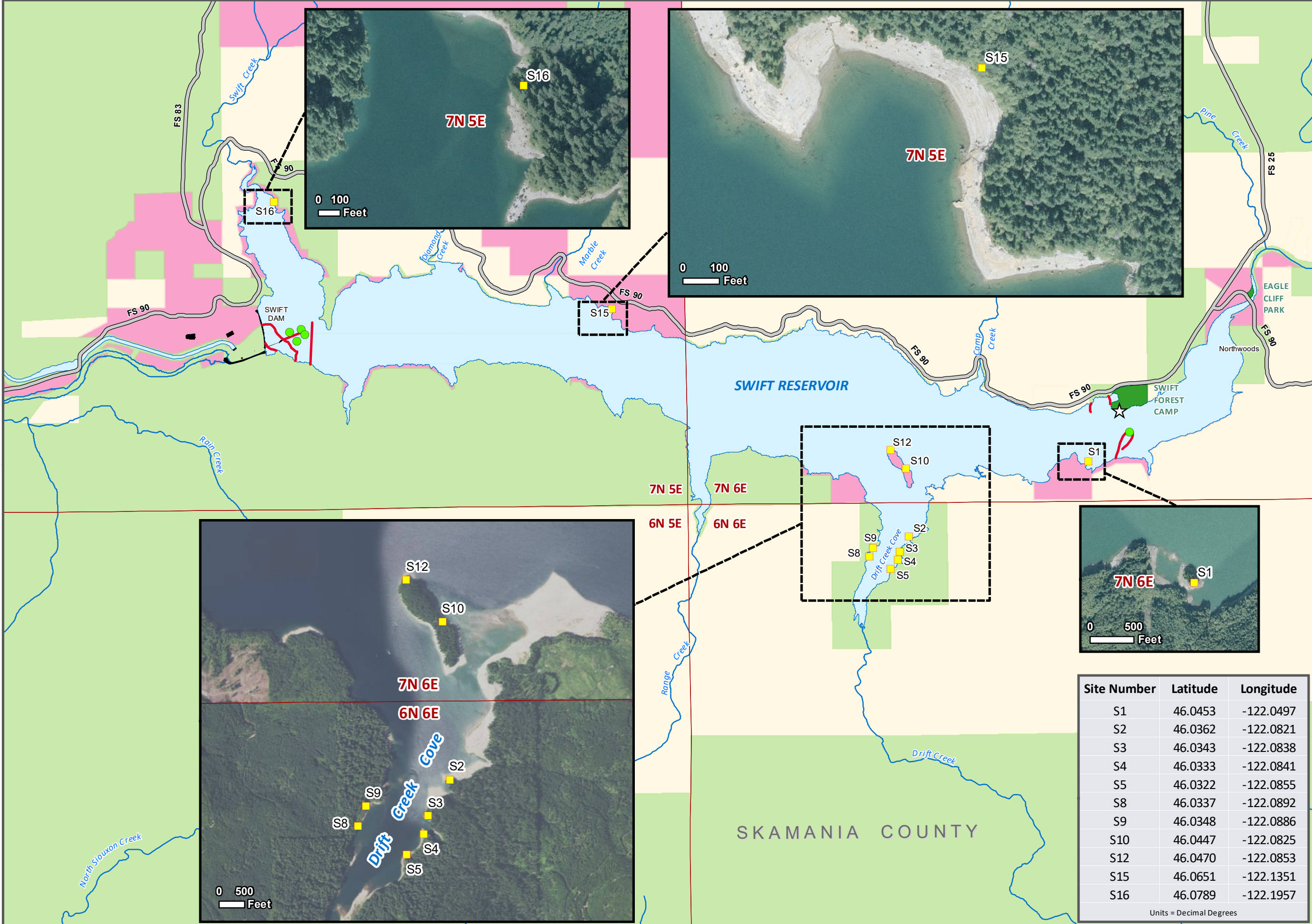


- Dispersed Camp Site
  - ★ Boat Launch
  - Buoy
  - Recreation Area
  - PacifiCorp Facility
  - Non-Passable Boom
  - Major Road
  - Major Stream
  - Water Body
  - Township/Range
- Land Ownership**
- Public
  - Private
  - PacifiCorp



Data is projected in UTM Zone 10, NAD83, meters.  
 PacifiCorp makes no representations or warranties as to the accuracy, completeness or fitness for a particular purpose with respect to the information contained in this map. PacifiCorp shall have no responsibility or liability to any person or entity resulting from the use of any information furnished in this map.

03/24/2021 gisdept@pacifiCorp.com  
 U:\Projects\Hydro\Lewis\Dispersed Camping\Swift Map.mxd



Site Number	Latitude	Longitude
S1	46.0453	-122.0497
S2	46.0362	-122.0821
S3	46.0343	-122.0838
S4	46.0333	-122.0841
S5	46.0322	-122.0855
S8	46.0337	-122.0892
S9	46.0348	-122.0886
S10	46.0447	-122.0825
S12	46.0470	-122.0853
S15	46.0651	-122.1351
S16	46.0789	-122.1957

Units = Decimal Degrees

SKAMANIA COUNTY