

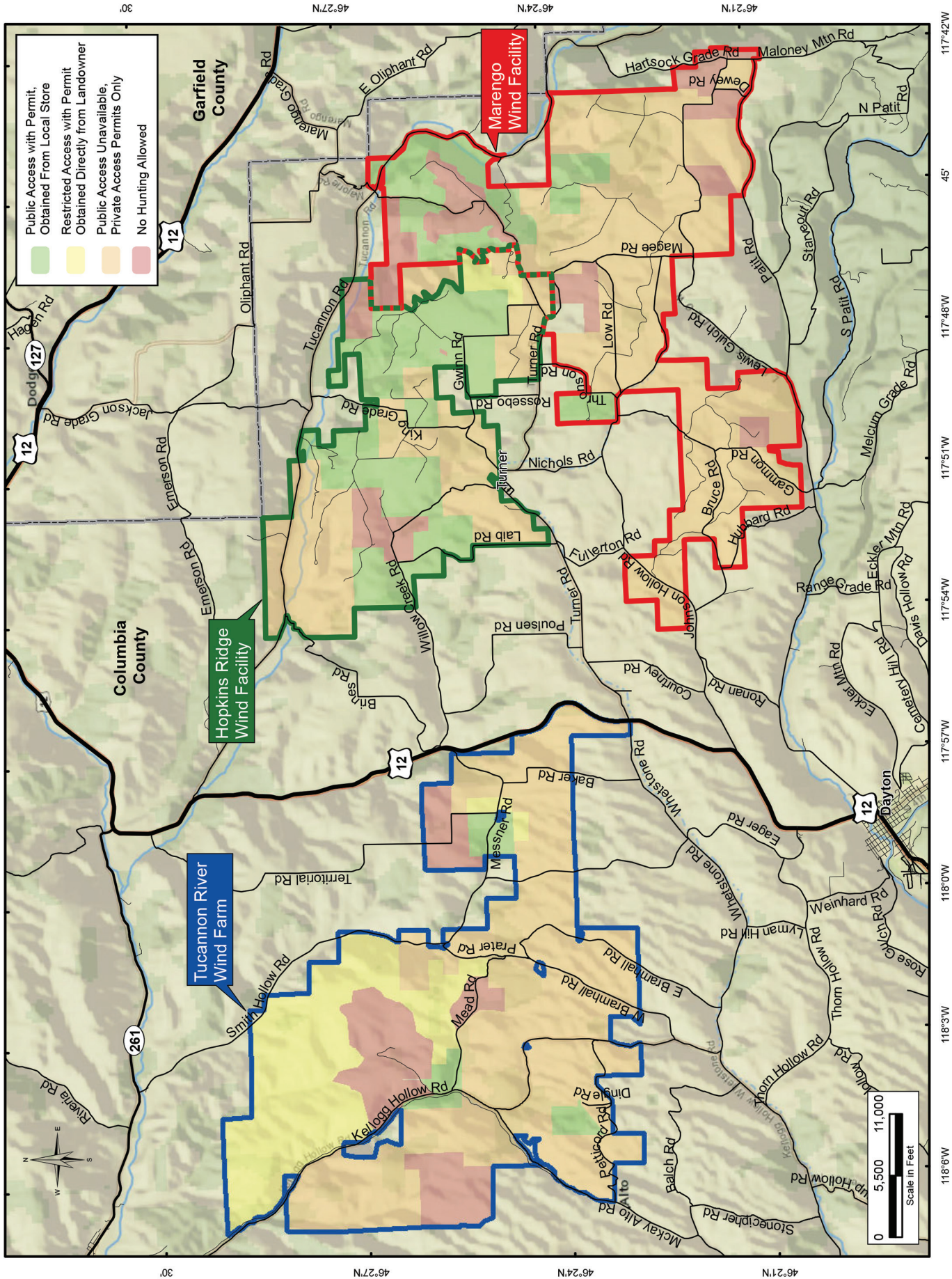
ACCESS RULES

- Marengo Wind Facility
- Hopkins Ridge Wind Facility
- Tucannon River Wind Farm

Violation of any of the rules that follow will result in loss of all access privileges and possibly trespassing violations.

1. **NO HUNTING** during wind turbine construction periods or posted closure periods.
2. **NO ACCESS** of any kind within 300 feet (100 yards) of the wind turbines, buildings or substations.
3. **NO ACCESS** of any kind within 1,000 feet (333 yards) of the wind turbines from the third Sunday of November through the third Sunday of February due to potential icing conditions.
4. **NO POINTING OR SHOOTING OF ANY WEAPON** at a target of any kind with people, wind turbines, overhead power lines, splice boxes, junction boxes, maintenance vehicles, signs, poles, fences, gates, maintenance facilities or substations in your scope of view. NO shooting from vehicles, across roads or from any maintained portion of wind facility access roads.
5. **NO VEHICLE TRAFFIC** of any kind on Lessors' property except on COUNTY roads unless authorized in writing by Lessor. Driving on wind turbine access roads is not allowed. This includes operation of OFF-ROAD VEHICLES (ORVs) or ALL-TERRAIN VEHICLES (ATVs).
6. **NO HORSES OR PACK ANIMALS** are allowed on Lessors' property unless previously authorized in writing by Lessor.
7. **DO NOT BLOCK ACCESS** gates or entrances.
8. All hunters must abide by Washington State Game Rules and Regulations.
9. All access may be canceled on Lessors' land whenever it is deemed necessary by Lessors or Lessees.
10. No overnight camping/parking or outdoor fires on Lessors' property unless previously authorized in writing by the Lessor.
11. **HANGING VEHICLE TAGS** must be clearly displayed and visible from outside of the vehicle while accessing Lessors' property.
12. **YOUR ACCESS PERMISSION AGREEMENT** must be carried on you while hunting within PacifiCorp's Marengo Wind Facility and /or Puget Sound Energy's Hopkins Ridge Wind Facility and/or Portland General Electric's Tucannon River Wind Farm areas.
13. **PLEASE REMOVE YOUR GUT PILES** to prevent attracting scavenging raptors to the wind farm area.

To help ensure continued access to these lands, please report any violations of rules or laws to the Columbia County Sheriff's Office 509-382-1100, OR if an emergency, please dial 911.



PacifiCorp makes no representations or warranties as to the accuracy, completeness or fitness for a particular purpose with respect to the information contained in this map. PacifiCorp shall have no responsibility or liability to any person or entity resulting from the use of any information in this map.

ACCESS RULES AND MAP

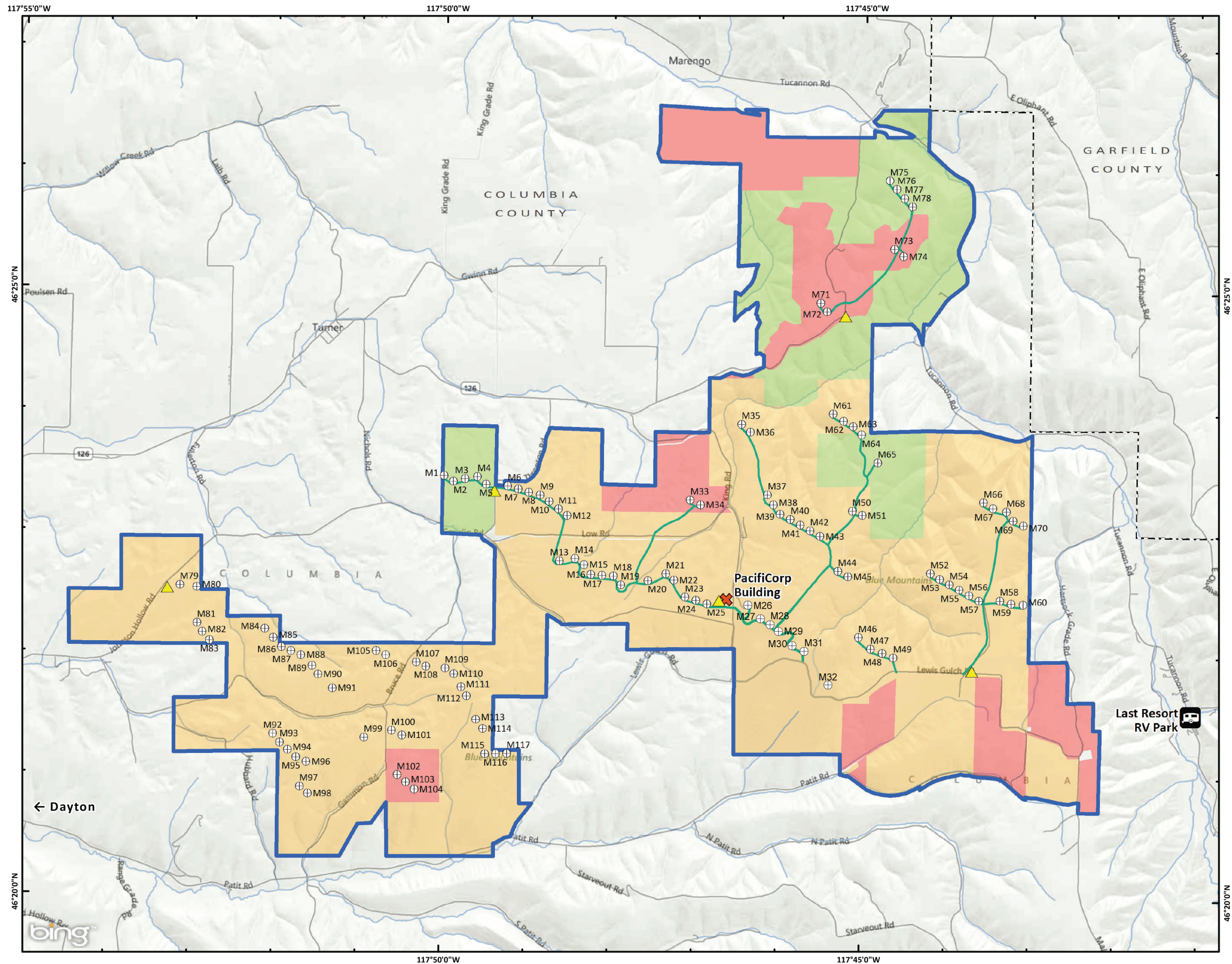
- Marengo Wind Facility
- Hopkins Ridge Wind Facility
- Tucannon River Wind Farm



LOCATION DETAILS

PacifiCorp's Marengo Wind Facility, Puget Sound Energy's Hopkins Ridge Wind Facility and Portland General Electric's Tucannon River Wind Farm lie on nearly 50,000 acres of farm and rangeland between Dayton and the Tucannon River. The utilities lease the land from private landowners and the state of Washington. While much of this land is open to public access, special rules are in place to ensure the safety of visitors, hunters, local residents and wind-project workers. These rules, summarized in this pamphlet, are also designed to prevent damage to the wind farms' equipment.





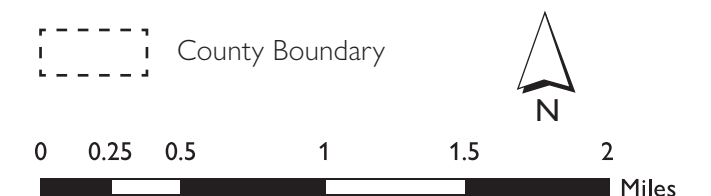
Marengo Wind Facility Hunting Access Map

For additional information contact PacifiCorp at 509-435-8723 or visit pacificorp.com/hunting.



- Public Access with Permit, obtained from local store
- Public Access with Permit, obtained directly from landowner
- Public Access Unavailable, private access permits only
- No Hunting Allowed
- Marengo Boundary

- Last Resort RV Park
- PacifiCorp O&M Building
- Sign
- Turbines
- Turbine Access Roads – no public access
- Road
- County Boundary



GIS SUPPORT SERVICES
Solutions Group
gisdept@pacificorp.com

PacifiCorp makes no representations or warranties as to the accuracy, completeness or fitness for a particular purpose with respect to the information contained in this map. PacifiCorp shall have no responsibility or liability to any person or entity resulting from the use of any information in this map.

Data is projected in UTM Zone 11, NAD83, meters.