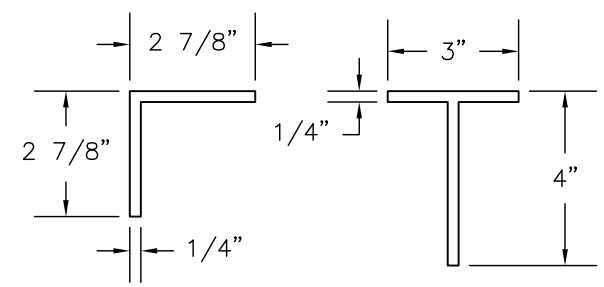


PLAN VIEW

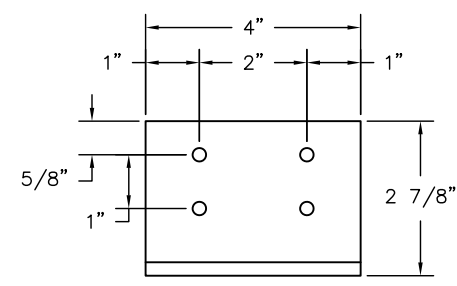


HEAVY DUTY EXTRUSION USED ON THIS BUILDING

DURALUMINUM MODEL 120120SW BUILDING NOTES:

- ① — 100 AMP, SINGLE PHASE 12 SPACE LOAD CENTER w/ MAIN BREAKER
- ② — 115V DUPLEX OUTLET
- ②b — 115V GFI DUPLEX OUTLET
- ③ — 230V 30AMP SINGLE OUTLET
- ④ — 4' SURFACE MOUNTED LED WRAPAROUND LIGHT w/ SWITCH
- ⑤ — EXTERIOR SINGLE HEAD LED SPOT/FLOOD LIGHT w/ SWITCH
- ⑥ — 230V, 20,000 C / 13,000 H BTU THRU WALL HVAC UNIT
- ⑦ — 240V 4,800 WATT WALL MOUNTED HEATER (WIRED DIRECT)
- ⑧ — DATA/PHONE JACK w/ CONDUIT & PULL WIRE TO ACCESS CUTOUT
- ⑨ — 4"x4" J-BOX w/ CONDUIT & PULL WIRE TO ACCESS CUTOUT
- ⑩ — 22" DEEP PAINTED STEEL SHELF

- * EXTERIOR STANDING SEAM ROOF w/ 24" OVERHANG, GUTTERS & DOWNSPOUTS
- * CRANE LIFTING POCKETS IN BASEFRAME
- * 90" INTERIOR HEIGHT
- * 3070 HEAVY DUTY ALUMINUM SWING DOOR w/ HALF GLASS, ADA CLOSER, CHECK CHAIN & LEVER LOCKSET
- * GLAZING: 5/8" CLEAR INSULATED TEMPERED GLASS
- * INSULATION: WALLS R-10, FLOOR R-19, CEILING R-30
- * STANDING SEAM ROOF COLOR: ADVISE ROOF COLOR
- * INTERIOR PANEL FINISH: DIAMOND EMBOSSED ALUMINUM
- * ALUMINUM TREAD PLATE FLOOR
- * STANDARD CONDUIT ACCESS CUTOUT



ANCHOR TAB DETAIL

RECOMMENDED THAT EACH ANCHOR TAB BE SECURED TO MEZZANINE w/ 1/2"Ø GR. 5 BOLT.
 SERVICE (ASD) LOADS TO MEZZANINE AT EACH ANCHOR BOLT
 T = 0.65 KIP
 V = 0.30 KIP

PROJECT: FULLER ENTERPRISES CONST.

208 DELMAR

MILLS, WY 82644

CUSTOMER: FULLER ENTERPRISES

SYSTEM: DURALUMINUM

MODEL: 120120SW

PORTA-KING
 BUILDING SYSTEMS

4133 SHORELINE DRIVE
 EARTH CITY, MO 63045
 1-800-456-5464
 www.portaking.com

ESTIMATE:

ORDER: PK34198

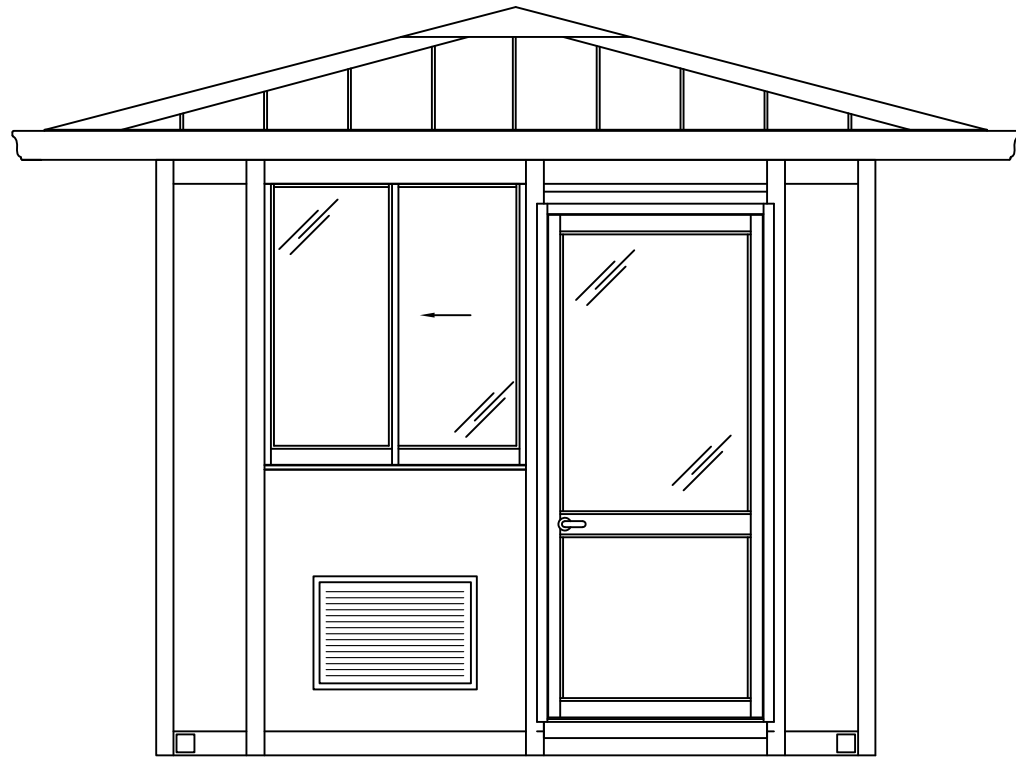
JOB:

DATE: 3-30-21

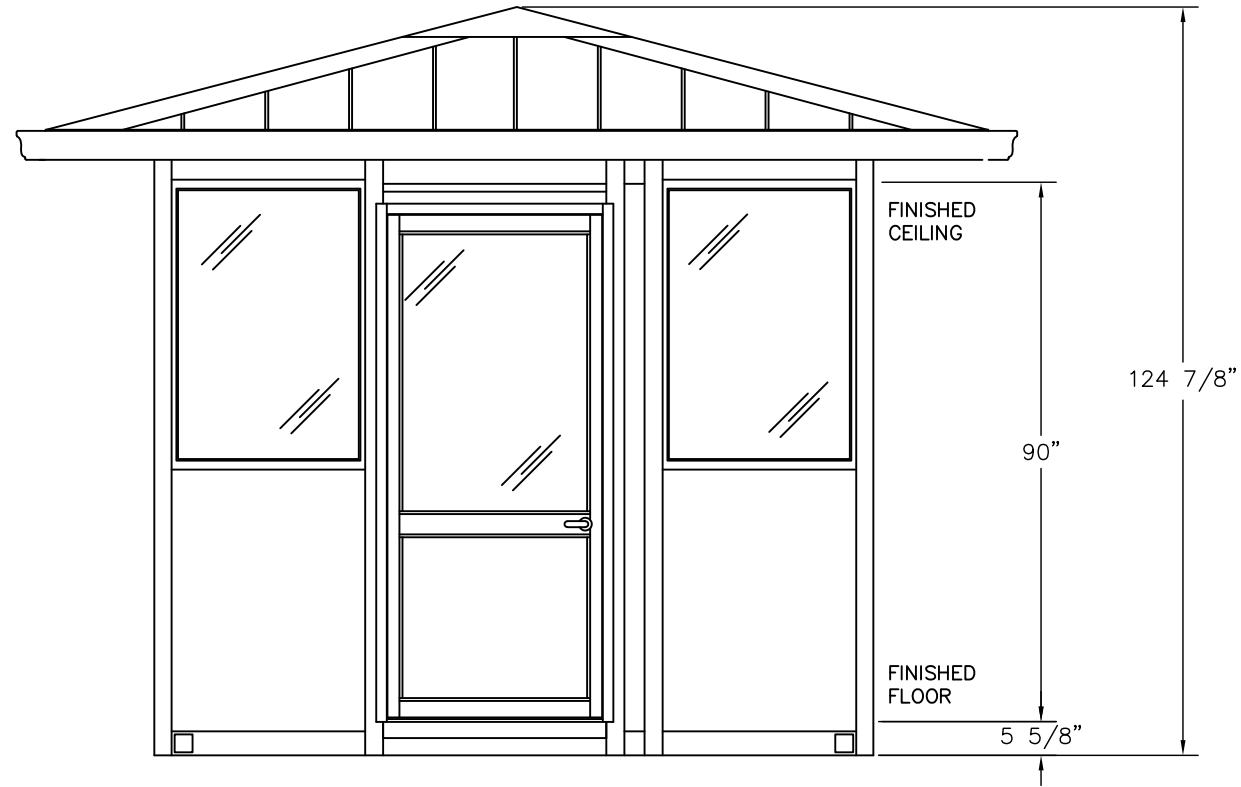
REVISED:

DRAWN BY: DGR

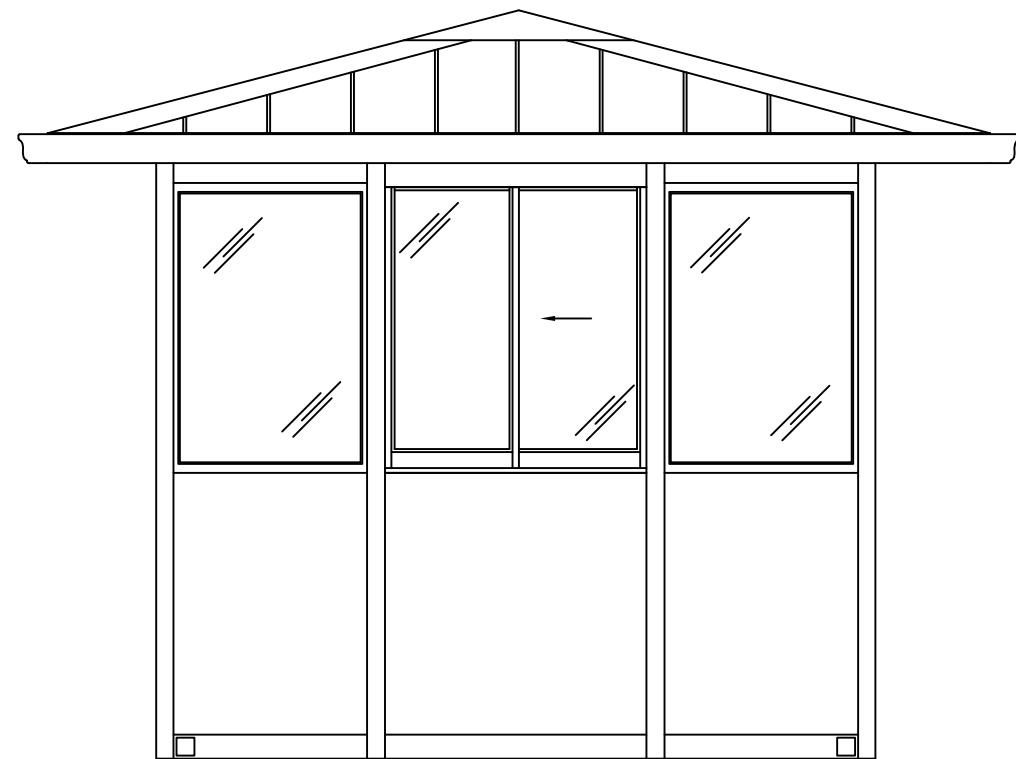
SHEET 1 OF 6



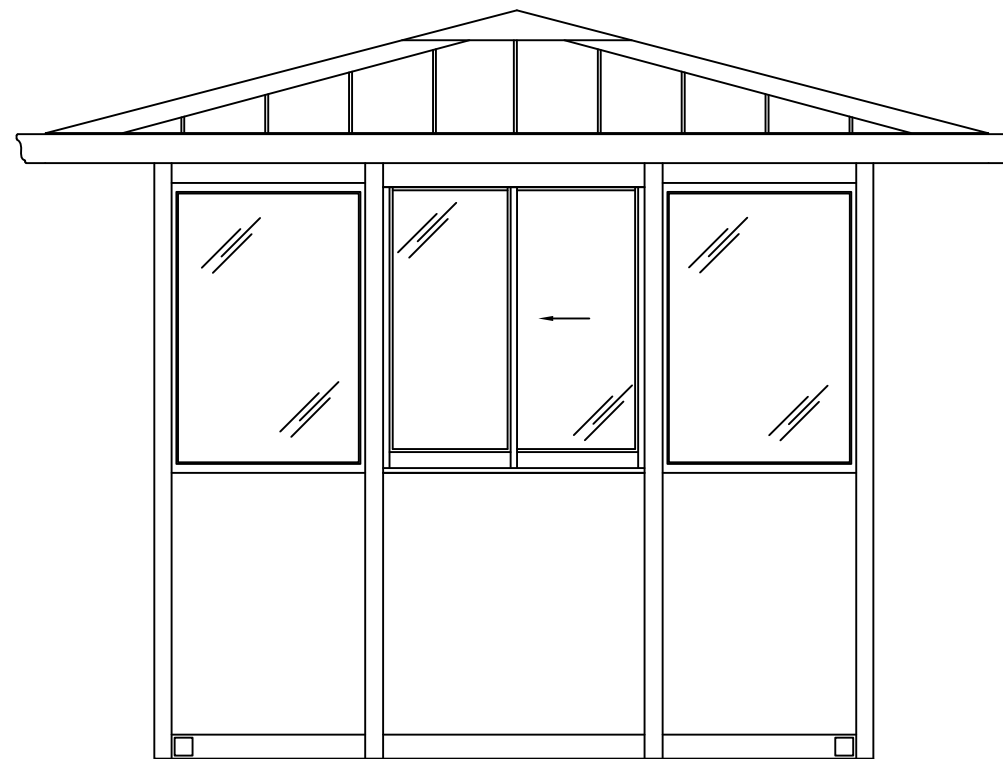
ELEVATION A



ELEVATION B



ELEVATION C



ELEVATION D

PROJECT:
FULLER ENTERPRISES CONST.
208 DELMAR
MILLS, WY 82644

CUSTOMER:
FULLER ENTERPRISES
SYSTEM:
DURALUMINIUM
MODEL:
120120SW

PORTA-KING
BUILDING SYSTEMS
4133 SHORELINE DRIVE
EARTH CITY, MO 63045
1-800-456-5464
www.portaking.com

ESTIMATE:

ORDER: PK34198

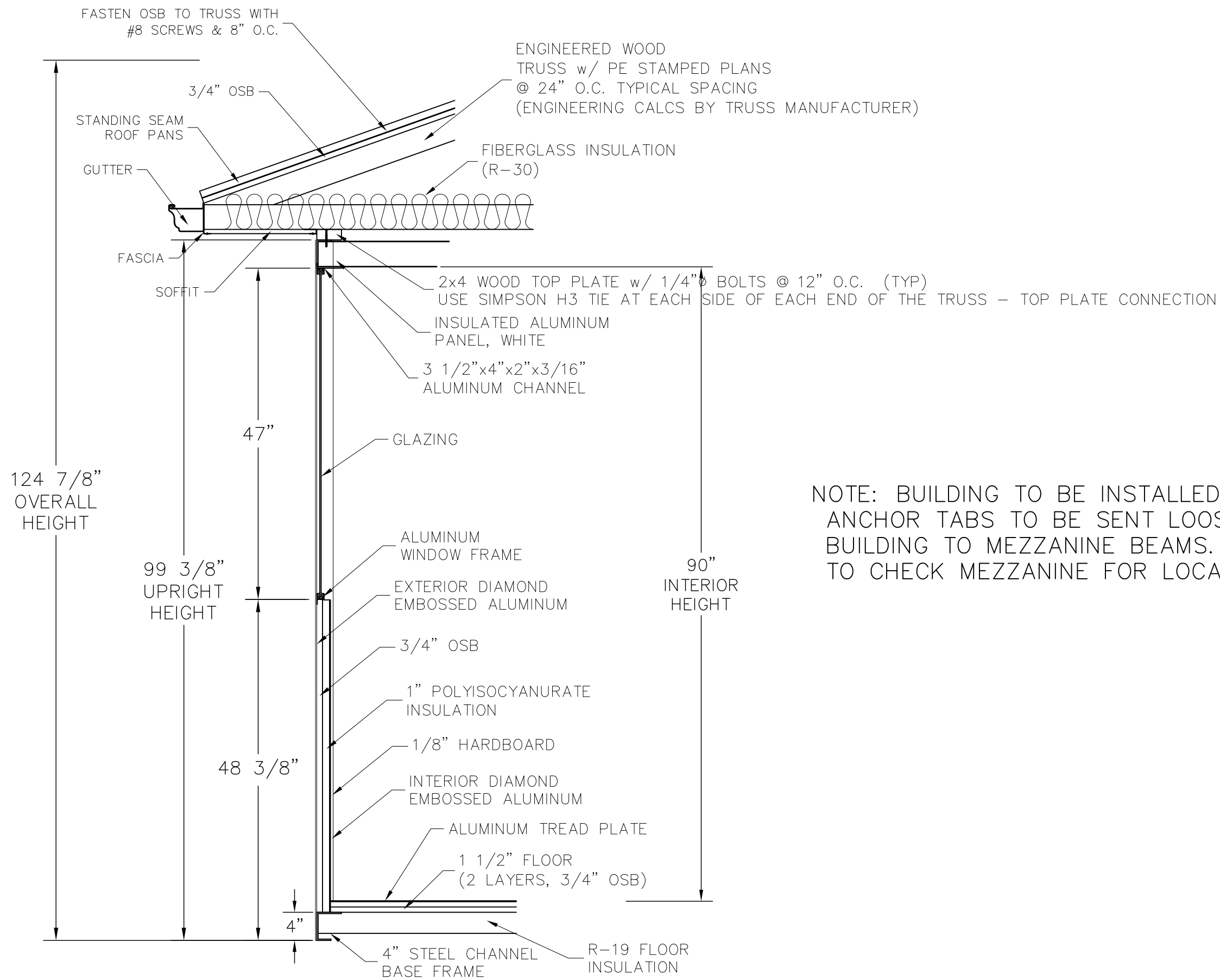
JOB:

DATE: 3-30-21

REVISED:

DRAWN BY: DGR

SHEET 2 OF 6



NOTE: BUILDING TO BE INSTALLED ON MEZZANINE. ANCHOR TABS TO BE SENT LOOSE, TO ATTACH BUILDING TO MEZZANINE BEAMS. MEZZANINE ENGINEER TO CHECK MEZZANINE FOR LOCAL EFFECTS.

WALL SECTION DETAIL

PROJECT: FULLER ENTERPRISES CONST.

208 DELMAR

MILLS, WY 82644

CUSTOMER: FULLER ENTERPRISES

SYSTEM: DURALUMINUM

MODEL: 120120SW

PORTA-KING
BUILDING SYSTEMS

4133 SHORELINE DRIVE
EARTH CITY, MO 63045
1-800-456-5464
www.portaking.com

ESTIMATE:

ORDER: PK34198

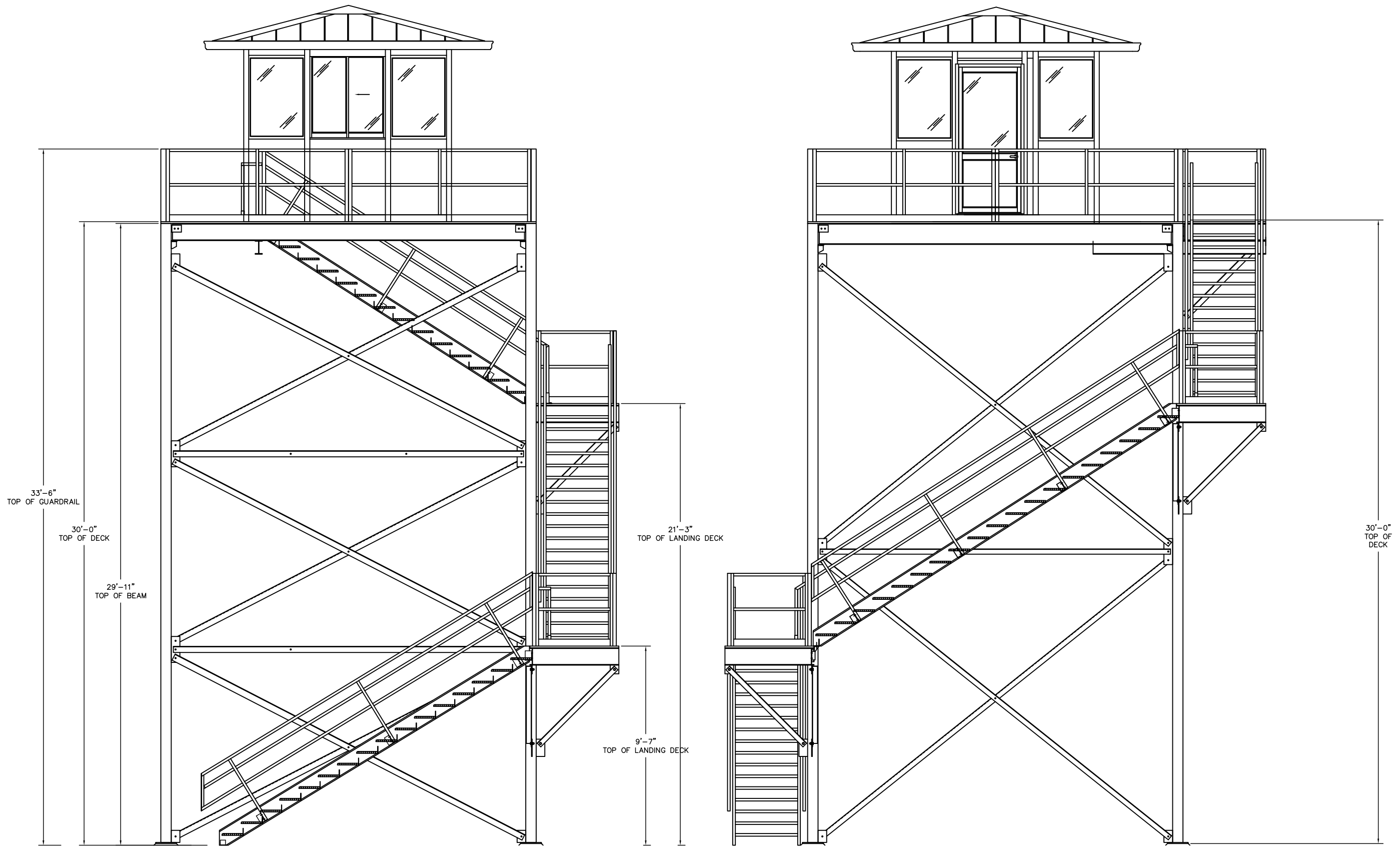
JOB:

DATE: 3-30-21

REVISED:

DRAWN BY: DGR

SHEET 3 OF 6



ELEVATION C w/ MEZZANINE

ELEVATION B w/ MEZZANINE

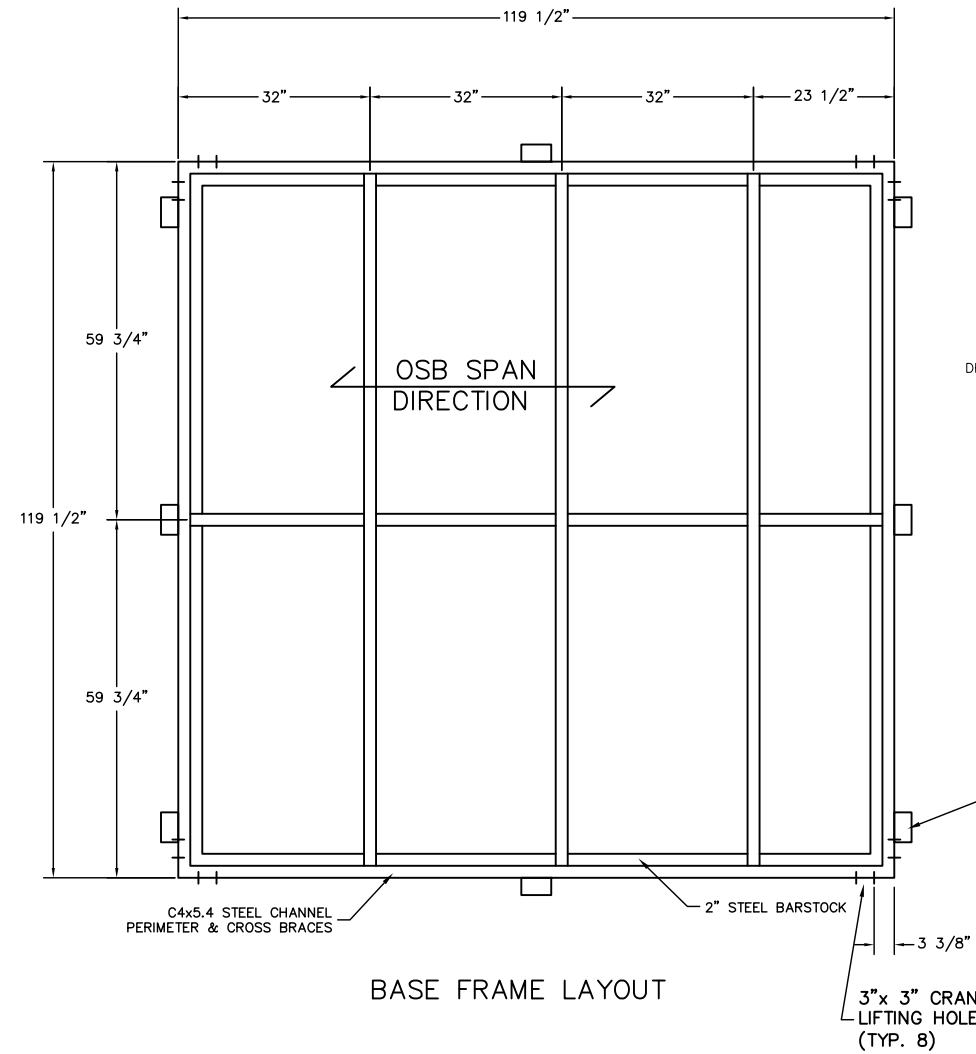
MEZZANINE AND STAIR
 SEE PK-STRUCTURE DRAWINGS FOR DETAILS
 MEZZANINE, STAIR, AND GUARDRAIL NOT CHECKED BY LARSON ENGINEERING.

PROJECT:
 FULLER ENTERPRISES CONST.
 208 DELMAR
 MILLS, WY 82644

CUSTOMER:
 FULLER ENTERPRISES
 SYSTEM:
 DURALUMINUM
 MODEL:
 120120SW

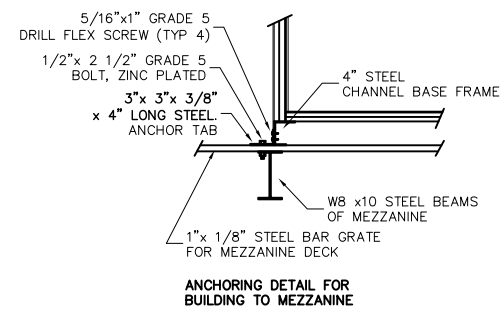
PORTA-KING
 BUILDING SYSTEMS
 4133 SHORELINE DRIVE
 EARTH CITY, MO 63045
 1-800-456-5464
 www.portaking.com

ESTIMATE:
 ORDER: PK34198
 JOB:
 DATE: 3-30-21
 REVISED:
 DRAWN BY: DGR
 SHEET 4 OF 6

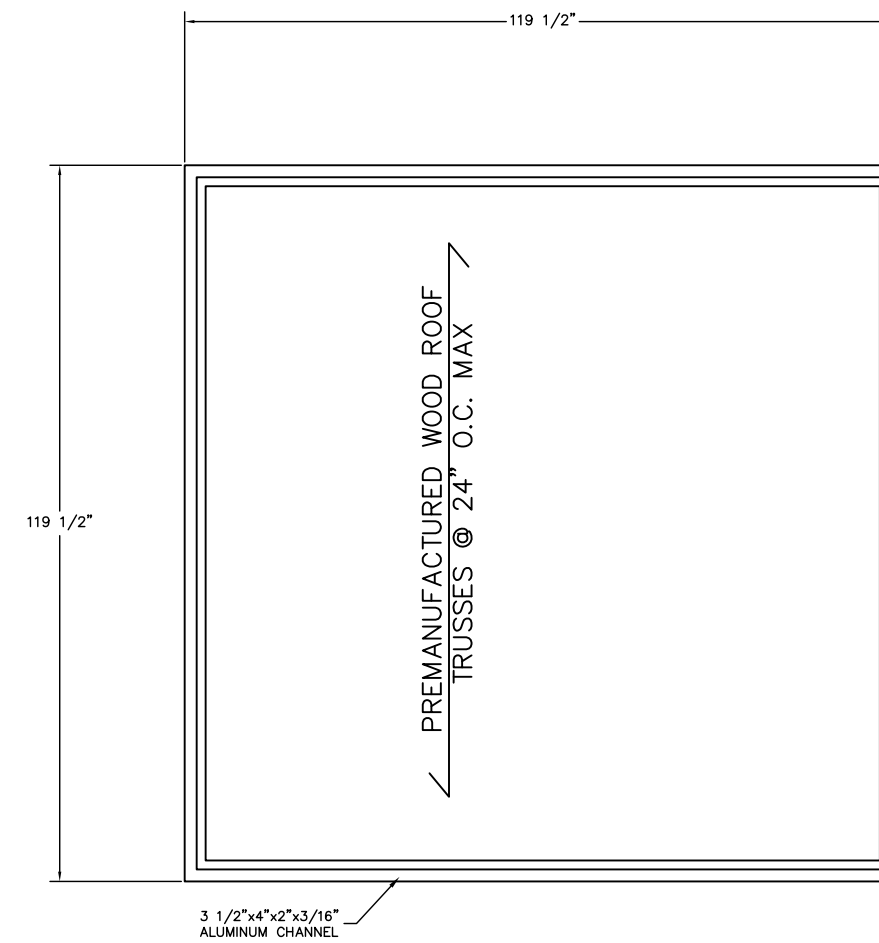


BASE FRAME LAYOUT

NOTE: BUILDING TO BE INSTALLED ON MEZZANINE. ANCHOR TABS TO BE SENT LOOSE, TO ATTACH BUILDING TO MEZZANINE BEAMS. MEZZANINE ENGINEER TO CHECK MEZZANINE FRAMING FOR LOCAL EFFECTS.



3" x 3" x 3/8" x 4" LONG STEEL ANCHOR TAB ATTACH TO BUILDING BASE W/(4) 5/16" GR. 5 TEK SCREWS AND THRU BAR GRATE TO MEZZ. BEAMS W/(1) 1/2"x2 1/2" GRADE 5 BOLT (TYP. AT (8) ANCHOR TABS) (SHIPS LOOSE)



ROOF FRAME LAYOUT

PROJECT: FULLER ENTERPRISES CONST.
208 DELMAR
MILLS, WY 82644

CUSTOMER: FULLER ENTERPRISES
SYSTEM: DURALUMINUM
MODEL: 120120SW

PORTA-KING
BUILDING SYSTEMS
4133 SHORELINE DRIVE
EARTH CITY, MO 63045
1-800-456-5464
www.portaking.com

ESTIMATE:
ORDER: PK34198
JOB:
DATE: 3-30-21
REVISED:
DRAWN BY: DGR
SHEET 5 OF 6

DURALUMINUM BUILDING FRAMING NOTES :

BASE FRAMES ARE CONSTRUCTED USING C4x5.4 STEEL CHANNEL

ROOF FRAMES ARE CONSTRUCTED USING 6063 T-6 3/16" ALUMINUM, PERIMETER CHANNEL 3 1/2"x4"x2"

BASE FRAMES AND ROOF FRAMES ARE ALL CONTINUOUS WELDED AT ALL CORNERS AND CROSS BRACE CONNECTIONS.

VERTICAL STRUCTURAL MEMBERS, 6005 T-6, 1/4" ALUMINUM CORNERS 2 7/8"x 2 7/8" AND TEES 3"x 4".

ASSEMBLY NOTES :

WALL PANELS, WINDOWS, AND DOORS ARE INSTALLED BETWEEN FRAMING MEMBERS.

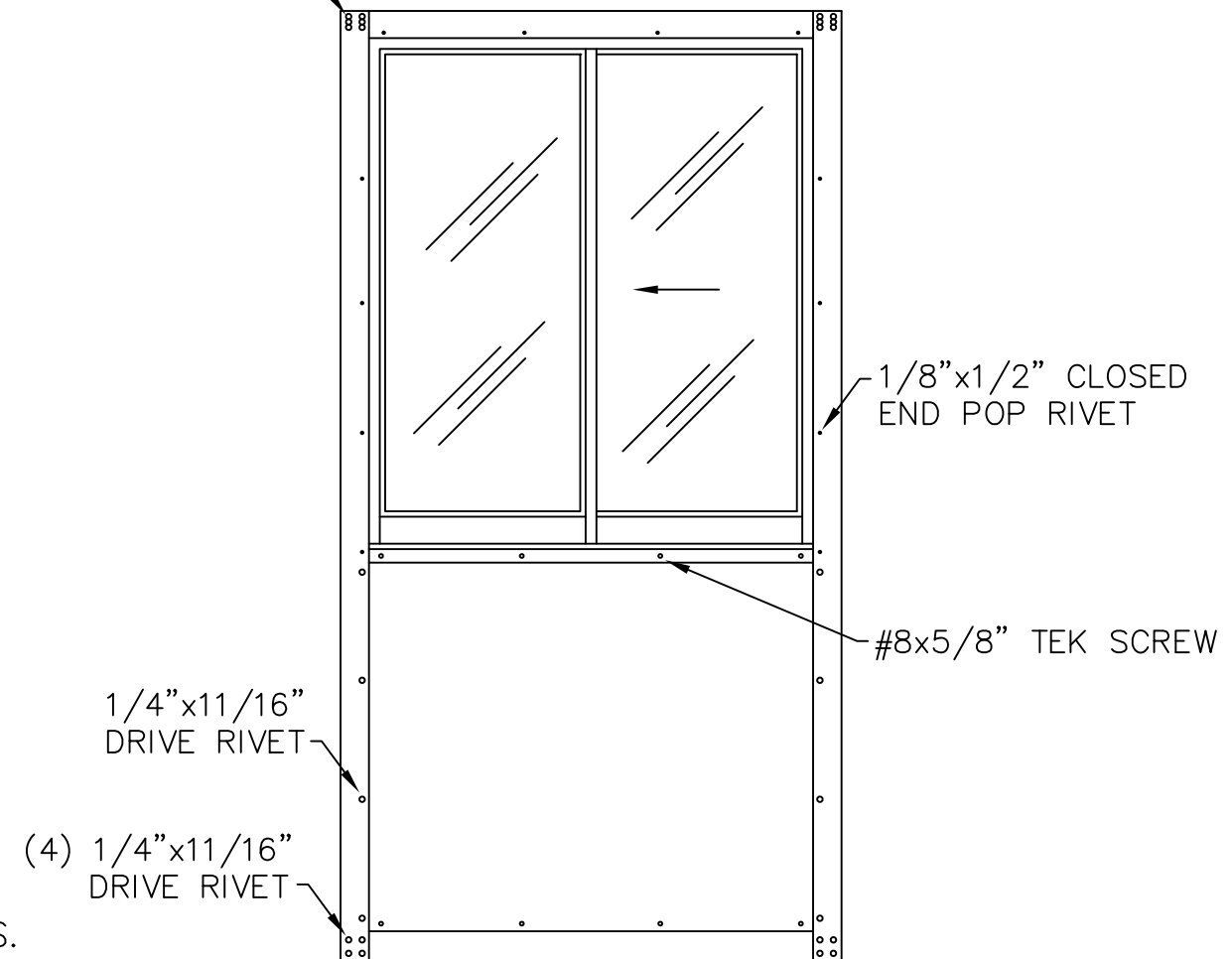
WINDOWS, FIXED AND SLIDING, ARE ATTACHED TO FRAMING MEMBERS BY 1/8"DIA.x 1/2" CLOSED END POP RIVETS, 12"o.c.

WALL PANELS ARE ATTACHED TO FRAMING MEMBERS BY 1/4"DIA.x 11/16" DRIVE RIVETS, 12"o.c., AND ATTACHED TO WINDOWS BY #8 x 5/8" TEK SCREWS, 12"o.c.

DOOR FRAMES ARE ATTACHED TO FRAMING MEMBERS BY 3/16"DIA.x 5/8" POP RIVETS, 12"o.c.

VERTICAL FRAMING MEMBERS ARE ATTACHED TO THE BASE FRAME AND ROOF FRAME BY (6) 5/16" GRADE 5 DRILL FLEX SCREWS.

(6) 5/16" GRADE 5
DRILL FLEX SCREW



TYPICAL ELEVATION

PROJECT:
FULLER ENTERPRISES CONST.

208 DELMAR

MILLS, WY 82644

CUSTOMER:
FULLER ENTERPRISES

SYSTEM:
DURALUMINUM

MODEL:
120120SW

PORTA-KING
BUILDING SYSTEMS
4133 SHORELINE DRIVE
EARTH CITY, MO 63045
1-800-456-5464
www.portaking.com

ESTIMATE:

ORDER: PK34198

JOB:

DATE: 3-30-21

REVISED:

DRAWN BY: DGR

SHEET 6 OF 6

APPROVAL DRAWINGS ARE FOR A 18'-0 3/4" W X 30'-0" H X 18'-0 3/4" L TOWER STRUCTURES

DEALER: FULLER ENTERPRISES CONSTRUCTION
JOB NAME: PACIFICORP - CEDAR SPRINGS WIND PLANT
LOCATIONS: 460 SIXTEEN MILE ROAD
 DOUGLAS, WY 82633

NOTE: THESE DRAWINGS ARE FOR LAYOUT APPROVAL ONLY, **NOT FOR PERMIT SUBMITTAL**. ALL FIELD DIMENSIONS AND SITE CONDITIONS ARE THE RESPONSIBILITY OF THE CUSTOMER. IF P.E. SEALED DRAWINGS AND CALCULATIONS HAVE BEEN PURCHASED, THEY WILL NOT BE PRODUCED UNTIL AFTER LAYOUT IS APPROVED.

APPROVAL SIGNATURE REQUIRED (APPROVAL IS FOR ALL PAGES IN DRAWING SET)

- APPROVED AS SHOWN
 APPROVED AS NOTED
 (NOTED CHANGES MAY CAUSE REVISION PRIOR TO FABRICATION)
 REVISE AND RESUBMIT PRIOR TO FABRICATION

AUTHORIZED SIGNATURE: 

DATE: 4/5/2021

IMPORTANT MANUFACTURER'S DISCLAIMERS

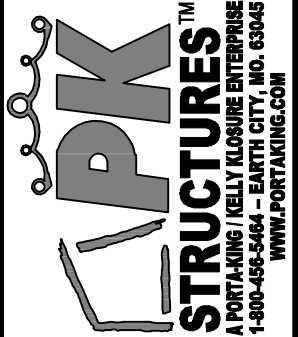
THE MANUFACTURER HAS DESIGNED AND ENGINEERED THIS SYSTEM SPECIFICALLY, AS STATED IN THE TOWER NOTES SECTION. VARIATIONS AND/OR MODIFICATIONS TO THE SYSTEM OR COMPONENTS WILL VOID AND NULLIFY ANY AND ALL WARRANTIES, BOTH WRITTEN AND/OR IMPLIED, AND LIABILITY FOR DEFECTS IN THIS SYSTEM AND ITS COMPONENTS. MANUFACTURER FURTHER ACCEPTS NO RESPONSIBILITY AND/OR LIABILITY FOR OBTAINING OR MAINTAINING AN LOCAL, REGIONAL OR NATIONAL BUILDING PERMITS, INSPECTIONS OR DOCUMENTS THAT MAY BE REQUIRED.

THIS TOWER HAS (OR WILL BE) ENGINEERED STRUCTURALLY ONLY. IT IS THE RESPONSIBILITY OF THE BUYER TO VERIFY THAT WHEN THIS TOWER IS INSTALLED, THE BUILDING THAT HOUSES IT COMPLIES WITH LOCAL SAFETY CODES WHICH ADDRESS INGRESS, EGRESS, FIRE RATINGS, SPRINKLERS, ETC.

ALL INSPECTIONS TO BE ARRANGED BY AND PAID FOR BY OTHERS AND NOT PK STRUCTURES. PROJECTS THAT ARE NOT APPROVED FOR PRODUCTION WITHIN 30 DAYS FROM DATE ORDER WAS PLACED MAY BE SUBJECT TO PRICE ESCALATION BASED ON FLUCTUATIONS IN THE CURRENT STEEL MARKET.

TOWER NOTES

- 1) STRUCTURE:
 - A) TOWER LOCATIONS: 460 SIXTEEN MILE ROAD - DOUGLAS, WY 82633
 - B) THE STRUCTURE OF THIS TOWER HAS BEEN DESIGNED IN CONFORMANCE WITH THE APPLICABLE BUILDING CODE: 2018 INTERNATIONAL BUILDING CODE (2018 IBC) USING THE FOLLOWING LOADS:
 - a) LIVE LOAD = 100 PSF W/ DEFLECTION LESS THAN L/360 (18'-0 3/4" X 18'-0 3/4" AREA)
 - b) LIVE LOAD = 100 PSF W/ DEFLECTION LESS THAN L/360 (LANDINGS)
 - c) DEAD LOAD = 15 PSF
 - d) POINT LOADING: TOWER FRAMING HAS NOT BEEN DESIGNED TO SUPPORT HEAVY RACK POST/POINT LOADS. POINT LOADS UP TO 355 LBS. MAY BE SUPPORTED WITHOUT FURTHER INVESTIGATION, IF THE POSTS ARE ORIENTED SUCH THAT THE SPACING OF THE POSTS ARE PERPENDICULAR TO THE DECK SPAN. CONTACT PK STRUCTURES IF ANTICIPATED LOADS ARE GREATER THEN 355 LBS. OR IF QUESTIONS ARISE REGARDING POST LAYOUT.
 - e) MAXIMUM WHEEL LOADS = 0 LBS.
 - f) SEISMIC: S_s = TBD S₁ = TBD F_a = TBD F_v = TBD SDS = TBD SD1 = TBD SDC = "B" SITE CAT. = D
 - g) WIND LOAD: TBD MPH - EXPOSURE C
 - h) GROUND SNOW LOAD: 20 PSF, ROOF LIVE LOAD = 20 PSF
- 2) CODE DATA:
 - A) OCCUPANCY GROUP U "UTILITY AND MISCELLANEOUS" - OBSERVATION / VISION TOWER (NO PUBLIC ACCESS)
 - B) FUNCTION OF SPACE: INDUSTRIAL, AREA IN SQ.FT. (INCLUDES TOP LANDING) PER OCCUPANT = 100 GROSS (346 SQ.FT. / 100 = 4)
 - 1) OCCUPANCY LOAD = 4
 - C) SQUARE FOOTAGE OF THE STRUCTURE = 346 SQ.FT. (INCLUDES TOP LANDING).
 - D) CONSTRUCTION TYPE = IIB
 - E) HEIGHT OF STRUCTURE = 30'-0"
 - F) SPRINKLERS / FIRE ALARMS - NOT REQUIRED
 - G) NO FIELD WELDING. DECKING MATERIAL ALSO MECHANICALLY ATTACHED.
- 3) FOUNDATION RESPONSIBILITY:
 - A) FOUNDATIONS MAY BE EXISTING CONCRETE FLOOR SLAB OR ISOLATED CONCRETE FOOTINGS. THE STRUCTURAL CAPACITY OF THE FOUNDATION IS TO BE DETERMINED BY OTHERS USING SOUND ENGINEERING PRACTICES. THE EXISTING STRENGTH PARAMETERS OF CONCRETE, REINFORCING STEEL, AND SOIL BEARING CAPACITY SHOULD BE ANALYZED IN THE REVIEW.
 - B) MAXIMUM PERIMETER COLUMN LOAD = SEE BASE PLATE LAYOUT SHEET.
 - C) NON-SHRINK GROUT IS RECOMMENDED WHEN THE TOWER FLOOR IS NOT LEVEL WITH THE EXISTING SLAB ON GRADE. GROUT & GROUTING ARE THE RESPONSIBILITY OF OTHERS.
- 4) STRUCTURAL MATERIAL SPECIFICATIONS:
 - A) FLOORING: 1" X 1/8" 19W4 SERRATED BAR GRATE - BEARING BARS ARE ON 1 3/16" CENTERS, 1 1/16" CLEAR BETWEEN BEARING BARS.
 - B) WIDE FLANGE STEEL BEAM SHAPES: F_y = 50 KSI: ASTM A572-50 OR A992-50 (FOR TOWER AND TOP LANDING)
 - C) TOWER TUBE COLUMNS: F_y = 46 KSI: ASTM A500 GRADE B (SEE FLOOR PLAN LAYOUT FOR SIZES)
 - D) INTERMEDIATE LANDING TUBE COLUMNS: F_y = 46 KSI: ASTM A500 GRADE B (TS 2" X 2" X 3/16" WITH L 2" X 2" X 1/8" A36 CONNECTION CLIPS).
 - E) INTERMEDIATE LANDING PLATFORMS: MC10X8.4, A36
 - F) INTERMEDIATE AND TOP LANDINGS: 1" X 1/8" 19W4 SERRATED BAR GRATE - BEARING BARS ARE ON 1 3/16" CENTERS, 1 1/16" CLEAR BETWEEN BEARING BARS.
 - G) STAIRS: MC10X8.4, A36 STRINGERS WITH 1" X 3/16" 19W4 SERRATED BAR GRATE TREADS W/ CHECKER PLATE NOSING.
 - H) GUARDRAIL COMPONENTS:
 - HORIZONTAL TUBES = TS 1 1/2" X 1 1/2" X 14 GA., ASTM A513-TYPE 1, F_{ymin} = 32 KSI.
 - VERTICAL POSTS = TS 1 1/2" X 1 1/2" X 11 GA., ASTM A500 GRADE B, F_{ymin} = 46 KSI. - MAXIMUM SPACING OF 90" ON CENTER.
 - CORNER ANGLES = L 2 1/2" X 2 1/2" X 3/16", ASTM A36, F_{ymin} = 36 KSI.
 - END ANGLES = L 3" X 2" X 3/16", ASTM A36, F_{ymin} = 36 KSI.
 - KICK PLATE = L 4" X 3" X 1/4", ASTM A36, F_{ymin} = 36 KSI.
 - CONNECTION BOLT TO FLOOR FRAMING = 3/8" Ø.
 - CONNECTION BOLT AT CORNERS = 1/2" Ø.
 - I) STAIR GUARDRAILS & HANDRAILS:
 - ALL TUBES EXCEPT VERTICAL POSTS = TS 1 1/2" X 1 1/2" X 14 GA., ASTM A513-TYPE 1, F_{ymin} = 32 KSI.
 - VERTICAL POSTS = TS 1 1/2" X 1 1/2" X 11 GA., ASTM A500 GRADE B, F_{ymin} = 46 KSI. - MAXIMUM SPACING OF 90" ON CENTER.
 - TUBES FOR EXTENDED HANDRAIL BASE = TS 1 3/4" X 1 3/4" X 14 GA., ASTM A513-TYPE 1, F_{ymin} = 32 KSI.
 - J) OTHER STRUCTURAL STEEL SHAPES & BASE PLATES: F_y = 36 KSI: ASTM A36
 - K) STRUCTURAL BOLTS: 1/2" DIAMETER = GRADE 5 AND 5/8" DIAMETER OR LARGER = A325 - A490 (REFERENCE DETAILS FOR CALLOUTS).
 - L) ANCHORS: TO BE SUPPLIED - SEE BASE PLATE LAYOUT SHEET FOR BASE REACTIONS.
- 5) BOLT INSTALLATION:
 - A) BOLTS FOR STRUCTURAL CONNECTIONS SHALL BE 1/2" DIAMETER GRADE 5 AND 5/8" DIAMETER OR LARGER A325 - A490 IN BEARING-TYPE CONNECTIONS, TIGHTENED UNTIL SNUG, UNLESS NOTED OTHERWISE. SNUG TIGHT IS THE TIGHTNESS THAT EXISTS WHEN ALL PLIES IN A JOINT ARE IN FIRM CONTACT AND MAY BE ACHIEVED BY A FEW IMPACTS OF AN IMPACT WRENCH OR THE FULL EFFORT OF A PERSON USING AN ORDINARY SPUD WRENCH. PLEASE NOTE THAT THE AISC DOES NOT RECOGNIZE TIGHTENING BOLTS TO A SPECIFIED TORQUE AS A SUFFICIENT MEANS OF TIGHTENING THEM. IT DOES HOWEVER RECOGNIZE THE TURN OF THE NUT METHOD AS A SUFFICIENT MEANS TO TIGHTEN BOLTS.
- 6) STAIR AND GUARDRAIL DESIGN:
 - A) THE STAIRS, GUARDRAILS, AND STAIR RAILS INCLUDED WITH THIS MODULAR TOWER HAVE BEEN CONFIGURED IN CONFORMANCE WITH OSHA. THEY HAVE ALSO BEEN DESIGNED TO COMPLY WITH THE 2018 IBC REQUIREMENTS.
 - B) IBC CODE COMPLIANCE OF THIS SINGLE MEANS OF EGRESS DESIGN ASSUMES ANY IBC OCCUPANCY TYPE EXCEPT H (HIGH HAZARD), I (INSTITUTIONAL) AND R (RESIDENTIAL) AND MAXIMUM OCCUPANT LOAD ON THE TOWER FLOOR OF 30 PEOPLE.
 - C) STAIRWAY TREAD WIDTH = 36" STAIR TREAD DEPTH = 11.0" (MIN) STAIR RISER HEIGHT = 7.0" (MAX) STAIR HANDRAIL HEIGHT = 34" (MIN) STAIR TREAD MATERIAL = 1" X 3/16" 19W4 SERRATED BAR GRATE TREADS WITH CHECKER PLATE NOSING. GUARDRAIL HEIGHT = 42"
- 7) FINISH - ALL COMPONENTS HOT DIP GALVANIZED
- 8) SPECIAL INSPECTIONS PER IBC 2018, CHAPTER 17:
 - A) HIGH STRENGTH BOLTING
 - 1) ALL CONNECTIONS CONSIDERED BEARING CONDITION AND REQUIRE PERIODIC INSPECTION, UNLESS NOTED OTHERWISE.
 - 2) FRAMED CONNECTIONS CONSIDERED SLIP CRITICAL AND REQUIRE CONTINUOUS INSPECTION.
 - B) HILTI ADHESIVE ANCHOR INSTALLATION (HOLE CLEANING CRITICAL).
 - C) CONCRETE PLACEMENT & MIX DESIGN, REBAR PLACEMENT.



REVISION	REVISION	REVISION	REVISION	REVISION
----------	----------	----------	----------	----------



PLAN NORTH
FOR REFERENCE ONLY

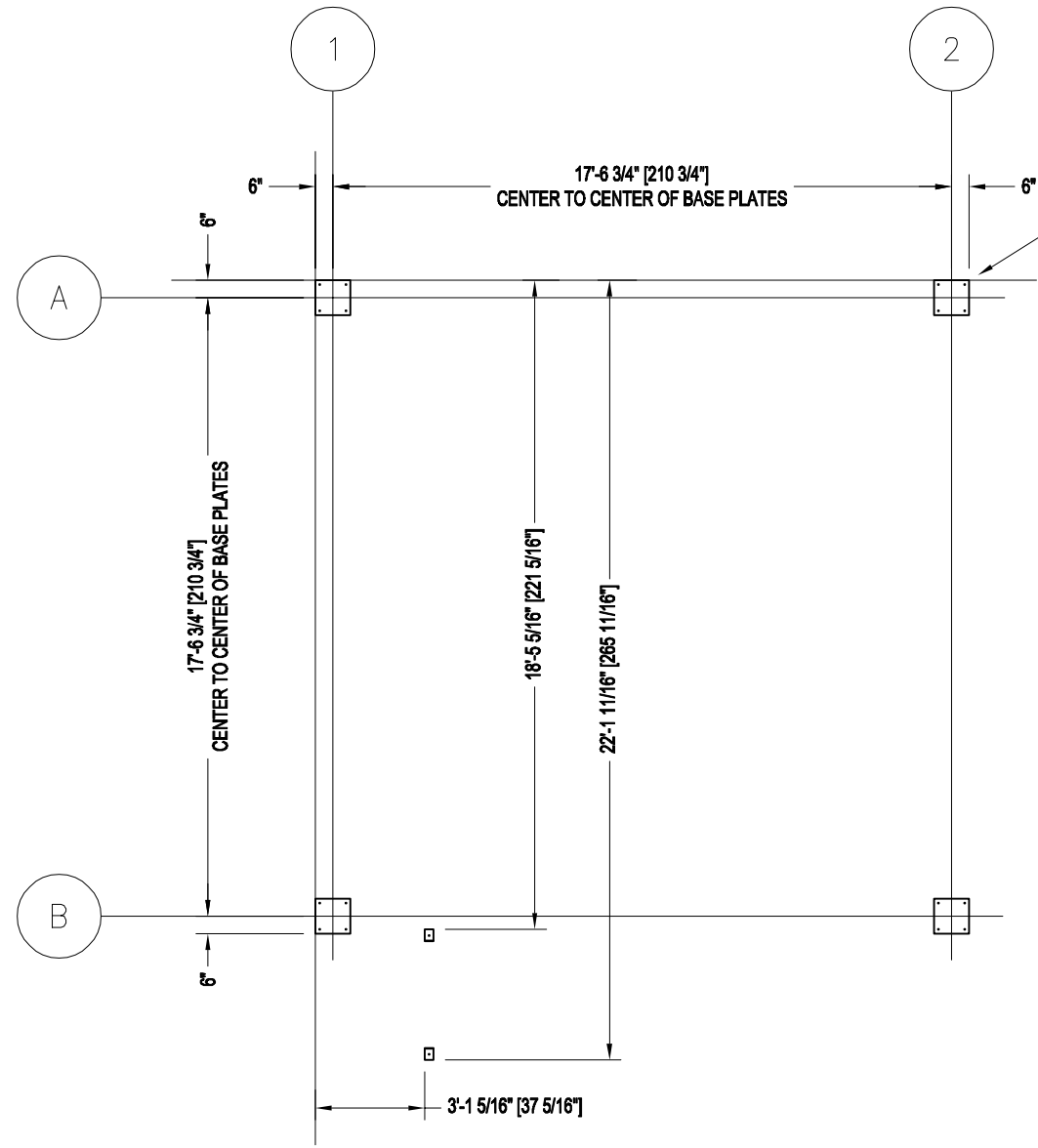
TOWER NOTES SHEET

PAGE NAME:

SHEET M1 OF M11

DRAWN BY:	MO	DEALER:	FULLER ENTERPRISES CONSTRUCTION	JOB NAME:	PACIFICORP WIND	LOCATION:	460 SIXTEEN MILE ROAD - DOUGLAS, WY 82633	REVISION	REVISION
DATE:	3-29-21								
REVISED DATE:									
SCALE:	3/16" = 1'-0"								
ORDER NUMBER:	PK34198-10614								

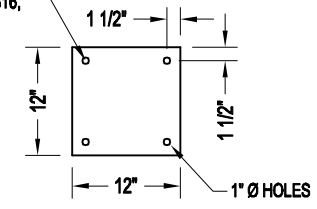
PROPRIETARY INFORMATION
 THIS DRAWING & THE DESIGN IT COVERS ARE THE EXCLUSIVE PROPERTY OF KELLY GROUP, INC. OF MO. THEY ARE PROVIDED ONLY ON THE USER'S EXPRESS AUTHORITY AND ARE NOT TO BE REPRODUCED, COPIED, OR OTHERWISE TRANSMITTED IN ANY MANNER WITHOUT THE WRITTEN CONSENT OF KELLY GROUP, INC. OF MO. TO THE USER OR THEIR AGENTS. KELLY GROUP, INC. OF MO. MAKES NO REPRESENTATION REGARDING DRAWING SCALE & ACCURACY.



BASE PLATE LAYOUT

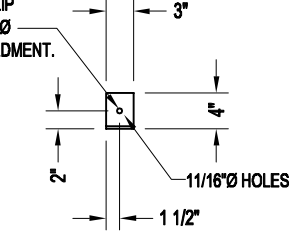
GROUT BASE PLATES AS NECESSARY TO ERECT TOWER WITHIN GUIDELINES ESTABLISHED BY AISC "CODE OF STANDARD PRACTICE FOR STEEL BUILDING AND BRIDGES"
 - USE HILTI GROUT: (BY OTHERS) (1" NOMINAL THICKNESS)

ANCHOR BOLTS: 4 PER BASE PLATE
 HILTI HIT-RE 500-SD + HAS-R 304/316,
 7/8" Ø, TBD* EMBEDMENT.



BASE PLATE: 5/8" x 12" x 12"

ANCHOR BOLTS: 1 PER CLIP
 HILTI HIT-RE 500-SD + 1/2" Ø
 SCREW ANCHOR, 3" EMBEDMENT.



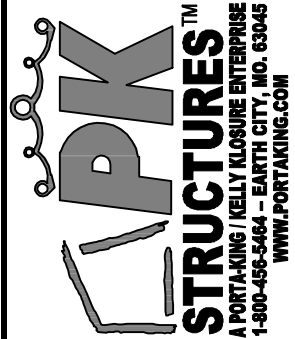
STAIR BOTTOM CLIP: L 4" x 3" x 1/4"

FOUNDATION REACTIONS (ALLOWABLE STRESS DESIGN) PER BASE PLATE:

- MAXIMUM UPLIFT = -TBD LBS.
- MAXIMUM DOWNWARD FORCE = TBD LBS.
- MAXIMUM SHEAR FORCE = TBD LBS.

ANCHOR BOLT REACTIONS (FACTORED LOADS) PER BASE PLATE:

- MAXIMUM UPLIFT = -TBD LBS.
- MAXIMUM DOWNWARD FORCE = TBD LBS.
- MAXIMUM SHEAR FORCE = TBD LBS.



REVISION
REVISION
REVISION
REVISION
REVISION

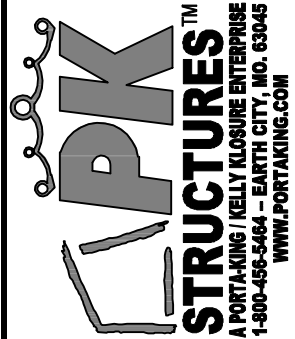
PAGE NAME: **BASE PLATE LAYOUT SHEET**

SHEET **M2** OF **M11**

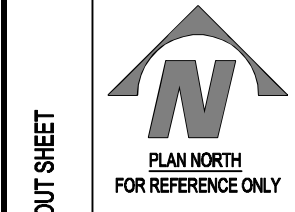
DEALER:	FULLER ENTERPRISES CONSTRUCTION
JOB NAME:	PACIFICORP WIND
LOCATION:	460 SIXTEEN MILE ROAD - DOUGLAS, WY 82633
SCALE:	3/16" = 1'-0"
ORDER NUMBER:	PK34198-10614

PROPRIETARY INFORMATION
 THIS DRAWING & THE DESIGN IT COVERS ARE THE EXCLUSIVE PROPERTY OF KELLY GROUP, INC. OF MO. THEY ARE PROVIDED ONLY ON THE USER'S EXPRESS AUTHORITY AND FOR THE LIMITED PURPOSES STATED HEREIN. ANY REUSE, CHANGE, OR OTHER MODIFICATION OF THIS DRAWING WITHOUT THE WRITTEN CONSENT OF KELLY GROUP, INC. OF MO. TO THE USER OR THEIR AGENTS, KELLY GROUP, INC. OF MO. MAKES NO REPRESENTATION REGARDING DRAWING SCALE & ACCURACY.

THIS IS AN INTEGRATED PROJECT. PLEASE CHECK MEZZANINE AND PRE-ASSEMBLED BUILDING DRAWINGS FOR ALL DETAILS THAT MAY BE APPLICABLE TO BOTH TO MAKE SURE THAT NOTHING IS MISSED IN THE ASSEMBLY PROCESS.



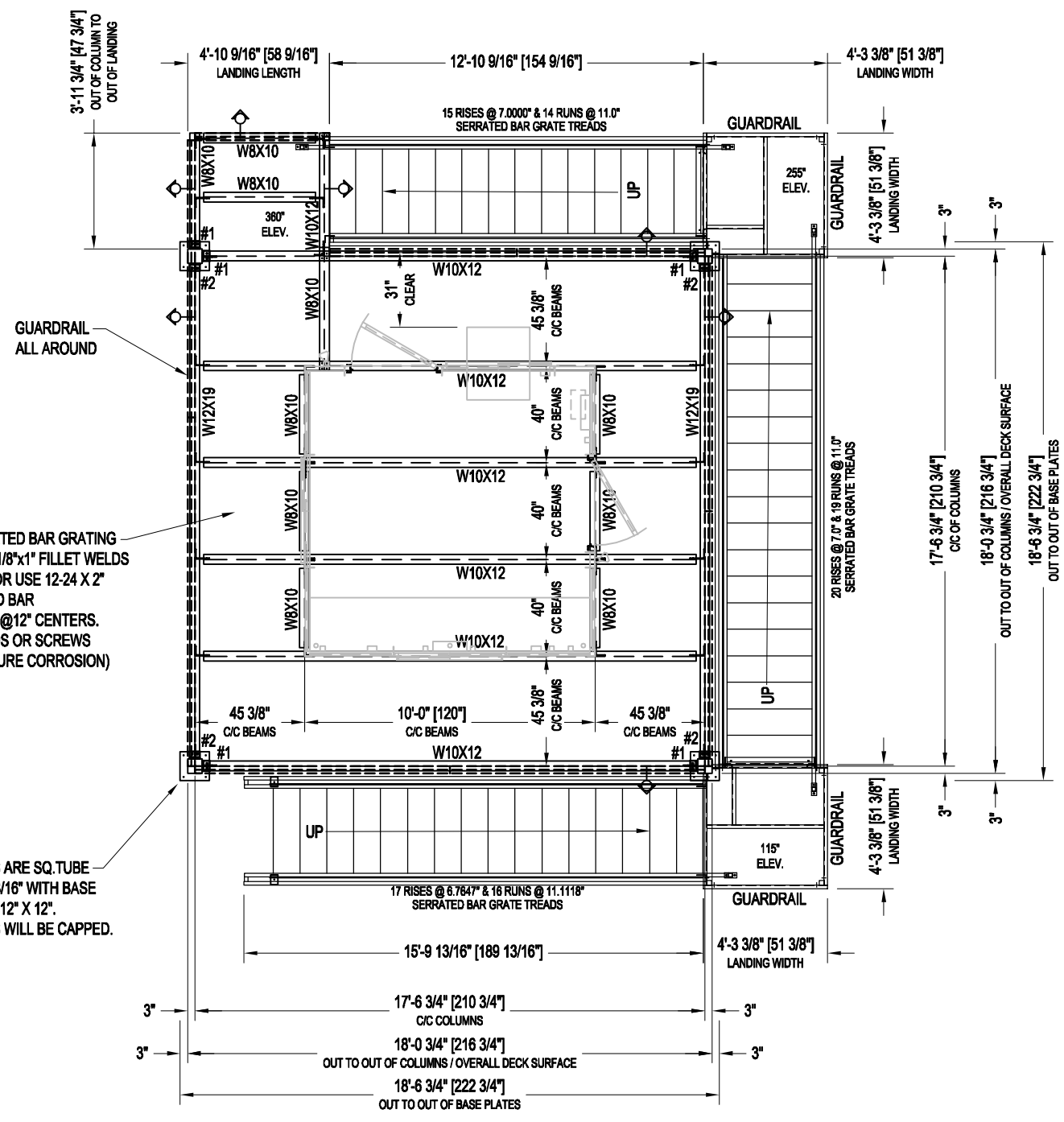
REVISION
REVISION
REVISION
REVISION
REVISION



FLOOR PLAN LAYOUT SHEET

SHEET M3 OF M11

DRAWN BY:	MO	DEALER:	FULLER ENTERPRISES CONSTRUCTION
DATE:	3-29-21	JOB NAME:	PACIFICORP WIND
REVISED DATE:		LOCATION:	460 SIXTEEN MILE ROAD - DOUGLAS, WY 82633
SCALE:	3/16" = 1'-0"	PROPRIETARY INFORMATION <small>THIS DRAWING & THE DESIGN IT COVERS ARE THE EXCLUSIVE PROPERTY OF KELLY GROUP, INC. OF MO. THEY ARE PROVIDED ONLY ON THE USER'S EXPRESS AGREEMENT AND ARE NOT TO BE REPRODUCED, COPIED, OR TRANSMITTED IN ANY FORM OR BY ANY MEANS, ELECTRONIC OR MECHANICAL, INCLUDING PHOTOCOPYING, RECORDING, OR BY ANY INFORMATION STORAGE AND RETRIEVAL SYSTEM, WITHOUT THE WRITTEN PERMISSION OF KELLY GROUP, INC. OF MO. TO THE USER OR THEIR AGENTS. KELLY GROUP, INC. OF MO. MAKES NO REPRESENTATION REGARDING DRAWING SCALE & ACCURACY.</small>	
ORDER NUMBER:	PK34198-10614		

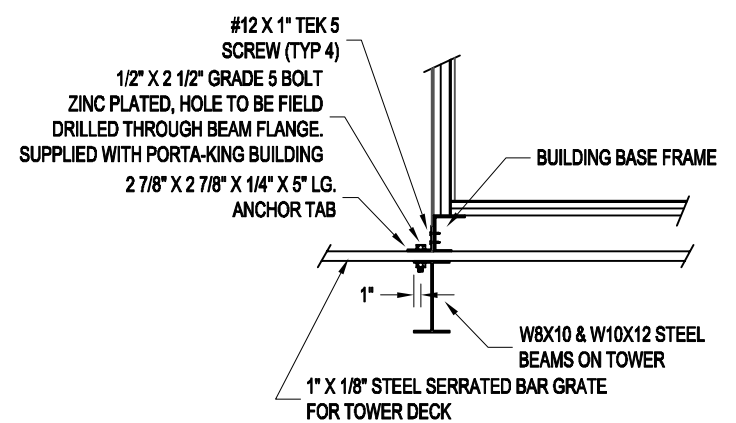


CONNECT SERRATED BAR GRATING TO BEAMS WITH 1/8"x1" FILLET WELDS @ 12" CENTERS, OR USE 12-24 X 2" TEK SCREWS AND BAR GRATE SADDLES @ 12" CENTERS. (TOUCH UP WELDS OR SCREWS TO MINIMIZE FUTURE CORROSION)

ALL COLUMNS ARE SQ. TUBE HSS 6" X 6" X 3/16" WITH BASE PLATES 5/8" X 12" X 12". ALL COLUMNS WILL BE CAPPED.

NOTE:
- HOLES FOR ATTACHING THE GUARDRAIL TO THE BEAM FLANGE AROUND THE PERIMETER OF THE MEZZANINE NEED TO BE FIELD DRILLED.

- BEAM SEAT CONDITIONS:**
- #1 - BEARING PLATE 1/2" x 4 1/2" W/ L3"x2"x3/16"
 - #2 - BEARING PLATE 5/8" x 4 1/2" W/ L3"x2"x3/16"
 - #3 - BEARING PLATE 3/4" x 4 1/2" W/ L3"x2"x1/4"
 - #4 - BEARING PLATE 3/4" x 5 1/2" W/ L3"x2"x1/4"
 - #5 - BEARING PLATE 3/4" x 5 1/2" W/ L3"x2"x1/4" AND TRIANGULAR GUSSET.

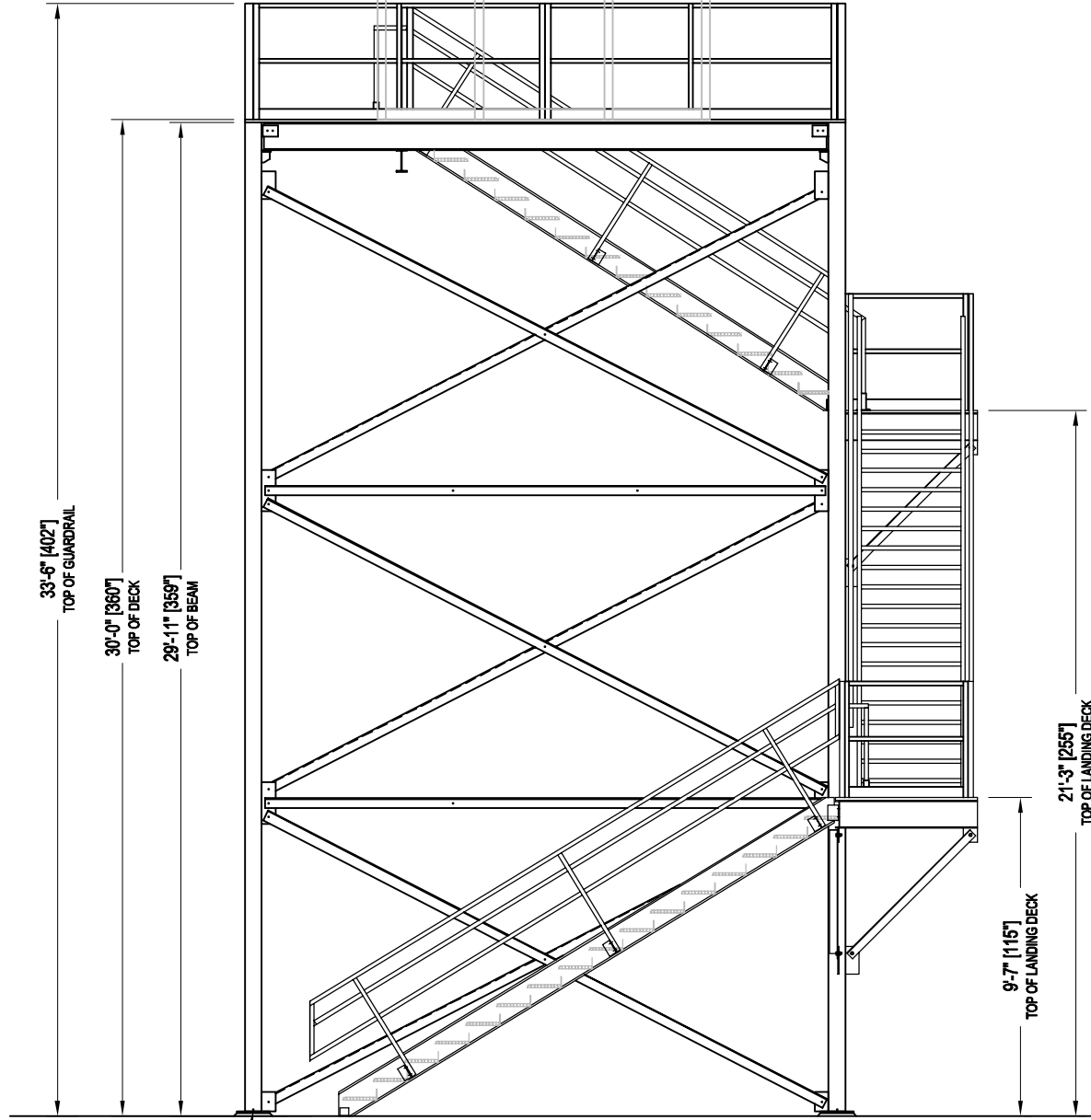


ANCHORING DETAIL FOR BUILDING TO MEZZANINE

CRITICAL

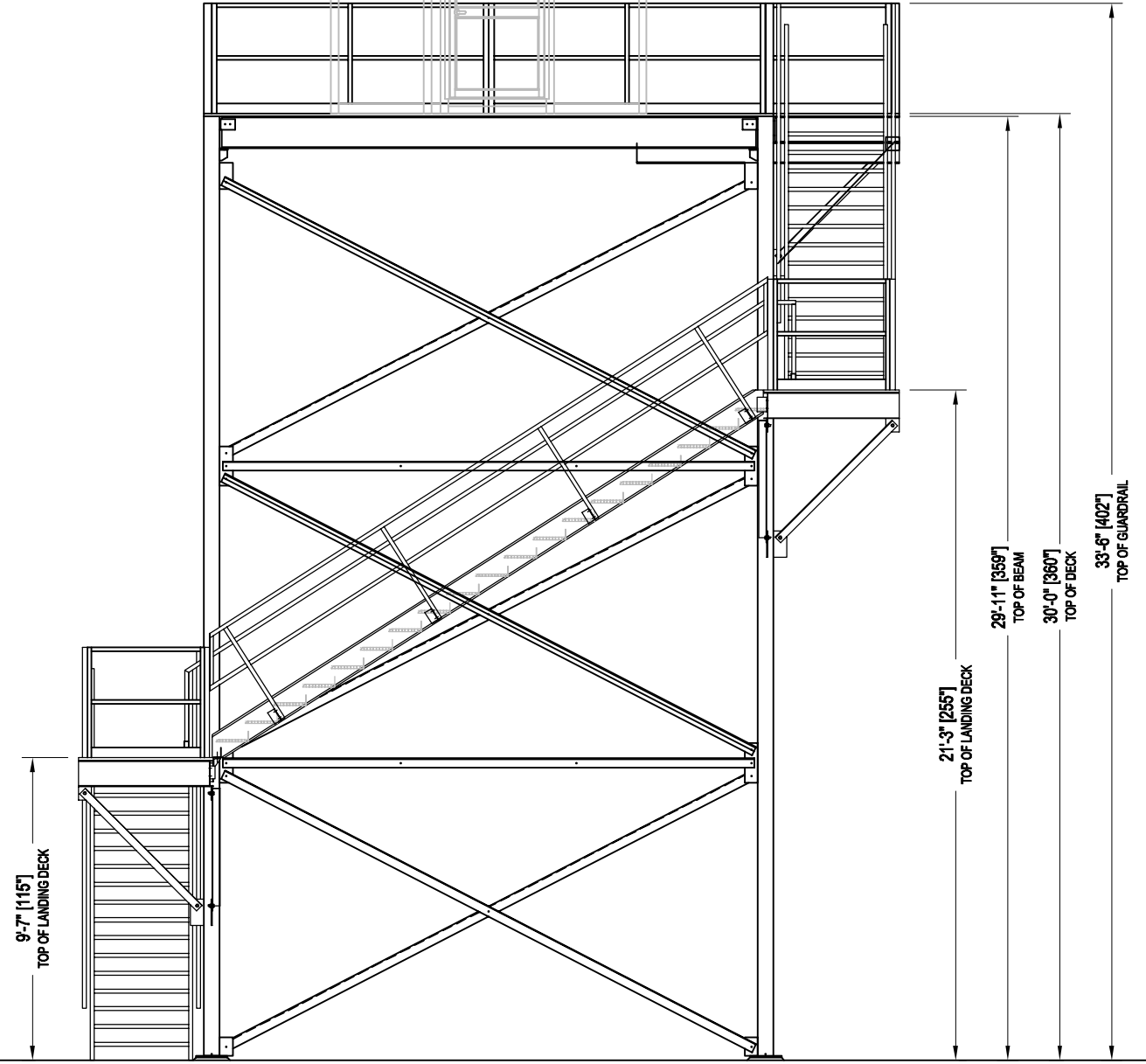
NOTE: THE BUILDING NEEDS TO BE BOLTED TO THE MEZZANINE BEAMS. ANGLE TABS WILL BE SHIPPED WITH THE PORTA-KING BLDG. THE TABS WILL NEED TO BE FIELD ATTACHED TO THE BLDG., THEN USING THE TABS AS A TEMPLATE HOLES NEED TO BE FIELD DRILLED THROUGH THE MEZZANINE BEAMS BELOW. BOLTS 2 1/2" LONG WILL BE SUPPLIED WITH THE BUILDING.

PORTA-KING BUILDING: 4000 LBS.
 10'-0" W x 10'-4 7/8" H x 10'-0" L
 (14'-0" W x 14'-0" L AT EAVE)
 BUILDING DESIGN IS THE
 RESPONSIBILITY OF OTHERS



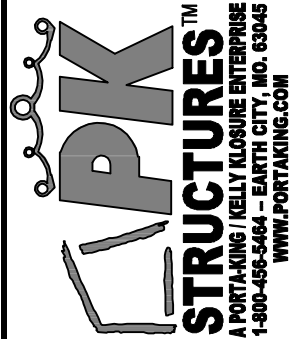
SOUTH ELEVATION VIEW

PORTA-KING BUILDING: 4000 LBS.
 10'-0" W x 10'-4 7/8" H x 10'-0" L
 (14'-0" W x 14'-0" L AT EAVE)
 BUILDING DESIGN IS THE
 RESPONSIBILITY OF OTHERS



EAST ELEVATION VIEW

THIS IS AN INTEGRATED PROJECT. PLEASE CHECK MEZZANINE AND PRE-ASSEMBLED BUILDING DRAWINGS FOR ALL DETAILS THAT MAY BE APPLICABLE TO BOTH TO MAKE SURE THAT NOTHING IS MISSED IN THE ASSEMBLY PROCESS.



REVISION	
REVISION	
REVISION	
REVISION	
REVISION	

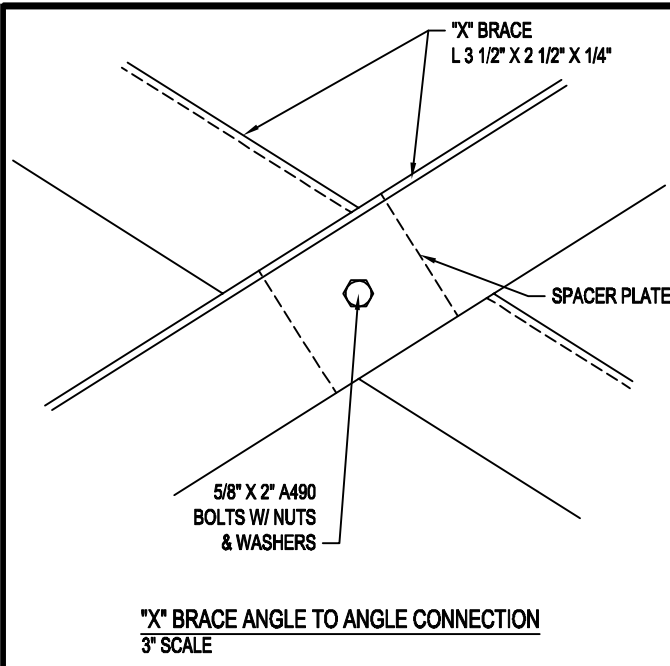


PLAN NORTH
FOR REFERENCE ONLY

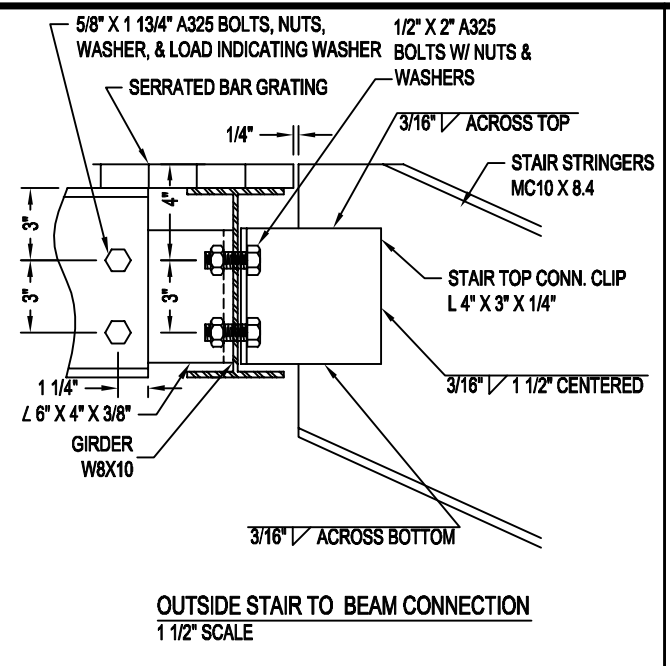
PAGE NAME: ELEVATION VIEW SHEET
 SHEET M4 OF M11

DEALER: FULLER ENTERPRISES CONSTRUCTION
 JOB NAME: PACIFICORP WIND
 LOCATION: 460 SIXTEEN MILE ROAD - DOUGLAS, WY 82633
PROPRIETARY INFORMATION
 THIS DRAWING & THE DESIGN IT COVERS ARE THE EXCLUSIVE PROPERTY OF KELLY GROUP, INC. OF MO. THEY ARE PROVIDED ONLY ON THE USER'S EXPRESS AUTHORITY AND FOR THE LIMITED AND SPECIFIC PURPOSES STATED HEREON. ANY CHANGES OR OTHER USES, IN WHOLE OR IN PART, WITHOUT THE WRITTEN CONSENT OF KELLY GROUP, INC. OF MO. TO THE USER OR THEIR AGENTS, KELLY GROUP, INC. OF MO. MAKES NO REPRESENTATION REGARDING DRAWING SCALE & ACCURACY.

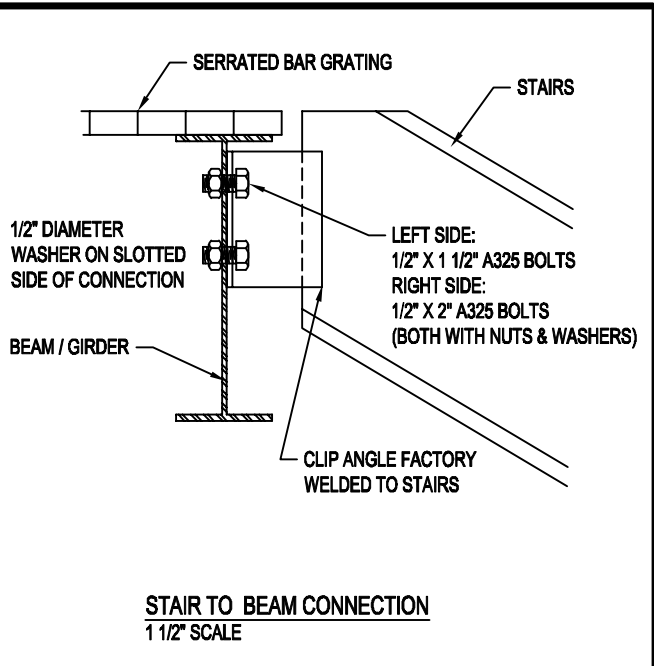
DRAWN BY: MO
 DATE: 3-29-21
 REVISED DATE:
 SCALE: 3/16" = 1'-0"
 ORDER NUMBER:
 PK34198-10614



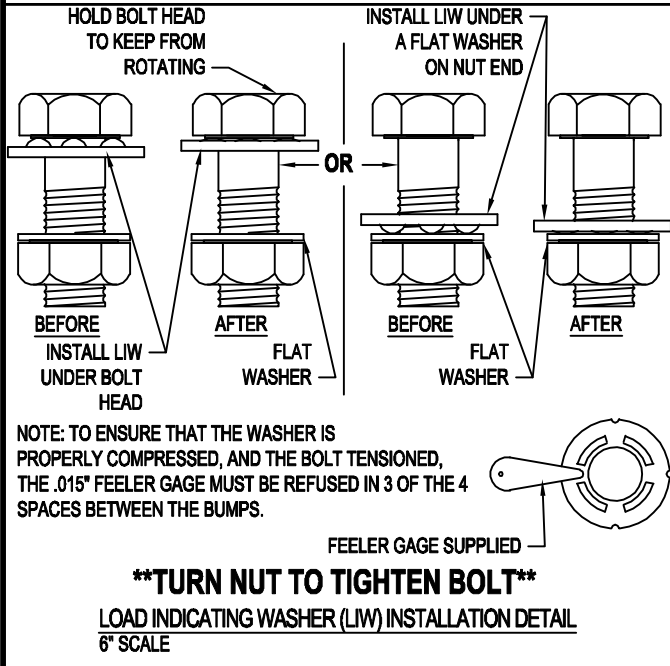
"X" BRACE ANGLE TO ANGLE CONNECTION
3" SCALE



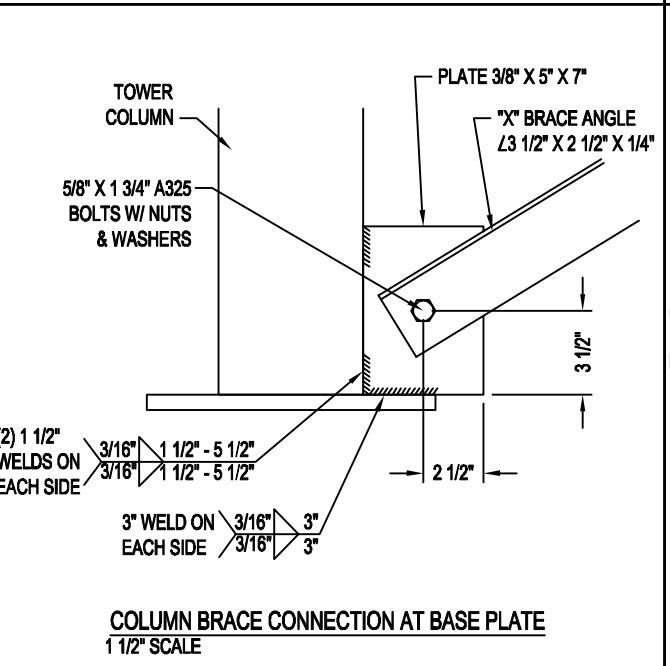
OUTSIDE STAIR TO BEAM CONNECTION
1 1/2" SCALE



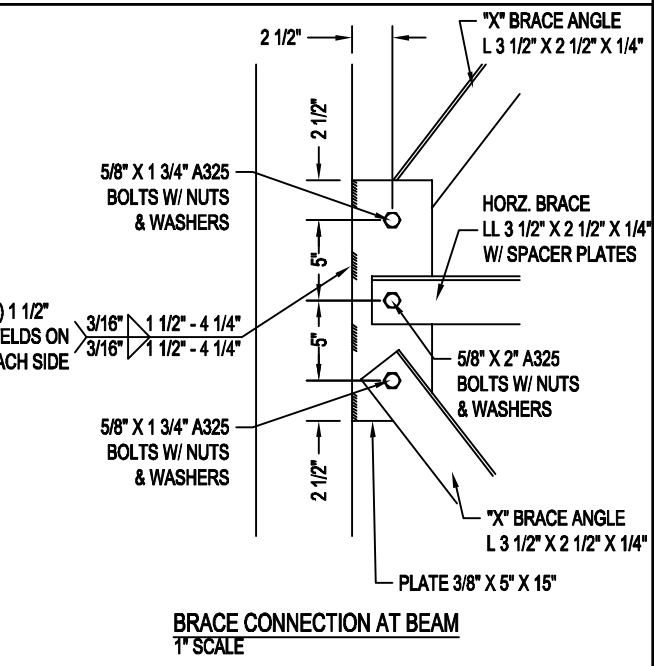
STAIR TO BEAM CONNECTION
1 1/2" SCALE



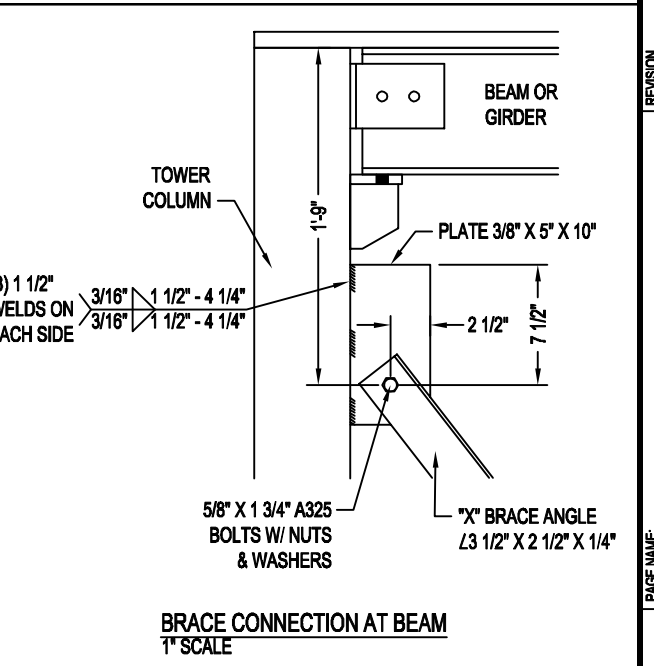
****TURN NUT TO TIGHTEN BOLT****
LOAD INDICATING WASHER (LIW) INSTALLATION DETAIL
6" SCALE



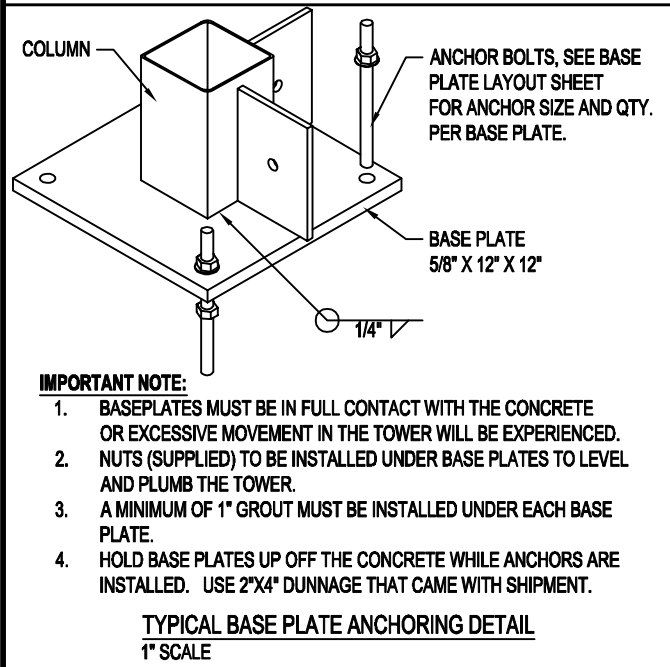
COLUMN BRACE CONNECTION AT BASE PLATE
1 1/2" SCALE



BRACE CONNECTION AT BEAM
1" SCALE

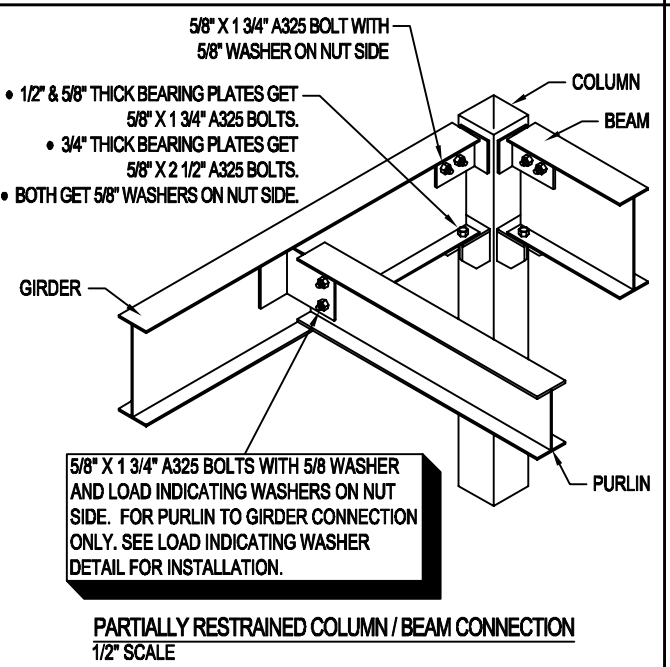


BRACE CONNECTION AT BEAM
1" SCALE

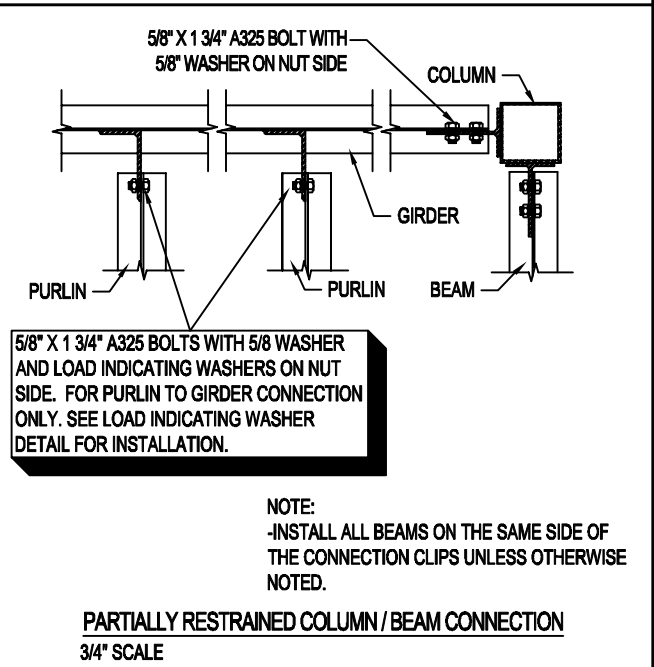


- IMPORTANT NOTE:**
1. BASEPLATES MUST BE IN FULL CONTACT WITH THE CONCRETE OR EXCESSIVE MOVEMENT IN THE TOWER WILL BE EXPERIENCED.
 2. NUTS (SUPPLIED) TO BE INSTALLED UNDER BASE PLATES TO LEVEL AND PLUMB THE TOWER.
 3. A MINIMUM OF 1" GROUT MUST BE INSTALLED UNDER EACH BASE PLATE.
 4. HOLD BASE PLATES UP OFF THE CONCRETE WHILE ANCHORS ARE INSTALLED. USE 2"X4" DUNNAGE THAT CAME WITH SHIPMENT.

TYPICAL BASE PLATE ANCHORING DETAIL
1" SCALE



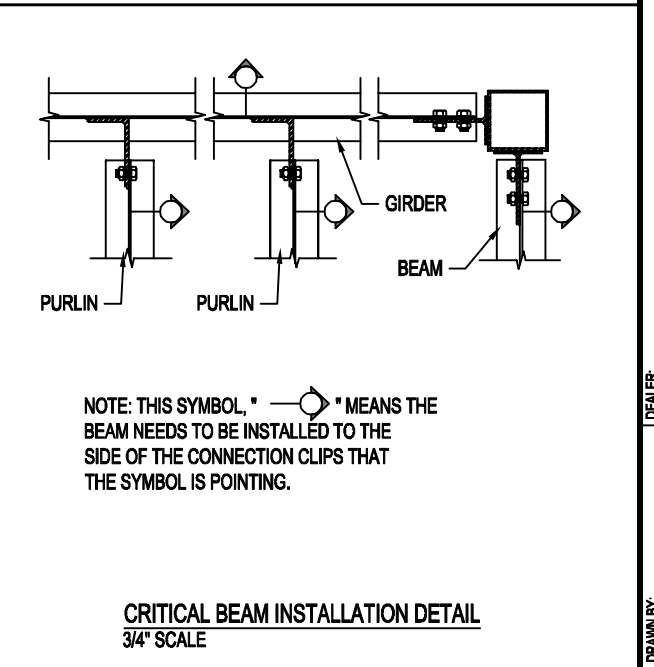
PARTIALLY RESTRAINED COLUMN / BEAM CONNECTION
1/2" SCALE



5/8" X 1 3/4" A325 BOLTS WITH 5/8" WASHER AND LOAD INDICATING WASHERS ON NUT SIDE. FOR PURLIN TO GIRDER CONNECTION ONLY. SEE LOAD INDICATING WASHER DETAIL FOR INSTALLATION.

NOTE:
-INSTALL ALL BEAMS ON THE SAME SIDE OF THE CONNECTION CLIPS UNLESS OTHERWISE NOTED.

PARTIALLY RESTRAINED COLUMN / BEAM CONNECTION
3/4" SCALE

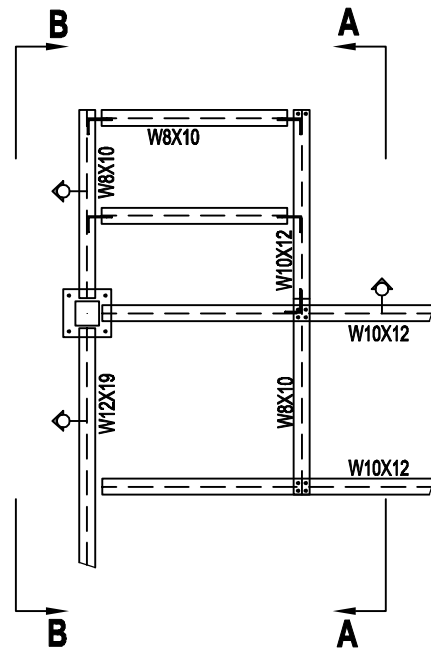


NOTE: THIS SYMBOL " " MEANS THE BEAM NEEDS TO BE INSTALLED TO THE SIDE OF THE CONNECTION CLIPS THAT THE SYMBOL IS POINTING.

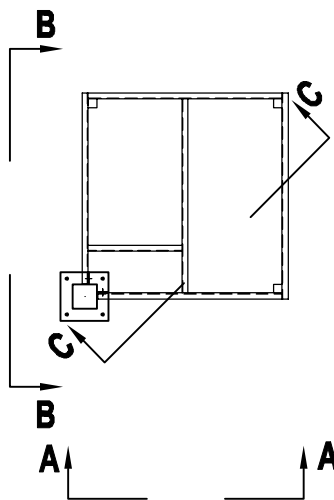
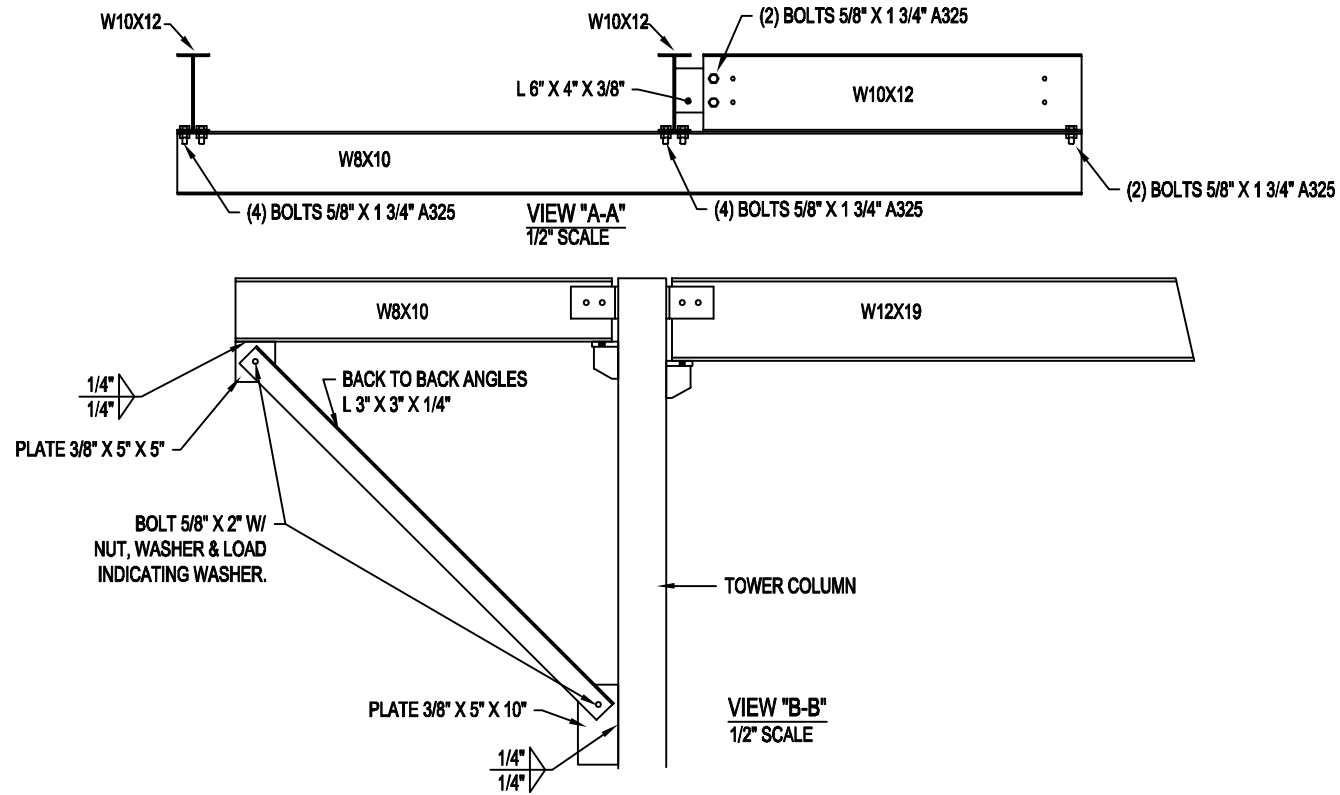
CRITICAL BEAM INSTALLATION DETAIL
3/4" SCALE

PK STRUCTURES™
A PORTAKING / KELLY KLOSURE ENTERPRISE
1-800-456-5464 - EARTH CITY, MO. 63045
WWW.PORTAKING.COM

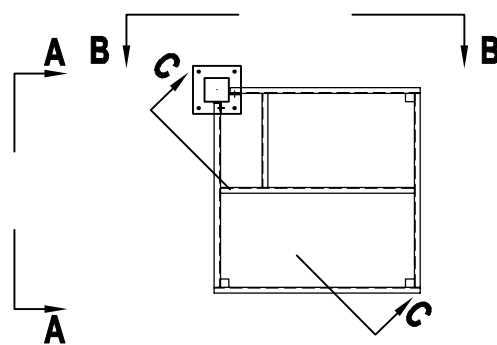
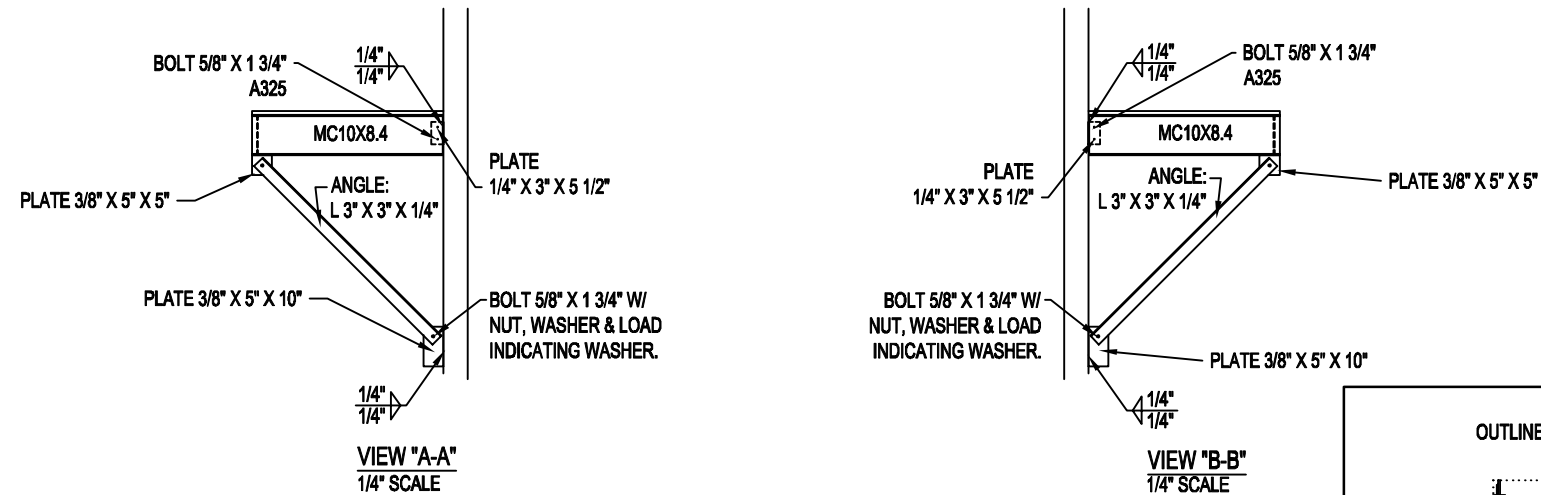
REVISION		REVISION		REVISION		REVISION		REVISION	
<p>PLAN NORTH FOR REFERENCE ONLY</p>									
ENLARGED DETAIL SHEET					SHEET M5 OF M11				
DRAWN BY:	MO	DATE:	3-29-21	REVISED DATE:					
DEALER:	FULLER ENTERPRISES CONSTRUCTION		JOB NAME:	PACIFICORP WIND					
LOCATION:	460 SIXTEEN MILE ROAD - DOUGLAS, WY 82633								
SCALE:	3/16" = 1'-0"								
ORDER NUMBER:	PK34198-10614								
<p>PROPRIETARY INFORMATION THIS DRAWING & THE DESIGN IT COVERS ARE THE EXCLUSIVE PROPERTY OF KELLY GROUP, INC. OF MO. THEY ARE PROVIDED ONLY ON THE USER'S EXPRESS AUTHORITY AND ARE NOT TO BE REPRODUCED, COPIED, OR TRANSMITTED IN ANY FORM OR BY ANY MEANS, ELECTRONIC OR MECHANICAL, INCLUDING PHOTOCOPYING, RECORDING, OR BY ANY INFORMATION STORAGE AND RETRIEVAL SYSTEM, WITHOUT THE WRITTEN PERMISSION OF KELLY GROUP, INC. OF MO. TO THE USER OR THEIR AGENTS. KELLY GROUP, INC. OF MO. MAKES NO REPRESENTATION REGARDING DRAWING SCALE & ACCURACY.</p>									



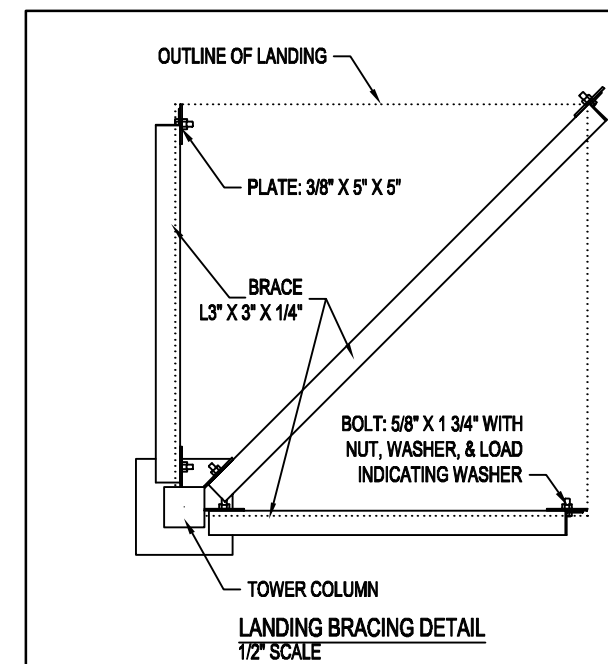
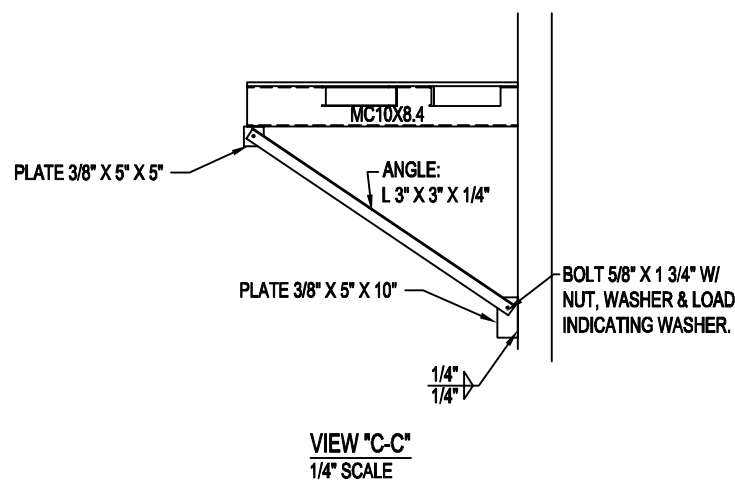
ENLARGED PLAN VIEW OF LANDING AT THE 360° ELEV.
1/4" SCALE



ENLARGED PLAN VIEW OF LANDING AT THE 255° ELEV.
1/4" SCALE

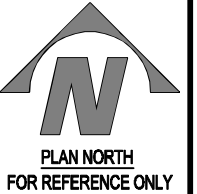


ENLARGED PLAN VIEW OF LANDING AT THE 115° ELEV.
1/4" SCALE



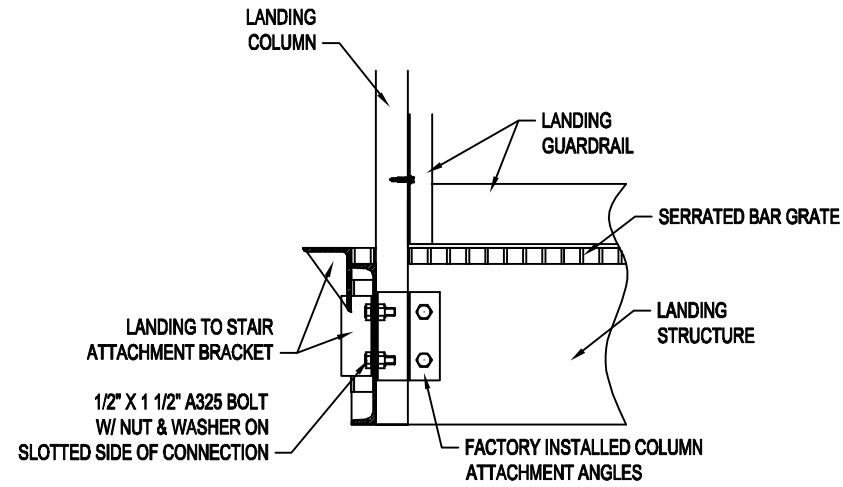
REVISION
REVISION
REVISION
REVISION
REVISION

PAGE NAME: 115°, 255°, AND 360° LANDING ELEVATION DETAILS

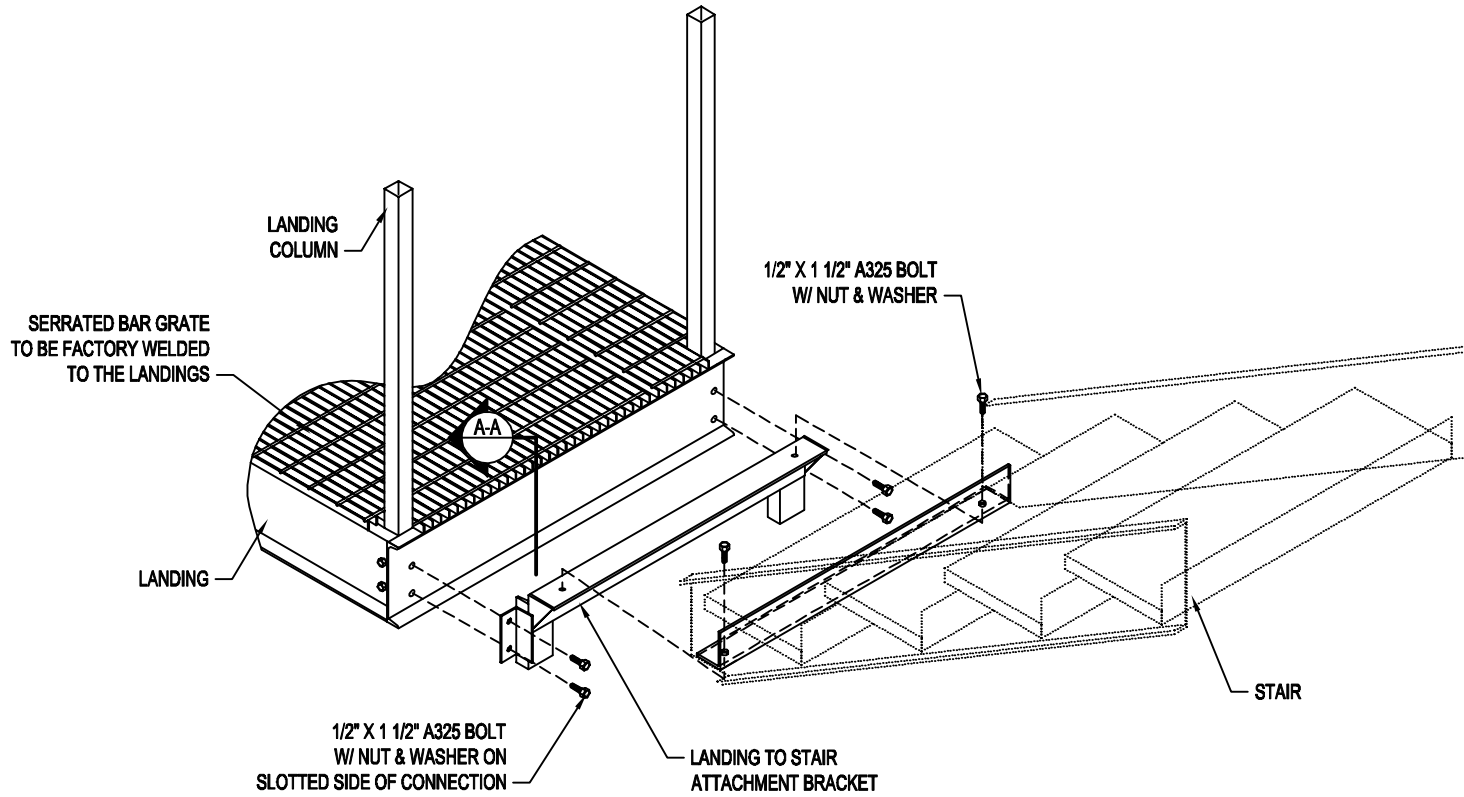


SHEET M6 OF M11

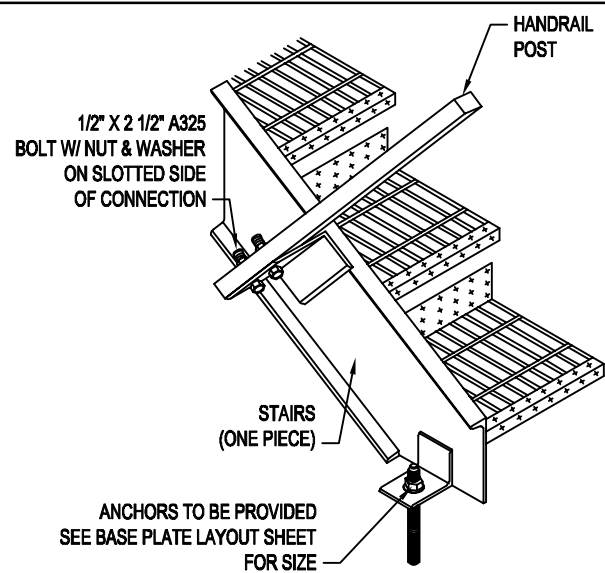
DRAWN BY:	MO	DEALER:	FULLER ENTERPRISES CONSTRUCTION
DATE:	3-29-21	JOB NAME:	PACIFICORP WIND
REVISED DATE:		LOCATION:	460 SIXTEEN MILE ROAD - DOUGLAS, WY 82633
SCALE:	3/16" = 1'-0"	PROPRIETARY INFORMATION THIS DRAWING & THE DESIGN IT COVERS ARE THE EXCLUSIVE PROPERTY OF KELLY GROUP, INC. OF MO. THEY ARE PROVIDED ONLY ON THE USER'S EXPRESS AUTHORITY AND ARE NOT TO BE REPRODUCED, COPIED, OR TRANSMITTED IN ANY FORM OR BY ANY MEANS, ELECTRONIC OR MECHANICAL, INCLUDING PHOTOCOPYING, RECORDING, OR BY ANY INFORMATION STORAGE AND RETRIEVAL SYSTEM, WITHOUT THE WRITTEN PERMISSION OF KELLY GROUP, INC. OF MO. TO THE USER OR THEIR AGENTS. KELLY GROUP, INC. OF MO. MAKES NO REPRESENTATION REGARDING DRAWING SCALE & ACCURACY.	
ORDER NUMBER:	PK34198-10614		



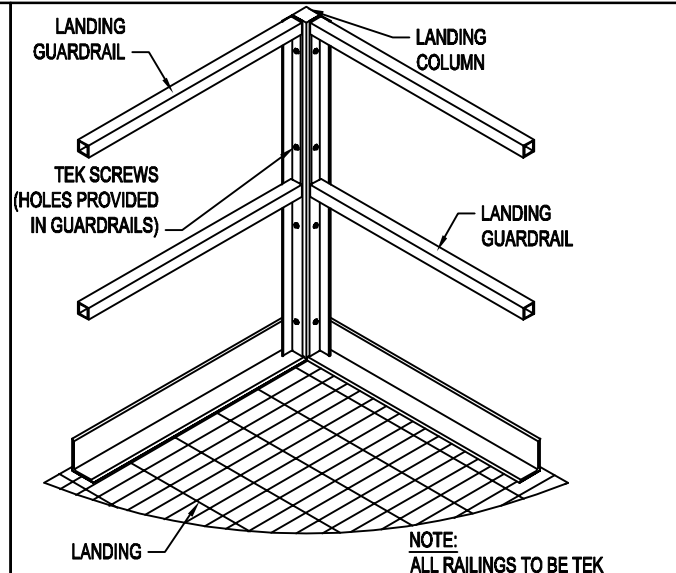
SECTION VIEW A-A
1" SCALE



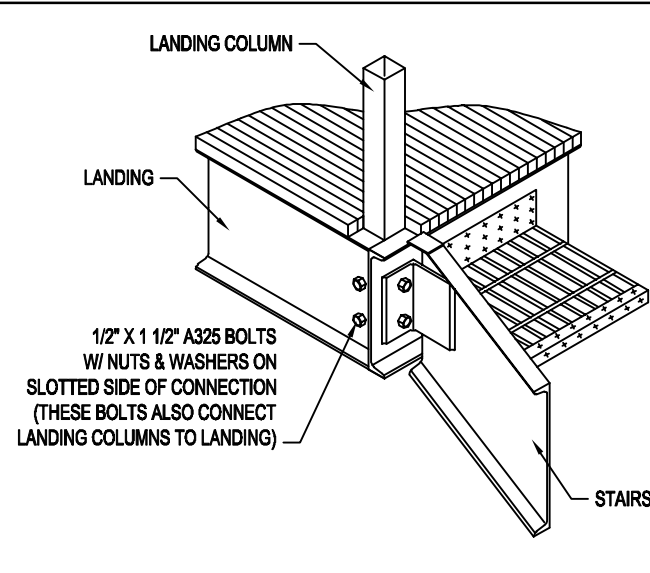
TYPICAL PARTIAL LANDING ISOMETRIC
WITH LANDING TO STAIR ATTACHMENT BRACKET
1/2" SCALE



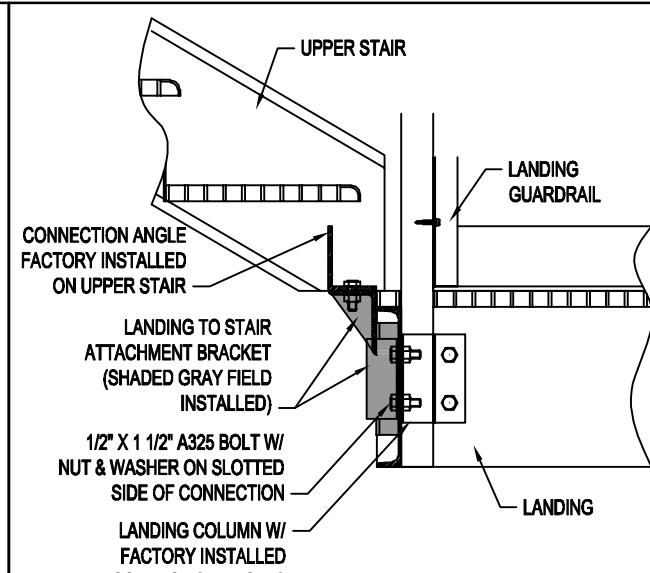
STAIR BASE & HANDRAIL CONNECTION
3/4" SCALE



LANDING GUARDRAIL CONNECTION
1/2" SCALE



TYPICAL STAIR TO LANDING CONNECTION
3/4" SCALE



UPPER STAIR TO LOWER LANDING CONNECTION
1" SCALE

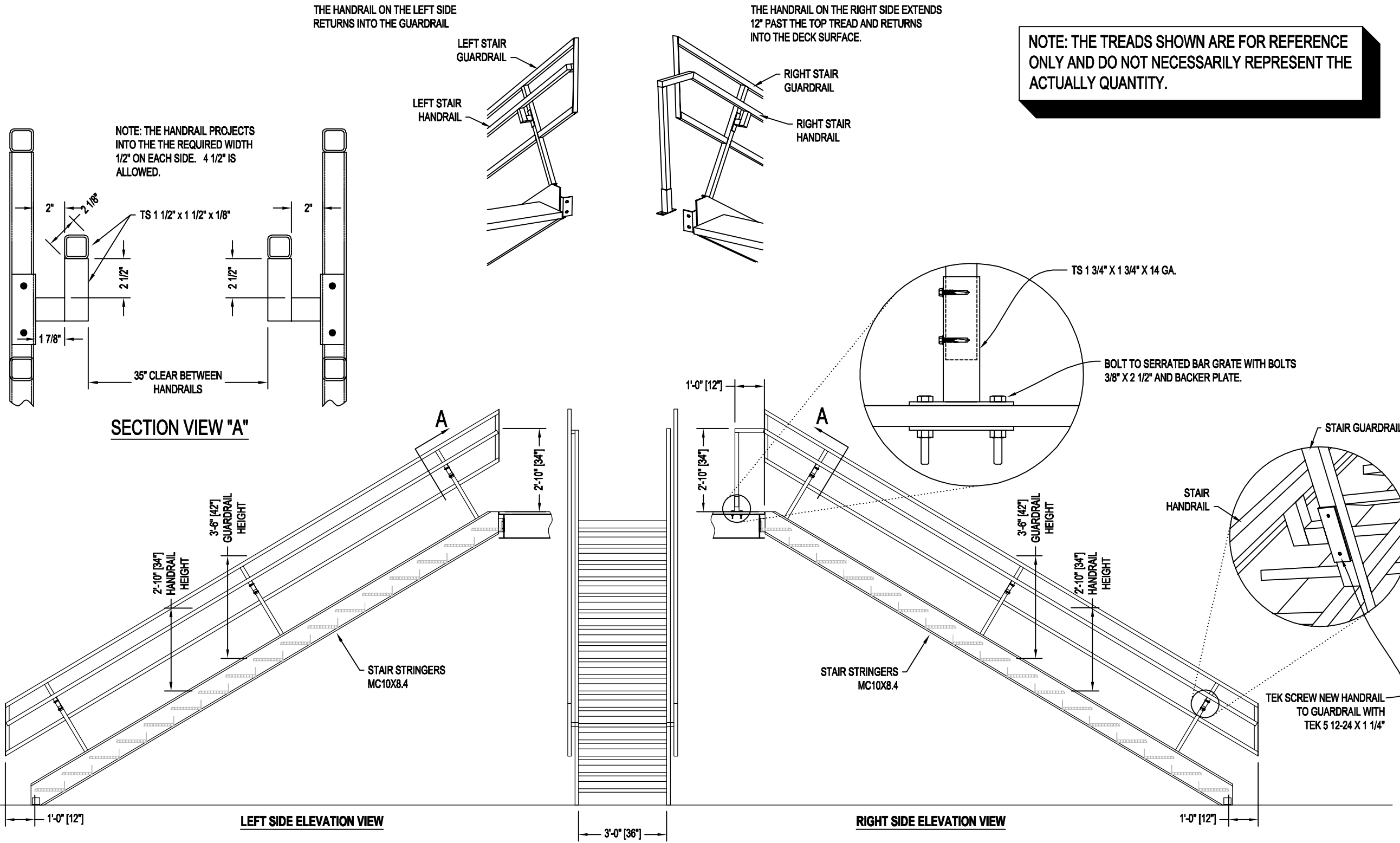
REVISION	REVISION	REVISION	REVISION	REVISION

STAIR AND LANDING DETAIL SHEET

PLAN NORTH
FOR REFERENCE ONLY

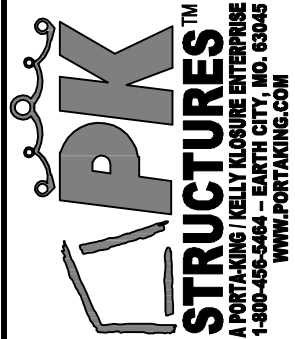
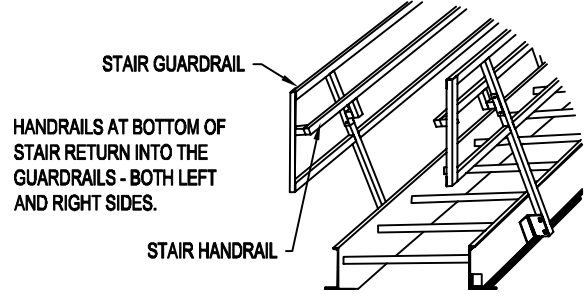
SHEET M7 OF M11

DRAWN BY:	MO	DEALER:	FULLER ENTERPRISES CONSTRUCTION
DATE:	3-29-21	JOB NAME:	PACIFICORP WIND
REVISED DATE:		LOCATION:	460 SIXTEEN MILE ROAD - DOUGLAS, WY 82633
SCALE:	3/16" = 1'-0"	PROPRIETARY INFORMATION <small>THIS DRAWING & THE DESIGN IT COVERS ARE THE EXCLUSIVE PROPERTY OF KELLY GROUP, INC. OF MO. THEY ARE PROVIDED ONLY ON THE USER'S EXPRESS AUTHORITY AND ARE NOT TO BE REPRODUCED, COPIED, OR TRANSMITTED IN ANY MANNER WITHOUT THE WRITTEN PERMISSION OF KELLY GROUP, INC. OF MO. TO THE USER OR THEIR AGENTS. KELLY GROUP, INC. OF MO. MAKES NO REPRESENTATION REGARDING DRAWING SCALE & ACCURACY.</small>	
ORDER NUMBER:	PK34198-10614		



NOTE: THE TREADS SHOWN ARE FOR REFERENCE ONLY AND DO NOT NECESSARILY REPRESENT THE ACTUAL QUANTITY.

STAIR HANDRAIL DETAIL FOR STAIR FROM SLAB-ON-GRADE TO 115" LANDING LEVEL

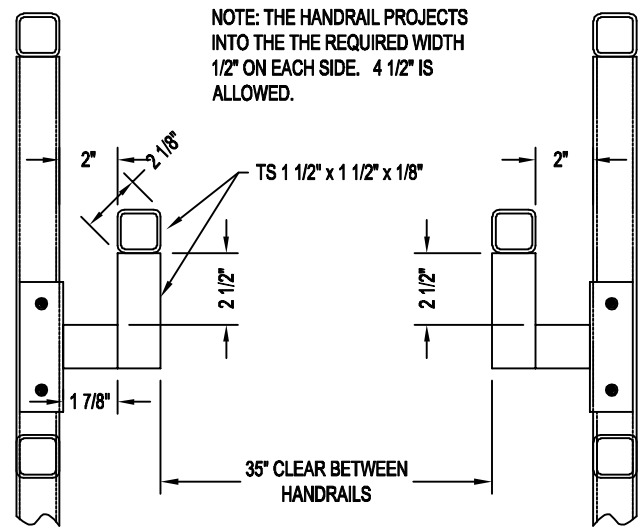


REVISION	REVISION	REVISION	REVISION	REVISION

PAGE NAME: STAIR HANDRAIL DETAIL SHEET FROM SLAB-ON-GRADE TO 115" LANDING LEVEL

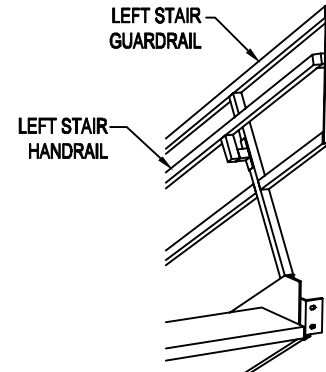
SHEET M8 OF M11

DRAWN BY:	MO	DEALER:	FULLER ENTERPRISES CONSTRUCTION
DATE:	3-29-21	JOB NAME:	PACIFICORP WIND
REVISED DATE:		LOCATION:	460 SIXTEEN MILE ROAD - DOUGLAS, WY 82633
SCALE:	3/16" = 1'-0"	PROPRIETARY INFORMATION <small>THIS DRAWING & THE DESIGN IT COVERS ARE THE EXCLUSIVE PROPERTY OF KELLY GROUP, INC. OF MO. THEY ARE PROVIDED ONLY ON THE USER'S EXPRESS AND LIMITED WARRANTY. ANY CHANGES OR OTHER USES, SUCH AS IN THE FIELD, WITHOUT THE WRITTEN PERMISSION OF KELLY GROUP, INC. OF MO. TO THE USER OR THEIR AGENTS, KELLY GROUP, INC. OF MO. MAKES NO REPRESENTATION REGARDING DRAWING SCALE & ACCURACY.</small>	
ORDER NUMBER:	PK34198-10614		



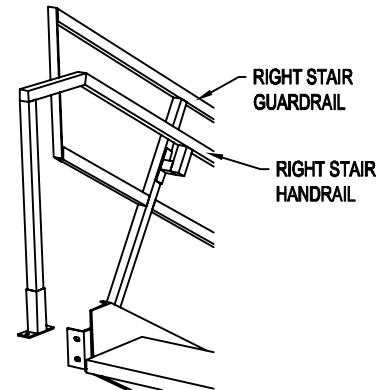
SECTION VIEW "A"

THE HANDRAIL ON THE LEFT SIDE RETURNS INTO THE GUARDRAIL



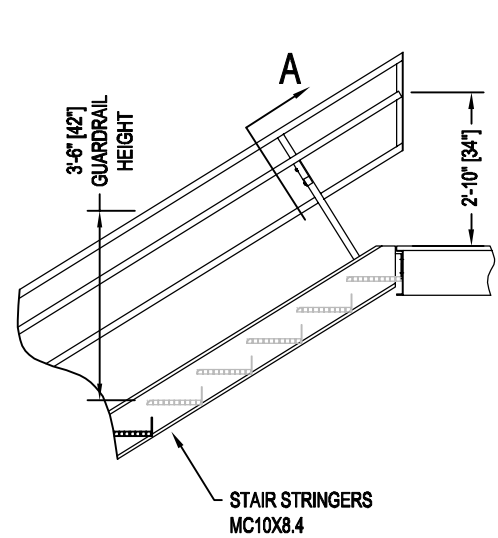
LEFT SIDE

THE HANDRAIL ON THE RIGHT SIDE EXTENDS 12" PAST THE TOP TREAD AND RETURNS INTO THE DECK SURFACE.

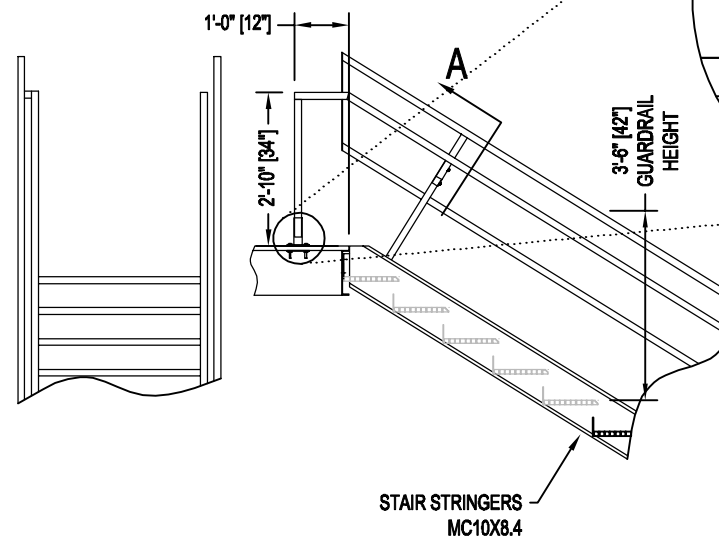


RIGHT SIDE

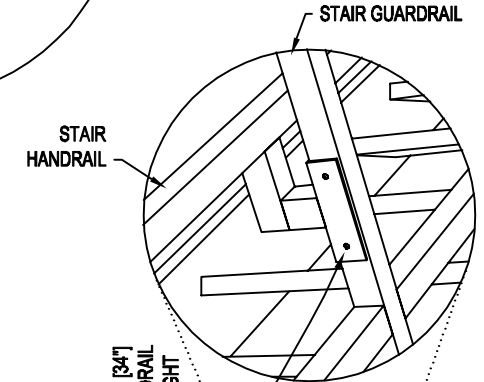
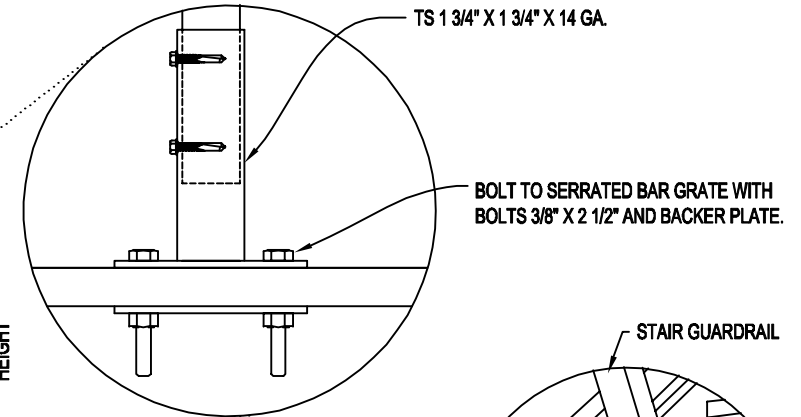
NOTE: THE TREADS SHOWN ARE FOR REFERENCE ONLY AND DO NOT NECESSARILY REPRESENT THE ACTUALLY QUANTITY.



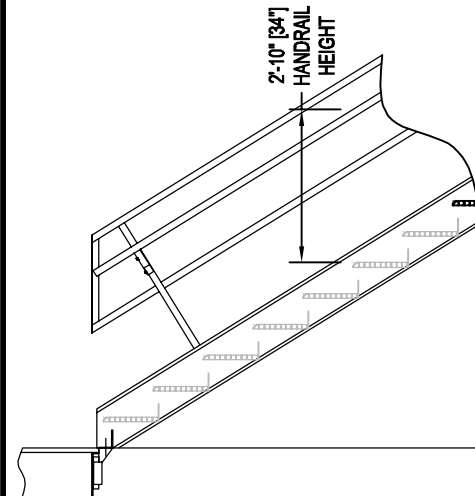
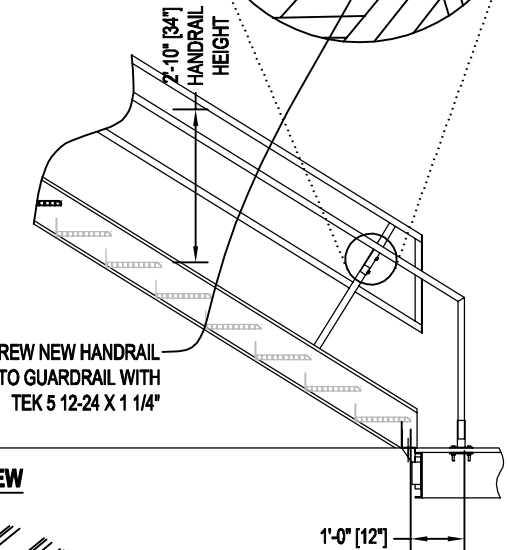
LEFT SIDE ELEVATION VIEW



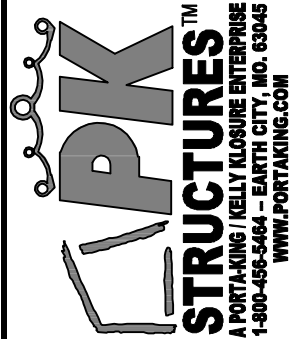
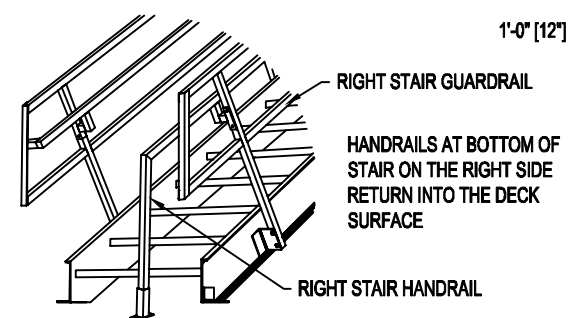
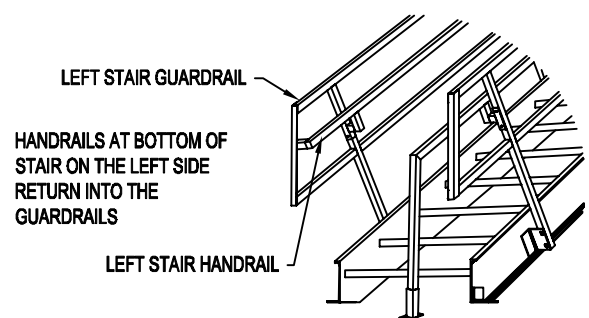
RIGHT SIDE ELEVATION VIEW



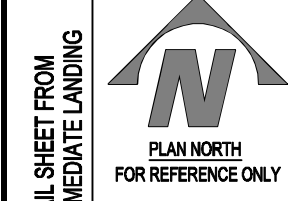
TEK SCREW NEW HANDRAIL TO GUARDRAIL WITH TEK 5 12-24 X 1 1/4"



STAIR HANDRAIL DETAIL FOR STAIRS FROM 115" TO 255" LANDING LEVELS

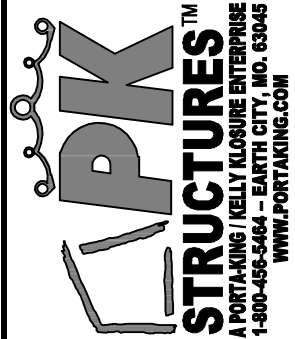
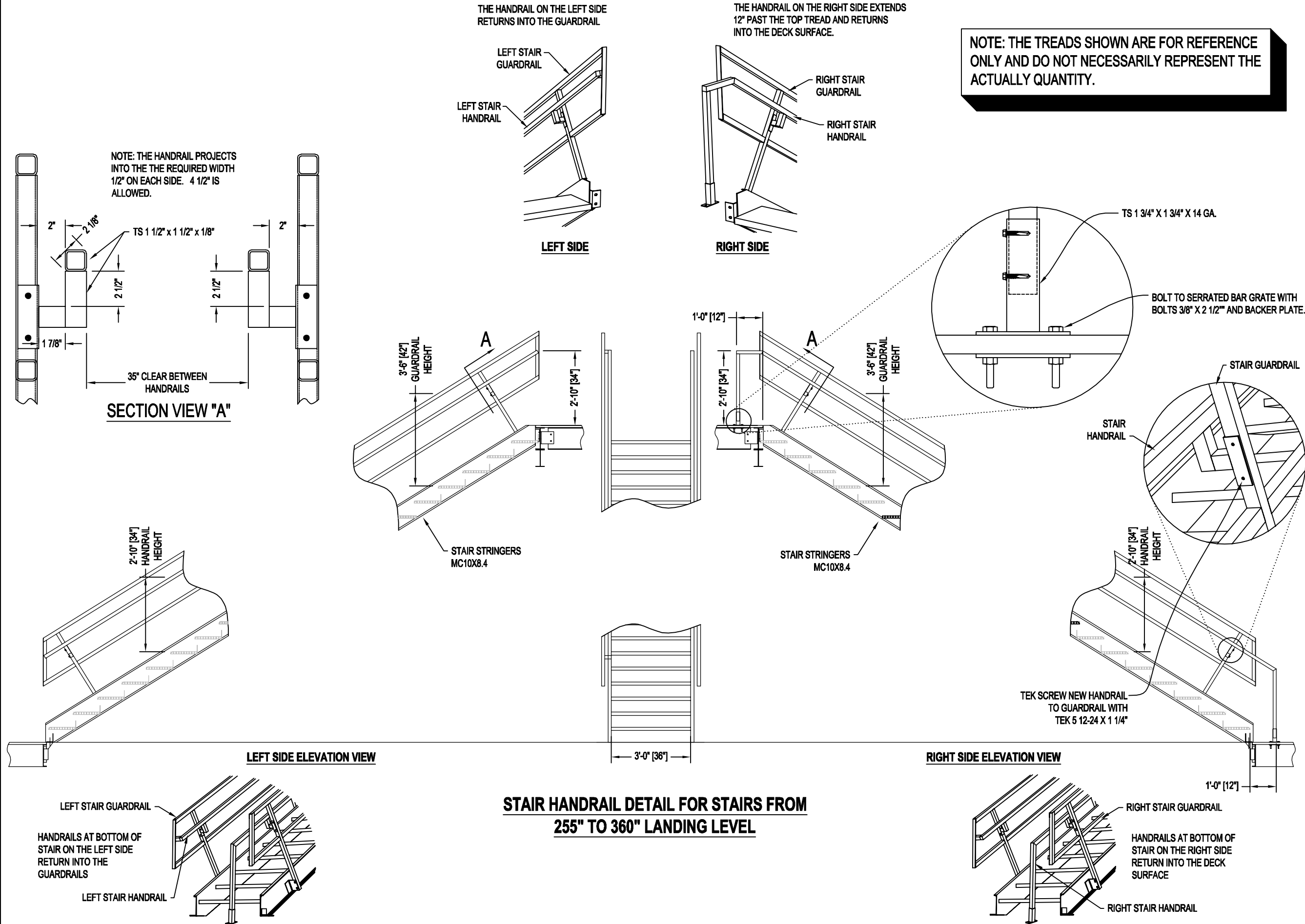


REVISION	REVISION	REVISION	REVISION	REVISION
----------	----------	----------	----------	----------



PAGE NAME: STAIR HANDRAIL DETAIL SHEET FROM INTERMEDIATE TO INTERMEDIATE LANDING
SHEET M9 OF M11

DRAWN BY:	MO	DEALER:	FULLER ENTERPRISES CONSTRUCTION
DATE:	3-29-21	JOB NAME:	PACIFICORP WIND
REVISED DATE:		LOCATION:	460 SIXTEEN MILE ROAD - DOUGLAS, WY 82633
SCALE:	3/16" = 1'-0"	PROPRIETARY INFORMATION	
ORDER NUMBER:	PK34198-10614	THIS DRAWING & THE DESIGN IT COVERS ARE THE EXCLUSIVE PROPERTY OF KELLY GROUP, INC. OF MO. THEY ARE PROVIDED ONLY ON THE USER'S EXPRESS AGREEMENT AND ARE NOT TO BE REPRODUCED, COPIED, OR TRANSMITTED IN ANY MANNER WITHOUT THE WRITTEN PERMISSION OF KELLY GROUP, INC. OF MO. TO THE USER OR THEIR AGENTS. KELLY GROUP, INC. OF MO. MAKES NO REPRESENTATION REGARDING DRAWING SCALE & ACCURACY.	



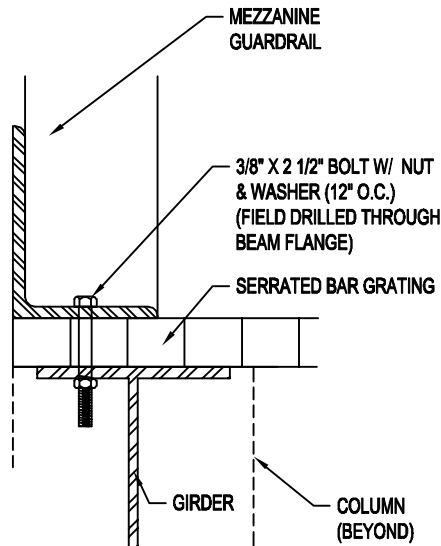
REVISION	REVISION	REVISION	REVISION	REVISION

PAGE NAME: STAIR HANDRAIL DETAIL SHEET FROM INTERMEDIATE LANDING TO TOP LANDING

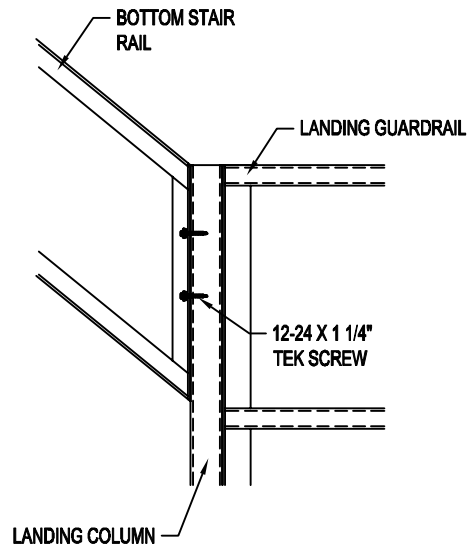
PLAN NORTH FOR REFERENCE ONLY

SHEET M10 OF M11

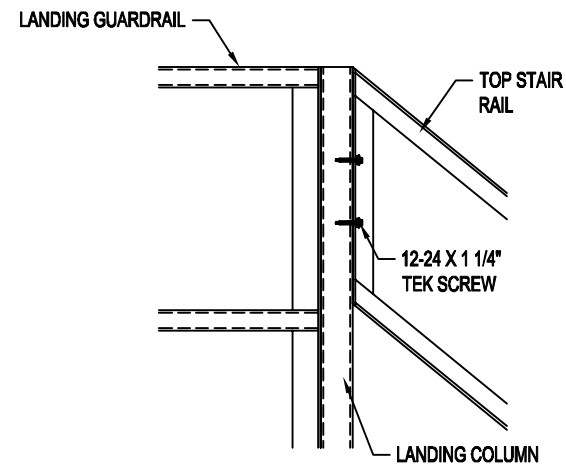
DRAWN BY:	MO	DEALER:	FULLER ENTERPRISES CONSTRUCTION
DATE:	3-29-21	JOB NAME:	PACIFICORP WIND
REVISED DATE:		LOCATION:	460 SIXTEEN MILE ROAD - DOUGLAS, WY 82633
SCALE:	3/16" = 1'-0"	PROPRIETARY INFORMATION THIS DRAWING & THE DESIGN IT COVERS ARE THE EXCLUSIVE PROPERTY OF KELLY GROUP, INC. OF MO. THEY ARE PROVIDED ONLY ON THE USER'S EXPRESS AUTHORITY AND ARE NOT TO BE REPRODUCED, COPIED, EITHER WHOLLY OR IN PART, OR CHANGED OR OTHERWISE USED, WITHOUT THE LIMITED, WRITTEN PERMISSION OF KELLY GROUP, INC. OF MO. TO THE USER OR THEIR AGENTS. KELLY GROUP, INC. OF MO. MAKES NO REPRESENTATION REGARDING DRAWING SCALE & ACCURACY.	
ORDER NUMBER:	PK34198-10614		



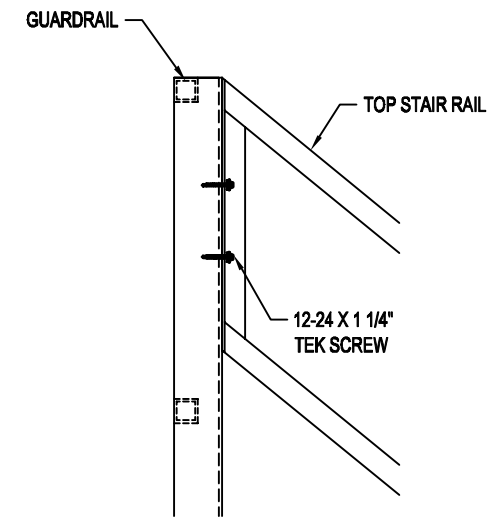
GUARDRAIL BASE SECTION AT DECKING SIDE VIEW
3" SCALE



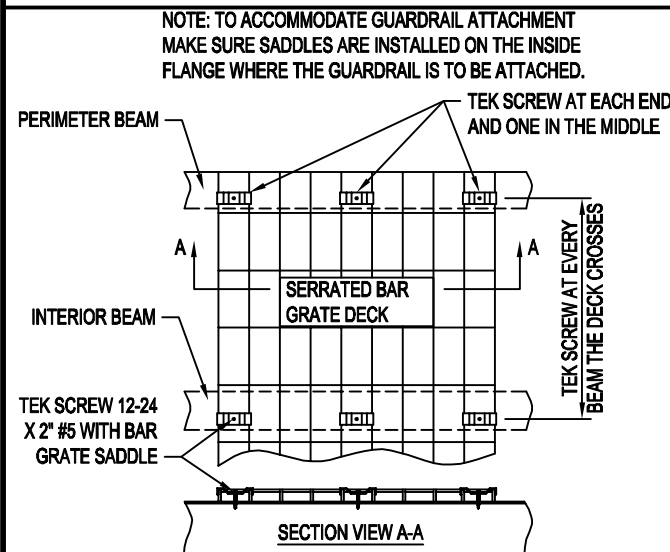
BOTTOM STAIR RAIL TO LANDING COLUMN
1" SCALE



TOP STAIR RAIL TO LANDING COLUMN
1" SCALE

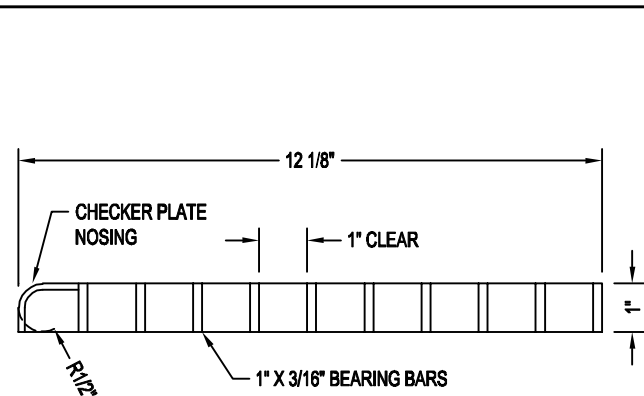


TOP STAIR RAIL TO GUARDRAIL
1" SCALE



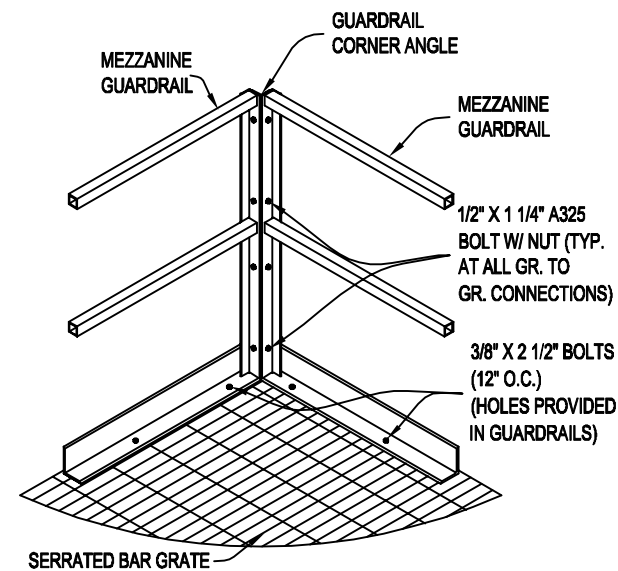
SEE DECK LAYOUT FOR ORIENTATION OF THE GRATING.

SERRATED BAR GRATE ATTACHMENT TO BEAMS
3/4" SCALE

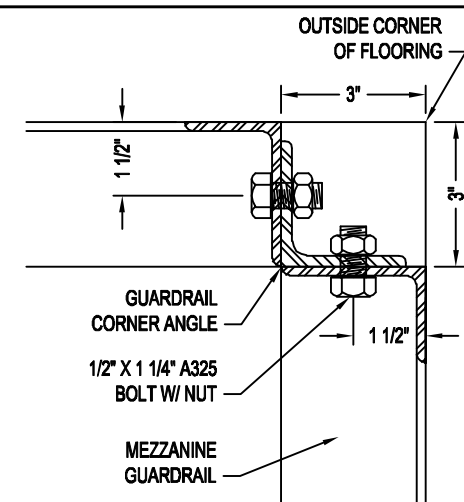


1" X 3/16" 19W4 SERRATED BAR GRATE TREADS WITH CHECKER PLATE NOSING. BEARING BARS ARE ON 1 3/16" CENTER, 1" CLEAR BETWEEN BEARING BARS.

SERRATED BAR GRATE TREAD DETAIL
3" SCALE



GUARDRAIL CORNER CONNECTION



GUARDRAIL CORNER CONNECTION
3" SCALE

REVISION	REVISION	REVISION	REVISION	REVISION

PAGE NAME: ENLARGED DETAIL SHEET

PLAN NORTH
FOR REFERENCE ONLY

SHEET M11 OF M11

DRAWN BY:	MO	DEALER:	FULLER ENTERPRISES CONSTRUCTION
DATE:	3-29-21	JOB NAME:	PACIFICORP WIND
REVISED DATE:		LOCATION:	460 SIXTEEN MILE ROAD - DOUGLAS, WY 82633
SCALE:	3/16" = 1'-0"	<p>PROPRIETARY INFORMATION THIS DRAWING & THE DESIGN IT COVERS ARE THE EXCLUSIVE PROPERTY OF KELLY GROUP, INC. OF MO. THEY ARE PROVIDED ONLY ON THE USER'S EXPRESS AUTHORITY AND ARE NOT TO BE REPRODUCED, COPIED, OR OTHERWISE USED WITHOUT THE WRITTEN PERMISSION OF KELLY GROUP, INC. OF MO. TO THE USER OR THEIR AGENTS. KELLY GROUP, INC. OF MO. MAKES NO REPRESENTATION REGARDING DRAWING SCALE & ACCURACY.</p>	
ORDER NUMBER:	PK34198-10614		