

Gateway South Transmission Line Project

Wyoming ISC Permit Informational Meeting





Agenda

- Purpose of the Informational Meeting
- Webinar Functionality and Tutorial
- Team Introduction
- Project Presentation
- Question and Answer Session

Webinar Tutorial

- You have joined this webinar in listen-only mode
- The webinar will begin with a Project presentation followed by a question and answer session.
- During the presentation:
 - You can ask questions using the **Q&A** feature
- During the question and answer session:
 - Please use the **Raise Hand** feature to ask a question verbally (we will unmute your microphone) or the **Q&A** feature to type your question





Introductions

Rod Fisher

- Rocky Mountain Power
- Principle Project Manager

Nancy Smith

- Rocky Mountain Power
- Preconstruction Project Manager

Aleta Brown

- Rocky Mountain Power
- Local and State Permitting Project Manager

Mary Huisenga

- SWCA Environmental Consultants
- ISC Application Point of Contact

Ron Dutton

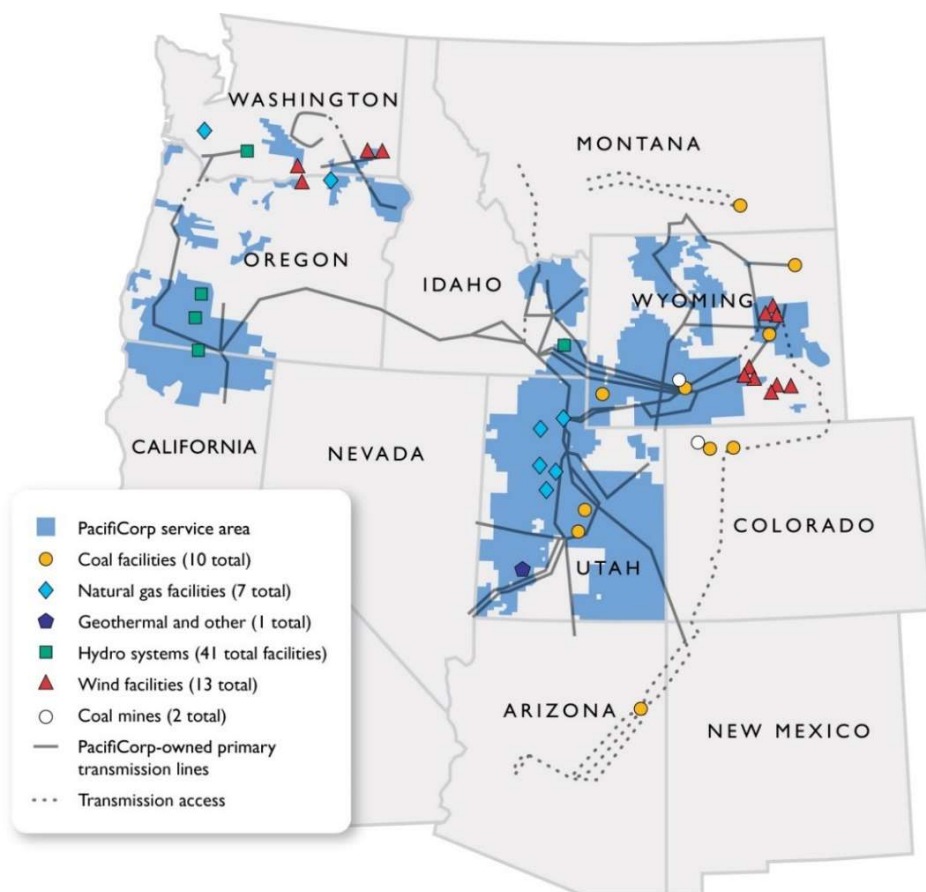
- Sammons/Dutton LLC
- Socioeconomic Analysis Lead

Gateway South Transmission Line Project

Wyoming ISC Permit Informational Meeting



PacifiCorp Overview



- Two divisions – Rocky Mountain Power and Pacific Power
- 5600 Employees
- 1.9 million electricity customers
- 141,000 square miles of service territory in six states
- 17,457 miles of transmission
- 10,887 MW owned generation capacity
- Generating capacity by fuel type
 - Coal 55%
 - Natural Gas 25%
 - Hydro 10%
 - Wind, geothermal and other 10%

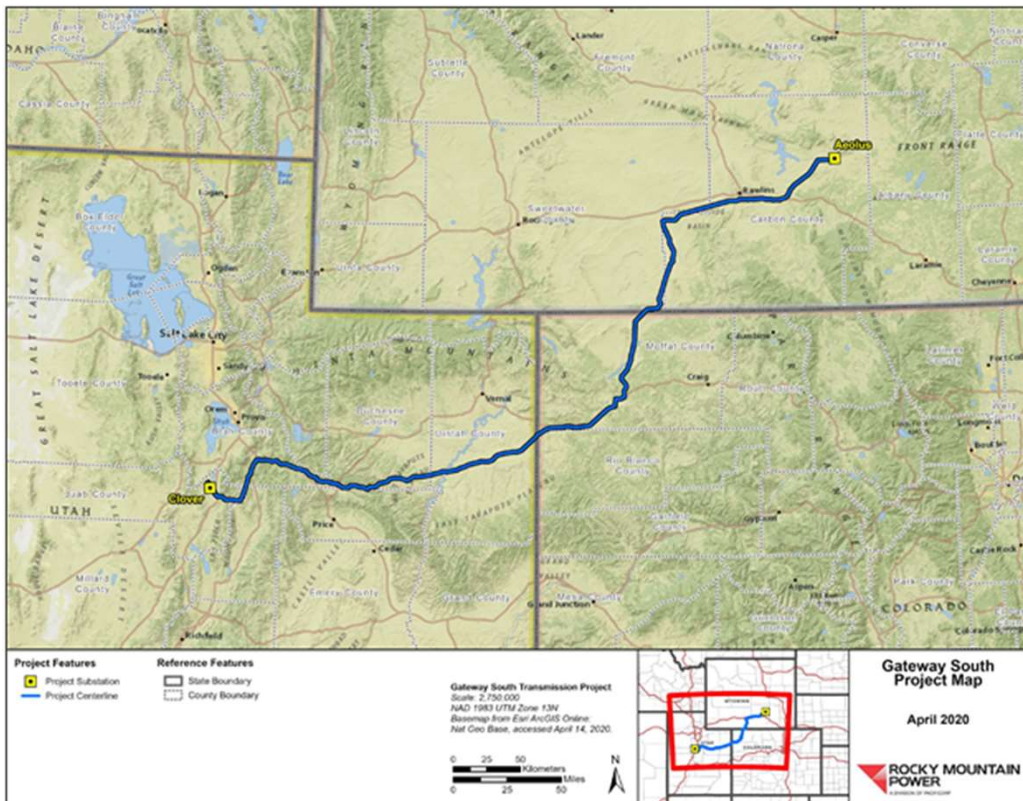
Wyoming Industrial Siting

Rocky Mountain Power is in the process of applying for a Section 109 Permit pursuant to the Wyoming Industrial Development Information and Siting Act.

The purpose of this permitting process is to ensure that the Gateway South Project:

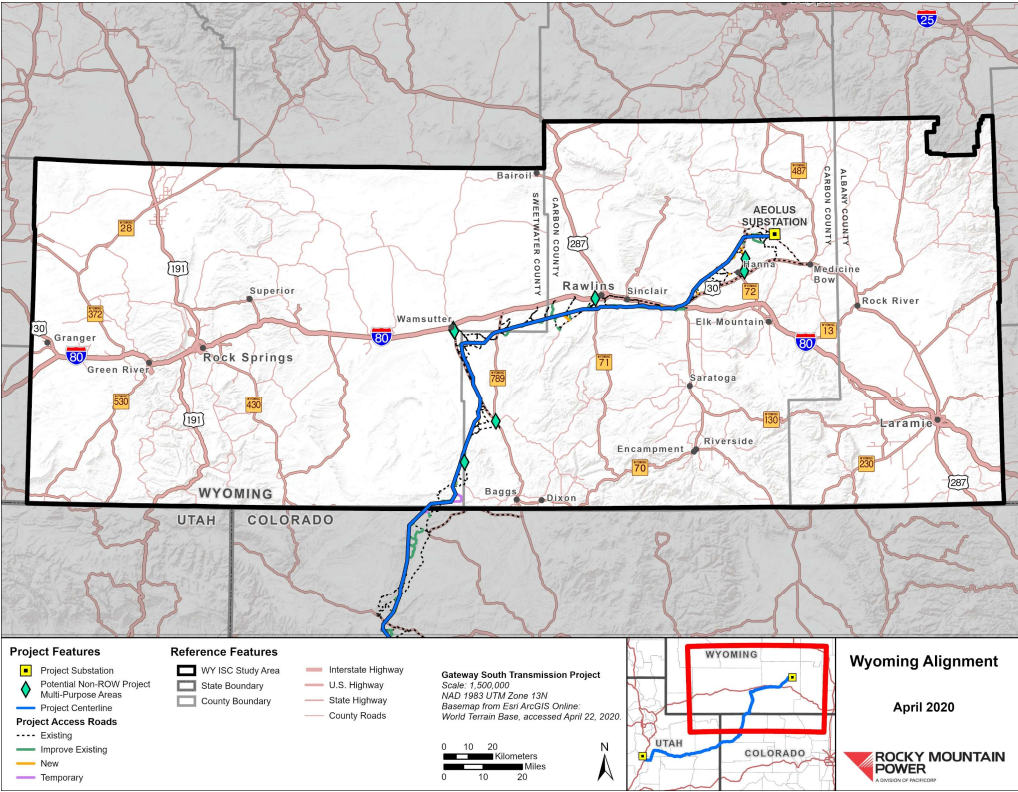
- complies with applicable laws;
- does not pose a threat of serious injury to the environment, the social and economic condition, or local inhabitants;
- will not substantially impair the health, safety, or welfare of local inhabitants; and
- is supported by ample financial resources to decommission and reclaim the Project.

Gateway South Project Description



- The Gateway South Project consists of an approximately 416-mile-long, 500-kilovolt (kV) extra-high-voltage alternating current transmission line.
- The Project originates at the existing Aeolus substation northwest of Medicine Bow, Wyoming, and terminates at the Clover substation near Mona, Utah.
- This Project is needed to:
 - meet growing energy demand;
 - relieve transmission congestion; and
 - improve the flow of electricity throughout the region.

Gateway South Project in Wyoming



Project Components

- Aeolus substation expansion (approximately 10 acres)
- Regeneration station east of Wamsutter
- 142 miles of new transmission line

Transmission Line Components by County

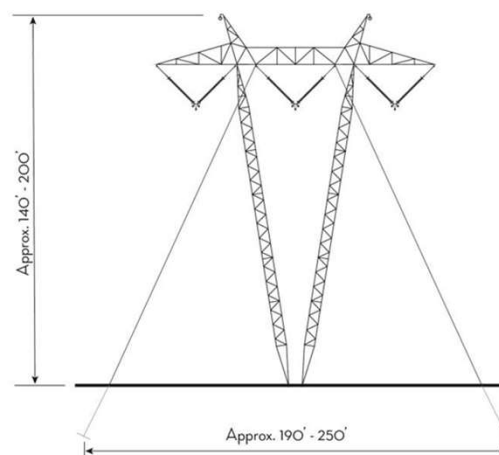
Location	Number of Structures	Transmission Line (miles)	New or Improved Access Roads (miles)
Carbon County	419	108	125
Sweetwater County	133	34	56
TOTAL	552	142	181

Transmission Line Components

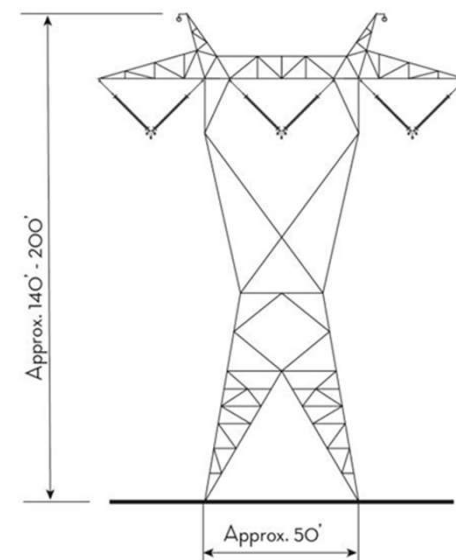
Transmission Line Structures and Associated Infrastructure

- **Span Length:** The distance between structures ranges from 1,000 to 1,800 feet (average of 1,500 feet).
- **Structure Height:** The single-circuit structures vary in height from 140 to 200 feet.
- **Right-of-Way:** The right-of-way is 250 feet wide and will be in a designated transmission line corridor.
- **Access Roads:** Access roads will typically be between 14 and 22 feet wide.

Single-circuit Guyed Lattice Steel Structure



Self-supporting Single-circuit Lattice Steel Structure



Aeolus Substation Expansion

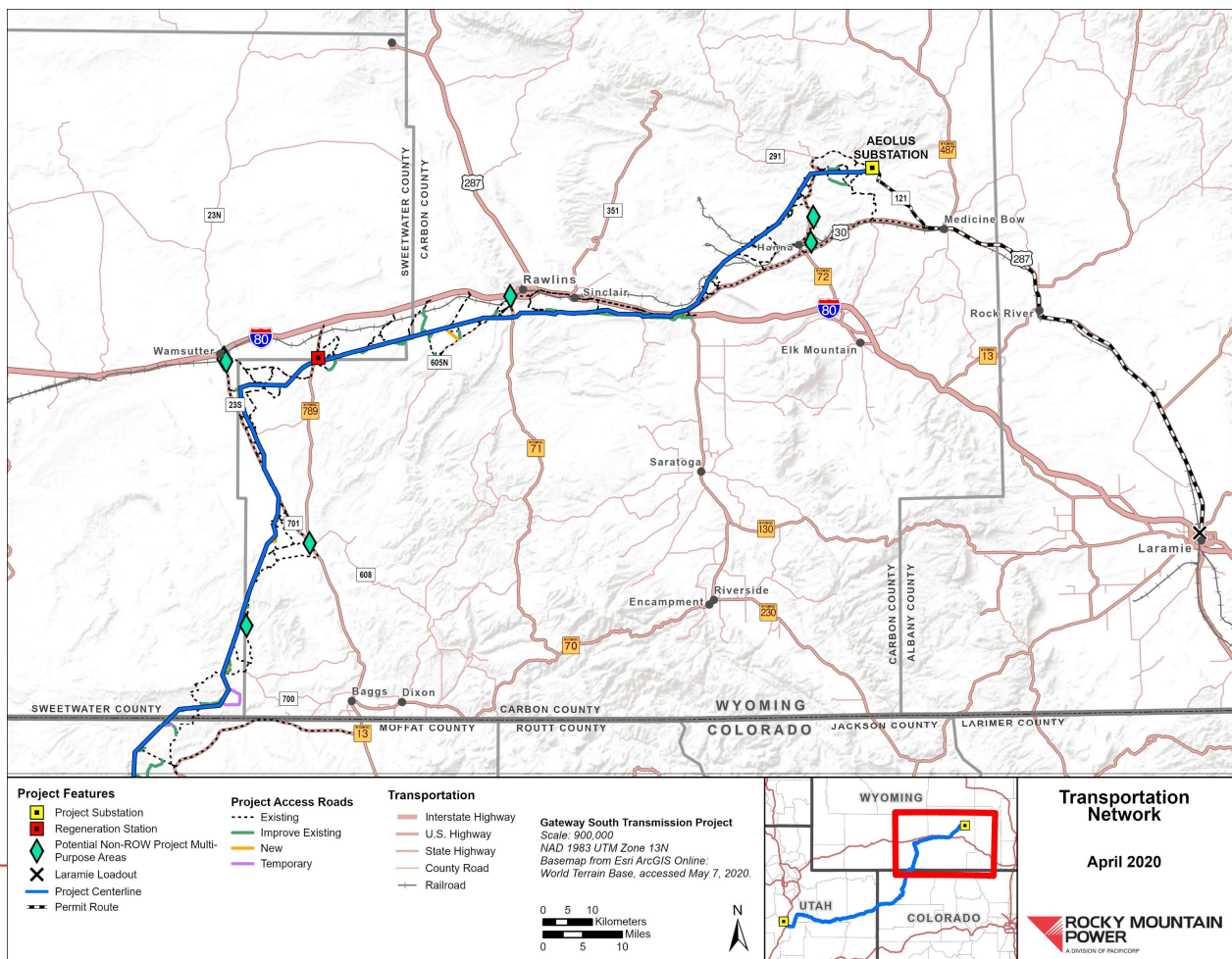
The Aeolus substation will be expanded (approximately 10 acres) to accommodate additional equipment, consisting of:

- A new line termination bay.
- Two new transformer banks to permit long-distance transmission.
- New 230-kV bays within the existing substation area.
- Additional foundations, structural steel, buswork, equipment, conduits, and cables in the 230-kV and 500-kV yards.



Aeolus Substation Overview

Transportation Routes in Wyoming



- Most materials needed for construction will be sourced from outside of Wyoming and transported to the Project via rail or truck.
- Materials transported by rail will be offloaded at the Rock River and Laramie rail loadout facilities.
- Materials transported by truck will primarily arrive on Interstate 80.
- From I-80 or the rail loadout facilities, materials will be transported by truck via US 30/287, WY 789 and WY 71.

Transportation Routes in Wyoming

Secondary Roads Utilized for the Project

Major Highways Utilized for the Project

- Interstate 80
- State Highway 789
- U.S. Highway 30/287

Rawlins to Wyoming/Colorado border

- State Highway 71
- Carbon County Road 451
- Carbon County Road 605 North (20 Mile Road)
- Carbon County Road 701 (Wamsutter Road)
- Sweetwater County Road 23S (Wamsutter-Crooks Gap Road)
- Sweetwater County Road 47 (Riner Road)
- Echo Springs Gas Plant Road
- Eight Mile Lake Road
- Standard Road
- Straten Road
- West Hangout Road
- Daley Road, south of I-80

Rawlins to Medicine Bow

- Carbon County Road 121
- Carbon County Road 215 North
- Carbon County Road 270
- Carbon County Road 291
- Carbon County Road 297
- Carbon County Road 316
- Carbon County Road 347 South
- Colorado Interstate Gas (CIG) Plant Road/Carbon County Road 407
- South Higley Boulevard, south of I-80

Medicine Bow to Laramie

- 3rd Street/Highway 30/287
- Carbon County Road 121



Environmental Overview

- The potential environmental impacts have been extensively studied to comply with the National Environmental Policy Act, culminating in a Final Environmental Impact Statement prepared by the BLM.¹
- Rocky Mountain Power has designed the Project to avoid and minimize impacts to environmental resources to the extent practicable and to comply with federal, state, and local environmental regulations.
- Most impacts to environmental resources will be short-term and minor in nature during construction activities.
- The Project will abide by seasonal wildlife restrictions during construction.

Environmental Resources Studies

Resources Evaluated for Project Impacts

- Climate and Air Quality
- Geologic Hazards
- Soil Resources
- Mineral Resources
- Water Resources
- Vegetation (including Special Status Plants)
- Wildlife (including Special Status Wildlife)
- Fish and Aquatic Resources
- Land Use
- Parks, Preservation, and Recreation
- Special Designations and Other Management Areas
- Lands with Wilderness Characteristics
- Visual Resources
- National Trails System
- Fire Ecology and Management
- Cultural and Paleontological Resources

Rocky Mountain Power has extensively studied environmental resources in the Project area and continues to collect data to avoid and minimize impacts to environmental resources during Project construction.

Environmental Resources Protection Plans

Rocky Mountain Power has prepared a **Project Plan of Development**, which contains resource protection plans that will be implemented during construction and operations.

Resource Protection Plan	Description
Biological Resources Conservation Plan	Assists federal land-management agencies and project personnel in meeting the obligations to protect biological resources during the planning, design, and implementation of the project.
Noxious Weed Management Plan	Provides methods to control potential establishment and/or spread of noxious weeds during and following construction.
Water Resources Protection Plan	Provides measures to protect hydrologic resources from potential impacts during construction, maintenance, and operation.
Vegetation Management Plan	Provides direction for foresters, contractors, and PacifiCorp employees for vegetation management. Covers vegetation management techniques for both distribution and transmission.
Erosion, Dust Control, and Air Quality Plan	Addresses regulatory compliance, environmental concerns, mitigation recommendations, and monitoring requirements necessary to ensure impacts associated with construction are minimized as they relate to soil conservation and air quality.
Fire Protection Plan	Details measures implemented to reduce the risk of starting a fire and suppress any fires that do occur.
Environmental and Safety Training Plan	Educates all personnel and visitors on how compliance with all project- specific permitting documents will be met.

Socioeconomic Overview

- The Project is a \$508 million energy transmission infrastructure investment in Wyoming.
- The Project will generate approximately \$97 million in total tax revenues over the 50-year economic life of the Project.
- Tax revenues from the Project will support local and state governments, including services like public education.
- The Project will create, on average, approximately 130 jobs over 29 months of construction activities.

Tax Revenues

Ad valorem:

\$82 million to local governments and the Wyoming School Foundation Program

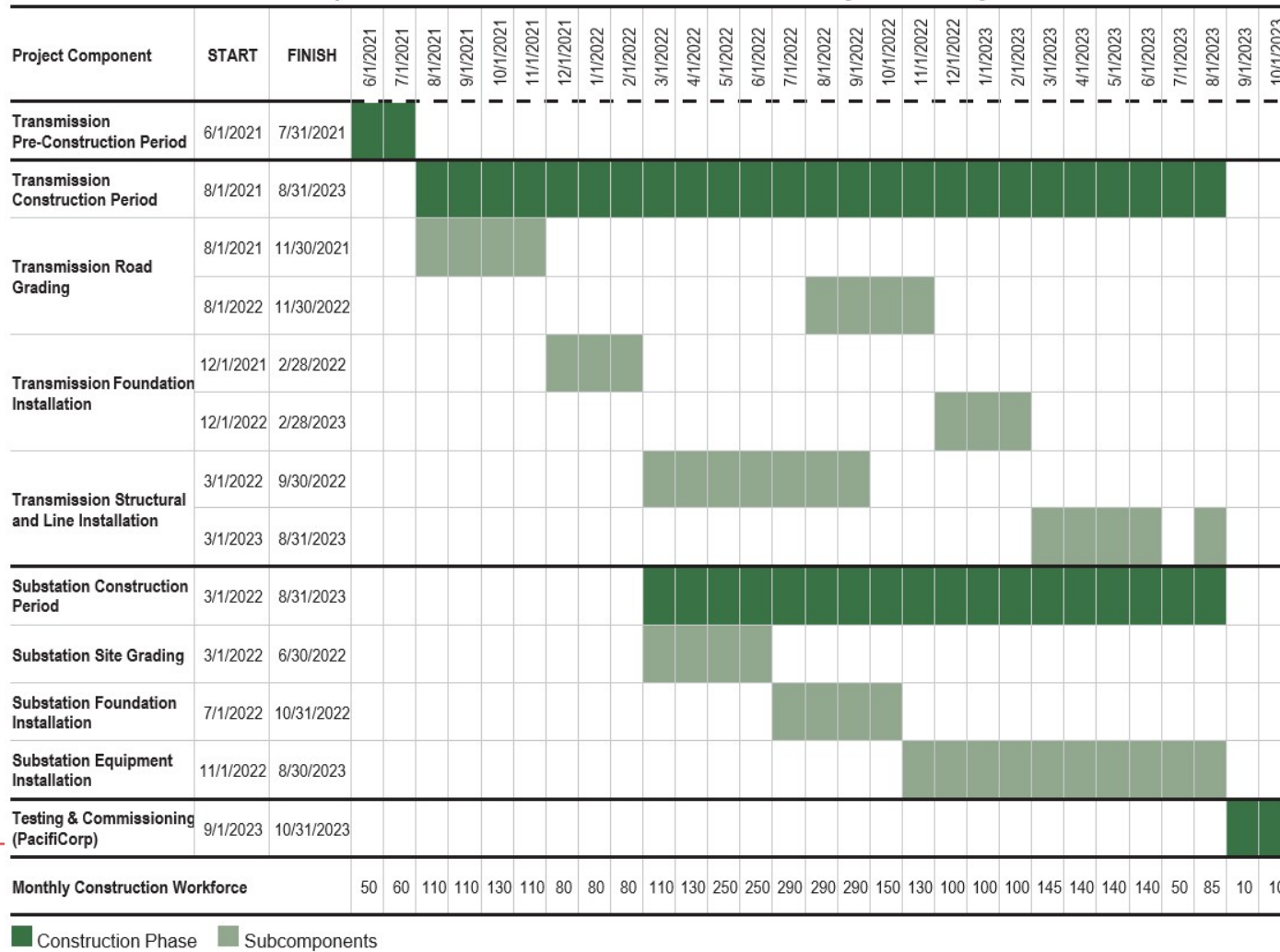
Sales, use and lodging:

\$8.98 million in state sales and use
\$4.56 million in local sales, use and lodging

Impact Assistance Funds

Up to \$6.2 million will be generated from the project for potential distribution by the Industrial Siting Council.

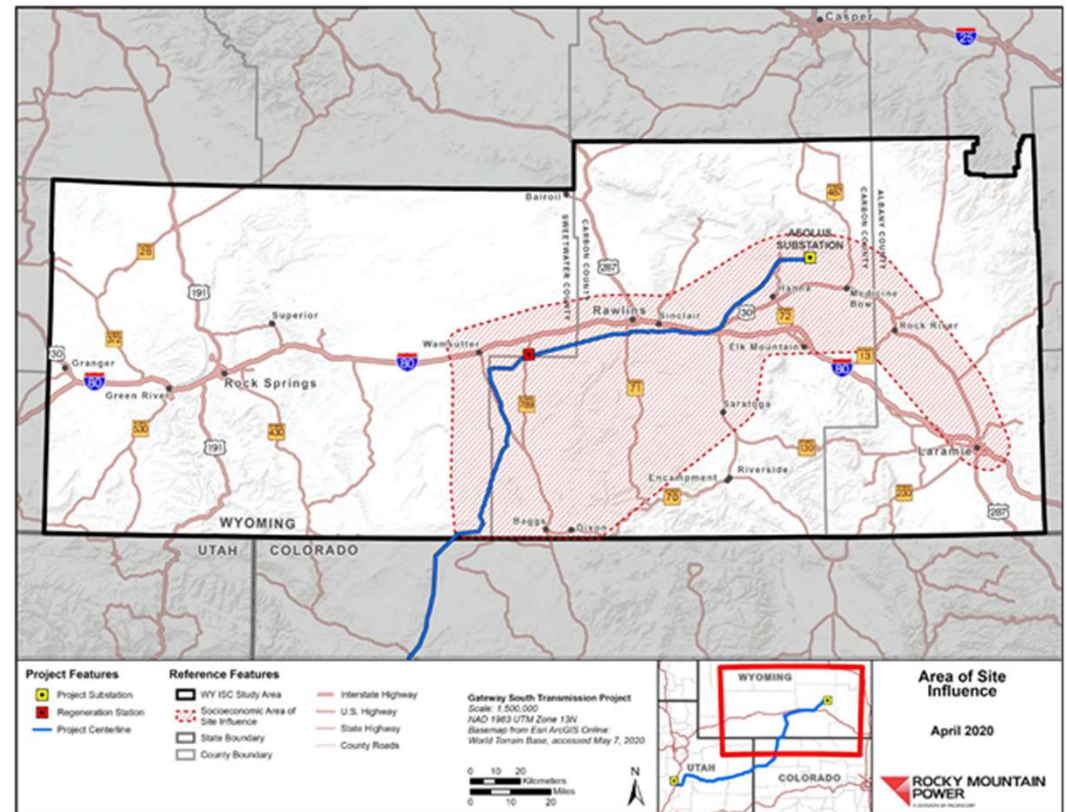
Anticipated Construction Schedule



POWERING YOUR GREATNESS

Study Area and Socioeconomic Area of Site Influence

- The Study Area includes Carbon County, Sweetwater County, and Albany County.
- The **Area of Site Influence** contains the following communities:
 - **Carbon County** and the municipalities of Rawlins, Hanna, Medicine Bow, Elk Mountain, Saratoga, Sinclair, Baggs, and Dixon
 - **Sweetwater County** and the municipality of Wamsutter
 - **Albany County** and the municipalities of Rock River and Laramie



Jobs in Wyoming during Construction and Operations

Transmission Line Construction

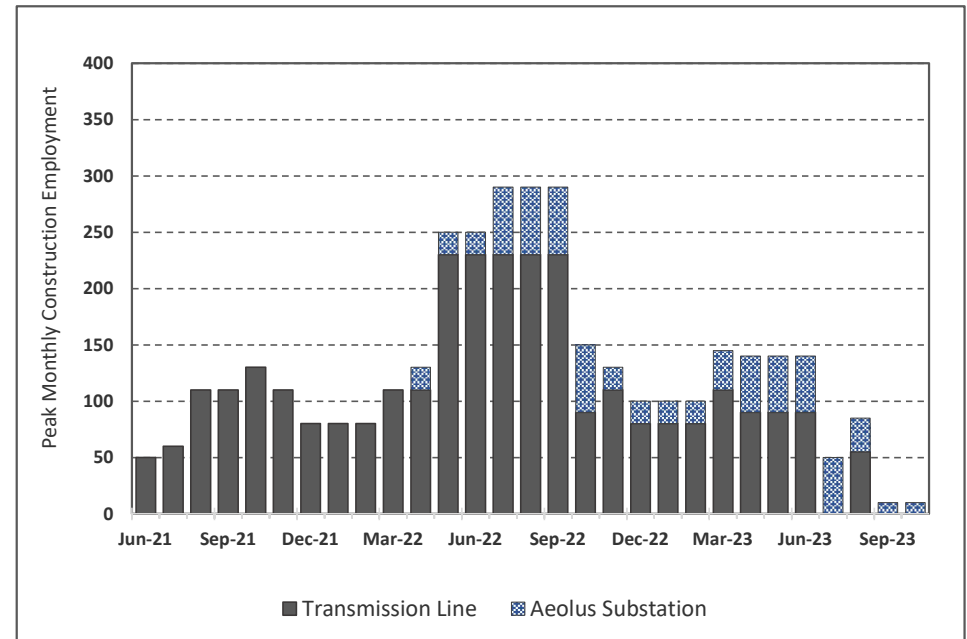
- Workforce will range from 50 to 230 individuals
- Average about 118 workers during the 26 months of active construction
- Peak monthly workforce of 230 workers

Aeolus Substation Expansion

- Workforce will range from 10 to 60 individuals
- Average approximately 35 workers during the 19-month construction period
- Peak quarterly workforce of approximately 60 workers

Operations

- No additional long-term jobs will be created by the Project



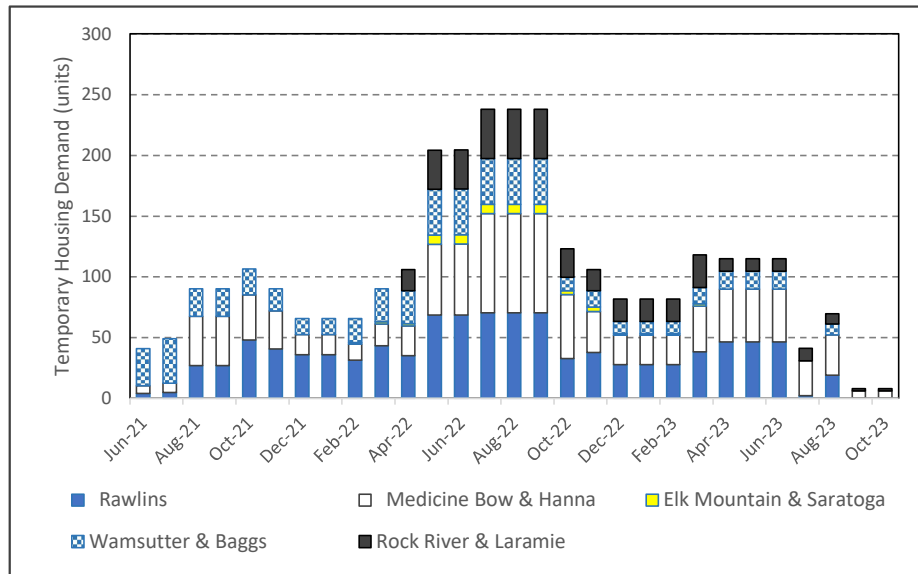
Peak Monthly Construction Employment for the Gateway South Project

Temporary Construction Worker Housing

Housing needs for non-local workers who relocate temporarily to work on the Gateway South Project will average 105 units over the 29-month construction schedule, with a short-term peak of 237 units during the summer of 2022.

Average Housing Needs Per Year

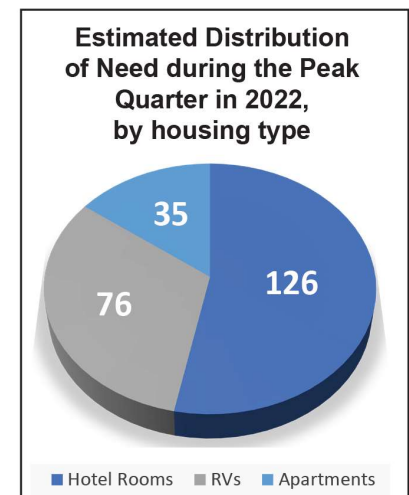
2021 Average = 76
2022 Average = 147
2023 Average = 75



Monthly Temporary Housing Needs

The estimated distribution of housing needs, by selected community groupings, over the entire construction schedule is:

- Rawlins (36%)
- Medicine Bow & Hanna (33%)
- Wamsutter & Baggs (16%)
- Rock River & Laramie (13%)
- Elk Mountain & Saratoga (2%)





Questions

Project website: <http://www.pacificorp.com/gatewaysouth>

Comments and Questions

Thank you for attending the Webinar
Please click Continue to Participate in a short Survey.

you will be leaving zoom.us to access the external URL below
https://forms.office.com/Pages/ResponsePage.aspx?id=9rCYT_sm0EGp-Jso45xj3keQp5iqInBIITAOdhjgvnxUNFhYS0JBTIVNRjJJSFI3MVRREFDNUxJSS4u

Are you sure you want to continue?

Continue

Stay on zoom.us



Questions

03:00

Name