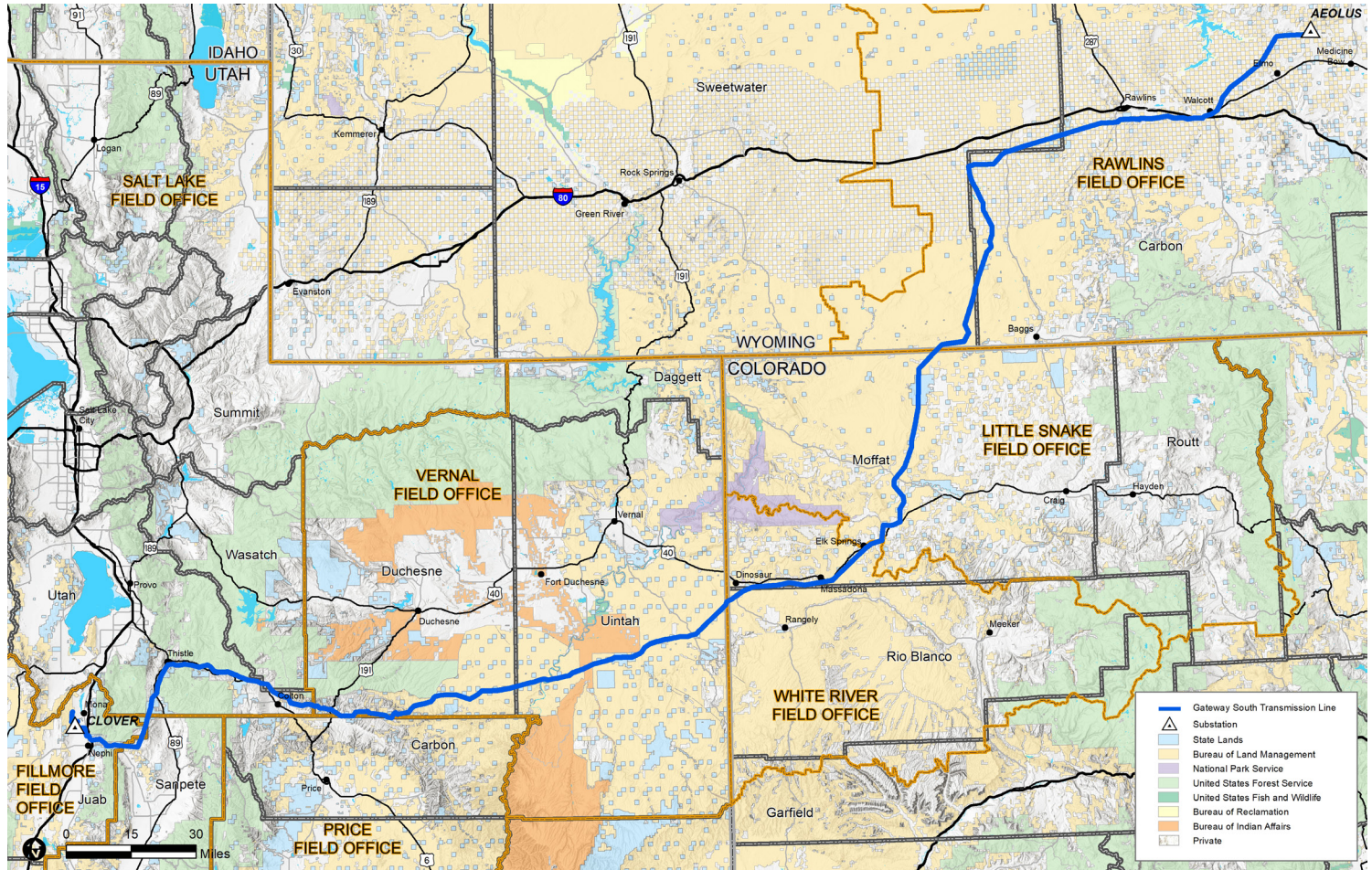


Gateway South Transmission Line

Segments 1–4 (Overall Project)



Number of Miles & Structures:

- 416 miles
- 1,637 structures

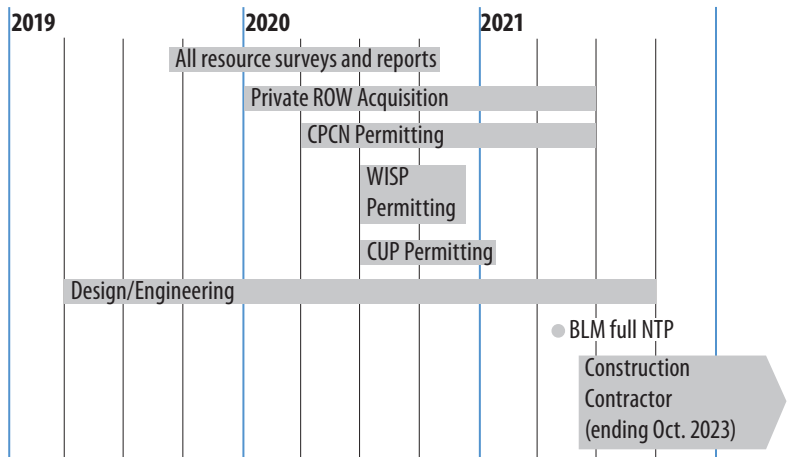
Federal Right-of-Way Granted:

- January 2017 (BLM)
- May 2017 (USFS)

Project Description:

The Gateway South Project will meet load growth, provide increased reliability, and improve operational flexibility in conjunction with future generation resources, including renewable energy. The project will consist of a 416 mile, single-circuit 500-kilovolt (kV), overhead, alternating-current transmission line. The transmission line will begin near Medicine Bow, Carbon County, Wyoming, at the Aeolus Substation and extend south and west to the Clover Substation near Mona, Juab County, Utah. The project will also include two series compensation stations, approximately 40 acres in size each, at two separate points along the project alignment.

Schedule:

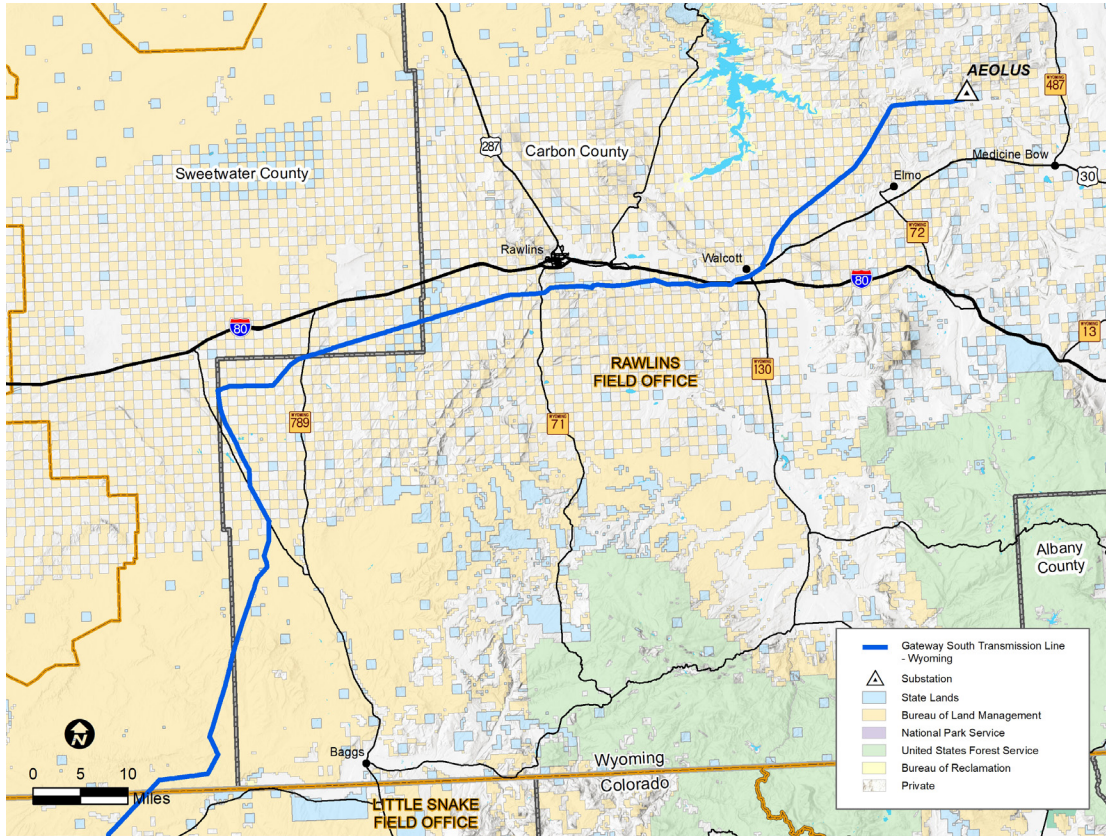


Project Websites:

- <https://eplanning.blm.gov/epl-front-office/eplanning/planAndProjectSite.do?methodName=renderDefaultPlanOrProjectSite&projectId=53044>
- <https://pacifiCorp.com/transmission/transmission-projects/energy-gateway/gateway-south.html>

Gateway South Transmission Line

Segment I (Wyoming)



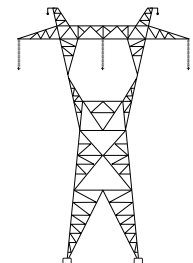
Federal Right-of-Way Granted:

- January 2017 (BLM)

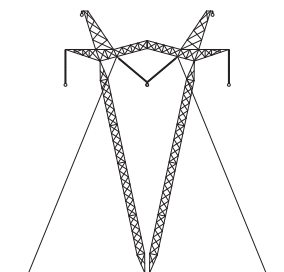
Project Components:

- New 500kV bay/equipment at existing Aeolus Substation
- 546 structures
- 159 miles of new access routes
- 141.5 miles of ROW
- 81.6 miles on BLM land
- 59.9 miles private land (includes State land)

Typical 500 kV Structure Diagrams:



Self-supporting Lattice



Guyed V

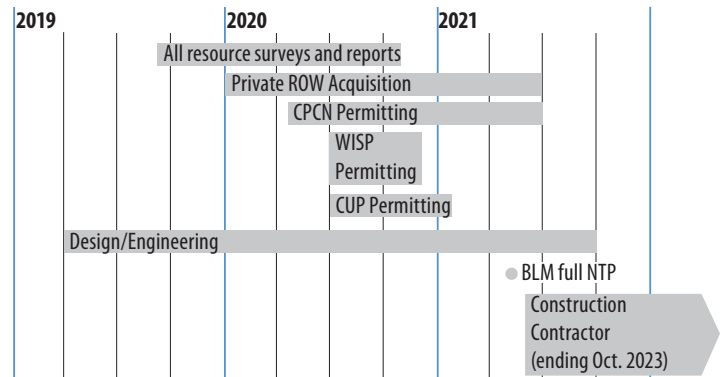
Project Management:

BLM Project Manager	Sharon Knowlton, (307) 775-6124, sknowlto@blm.gov
Owner	PacifiCorp/Rocky Mountain Power
• Pre-construction Project Manager	Nancy V. Smith, (719) 237-8520, Nancy.Smith2@pacifiCorp.com
• Principal Project Manager - Gateway Transmission	Rod Fisher, (801) 220-4561, Rod.Fisher@rockymountainpower.net

Vendors and Responsibilities:

Power Engineers	Owner's engineer for design, engineering and NWP 12 with WLC, Wilding, and Coffey for land survey
Paragon Partners	Right-of-way acquisition
SWCA	Biology, sensitive plants, plan of development, and notices to proceed (NTPs)
Western Archaeological Services	Cultural
EPG	Paleontology
Transcon	Pre-construction compliance contractor
TBD	Compliance inspection contractor

Schedule:

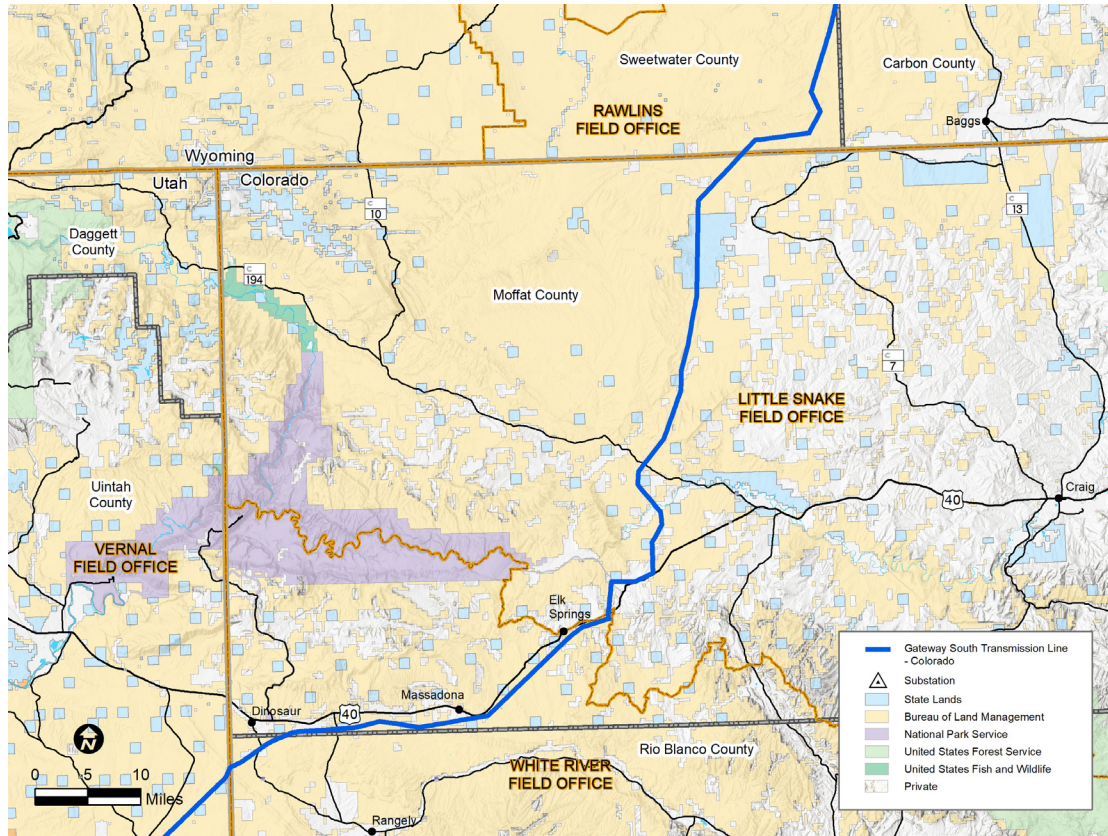


Project Websites:

- <https://eplanning.blm.gov/epl-front-office/eplanning/planAndProjectSite.do?methodName=renderDefaultPlanOrProjectSite&projectId=53044>
- <https://pacifiCorp.com/transmission/transmission-projects/energy-gateway/gateway-south.html>

Gateway South Transmission Line

Segment 2 (Colorado)



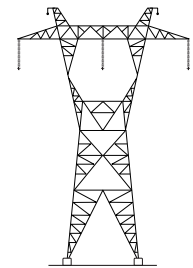
Federal Right-of-Way Granted:

- January 2017 (BLM)

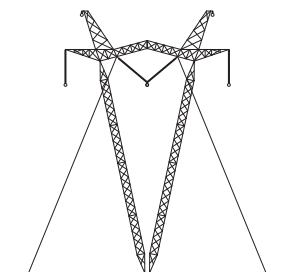
Project Components:

- 354 new structures
- 85 miles of new access routes
- 91.5 miles of ROW
- 66.2 miles on BLM land
- 25.3 miles private land (includes State land)
- 1 series compensation station

Typical 500 kV Structure Diagrams:



Self-supporting Lattice



Guyed V

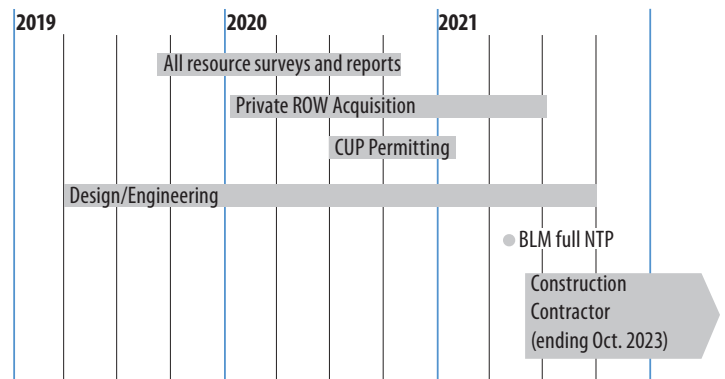
Project Management:

BLM Project Manager	Sharon Knowlton, (307) 775-6124, sknowlto@blm.gov
Owner	PacificCorp/Rocky Mountain Power
• Pre-construction Project Manager	Nancy V. Smith, (719) 237-8520, Nancy.Smith2@pacificcorp.com
• Principal Project Manager - Gateway Transmission	Rod Fisher, (801) 220-4561, Rod.Fisher@rockymountainpower.net

Vendors and Responsibilities:

Power Engineers	Owner's engineer for design, engineering and NWP 12 with WLC, Wilding, and Coffey for land survey
Paragon Partners	Right-of-way acquisition
SWCA	Biology, sensitive plants, plan of development, and notices to proceed (NTPs)
Western Archaeological Services	Cultural
EPG	Paleontology
Transcon	Pre-construction compliance contractor
TBD	Compliance inspection contractor

Schedule:

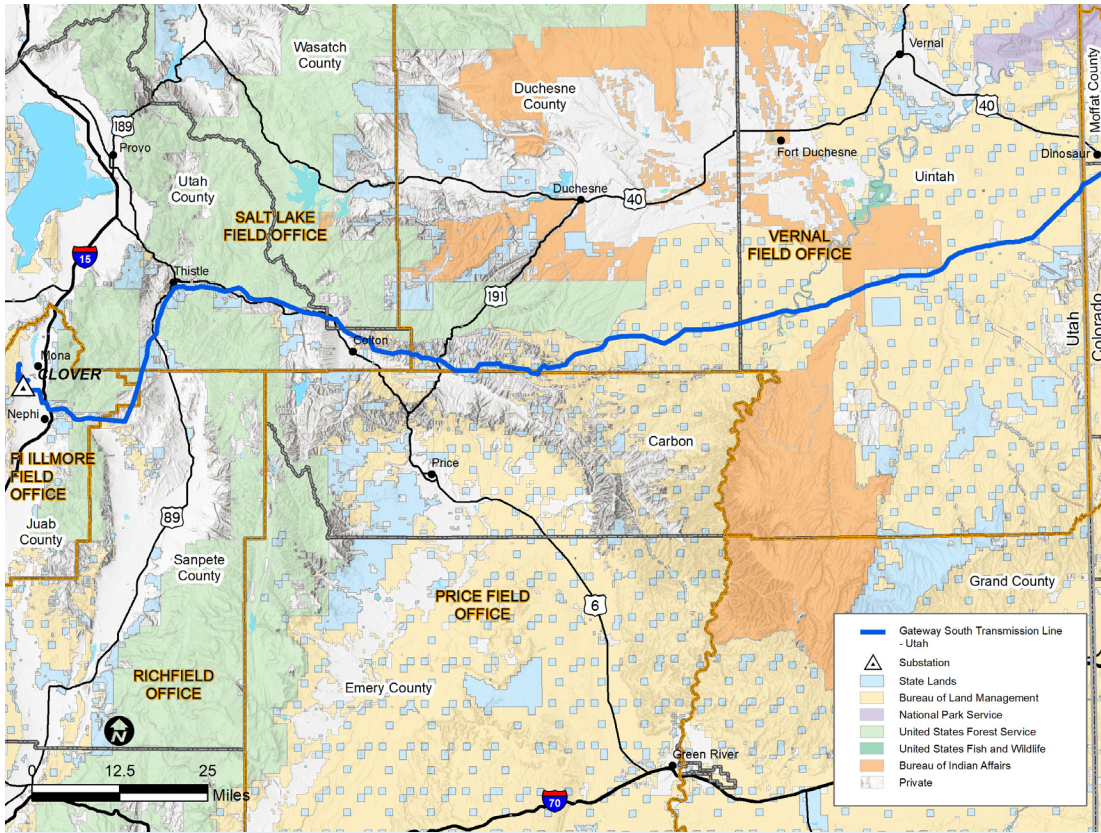


Project Websites:

- <https://eplanning.blm.gov/epl-front-office/eplanning/planAndProjectSite.do?methodName=renderDefaultPlanOrProjectSite&projectId=53044>
- <https://pacificcorp.com/transmission/transmission-projects/energy-gateway/gateway-south.html>

Gateway South Transmission Line

Segments 3 and 4 (Utah)



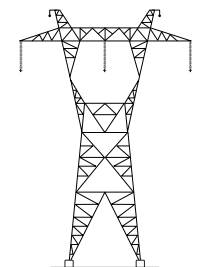
Federal Right-of-Way Granted:

- January 2017 (BLM)
- May 2017 (USFS)

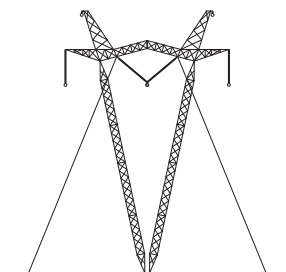
Project Components:

- 737 structures
- 192 miles of new access routes
- 182.6 miles of ROW
- 85.3 miles on BLM and USFS land
- 97.3 miles private land (includes State land)
- 1 series compensation station – Coyote
- New 500kV bay/equipment at existing Clover Substation

Typical 500 kV Structure Diagrams:



Self-supporting Lattice



Guyed V

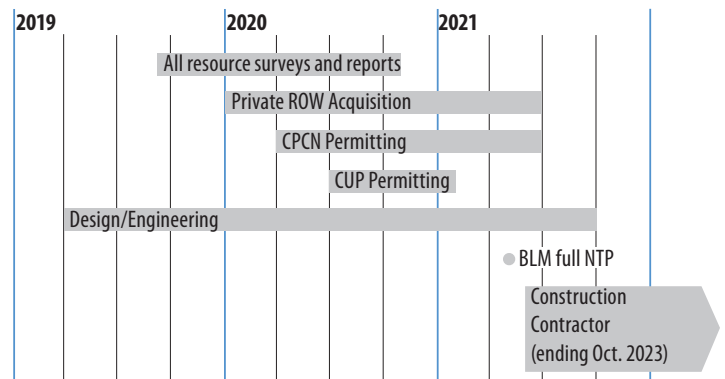
Project Management:

BLM Project Manager	Sharon Knowlton, (307) 775-6124, sknowlto@blm.gov
Owner	PacifiCorp/Rocky Mountain Power
• Pre-construction Project Manager	Nancy V. Smith, (719) 237-8520, Nancy.Smith2@pacifiCorp.com
• Principal Project Manager - Gateway Transmission	Rod Fisher, (801) 220-4561, Rod.Fisher@rockymountainpower.net

Vendors and Responsibilities:

Power Engineers	Owner's engineer for design, engineering and NWP 12 with WLC, Wilding, and Coffey for land survey
Paragon Partners	Right-of-way acquisition
SWCA	Cultural, biology, sensitive plants, plan of development, and notices to proceed (NTPs)
EPG	Paleontology
Transcon	Pre-construction compliance contractor
TBD	Compliance inspection contractor

Schedule:



Project Websites:

- <https://eplanning.blm.gov/epl-front-office/eplanning/planAndProjectSite.do?methodName=renderDefaultPlanOrProjectSite&projectId=53044>
- <https://pacifiCorp.com/transmission/transmission-projects/energy-gateway/gateway-south.html>