



Naples

substation and transmission upgrade

Rocky Mountain Power is always working to provide safe, reliable and efficient energy service to our customers. As part of this commitment, we're planning a new substation and transmission upgrade project to improve electric service reliability and meet power requirements for this growing area.

Project purpose and need

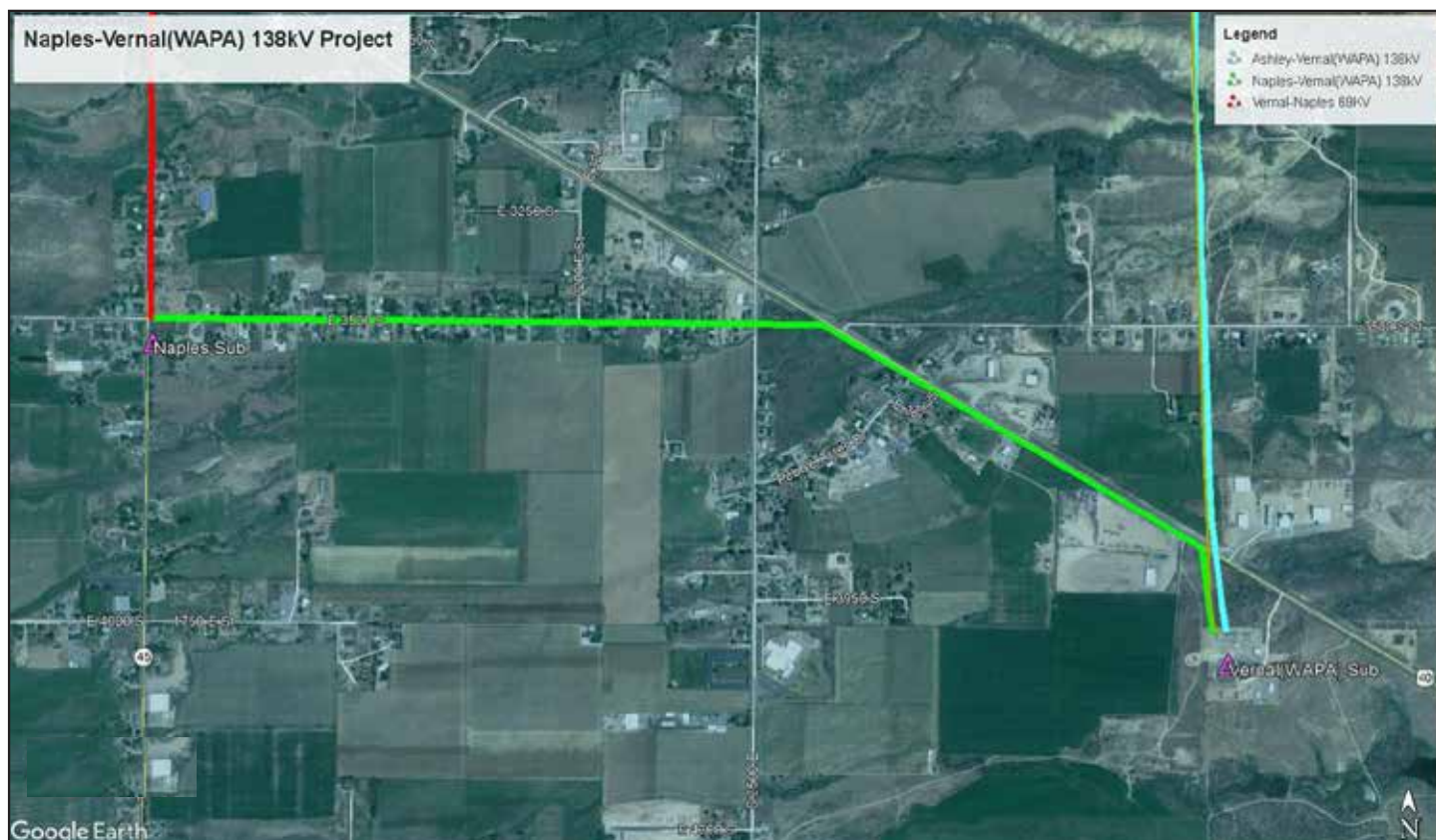
The Uintah Basin area is growing and so is the customer need for electricity.

This project will improve service for existing customers and provide for the growing demand for electricity in this area. The upgrade will increase the electrical system's capacity to deliver energy to the Uintah Basin area.

These investments are critical to provide sufficient energy supplies for customers today and in the future, by improving system reliability and operational flexibility.

About the project

Rocky Mountain Power plans to build a new substation on a property the company purchased for this purpose in 1986, located at 3500 South and State Highway 45. The



transmission line will follow an existing distribution line on the south side of 3500 South east to State Hwy 40 then follow Hwy 40 to the WAPA substation near Hwy 40 and 3100 E connecting to the Western Area Power Administration Substation. This new line and substation will increase local electric capability and provide for alternate paths for continued service during maintenance and severe weather.

Project description and phasing

To meet the growing needs of customers, this project must be in service to customers by December 2019.

The upgraded transmission line and substation will have direct benefits to local customers and the larger Naples/Vernal area.

The project has been anticipated by long-range planning for the Uintah Basin area for quite some time.

This is part of a master plan for the greater Vernal area to increase reliability and capacity to meet the increasing demands of our customers. Additional projects will be implemented as this area continues to grow.

Notice will be provided if a planned electrical power service interruption occurs as part of this work.

Contact information

Have a question or comment about this project?

Call us at **801-220-4221** or send us an email at

constructionprojects@pacificorp.com.

You can find more information online at our website:

rockymountainpower.net/transmission.

PROJECT SCHEDULE

- **April/May 2019**
Construction begins
- **December 2019**
In-service date