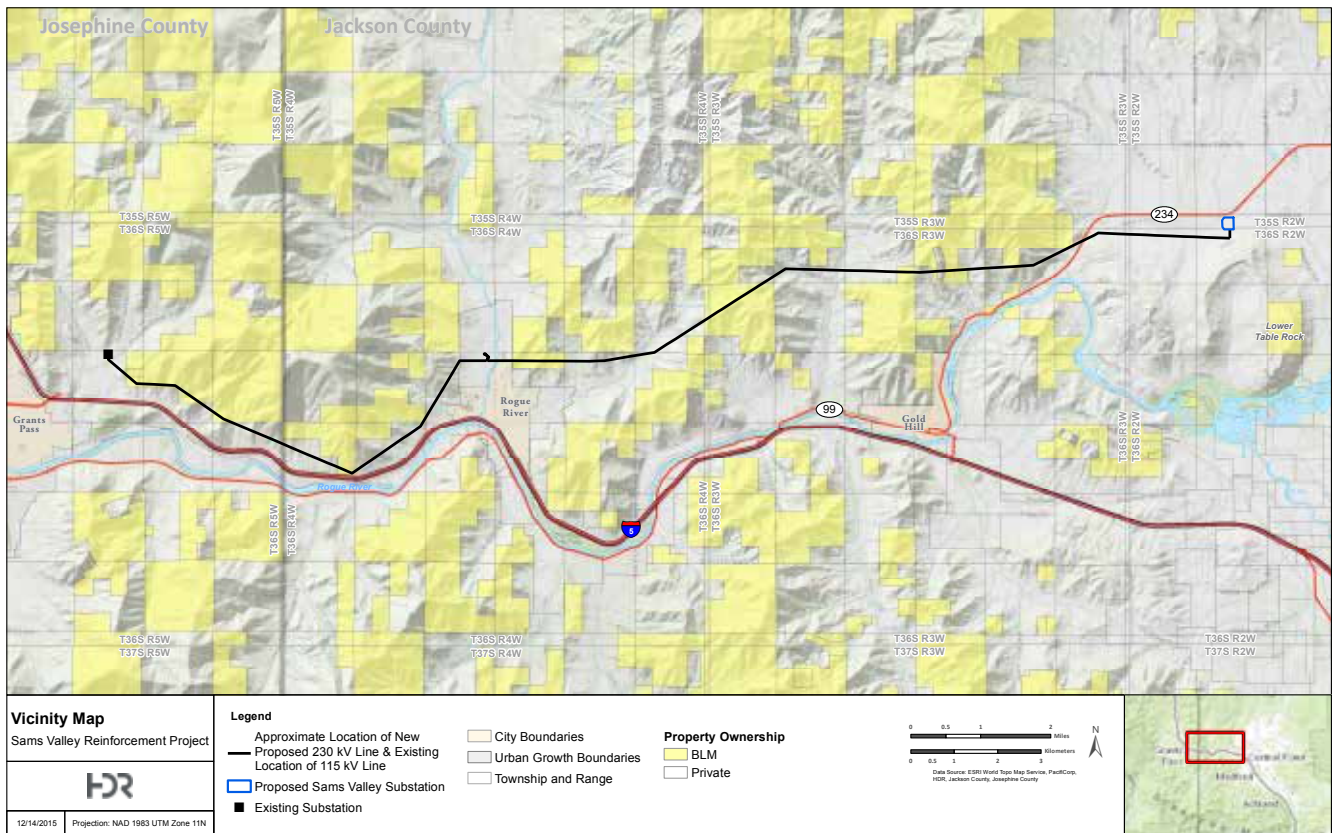


# Grants Pass – Table Rock 230-kV Transmission Line and Substation Project



## What are we doing?

Pacific Power plans to build 18 miles of high capacity (230-kilovolt) transmission line from our existing Grants Pass substation in Josephine County to a new Sams Valley substation in Jackson County. As much as possible, the 18 miles of transmission line will be built within existing property easements to minimize impacts to the community and remove the need to build entirely new lines in new easements. At this time, the existing 100-foot wide easements will accommodate the new line.

## Why we are building?

The new transmission line and substation are necessary to improve system reliability and keep up with population growth and increased energy usage since the 1990s when the lines were built. During certain unlikely events, under our current system configuration, it is possible that Pacific Power would be unable to serve large numbers of customers in Jackson, Josephine and Del Norte counties. Pacific Power views the potential loss of service to tens of thousands of

customers, however unlikely, as a serious issue that needs to be addressed to ensure our customers can depend upon their electrical service. Further, the company has a statutory obligation to ensure that facilities are in place to prevent such an occurrence. Through the construction of the project, Pacific Power is conforming to reliability standards established by the Western Electricity Coordinating Council (WECC) and North American Electric Reliability Corporation (NERC) under the authority of Federal Energy Regulatory Commission (FERC).

### Where are we building?

The substation, which is necessary to support the new transmission line, is planned for three parcels owned by Pacific Power located near the intersection of Tresham Lane and Oregon State Highway 234. This substation site is located at the intersection of existing transmission lines necessary for the construction. This greatly reduces impacts as it will avoid requiring entirely new transmission lines, with new easements, across properties currently unaffected. Pacific Power is planning to site the new 230-kV transmission line from the Grants Pass substation on the same right of way now being used for an existing 115-kV transmission line.

### What is the approval process?

The project will undergo a rigorous approval process from the federal, state and local authorities to ensure that the best possible location has been selected and represents the least impact to the greater community. Specifically, the Bureau of Land Management, Army Corps of Engineers, Oregon Department of State Lands, Oregon Department of Environmental Quality, and Josephine and Jackson County all will review a portion or the entire project for an approval.

### What is the timeline?

The project is currently in the permitting phase which is anticipated to last until mid-July 2017. When that process is complete, design and adjusting easements along a one mile section near the City of Rogue River will begin and extend through the end of 2017. Construction of the substation should begin in 2018 with the work completed and the line placed into service in late 2019.

### Opportunity for public comment

The Bureau of Land Management is required to undergo a National Environmental Policy Act process, which enables public comments through an environmental assessment published in the Federal Register. The Army Corps of

Engineers and Oregon Division of State Lands permits include a public comment period opportunity. In addition, the Jackson County, process will notify all property owners within 750 feet of the proposed action once a land use application is ready for public comment. These independent agencies oversee the public participation process, and should be contacted directly to participate in their decision processes.

More information is available on our website at [pacificpower.net/samsvalley](http://pacificpower.net/samsvalley) or via email at [ConstructionProjects@pacificcorp.com](mailto:ConstructionProjects@pacificcorp.com).

